



# Different Information Needs for Different Markets: URBAN and RURAL

Ali Mortazavi  
March 4, 2008

# Traveler Information/Advance Traveler Information System

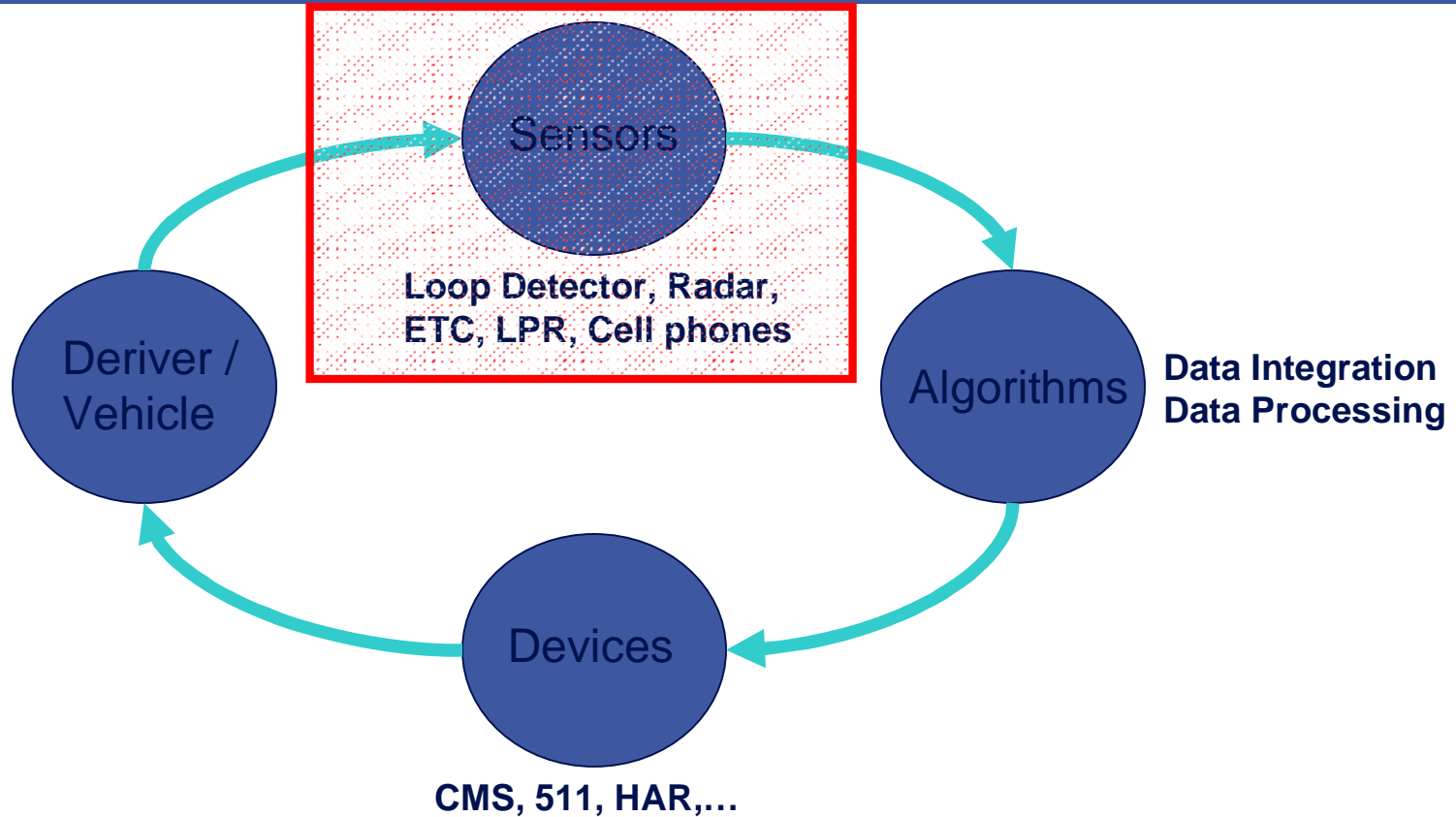
2

- Empower the public with the information
- Static information
- Real-time information
  - ⌘ Travel time a valuable source



# Advanced Traveler Information System

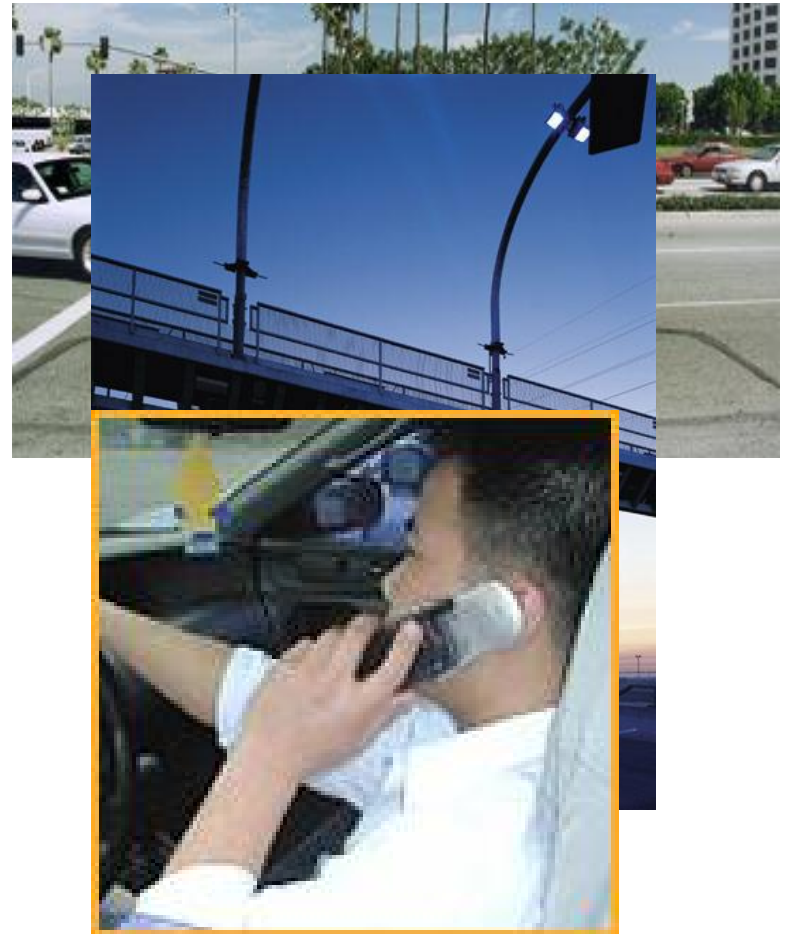
3



# Detection Technologies

4

- Point Detection
- Segment Detection
- Floating Point/Cell Detection



# Point Detection

5

• Inductive Loop (ILD)



• Doppler Radar



• Video



• Doppler Microwave



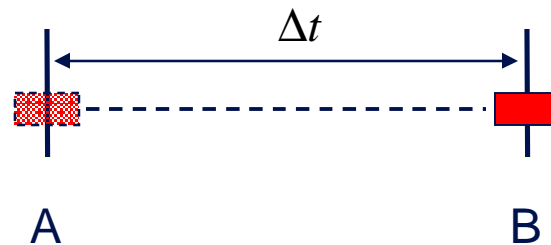
• Passive Acoustic

# Segment Reading

6

## Toll Tag Readers/License Plate Readers

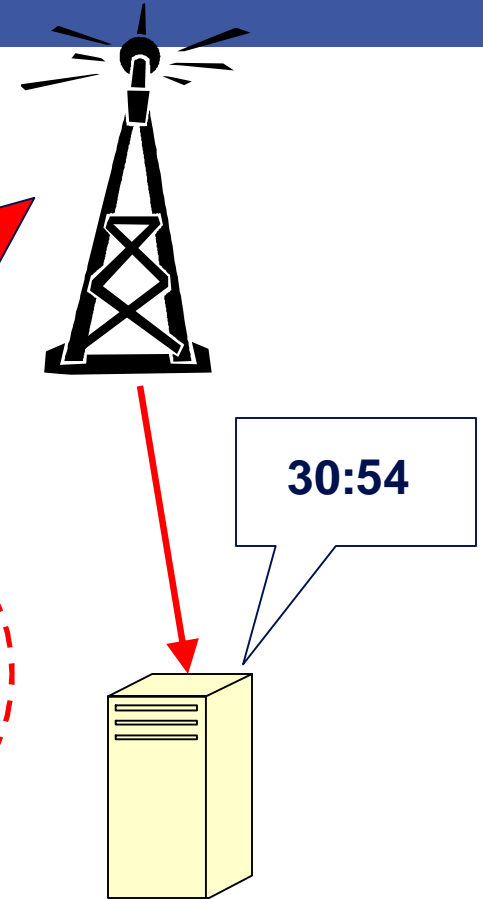
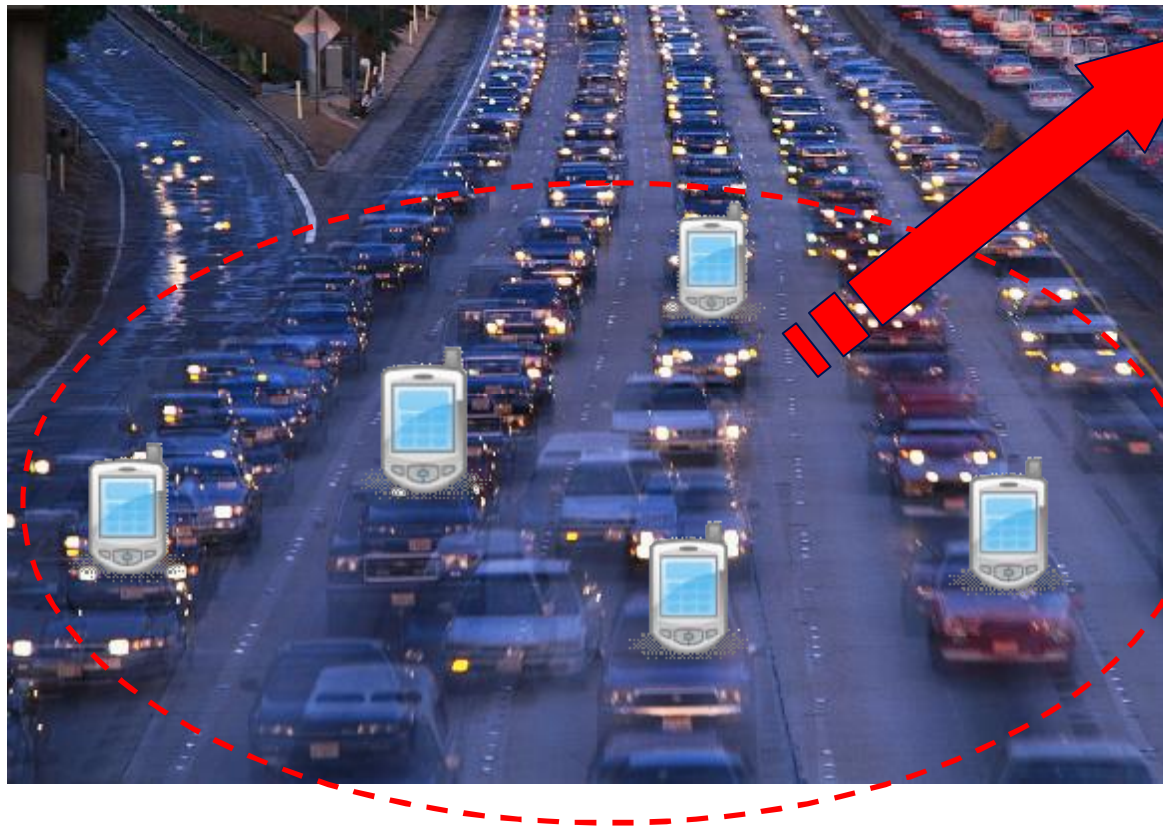
- Lag time on traffic data



# Floating Point

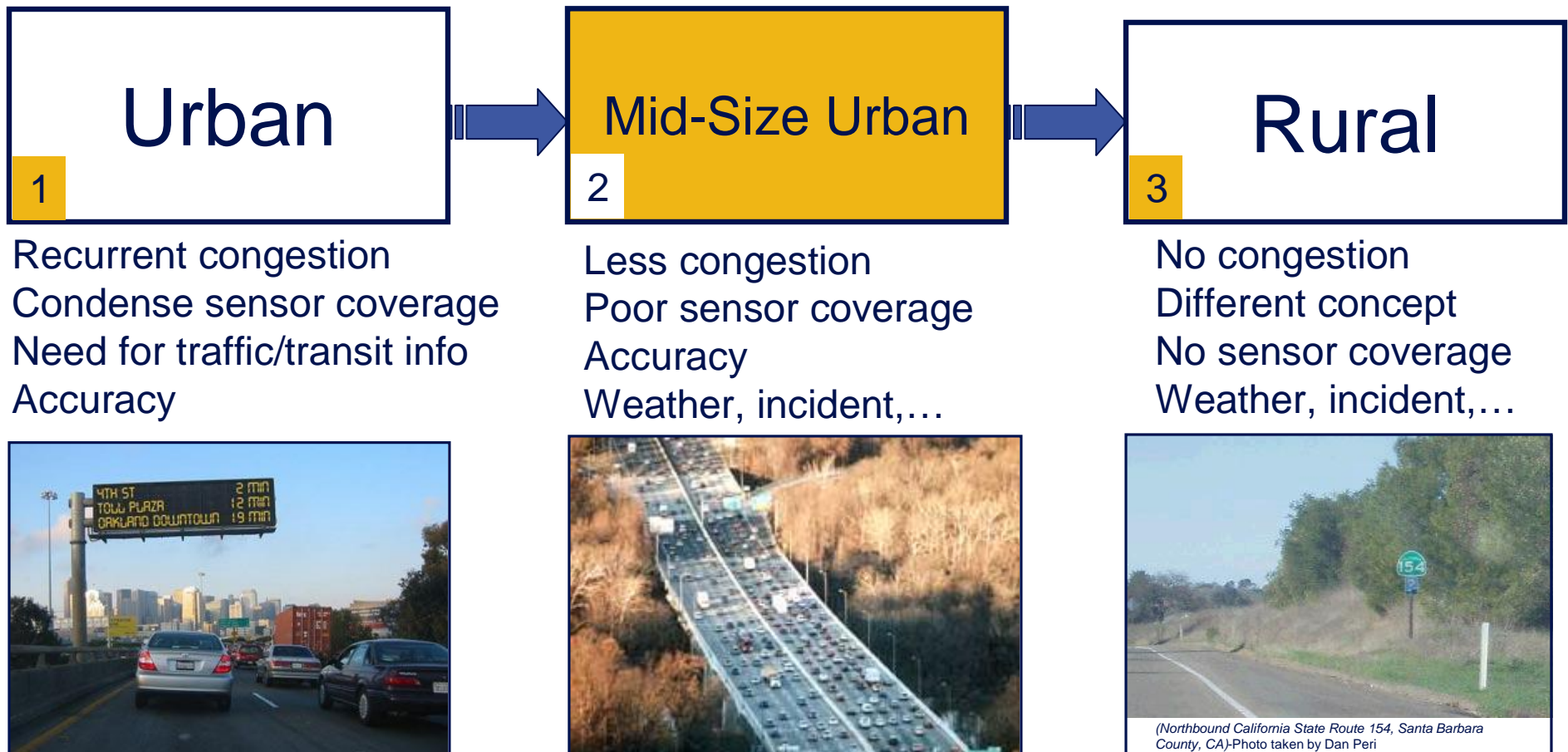
7

## Location Based Technologies



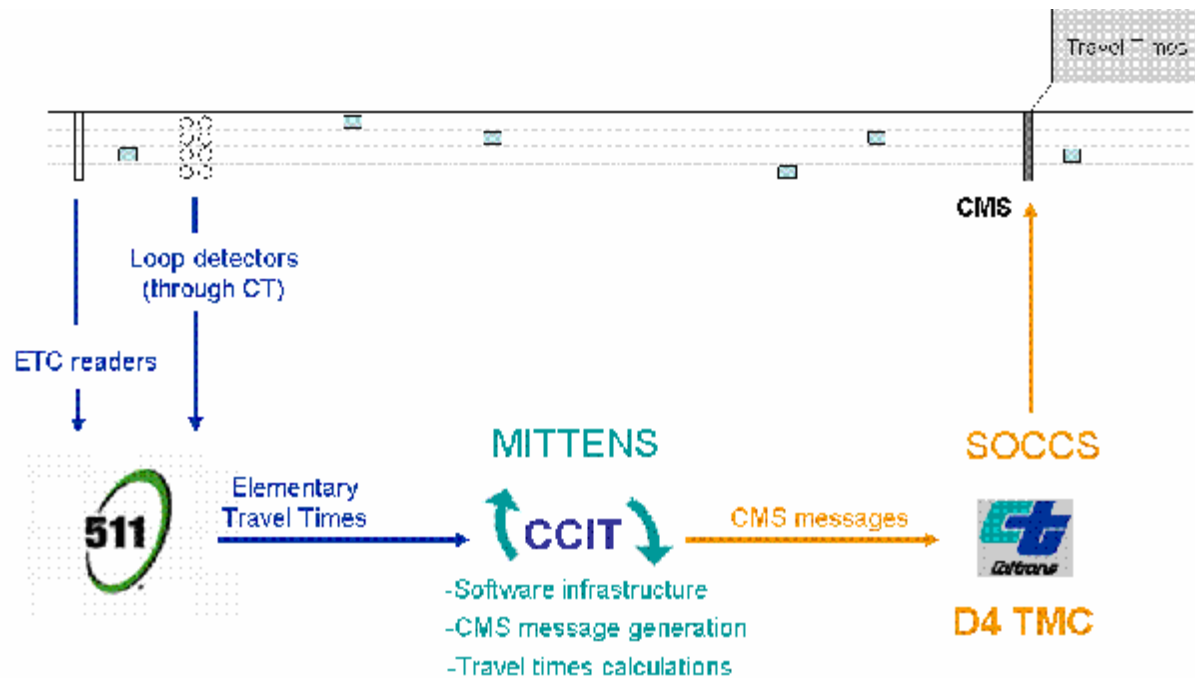
# Urban and Rural

8



# 1-Travel Time on CMS-The Bay Area

9



Schematic of Travel Time Display System in District 4

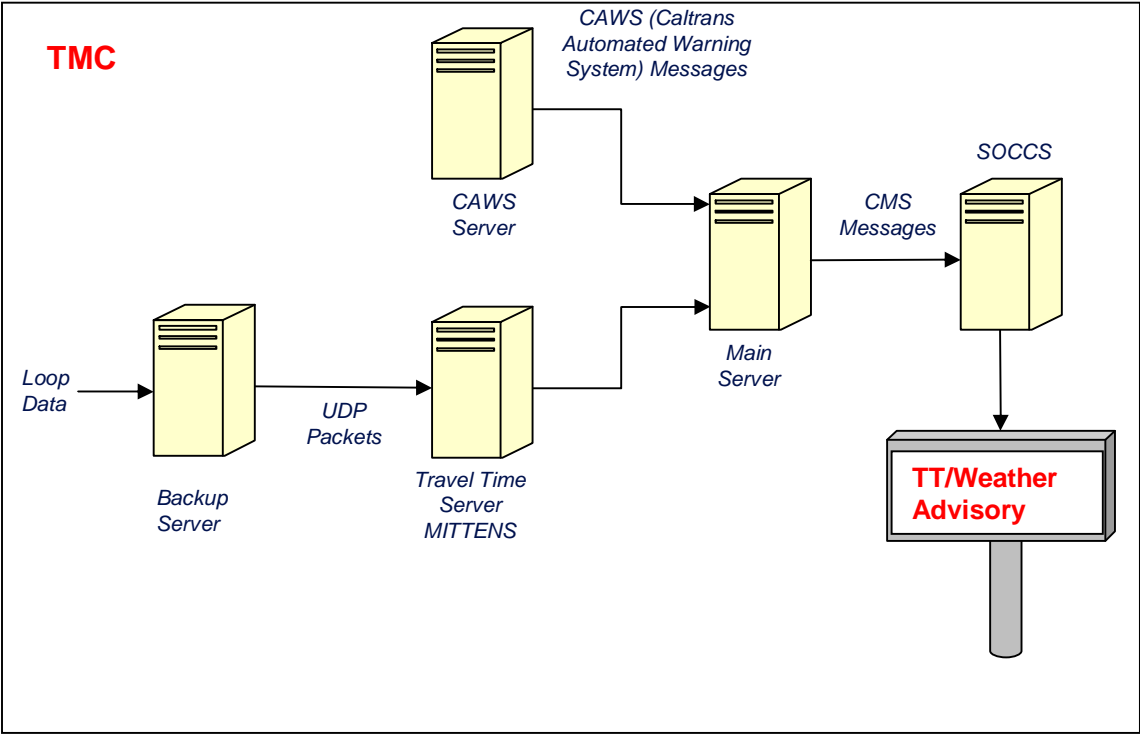
## 20 highway travel time signs



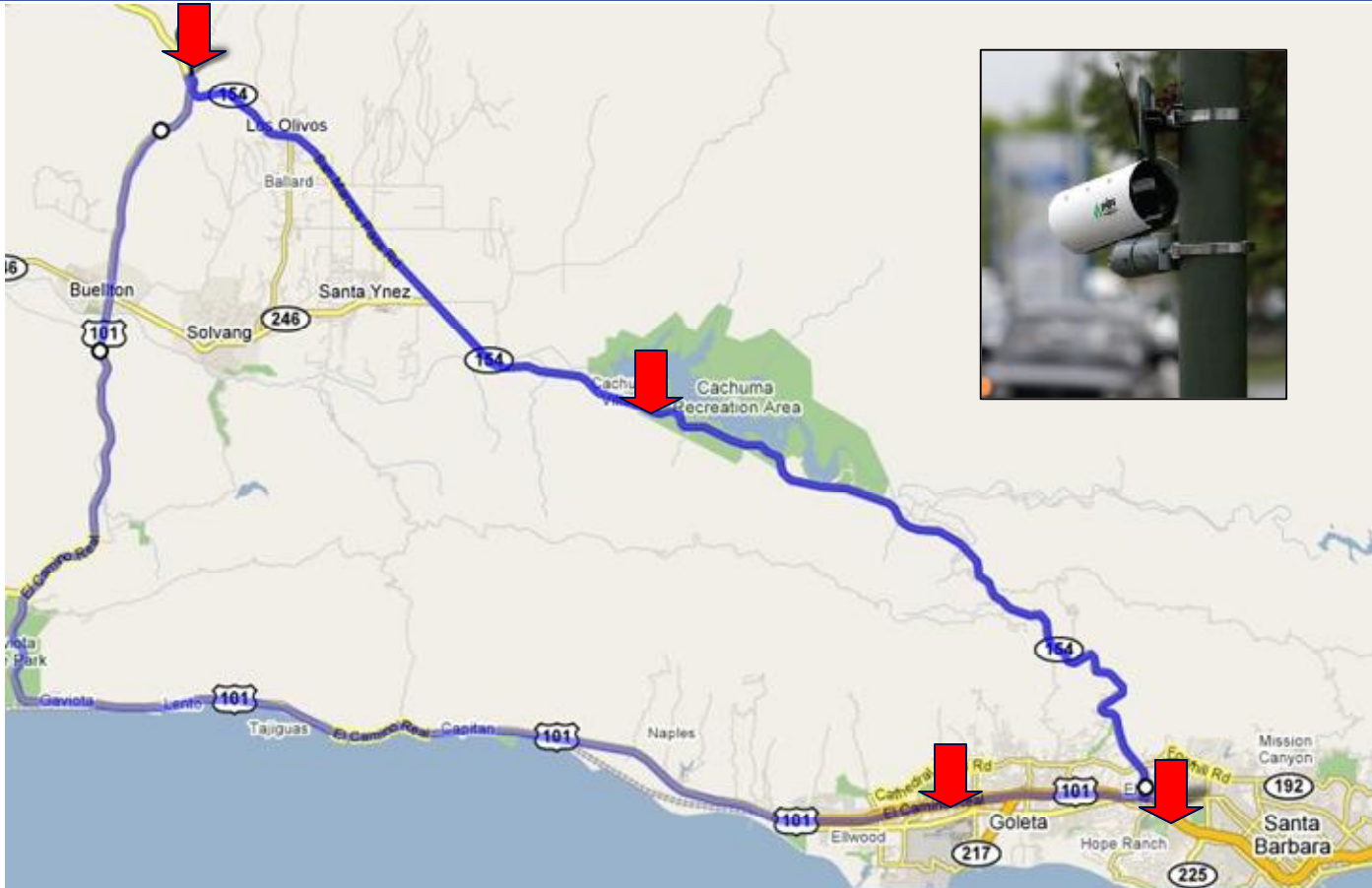
## 2 transit travel time signs



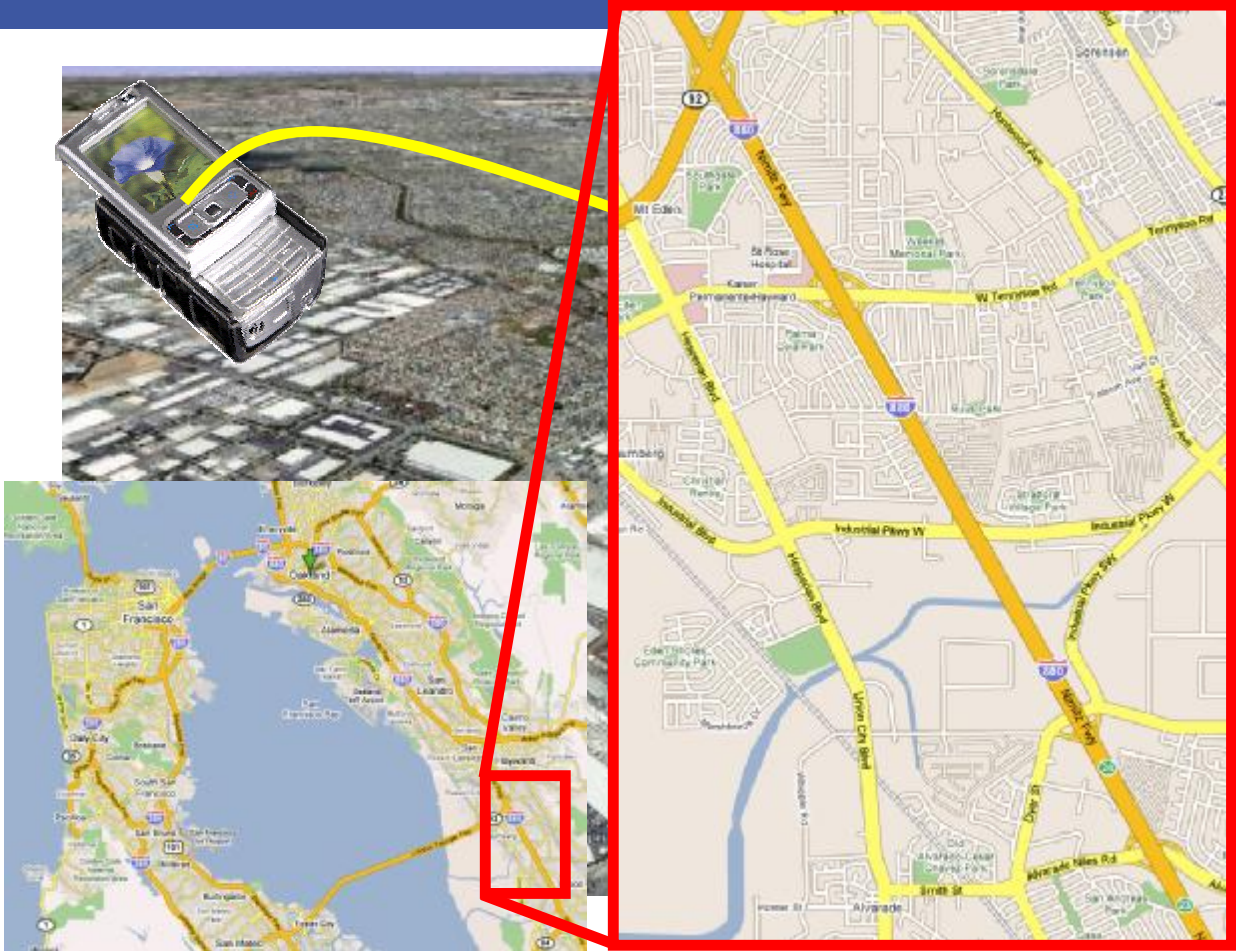
# 2-Travel Time on CMS- Stockton



# 3-Traffic Data Collection-US 101 & CA-154

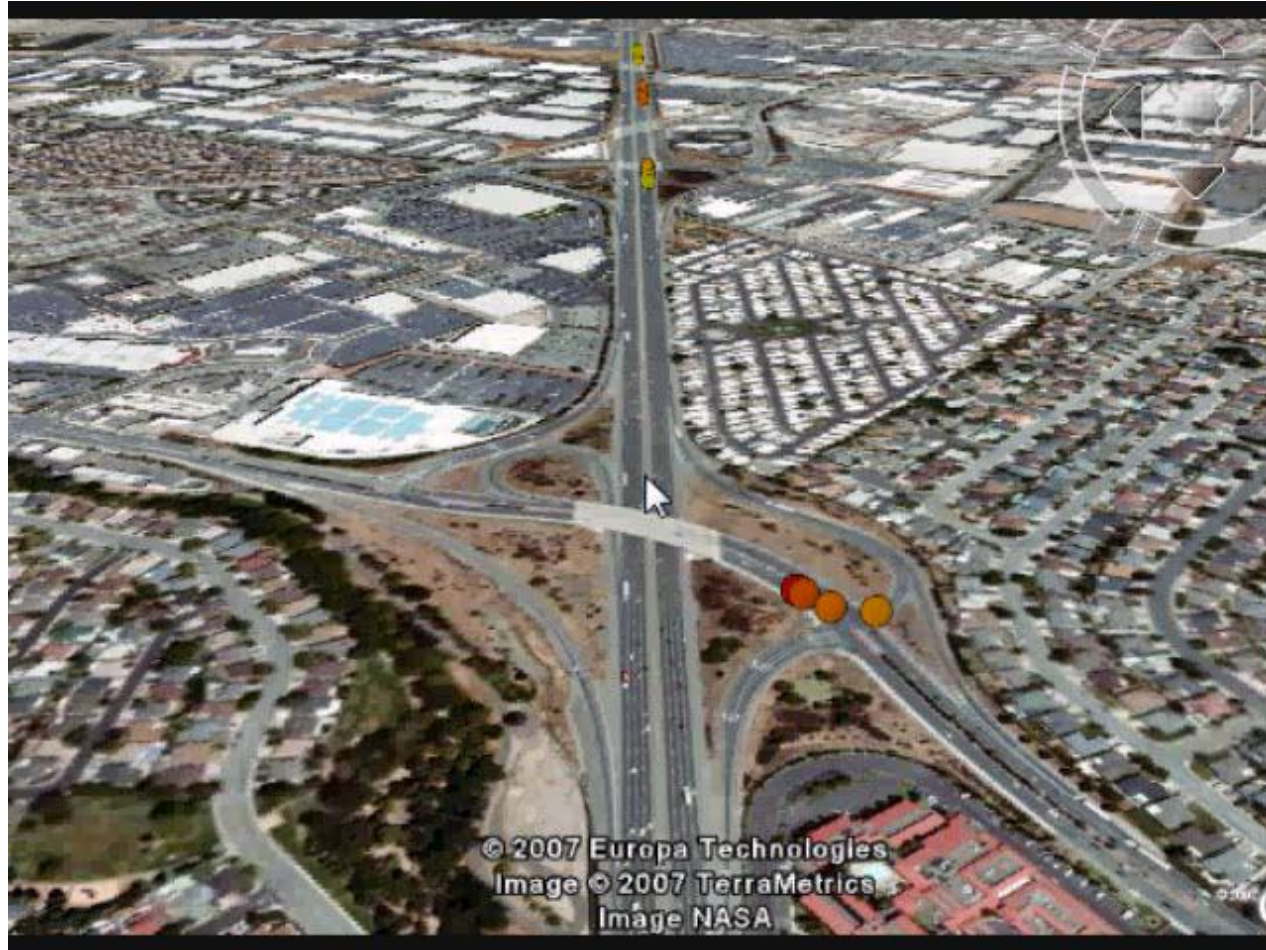


# GPS-Equipped Cell Phones as Traffic Probes



# GPS-Equipped Cell Phones as Traffic Probes

13



# Conclusions

14

- .. Need for expanding data coverage
- .. Hybrid solutions
- .. Public-Private Partnership
- .. Different requirements different solutions

Different Information Needs  
for Different Markets:  
**URBAN and RURAL**

Q & A

Ali Mortazavi  
March 4, 2008



# Different Information Needs for Different Markets: URBAN and RURAL

Ali Mortazavi  
March 4, 2008

# Traveler Information/Advance Traveler Information System

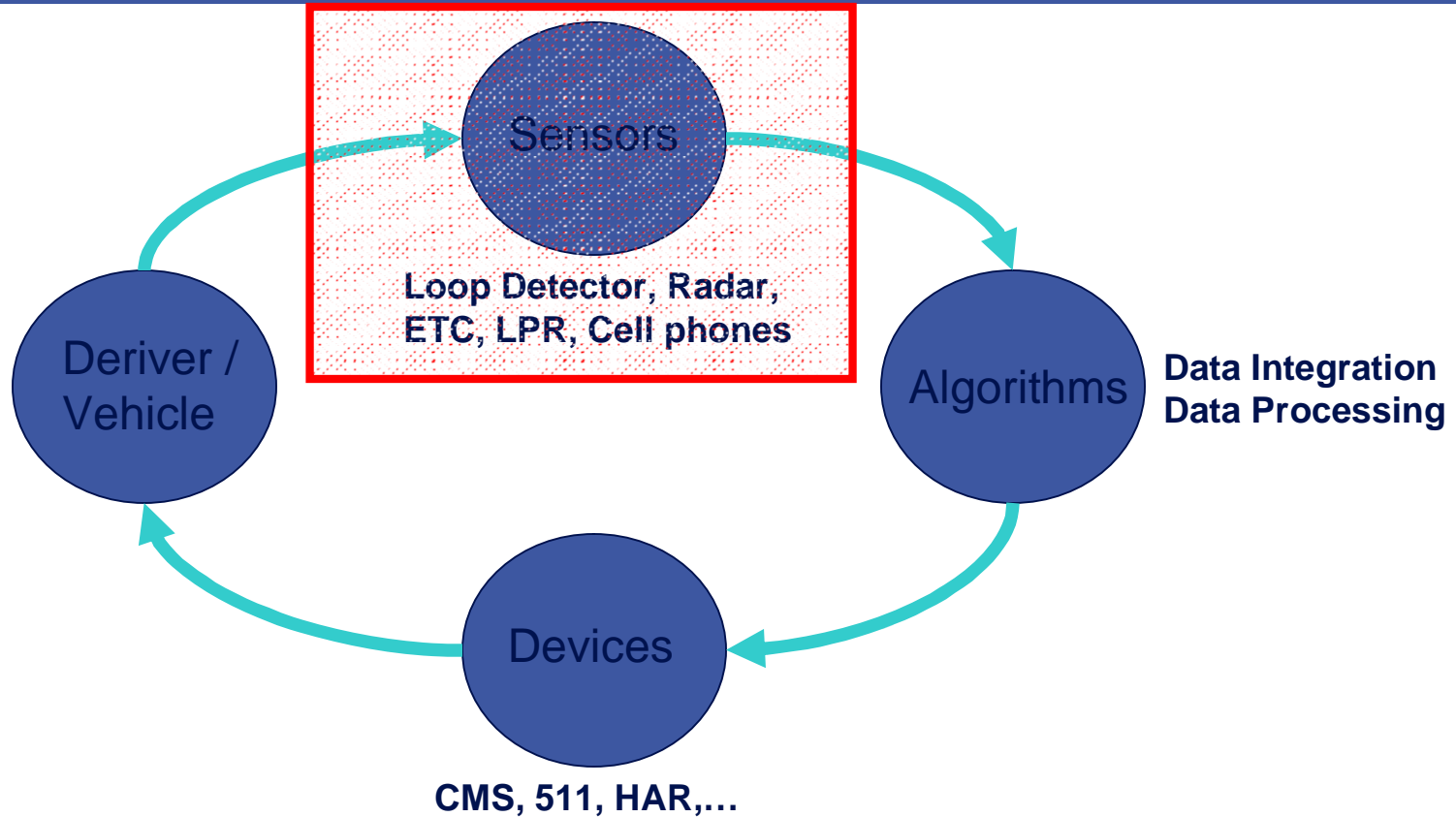
2

- Empower the public with the information
- Static information
- Real-time information
  - ✦ Travel time a valuable source



# Advanced Traveler Information System

3



# Detection Technologies

4

- Point Detection
- Segment Detection
- Floating Point/Cell Detection



# Point Detection

5

• Inductive Loop (ILD)



• Doppler Radar



• Video



• Doppler Microwave



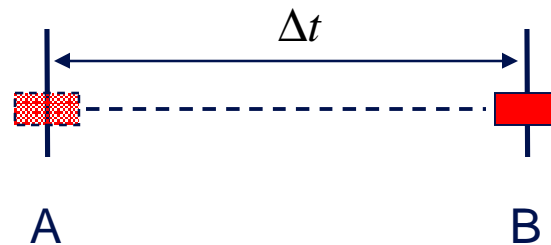
• Passive Acoustic

# Segment Reading

6

## Toll Tag Readers/License Plate Readers

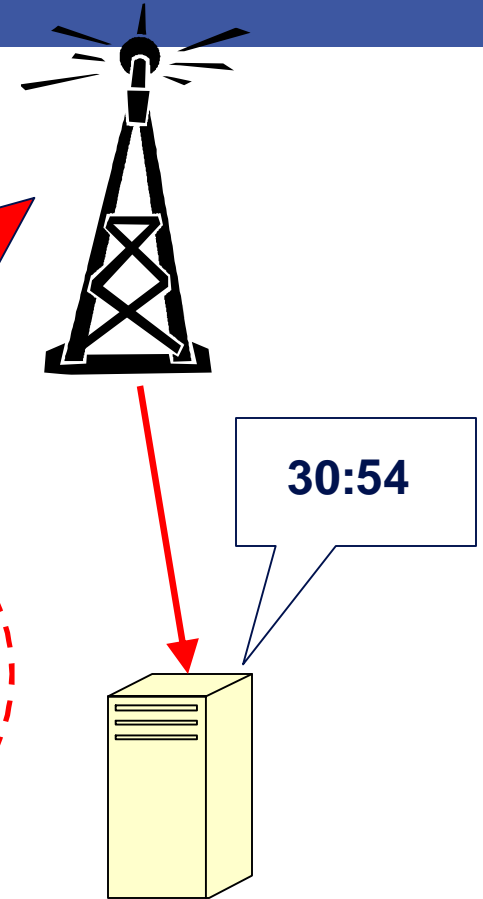
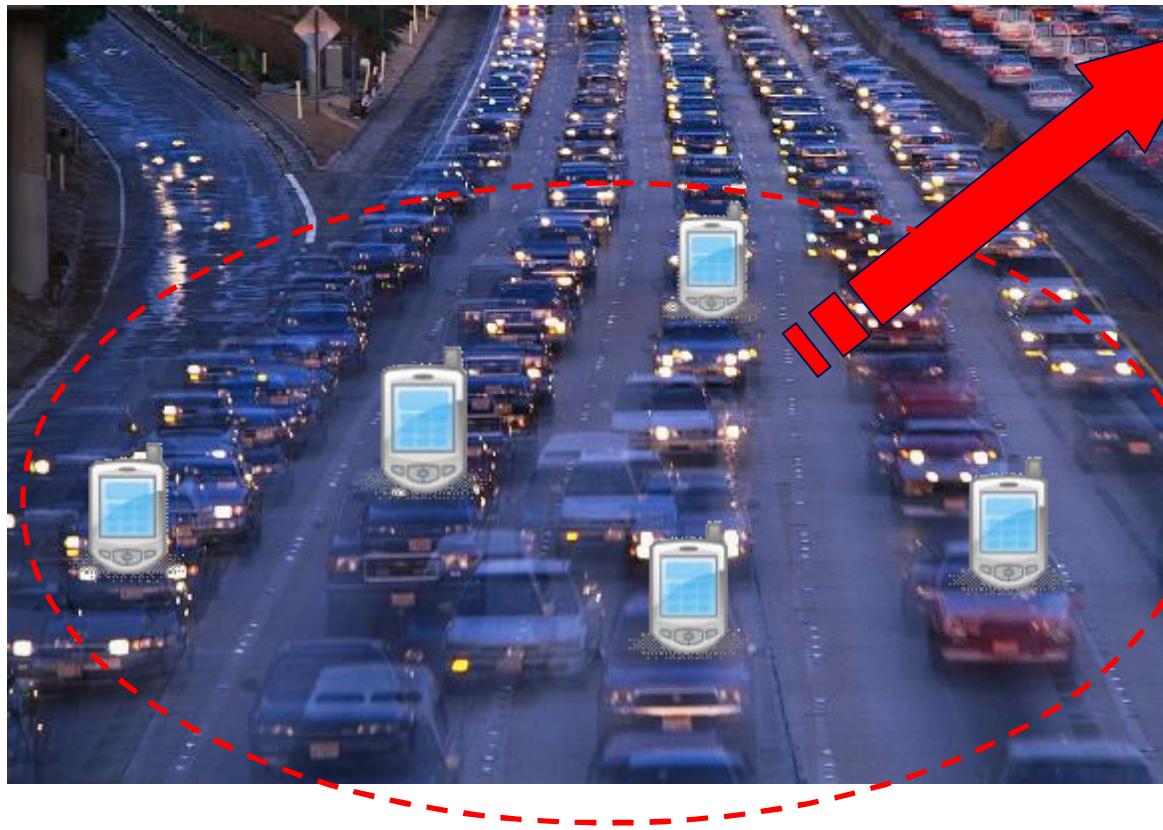
- Lag time on traffic data



# Floating Point

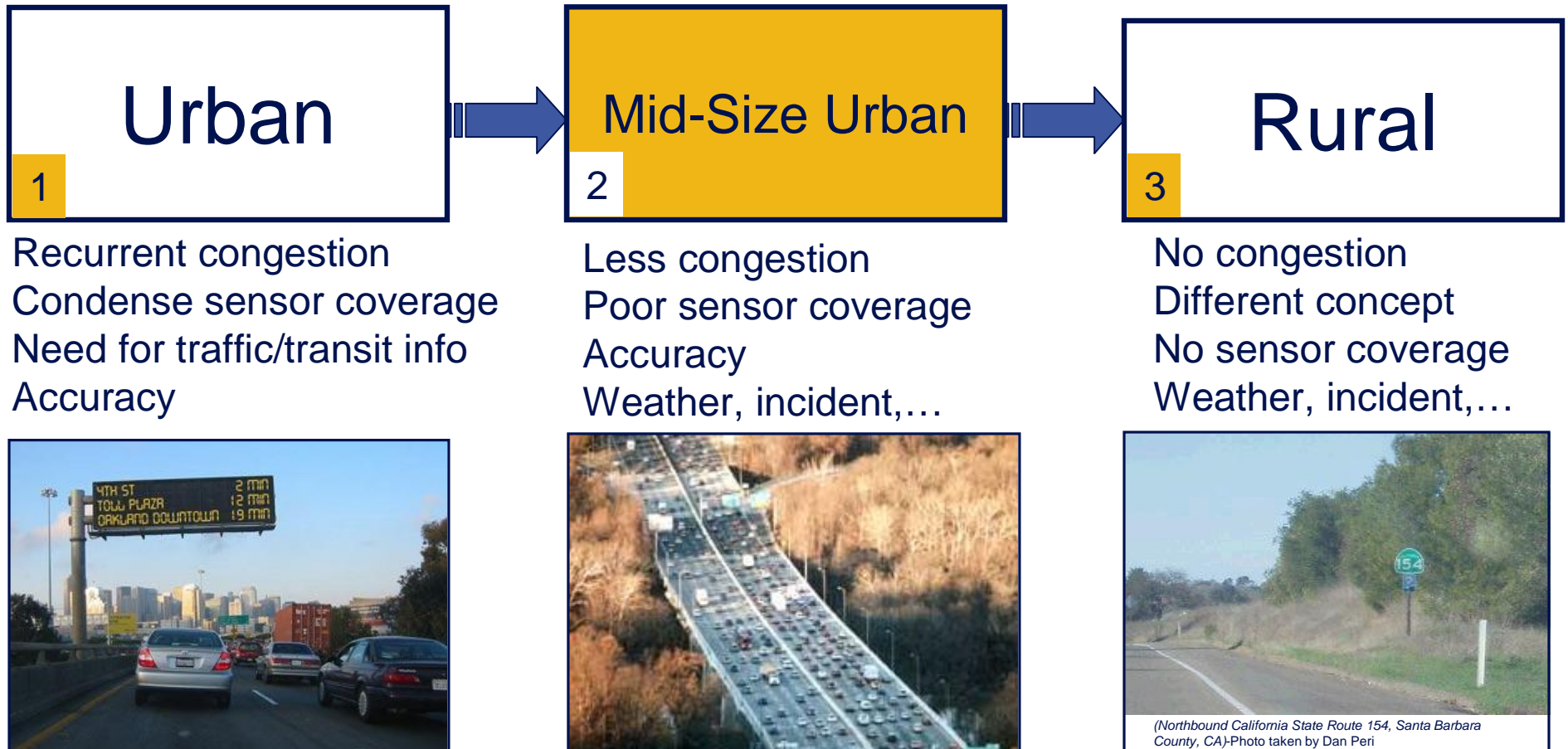
7

## Location Based Technologies

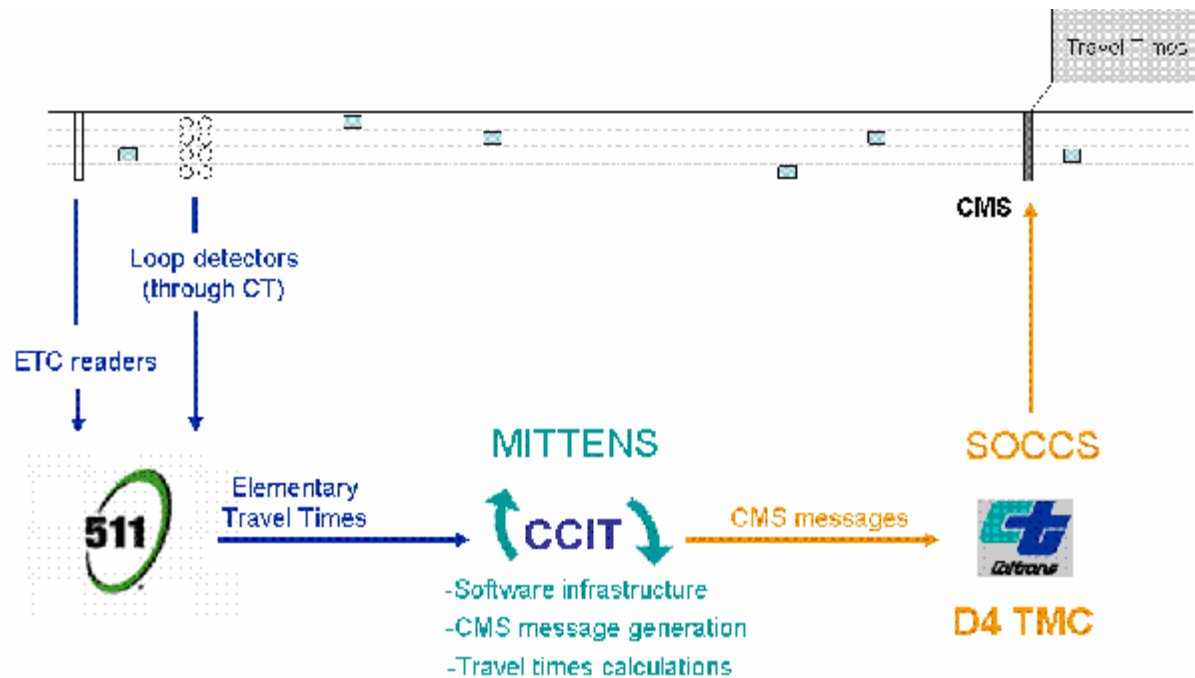


# Urban and Rural

8



# 1-Travel Time on CMS-The Bay Area



Schematic of Travel Time Display System in District 4

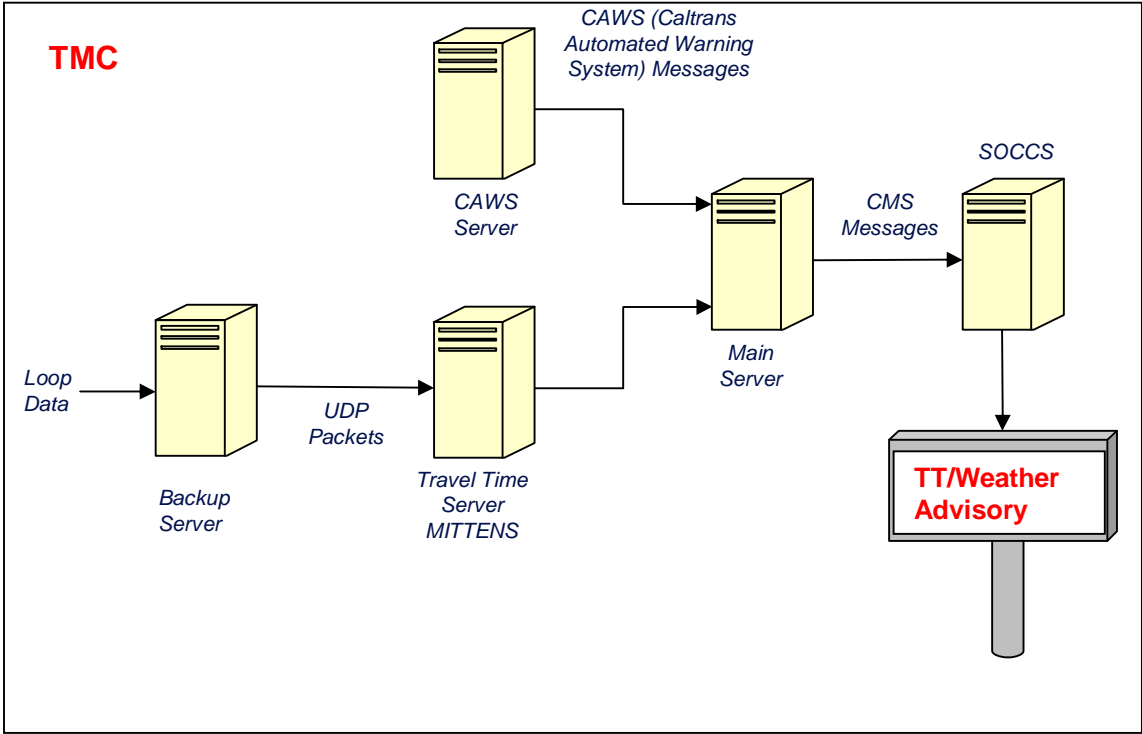
## 20 highway travel time signs



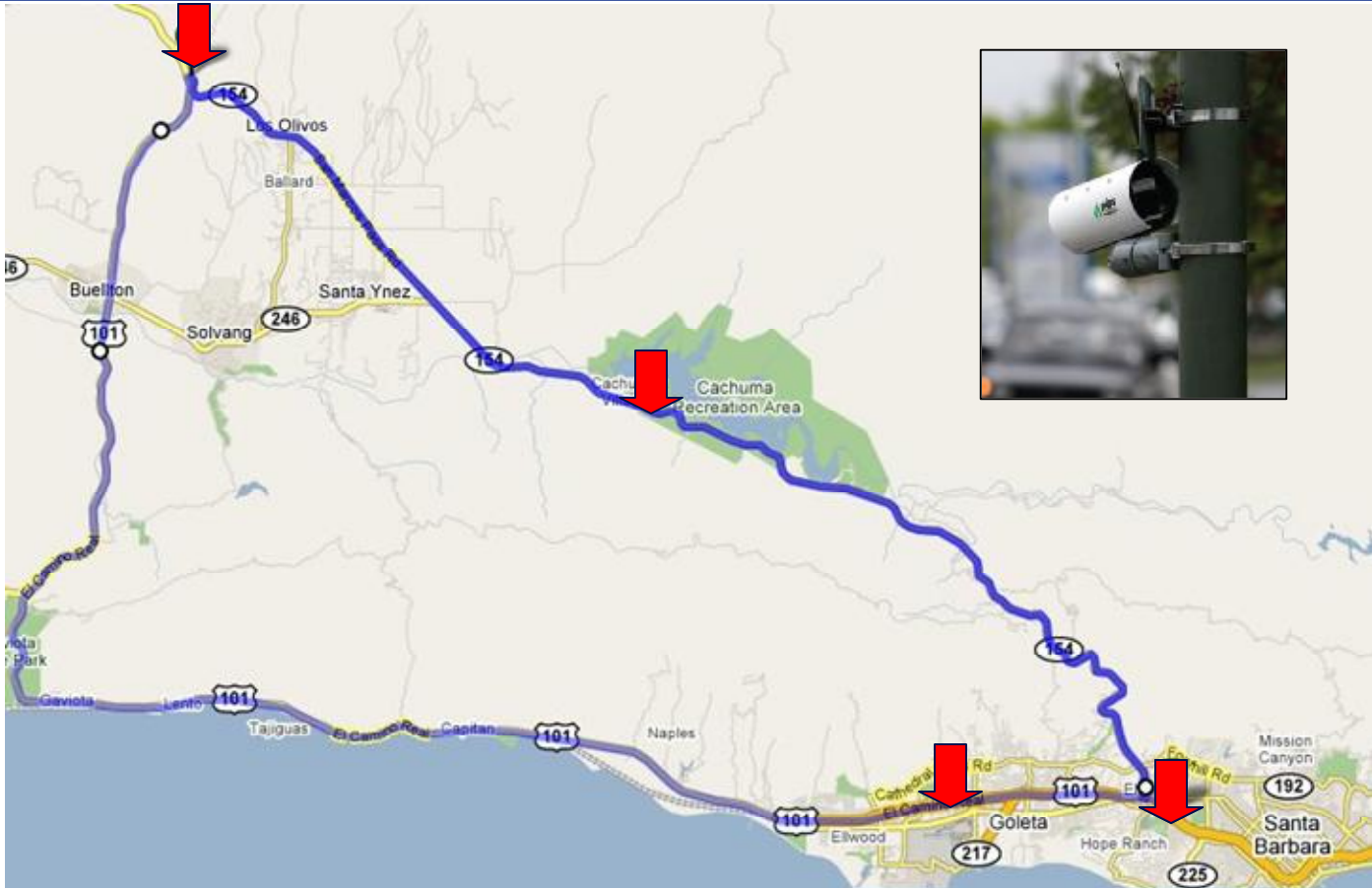
## 2 transit travel time signs



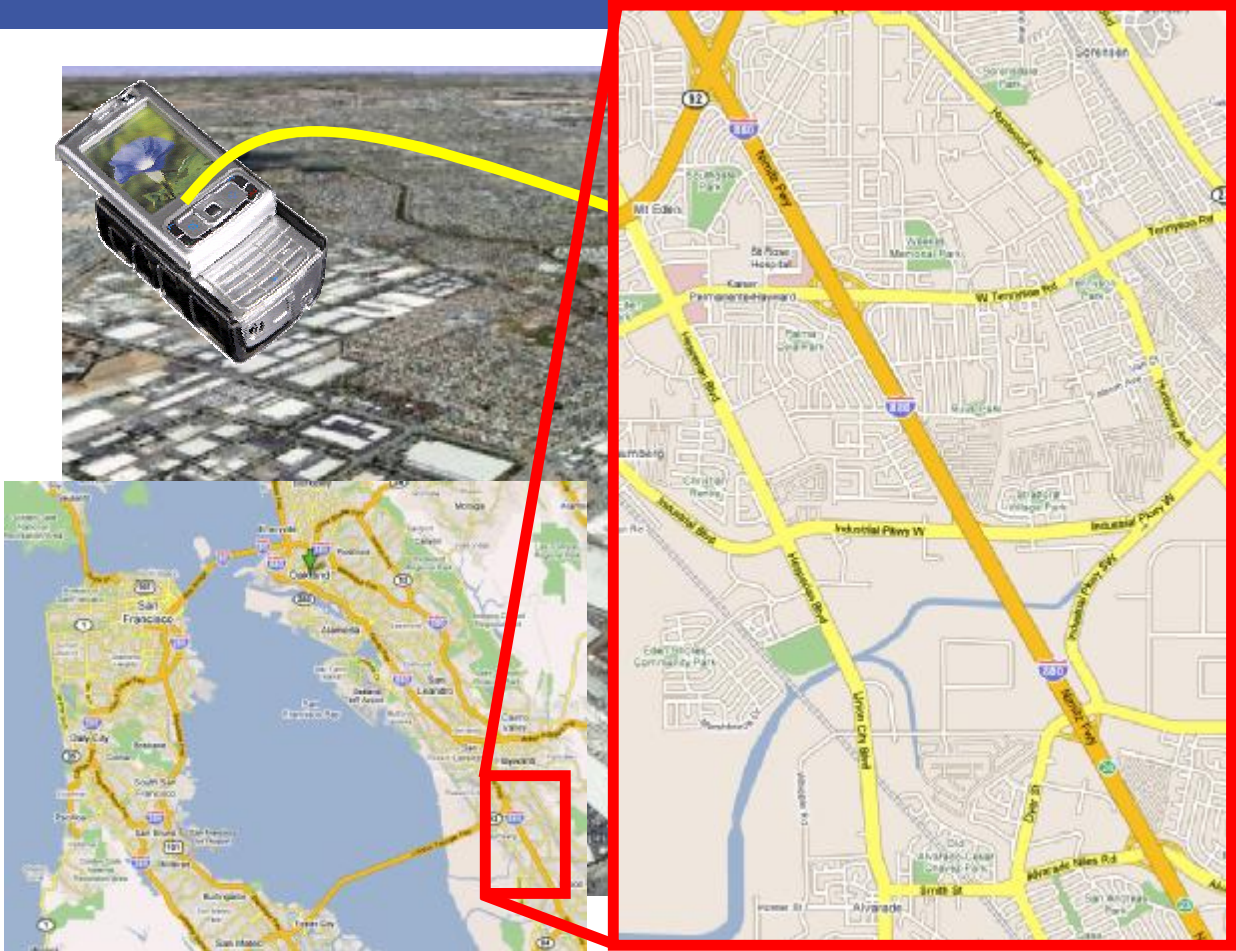
# 2-Travel Time on CMS- Stockton



# 3-Traffic Data Collection-US 101 & CA-154

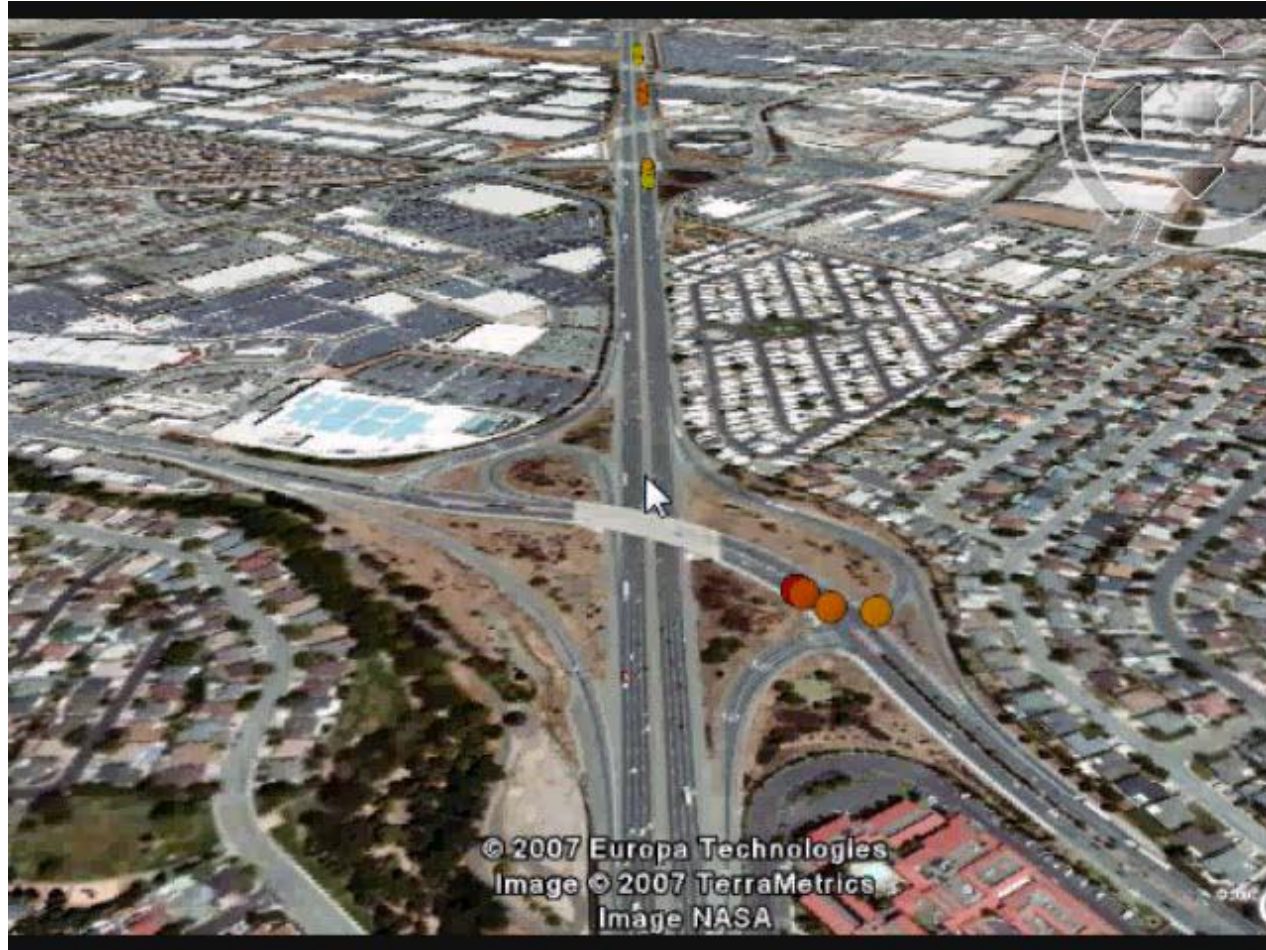


# GPS-Equipped Cell Phones as Traffic Probes



# GPS-Equipped Cell Phones as Traffic Probes

13



# Conclusions

14

- .. Need for expanding data coverage
- .. Hybrid solutions
- .. Public-Private Partnership
- .. Different requirements different solutions

Different Information Needs  
for Different Markets:  
**URBAN and RURAL**

Q & A

Ali Mortazavi  
March 4, 2008