



Fresno Council
of Governments

Fresno COG Regional Directory 2012

Updated January 2012

Fresno Council of Governments
2035 Tulare Street, Suite 201
Fresno, California 93721
Phone: (559) 233-4148
Fax: (559) 233-9645
Website: www.fresnocog.org

This information is being updated regularly on our website at www.fresnocog.org. Please see the website for the most current information.

Table of Contents

About Fresno COG

Organizational Chart.....	3
Staff Assignment Listing	5
Informational Brochure	9
Fresno COG Structure.....	10
Fresno COG's Major Functions	10

Member Agency Listings

City of Clovis.....	14
City of Coalinga	16
City of Firebaugh	18
City of Fowler.....	20
City of Fresno	22
City of Huron.....	26
City of Kerman	28
City of Kingsburg	30
City of Mendota.....	32
City of Orange Cove	34
City of Parlier	36
City of Reedley	38
City of San Joaquin.....	40
City of Sanger.....	42
City of Selma	44
County of Fresno	46

Other Member Agency Information

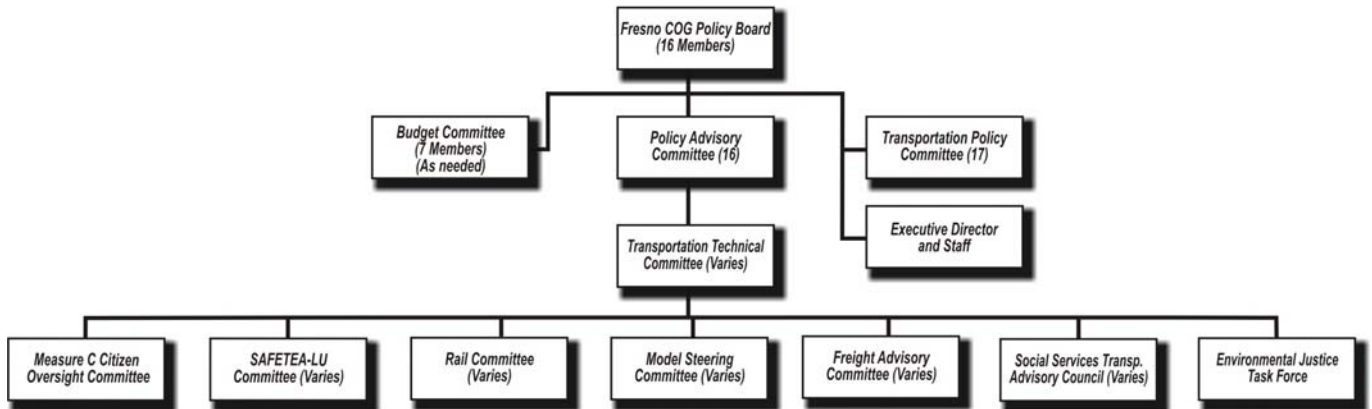
Member Agency Meetings.....	51
Month at a Glance	52
Fresno County and its 15 Cities	53
Estimated Distance Between Cities in Fresno County, Mileage Chart	54

Other Listings

Caltrans.....	57
COG Committees.....	58
Other Regional Transportation Boards..	59
Fresno Regional Agencies	60
Regional Agencies <i>Outside of Fresno County</i>	61
Communicating with Congress.....	62
Legislative Representatives	63
Reference Summary of Common Abbreviations	64



Exhibit 1
FY 2011-12 Overall Work Program
Proposed
Organization Chart



Fresno COG Staff Organizational Chart
To be updated

Fresno COG/FAX/FCRTA Staff Assignment Listing

Tony Boren tboren@fresnocog.org Voice Mail - 204	Executive Director	Administration & management of agency budget and staff. Includes program & policy development, intergovernmental relations, supervision/control of all work activities, etc. Measure C implementation, California Transportation Commission. May be contacted on any and all COG assignments.
Barbara Steck bjsteck@fresnocog.org Voice Mail - 202	Deputy Director	Administration & management of planning and support functions, San Joaquin Valley Blueprint Planning Program, Transportation Forum, Intergovernmental coordination, "One Voice" lobbying efforts to Washington, D.C. and Sacramento.
Mike Bitner mbitner@fresnocog.org Voice Mail - 216	Principal Planner	Supervision of planning staff and planning activities. Computer and server support. Valley Model Improvement Plan project manager.

Planning Activities:

Kathy Chung kchung@fresnocog.org Voice Mail - 214	Senior Regional Planner	Socio-economic data for transportation model, alternative transportation scenarios, Fresno Regional Data Center and U.S. Census Bureau Affiliate office, General data support
Clark Thompson clarkt@fresnocog.org Voice Mail - 203	Senior Regional Planner	Green Print, Rail Planning, COG Rail Committee, Freeway Service Patrol, Abandoned Vehicle Abatement Program (AVA), Transportation Enhancements (TE) Program, Aviation, Regional Housing Needs Allocation Plan, Bicycle and Non-motorized Transportation, Measure C New Technology Reserve Subprogram, Regional Transportation Plan (RTP)
Kristine Cai Kcai@fresnocog.org Voice Mail - 215	Senior Regional Planner	Transportation, land use and Air Quality Modeling, SB 375 program, GIS, Congestion Management Process.
Brenda Veenendaal Brendal@fresnocog.org Voice Mail - 219	Senior Regional Planner	Public Information materials, Fresno COG website, media relations, public information outreach, computer graphics design & support. Oversees operation of Valleyrides.com—Fresno COG's Rideshare Program, and the Measure C Carpool, Vanpool and Taxi Scrip Programs. Staffs the Measure C Citizen Oversight Committee.
Lauren Dawson ldawson@fresnocog.org Voice Mail - 217	Senior Regional Planner	Air quality policy issues, Liaison to state, federal and local air quality agencies, PM 2.5 Hot-spot assessments/analyses administration, CMAQ Program administration, Transportation Conformity administration, Project Manager-Golden State Corridor Economic Development Infrastructure Improvement Project, Regional Transportation Plan support, Alternative Fuels, Clean Cities Coalition, Statewide Transportation Conformity Working Group, San Joaquin Valley Interagency Coordination Group.
Kai Han khan@fresnocog.org Voice Mail - 206	Senior Regional Planner	Traffic Modeling, Conformity Modeling, GIS, SB 375, Traffic counts and monitoring report. Computer hardware and software support
Todd Sobrado todds@fresnocog.org Voice Mail - 207	Senior Regional Planner	Environmental Justice, Intelligent Transportation Systems (ITS), Project Manager for COGView website, Farmland Conservation Model Program, Land Buffer Task Force, JARC/New Freedom, Regional Traffic

		Mitigation Fee (RTMF) Program, Regional Clearinghouse
Melissa Garza mgarza@fresnocog.org Voice Mail - 210	Associate Regional Planner	Legislative Affairs, "One Voice" and "Valley Voice" Lobbying Efforts to Washington D.C. and Sacramento, Federal Transportation Improvement Program (FTIP) Administration, Regional Transportation Plan (RTP) support staff, STIP. Liaison to CTC, Self-Help Counties Coalition and California RTPA group.
Rob Terry rterry@fresnocog.org Voice Mail - 222	Associate Regional Planner	Blueprint, Valleywide Goods Movement, Airport Land Use Commission, computer hardware and software support
Laural Fawcett lfawcett@fresnocog.org Voice Mail - 223	Associate Regional Planner	Airport Land Use Commission (ALUC) Staff, TDA Coordination, Regional Traffic Mitigation Fee (RTMF) Program, Computer Graphics Design & Support, GIS/Mapping, Greenprint Coordination, General Support for Traffic Model and Demographics.
Lindsey Monge lmonge@fresnocog.org Voice Mail - 205	Associate Regional Planner	Demographics and traffic model support, GIS, FTIP and RTP support, FresnoTrak
Suzanne Martinez smartinez@fresnocog.org Voice Mail - 240	Assistant Regional Planner /Rideshare Vanpool Coordinator	Oversees day to day operations of Fresno COG's Valleyrides Program as well as the Measure C Taxi Scrip, Carpool and Vanpool Grant Programs.

Finance:

Les Beshears beshears@fresnocog.org Voice Mail - 209	Finance Director	Administration, budget, accounting, finance, management of accounting staff, Freeway Service Patrol
Mary Lopez maryl@fresnocog.org Voice Mail - 208	Accounting Manager	Various accounting, payroll, accounts payable and receivable
Toni Graham tgraham@fresnocog.org Voice Mail - 201	Assistant Accounting Manager	Meeting minutes, support to staff & other general office duties. Regional Traffic Mitigation Fee (RTMF) Program, Assist Accounting Manager, accounts payable.

Support Staff:

Marla Day mday@fresnocog.org Voice Mail - 212	Executive Assistant	Assist management/staff with special projects, calendaring, scheduling, powerpoint presentations, meeting planning and other office duties. Coordinate job assignments for clerical staff. TTC, PAC and COG Board Agendas, meeting minutes. Annual "One Voice" support staff, COG Quarterly Progress Report preparation, Regional Directory, Policy and Procedures Manual
Stephanie Maxwell smaxwell@fresnocog.org Voice Mail - 200	Receptionist	Receptionist, support to staff, inventorying and ordering office supplies, filing, copying, phones, mail & other general office duties. Maintains master mailing lists and data base.

Fresno Area Express Staff Members:

<p>John Downs John.Downs@fresno.gov 559-621-1502</p>	<p><i>Transit Planning Manager</i></p>	<p>Regional public transportation planning Regional transit coordination Public Transportation Infrastructure Study. FAX Planning Division Manager</p>
<p>Jeff Long Jeff.Long@fresno.gov 559-621-1436</p>	<p><i>Senior Regional Planner – Fresno Area Express (FAX)</i></p>	<p>National Transit Database Reporting, Transit Productivity Report, Short Range Transit Plan, Title VI Reporting, Staff SSTAC and Conduct Unmet Transit Needs Process, JARC/New Freedom, and public outreach.</p>

Fresno County Rural Transit Agency Staff Members:

<p>Jeffrey Webster jwebster_ruraltransit@fresnocog.org 559-233-6789 Voice Mail - 220</p>	<p><i>General Manager, Fresno County Rural Transit Agency (FCRTA)</i></p>	<p>Administration, budgeting, management and policy development to member agencies and Board of Directors for FCRTA programs, responsible for rural transit planning and implementation, FTA Section 5311, member of the Social Service Transportation Advisory Council (SSTAC), member of Transportation Technical Committee (TTC), Rural Unmet Transit Needs Study, co-designated with Fresno County Economic Opportunities Commission (FCEOC) as rural consolidated transportation service agency (CTSA) for social service transit</p>
<p>Sandra Ruiz sandr_ruraltransit@fresnocog.org 559-233-6789 Voice Mail - 221</p>	<p><i>Administrative Assistant</i></p>	<p>Assists the FCRTA General Manager with administrative and fiscal accounting of the FCRTA and its twenty subsystems, respond to public inquiries for transit service information, monthly pass program</p>



What is the Fresno Council of Governments?

The Fresno COG is a voluntary association of local governments, one of 25 in California and 522 nationwide. In 1967 elected officials of Fresno County and its incorporated cities informally created the Council to provide "a cooperative body" for the discussion and resolution of issues which go beyond their individual boundaries. Subsequent federal and state laws encouraged such efforts, and the agency was formalized in 1969.

Fresno COG fosters intergovernmental communication and coordination, undertakes comprehensive regional planning with an emphasis on transportation, provides for citizen involvement in the planning process and supplies technical services to its member governments.

In all these areas the Fresno COG serves as a consensus builder to develop an acceptable approach on how to handle problems that do not respect political boundaries.

How is the Council funded?

The Fresno COG is partially supported by contributed dues from its 16 members, however, the major revenue sources include federal and state grants. The Agency has no taxing or legislative authority.

Who are the members, their representatives, and how do they vote?

Fresno COG's member agencies are represented on the Policy Board by the Mayors of each incorporated city, and the Chairman of the County Board of Supervisors, or designated representatives.

The Policy Board is a governing body that establishes policy and guides work activities. They are assisted in making decisions by the Policy Advisory Committee (PAC), composed of the Chief Administrative Officer of each member agency, or their designated representatives. With the exception of urgency matters, all items must first be considered by the PAC before submission to the Policy Board.

The Board and PAC are assisted in the decision-making process by staff from their agencies, citizen and interest groups, and various technical advisory committees who comprise the Transportation Technical Committee, or TTC as it is commonly called.

The Fresno COG has a 'double-weighted' voting system. Each member has a percentage vote based upon population. To approve any action the vote must pass two tests:

- 1) Agencies representing over 40% of the population must be in favor of an action, and
- 2) A majority of all the members must support the action; that is, nine of the sixteen members.

POPULATION FOR JURISDICTIONS IN FRESNO COUNTY

JANUARY 1, 2011

	Population	Percent Share
Clovis	97,218	10.34%
Coalinga	17,996	1.91%
Firebaugh	7,619	0.81%
Fowler	5,719	0.61%
Fresno	500,121	53.19%
Huron	6,790	0.72%
Kerman	13,751	1.46%
Kingsburg	11,509	1.23%
Mendota	11,081	1.18%
Orange Cove	9,198	0.98%
Parlier	14,656	1.56%
Reedley	24,474	2.60%
Sanger	24,484	2.60%
San Joaquin	4,025	0.43%
Selma	23,395	2.49%
Unincorporated Fresno County	168,184	17.89%
Total Fresno County	940,220	100.00%

Source: State of California Department of Finance,
released April 29, 2011

Fresno Council of Governments' Structure

The Policy Board has established advisory committees to aid in the fulfillment of its responsibilities. The chart on page 3 shows the adopted organizational structure. Members of the Policy Board and the Budget Committee are elected officials. The Transportation Policy Committee is the Policy Board with a Caltrans representative added. Administrative staffs of the cities and county are represented on the Policy Advisory Committee. The remaining committees are composed of technical staff and citizens of the area.

Major Functions

Transportation Planning: These tasks are conducted in compliance with both federal and state requirements, generated by COG's designation as the Regional Transportation Planning Agency and Metropolitan Planning Organization for Fresno County.

The COG prepares a required **Regional Transportation Plan (RTP)**, which looks 25 years into the future and sets forth policies for development of highways, transit systems, air transportation, rail transportation, and bicycle and pedestrian facilities. As support to the RTP, a variety of planning studies and technical reports are prepared.

In 1986 Fresno County voters approved Measure "C", a 1/2 cent sales tax for transportation purposes. The COG is required by statute to prepare a Measure "C" Expenditure Plan and, of late, the 2006 Measure "C" Extension Expenditure Plan. The plan is prepared in close consultation and coordination with the cities, the County, Caltrans and the Fresno County Transportation Authority (administrators of the 1/2 cent tax) and various other community stakeholder groups.

Air Quality Planning: Fresno County does not currently meet the federally required standards for clean air. Therefore, strategies for transportation management are important. We are working with the San Joaquin Valley Air Pollution Control District to respond to the recognized need for cleaner air through air quality related transportation planning. Our planning activities are focused on reducing pollution generated through current and future transportation practices.

Abandoned Vehicle Abatement: The Fresno Council of Governments' Policy Board members also function separately as the Abandoned Vehicle Abatement (AVA) Service Authority for Fresno County. The Abandoned Vehicle Abatement Program provides for the removal of a vehicle from public or private property, by towing or other means, after the vehicle has been determined to be abandoned and is a visual blight or a safety hazard to the community. Ordinances in each jurisdiction are adopted to guide the removal decision. The Program is funded by a \$1 fee imposed on all registered vehicles in the county. The funds are divided among the cities and the county in the following manner: one-half of the funds are disbursed based on population and the other half are disbursed based on the number of abatements.

Computerized Transportation Simulation Models: These models aid in providing base information relevant to General Plans, Circulation Elements, and Air Quality analysis. Travel demand (transit and vehicles on streets) and congestion on existing and planned streets and freeways is predicted through this tool.

COG's Traffic Monitoring Program: This program provides current and consistent data on county-wide traffic. Selected sites are monitored through traffic counts, and the traffic volume results are used by member agencies in their operations and by the COG to support the transportation model.

Fund Administration: As a result of the **Safe, Accountable, Flexible, Efficient Transportation Equity Act: A Legacy for Users (SAFETEA-LU)**, the Fresno COG has direct responsibility for determining how two federal program funds are spent in the Fresno County area. They are the **Regional Surface Transportation Program (STP)** and the **Congestion Mitigation & Air Quality Program (CMAQ)**. In addition, the State of California has vested responsibility in the Fresno COG for a portion of the **Transportation Enhancement Program (TE)**. The federal programs have strict project eligibility criteria. Project nominations are solicited by the Fresno COG from eligible agencies, and then nominations proceed through a selection process which results in a listing of projects eventually adopted by the Policy Board. This listing enables agencies to pursue federal funding from the Department of Transportation to implement the projects. In addition, TE projects may pursue funding from the California Transportation Commission.

Transportation Development Act fund administration concerns two types of funds. The **Local Transportation Fund (LTF)**, derived from a portion of state sales tax that comes back to local government for funding of bicycle and pedestrian facilities, public transportation, or streets and roads, and the **State Transit Assistance Fund (STA)** that is derived from a portion of the motor vehicle fuel sales tax that supports public transportation services. Both funds are apportioned to member agencies on a population basis, though some of the STA funds are apportioned directly to transit operators based on their farebox revenues.

Rideshare Program: Fresno COG's Ridesharing agency hosts a website at www.valleyrides.com in partnership with California State University, Fresno. The site provides free computer matching for those interested in carpooling or vanpooling in/from Fresno County. The program assists employers in setting up commute alternative programs for their employees, and they support and promote transportation options such as transit, bicycling and telecommuting.

Areawide Clearinghouse Review of Grant Applications: Fresno COG serves as a clearinghouse for federal grant applications that are reviewed to determine if proposals would duplicate activities of other agencies and assure there is no conflict with local adopted plans and policies. The COG does not have the authority to approve or disapprove grants, but does forward its recommendations through the State Clearinghouse and on to the federal funding agency.

Member Agency Assistance: Fresno COG provides specialized technical assistance to member agencies, particularly those with limited staff and financial resources. These services have included fiscal management and computer applications support, traffic engineering studies, and special planning studies.

Housing Planning: Fresno COG is involved in housing planning, aiding members with required State Housing Element compliance.

Freeway Service Patrol: Fresno COG, Caltrans and the California Highway Patrol implement a Freeway Service Patrol along Freeways 41, 99, 168 and 180 through Fresno. A private tow truck company is contracted to provide patrol service Monday through Friday during morning and evening commute hours. It will provide either free on-the-spot quick-fixes or towing services to stranded motorists.

San Joaquin Valley Regional Planning Blueprint: The San Joaquin Valley Regional Blueprint will provide a planning process and products to support long-range planning for the eight MPOs in the region and compliment the work of the San Joaquin Valley Partnership.

Fresno COG's One Voice: Fresno COG's lobbying effort unites Fresno County communities and regional interests in a voluntary and collaborative effort to seek federal and state funds annually for regionally significant projects.

Fresno COG Member Agency Listings

Member Agencies:

The cities of

Clovis 14

Coalinga..... 16

Firebaugh..... 18

Fowler 20

Fresno..... 22

Huron 26

Kerman 28

Kingsburg..... 30

Mendota 32

Orange Cove..... 34

Parlier..... 34

Reedley..... 36

San Joaquin 38

Sanger 40

Selma..... 42

County of Fresno 44

City of Clovis



1033 Fifth St., Clovis, CA 93612
Phone: (559) 324-2010 FAX: (559) 324-2840
Internet Website www.cityofclovis.com

City Council

The Clovis City Council meets on the first, second and third Mondays of the month at 6:00 p.m.

*COG Policy Board Representative

Jose G. Flores, Mayor*
324-2010
Email: Josef@cityofclovis.com

Lynne Ashbeck, Pro Tem
324-2010
Email: lynnea@cityofclovis.com

Harry Armstrong
324-2010
Email: harrya@cityofclovis.com

Bob Whalen
324-2010
Email: bobw@cityofclovis.com

Nathan Magsig
324-2010
nathanmagsig@cityofclovis.com

Planning Commission

The Planning Commission meets on the second and fourth Thursdays of the month at 7:00 p.m.

Greg Ayello Chair
1033 Fifth St.
324-2340

Staff

City Manager
Rob Woolley, 324-2074
Email: robw@cityofclovis.com

Assistant City Manager
John Holt, 324-2072
Email: johnh@cityofclovis.com

Executive Assistant
Jacquie Pronovost, 324-2063
Email: jacquiiep@cityofclovis.com

City Clerk
John Holt 324-2062
FAX 324-2840
Email : Johnh@cityofclovis.com

Finance Director/Treasurer
Jamie Hughson 324-2106
FAX – 324-2845
Email: jamieh@cityofclovis.com

City Attorney
David Wolfe, 431-5600
FAX- 291-9366

Public Utilities Director
Mike Leonardo, 324-2613
FAX- 324-2862
Email: mikel@cityofclovis.com

Recreation Coordinator
Bryan Hines, 324-2776
FAX- 324-2857
Email: bryanh@cityofclovis.com

Planning & Development Services
Director
Dwight Kroll
324-2349
FAX- 324-2866
Email: dwrightk@cityofclovis.com

City Engineer
Steve White, 324-2355
FAX- 324-2844
Email: stevew@cityofclovis.com

Police Chief
Janet Davis, 324-2407
FAX- 324-2854
Email: janetd@cityofclovis.com

Interim Fire Chief
Lee Kraft
324-2270
FAX- 324-2846
Email: kraft@cityofclovis.com

Community & Economic
Development Director
Tina Sumner, 324-2099
FAX- 324-2841
Email: tinas@cityofclovis.com

General
Services Director
Robert Ford, 324-2700
FAX- 324-2840
Email: roberff@cityofclovis.com

General Services Manager
Shonna Halterman
324-2767
Email : shonnah@cityofclovis.com

Commissions

Personnel Commission
Kevin Dale, Chair 324-2735

Clovis Senior Services
850 Fourth Street
Clovis, CA 93612
324-2750

Chamber of Commerce

Mark Blackney, President, CEO
325 Pollasky Avenue
Clovis, CA 93612
299-7273
FAX- 299-2969

Transit

Clovis Transit Information
324-2768

Amy Hance, Transit Supervisor
155 N. Sunnyside
Clovis, 93612
324-2767
FAX- 324-2853
amyh@cityofclovis.com

Round-up--Disabled & Seniors
324-2760

Stageline--General Public
324-2770

City of Clovis

Fast Facts

"Clovis - A Better Way of Life"

Once home to ranchers, farmers, and the old mill at the end of Shaver Lake Flume, Clovis has become a community that provides a unique blend of rural and urban living. Clovis has achieved recognition as a "festival city" and celebrates Big Hat Days, the annual Clovis Rodeo and Parade, seasonal Farmer's Market in Old Town Clovis, Clovisfest Music Festival, and Children's Electric Christmas Parade.

Clovis is a community that supports families through excellent educational opportunities, responsive public safety services, clean streets and parks, and planned community growth to bring balance to the local economy and its residents.

January 1, 2011 State of California Department of Finance Information

Population	97,218
Number of Housing Units	35,679
Vacancy Rate	5.34%

April 1, 2010 U.S. Census Information

Population	95,631	Age Distribution	
Number of Housing Units	35,306	% under 5 years	7.2%
Vacancy Rate	5.34%	% under 18 years	28.1%
Average Household Size	2.85	% 21 years and over	67.5%
		% 55 years and over	21.2%
Race/Ethnic Distribution		% 60 years and over	15.4%
White	57.5%	% 65 years and over	10.6%
Hispanic	25.6%	Median Age	34.1
Black	2.5%	Occupied Housing Unit Tenure	
American Indian & Alaskan Native	0.8%	Percent Owner-Occupied	62.2%
Asian & Pacific Islander	10.4%	Percent Renter-Occupied	37.8%
Other	3.2%		

2005-2009 U.S. Census American Community Survey

Median Family Income	\$76,863	Percent of Persons 25 Years of Age and Older Who Have Completed High School or Equivalent	88.8%
Median Household Income	\$62,445	Percent of Persons 25 Years of Age and Older Who Have Completed a Bachelor's Degree	29.7%
Percent of Persons Below Poverty Level	10.1%		
Percent of Children Under 18 Years of Age Below Poverty Level	11.1%	Percent of Persons 5 Years of Age and Older Who Speak a Language Other Than English at Home	21.1%

Form of Government: City Council - City Manager, General Law City
 Local Newspaper: Fresno Bee, 1626 E Street, Fresno, CA 93786. Phone: 559-441-6111

City of Coalinga



155 W. Durian, Coalinga, California 93210
Phone: (559) 935-1533 FAX: (559) 935-5912
Internet Website/Email: www.coalinga.com

City Council

The Coalinga City Council meets on the first and third Thursdays of the month at 7:00 p.m.

*COG Policy Board Representative

Ron Ramsey, Mayor*
(W) 935-1533

coalingarramsey@sbcglobal.net

Mike Oxborrow, Pro Tem 935-1533

mikeoxborrow@sbcglobal.net

Tony Garcia, Councilmember
935-1533

tbg2012@lightspeed.net

K. William Bourdeau
Councilmember
935-1533

wbourdeau@coalinga.com

Ron Lander
Councilmember
935-1533

rlander@coalinga.com

Planning Commission

The Planning Commission meets on the second and fourth Tuesdays of the month at 6:30 p.m.

Chair: Ken Stoppenbrink

Vice Chair: vacant

Rocco Papietro, Commissioner

Anne Jorgens, Commissioner

Richard E. Hill, Commissioner

Staff

City Manager
Darrel Pyle, 935-1533
FAX- 935-5912
dpyle@coalinga.com

Assistant to City
Manager/Deputy City Clerk
Cindy Johnson, 935-1533
cjohnson@coalinga.com

MIS Coordinator
Vacant, 935-1533

City Clerk (elected)
Wanda Earls, 935-1533

Economic Development
Assistant
Shannon Jensen, 935-1533

City Treasurer
Vacant, 935-1533

Human Resources Director/
Training Officer
Marissa Chavez, 935-1533

Risk Management
Mercedes Garcia, 935-1533

Assistant Community Development
Director
Sean Brewer, 935-1533

Utilities Director
Vacant, 935-1533

City Engineer
Nick Bruno
Precision Civil Engineering
559-449-4500

Claremont Custody Center Director
Jim Applegate, 935-0851

Interim Fire Chief
, 935-1533
155 W. Durian Ave., Coalinga, CA

Police Chief
Cal Minor, 935-1525
270 North 6th St.
Coalinga, CA 93210

City Attorney
Dale Bacigalupi, 431-5600

Coalinga-Huron Recreation and
Parks District
Bd. President: Scott Yeager
General Manager: vacant
935-0727

West Hills Community College Dist.
President: Dr. Willard Lewallen
934-2000

Chamber of Commerce

President: Bobbie Eade
CEO: Katie Delano
380 Coalinga Plaza
Coalinga, CA 93210
935-2948
FAX- 935-9044,
Email:
exec@coalingachamber.com

Transit

Coalinga Transit
Schedule/Pickup 935-1511

Municipal Airport

Mercedes Garcia, 935-1533

City of Coalinga

Fast Facts

In the late 1800's early settlements occurred in the Pleasant Valley upon the discovery of coal in Western Fresno County. Mule trains transported the coal to the transfer station to serve the Southern Pacific Railroad. Coaling Station A & B became the loading points for the railroad. "Coalinga" was derived from dropping "station" (Coaling Station A) from the name of this loading point. The later discovery of oil and gas adjacent to Coalinga soon prompted another wave of development. Oil boomers arrived, and the town grew and prospered.

Coalinga incorporated as a city in 1906. It is now a full service city with a community college (West Hills Community College), a community hospital and library, a municipal airport (5,000 foot primary runway), and two major state facilities (Pleasant Valley State Prison and Coalinga State Hospital). Coalinga is located along Interstate 5 in the Central Valley as a central point accessible to the major cities within the Golden State. Commercial and industrial opportunities abound.

January 1, 2011 State of California Department of Finance Information

Population	17,996
Number of Housing Units	4,340
Vacancy Rate	10.32%

April 1, 2010 U.S. Census Information

Population	13,380	Age Distribution	
Number of Housing Units	4,344	% under 5 years	8.0%
Vacancy Rate	10.31%	% under 18 years	28.1%
Average Household Size	3.02	% 21 years and over	66.4%
		% 55 years and over	17.6%
Race/Ethnic Distribution		% 60 years and over	12.0%
White	37.7%	% 65 years and over	7.9%
Hispanic	53.5%	Median Age	31.9
Black	3.8%		
American Indian & Alaskan Native	0.6%	Occupied Housing Unit Tenure	
Asian & Pacific Islander	2.9%	Percent Owner-Occupied	51.2%
Other	1.4%	Percent Renter-Occupied	48.8%

2005-2009 U.S. Census American Community Survey

Median Family Income	\$41,008	Percent of Persons 25 Years of Age and Older Who Have Completed High School or Equivalent	63.0%
Median Household Income	\$43,114	Percent of Persons 25 Years of Age and Older Who Have Completed a Bachelor's Degree	8.8%
Percent of Persons Below Poverty Level	19.2%		
Percent of Children Under 18 Years of Age Below Poverty Level	25.8%	Percent of Persons 5 Years of Age and Older Who Speak a Language Other Than English at Home	43.9%
Form of Government:	City Council - Manager		
Local Newspapers:	Coalinga Recorder, 192 E. Elm Ave., Suite 103, Coalinga, CA 93210		
	Phone: 559-935-3434		

City of Firebaugh



1133 P Street, Firebaugh, Ca 93622
Phone: (559) 659-2043
FAX: (559) 659-3412
Website: www.ci.firebaugh.ca.us

City Council

The Firebaugh City Council meets on the first and third Mondays of the month at 6:30 p.m.

*COG Policy Board Representative

Rod Lake, Mayor
rlzano@ci.firebaugh.ca.us

Jim Lowe, Pro Tem*
rlzano@ci.firebaugh.ca.us
Chris DeFrancesco
659-2043
rlzano@ci.firebaugh.ca.us

Javier Marquez
(W) 659-2043
rlzano@ci.firebaugh.ca.us

Dr. Marcia Sablan
659-3037
rlzano@ci.firebaugh.ca.us

Planning Commission

The Firebaugh Planning Commission meets on the second Monday of each month at 6:00 p.m.

Mark Fickett, Chair (W)
659-2043
Ivan Garcia, 659-2043
Marcel Hetu (W) 659-2043
Ron Parker (W) 659-2043
Jack Minnite (W) 659-2043
Joshua Sailer, 659-2043

Staff

City Manager
Laura Weyant (OCT), 659-2043
Email:
citymanager@ci.firebaugh.ca.us

City Clerk
Vacant, 659-2043

Deputy City Clerk/
Administrative Analyst
Rita Lozano, 659-5904
rlzano@ci.firebaugh.ca.us

Treasurer
Vacant, 659-2043

City Attorney
Dale Bacigalupi, 431-5600

Public Works Director
Ben Gallegos, 659-5905

Police Chief
Elsa Lopez, 659-3051

Fire Chief
John G. Borboa, 659-2061

Finance Director
Odi Ortiz, 659-5903

City Engineer
Mario Gouveia
456 Sixth Street
Gustine, CA 95322
(W) 209-854-3300

City Planning Consultant
Karl Schoettler
Collins and Schoettler
1002 West Main St.
Visalia, CA 93291
734-8737
FAX- 734-8767

Community Services Coordinator
Isabel Saldivar
1601 Thomas Convoy, 659-3536

Chamber of Commerce

Linda DeFrancesco-President
P.O. Box 580
Firebaugh, CA 93622
www.firebaughchamber.org
559-916-1015
Fax: 296-5082
Email: info@firebaughchamber.org

Transit

Firebaugh Transit
1-800-325-7433

Airport

Firebaugh Airport
659-2043

City of Firebaugh

Fast Facts

Incorporated in 1914, Firebaugh has grown from a "sheep shearing station and ferry crossing," to an agriculture based city. Before the railroad, the San Joaquin River was the major thoroughfare to upstream communities. The ferry was the major crossing for prospectors heading for gold country.

Ferries were the only way to cross the river until the late 1800's when the first bridges were built. The San Joaquin River played a major role in settling of the valley and Firebaugh is one of the oldest historical towns on the Westside.

January 1, 2011 State of California Department of Finance Information

Population	7,619
Number of Housing Units	2,103
Vacancy Rate	8.37%

April 1, 2010 U.S. Census Information

Population	7,549	Age Distribution	
Number of Housing Units	2,096	% under 5 years	9.7%
Vacancy Rate	8.40%	% under 18 years	36.0%
Average Household Size	3.93	% 21 years and over	58.4%
		% 55 years and over	14.0%
Race/Ethnic Distribution		% 60 years and over	9.7%
White	7.5%	% 65 years and over	6.5%
Hispanic	91.2%	Median Age	26.4
Black	0.3%	Occupied Housing Unit Tenure	
American Indian & Alaskan Native	0.2%	Percent Owner-Occupied	52.5%
Asian & Pacific Islander	0.5%	Percent Renter-Occupied	47.5%
Other	0.3%		

2005-2009 U.S. Census American Community Survey

Median Family Income	\$30,218	Percent of Persons 25 Years of Age and Older Who Have Completed High School or Equivalent	38.7%
Median Household Income	\$28,555	Percent of Persons 25 Years of Age and Older Who Have Completed a Bachelor's Degree	4.0%
Percent of Persons Below Poverty Level	34.8%		
Percent of Children Under 18 Years of Age Below Poverty Level	44.4%	Percent of Persons 5 Years of Age and Older Who Speak a Language Other Than English at Home	83.7%

Form of Government: City Council - Manager
 Local Newspaper: Firebaugh-Mendota Journal, P.O. Box 336, 681 S. Madera Avenue, Suite 109
 Kerman, CA 93630. Phone: 559-846-6689 FAX: 559-846-8045

City of Fowler

128 S. Fifth Street, Fowler, California 93625

Phone: (559) 834-3113

FAX: (559) 834-0185

Website: www.fowlerciv.org



City Council

The Fowler City Council meets on the first and third Tuesdays of each month at 7:00 p.m.

*COG Policy Board Representative

David Cardenas, Mayor*

834-3113

Email:

davidcardenas@yahoo.com

, Pro Tem

834-3113

Email: jdavis@ci.fowler.ca.us

Jim Simonian

834-3113

Email: jdavis@ci.fowler.ca.us

Rick Darling

834-3113

Rj2ch714@comcast.net

Dan Parra

834-3113

dparra@ci.fowler.ca.us

Planning Commission

The Planning Commission meets on the first Thursday of each month at 6:30 p.m.

Staff

City Manager

David Elias, 834-3113, Ext. 101

Email: delias@ci.fowler.ca.us

Secretary/Planning

Corina Burrola, 834-4832

cburrola@ci.fowler.ca.us

City Clerk

Jeannie Davis

834-3113, Ext. 302

Email: jdavis@ci.fowler.ca.us

Administrative Assistant

Kathy Beasley

559-834-3113 Ext. 107

kbeasley@ci.fowler.ca.us

City Treasurer/Finance Director

Ronney Wong

834-3113, Ext. 104

rwong@ci.fowler.ca.us

Police Chief

Michael Brand

834-3113 Ext. 111

mbrand@ci.fowler.ca.us

Volunteer Fire Chief

Manuel Lopez

(W) 834-3113

mlopez@ci.fowler.ca.us

kbeasley@ci.fowler.ca.us

City Attorney

David J. Wolfe

431-5600

Email:

dwolfe@lozanosmith.com

Public Works Director

David Weisser

834-3113, Ext. 121

Email: dweisser@ci.fowler.ca.us

Planning Consultant

Bruce O'Neal

Land Use Associates,

559-834-3113 Ext. 122

Email: boneal@ci.fowler.ca.us

City Engineer

David Peters 559-299-1544

Peters Engineering Group

Email: dpeters@peters-engineering.com

Chamber of Commerce

President: Craig Mellon

412 E. Merced St.

Fowler, CA 93625-2317

834-3869

FAX- 834-5318

Email:

craigmellon@fowlerchamber.com

Transit

Fowler Transit

859-1227

Southeast Transit

(800) 325-7433

City of Fowler

Fast Facts

In the early 1870's, State Senator Thomas Fowler established a rail spur ten miles south of Fresno for shipping his cattle. In 1878 the first permanent structure was built by John S. Gentry. The City of Fowler was incorporated in 1908.

The City of Fowler is located in the San Joaquin Valley with access to big city living minutes away in the Fresno-Clovis Metropolitan Area. Agriculture is the major industry. The City is also intent on developing a strong light industrial base in Fowler's Industrial Corridor. U.S. Highway 99 is easily accessible.

January 1, 2011 State of California Department of Finance Information

Population	5,719
Number of Housing Units	1,881
Vacancy Rate	6.49%

April 1, 2010 U.S. Census Information

Population	5,570	Age Distribution	
Number of Housing Units	1,842	% under 5 years	8.0%
Vacancy Rate	6.46%	% under 18 years	29.8%
Average Household Size	3.21	% 21 years and over	65.0%
		% 55 years and over	18.6%
Race/Ethnic Distribution		% 60 years and over	13.8%
White	20.0%	% 65 years and over	10.0%
Hispanic	66.2%	Median Age	31.6
Black	1.6%	Occupied Housing Unit Tenure	
American Indian & Alaskan Native	0.4%	Percent Owner-Occupied	64.0%
Asian & Pacific Islander	10.4%	Percent Renter-Occupied	36.0%
Other	1.4%		

2005-2009 U.S. Census American Community Survey

Median Family Income	\$50,938	Percent of Persons 25 Years of Age and Older Who Have Completed High School or Equivalent	67.6%
Median Household Income	\$49,805	Percent of Persons 25 Years of Age and Older Who Have Completed a Bachelor's Degree	16.7%
Percent of Persons Below Poverty Level	18.8%		
Percent of Children Under 18 Years of Age Below Poverty Level	27.5%	Percent of Persons 5 Years of Age and Older Who Speak a Language Other Than English at Home	46.8%

Form of Government: City Council - Manager
 Local Newspaper: The Fowler Ensign, 740 N. Street, Sanger, CA 93657
 Phone: 559-875-2511 Fax: 559-875-2521

City of Fresno



2600 Fresno Street, Fresno, California 93721
Phone: (559) 621-8000, FAX: (559) 237-4010
Internet Website: www.fresno.gov

City Council

The Fresno City Council meets each Thursday of the month at 8:30 a.m., and on evenings as needed.

*COG Policy Board Representative

Ashley Swearengin, Mayor*
2600 Fresno St., (W) 621-8000
621-7903
FAX- 621-7990
Chief of Staff: Georgeanne White
621-7901
Email: ashley.swearengin@fresno.gov

Blong Xiong - District 1
621-8000 FAX- 268-7896
Chief of Staff: Kyle Loreto
Assistant: Maiyer Vang

Andreas Borgeas, District 2
621-8000 FAX 6217892
Chief of Staff: Shari Jones
Assistant: Omar Parra

Oliver Baines - District 3 - Chair
621-8000 FAX- 621-7893
Chief of Staff: Gregory Barfield
Assistant: Tai Arceneaux

Larry Westerlund - District 4
621-8000 FAX- 621-7848
Chief of Staff: Nicole DeMera
Assistant: Michelle Calandra

Sal Quintero - District 5
621-8000 FAX- 490-5395
Chief of Staff: Luis Chavez
Assistant: Brenda Rapada

Lee Brand – District 6
621-8000 FAX- 621-7892
Chief of Staff: Ginger Barrett
Assistant: Kathy Calvert

Clint Olivier - District 7
621-8000 FAX- 498-2541
Chief of Staff: Claudia Ruiz
Assistant: Ann Oliveira

Planning Commission

The Planning Commission meets the first and third Wednesdays of the month at 5:30 p.m.

Chair: Lee Brand
2600 Fresno St., 621-8277

Airport

Fresno Yosemite International Airport, Director of Aviation
4995 E. Clinton Way, 93727
Russ Widmar, 621-4500
FAX- 251-4825

Staff

City Manager
Mark Scott, 621-7770
Fax: 621-7776

Assistant City Manager
Bruce Rudd – 621-7770

Executive Assistant
Belinda Haener, 621-7775
Fax: 621-7776

City Clerk
Becky Klisch, 621-7650
FAX- 488-1005

City Attorney
Jim Sanchez, 621-7500
FAX- 488-1084

Controller/Finance
Joe Gray, 621-7006
FAX- 488-4636

Convention Center General Manager - SMG
Bill Overfelt, 445-8150

Downtown and Community Revitalization Dept.
Craig Scharton,
621-8350-FAX- 488-1078

Fire Chief
Joel Aranez, 621-4000
FAX- 498-4261

Interim Director
Parks/Recreation/Community Services
Bruce Rudd, 621-2900
FAX- 498-1588

Personnel Services Director
Terry Bond, 621-6950
FAX- 498-4775

Planning & Development

Mark Scott, Director
621-8001
Fax – 498-1012

Keith Bergthold, Assistant Director
621-8003
FAX- 498-1012

Assistant, Planning
Trai Her – 621-8003

Police Chief
Jerry Dyer, 621-2000
FAX- 498-5168

Public Utilities Director
Patrick Wiemiller 621-8600
FAX- 498-1304

Director of Public Works
Patrick Wiemiller
621-8663
FAX- 488-1045

Assistant Director of Public Works
Transportation Affairs
Scott Mozier - 621-8811
FAX- 488-1045

Communications Department
Michael Lukens, 621-7777
FAX- 621-7990

Commissions

Housing Authority
Chair: Morris Kyle Jr. (County)
Chair: Rueben Scott (City)

Housing & Community Development
Chair: Rogenia Cox – 559-621-8300
Staff: Erica Castaneda, 559-621-8300

Civil Service Board
Dan Ramirez, Chairperson

Parks
Chair: Merv Carter
Contact: Craig Agabashian, 621-8005

Chamber of Commerce

Executive Director: Al Smith
2331 Fresno St, Fresno, CA 93721
Phone- 495-4800, FAX-495-4811
asmith@fresnochamber.com

Transit

Fresno Area Express
2223 G Street, Fresno, CA 93706
Administration - 621-1393, FAX- 488-1065
Public Information - 621-1122

Director of Transportation
Ken Hamm, 621-1440

Transit Planning Manager
John Downs, 621-1502

Program Manager
Jeff Long, 621-1436

City of Fresno

Fast Facts

"City of Diversity"

Fresno was incorporated in 1885. Originally a water stop for the Southern Pacific Railroad, Fresno soon became the Agri-Business Capital of the San Joaquin Valley. Fresno is also the County seat of Fresno County. Fresno was blessed with vast water reserves and flat irrigatable land perfect for agriculture, especially grapes and cotton.

January 1, 2011 State of California Department of Finance Information

Population	500,121
Number of Housing Units	172,171
Vacancy Rate	7.55%

April 1, 2010 U.S. Census Information

Population	494,665	Age Distribution	
Number of Housing Units	171,288	% under 5 years	8.9%
Vacancy Rate	7.55%	% under 18 years	30.1%
Average Household Size	3.07	% 21 years and over	64.3%
		% 55 years and over	18.3%
Race/Ethnic Distribution		% 60 years and over	13.3%
White	30.0%	% 65 years and over	9.3%
Hispanic	46.9%	Median Age	29.3
Black	7.7%	Occupied Housing Unit Tenure	
American Indian & Alaskan Native	0.6%	Percent Owner-Occupied	49.1%
Asian & Pacific Islander	12.3%	Percent Renter-Occupied	50.9%
Other	2.4%		

2005-2009 U.S. Census American Community Survey

Median Family Income	\$48,257	Percent of Persons 25 Years of Age and Older Who Have Completed High School or Equivalent	74.4%
Median Household Income	\$43,036	Percent of Persons 25 Years of Age and Older Who Have Completed a Bachelor's Degree	20.3%
Percent of Persons Below Poverty Level	23.0%	Percent of Persons 5 Years of Age and Older Who Speak a Language Other Than English at Home	41.0%
Percent of Children Under 18 Years of Age Below Poverty Level	32.5%		

Form of Government: Strong Mayor - Council - Manager - Charter City
 Local Newspaper: The Fresno Bee, 1626 E Street, Fresno, California 93786. Phone: 441-6111

[Intentionally blank]

City of Huron

P.O. Box 339, Huron, California 93234
Phone: (559) 945-2241
FAX: (559) 945-2609
Website: www.cityofhuron.com



City Council

The Huron City Council meets on the first and third Wednesday of each month at 6:00 p.m.

*COG Policy Board Representative

Sylvia Chavez, Mayor*
559-945-2241 Ext. 13
admasst@cityofhuron.com

Hilda R. Plasencia, Pro Tem
945-2241, Ex. 13
admasst@cityofhuron.com

Mike Morales, 945-2241 Ext. 13
admasst@cityofhuron.com

Louis C. Rodriguez, 945-2241, Ex. 13
admasst@cityofhuron.com

Robert C. Pimentel, 945-2241, Ex. 13
admasst@cityofhuron.com

Staff

City Manager
Gerald W. Forde, 945-2241, Ex. 11
Email: gforde415@yahoo.com

Administrative Assistant/City Clerk
Juanita M. Veliz, 945-2241, Ex. 13
Email: admasst@cityofhuron.com

City Attorney
Neal Costanzo
Costanzo & Assoc.
575 E. Locust, #115, Fresno, CA 93720
559-261-0163

Interim Finance Director
Jack Castro 945-3020, Ext. 19
findir@cityofhuron.com

Police Chief
Lt. Chad McMullen
945-2348

Fax: 945-6411
36389 S. Lassen Ave, Huron
Chad.mcmullen@fcle.org

City Engineer
Oscar M. Ramirez, P. E.
Tri-City Engineering
4630 W. Jennifer Ave. #101, Fresno, CA 93722
559-447-9075
Fax: 559-447-9074

Coalinga-Huron Recreation and Park District
Bd. President – Scott Yeager
General Mgr. – vacant
Wendy Luna, Representative
935-0727

Public Works Director
945-2241

Community Development Director
945-2241, Ext. 11

Fire Department
Mark Denham, Fire Chief
P. O. Box 1799
Huron, CA 93234
559-945-9604

Planning Commission

The Planning Commission meets on the second Wednesday of each month at 5:00 p.m.

Chair: John C. Vinton
P.O. Box 339, (W) 945-2241
Huron, CA 93234

Chamber of Commerce

For all questions concerning the City of Huron and the Chamber, please contact Gerald Forde – 559-945-2241

Transit

Huron Transit
(800) 325-7433

City of Huron

Fast Facts

The City of Huron was founded in 1877 and incorporated in 1951. Huron lies in the San Joaquin Valley's vast west-side region. Huron is nine miles east of Interstate 5 (I-5) and three miles south of Highway 198. Lassen Avenue (Highway 269) runs north and south through the city providing easy access for local produce to major markets. The local economy is primarily based in agricultural and ag-related industry. Fresno, the County seat, is sixty miles north of Huron, and San Francisco and Los Angeles are within a three hour drive. Huron has been designated an Enterprise Zone Community.

January 1, 2011 State of California Department of Finance Information

Population	6,790
Number of Housing Units	1,601
Vacancy Rate	4.37%

April 1, 2010 U.S. Census Information

Population	6,754	Age Distribution	
Number of Housing Units	1,602	% under 5 years	11.5%
Vacancy Rate	4.37%	% under 18 years	37.1%
Average Household Size	4.41	% 21 years and over	57.0%
		% 55 years and over	10.7%
Race/Ethnic Distribution		% 60 years and over	7.3%
White	1.5%	% 65 years and over	4.9%
Hispanic	96.6%	Median Age	24.7
Black	0.5%	Occupied Housing Unit Tenure	
American Indian & Alaskan Native	0.1%	Percent Owner-Occupied	32.2%
Asian & Pacific Islander	0.6%	Percent Renter-Occupied	67.8%
Other	0.7%		

2005-2009 U.S. Census American Community Survey

Median Family Income	\$17,726	Percent of Persons 25 Years of Age and Older Who Have Completed High School or Equivalent	26.0%
Median Household Income	\$18,643	Percent of Persons 25 Years of Age and Older Who Have Completed a Bachelor's Degree	0.0%
Percent of Persons Below Poverty Level	61.5%		
Percent of Children Under 18 Years of Age Below Poverty Level	76.2%	Percent of Persons 5 Years of Age and Older Who Speak a Language Other Than English at Home	96.6%

Form of Government: City Council - Manager
 Local Newspaper: Coalinga Recorder, 192 E. Elm Ave., #103, Coalinga, California 93210
 Phone 935-2906 FAX 935-5257

City of Kerman



850 S. Madera, Kerman, CA 93630
Phone: (559) 846-9384
FAX: (559) 846-6199
Website: www.cityofkerman.net

City Council

The Kerman City Council meets the first and third Wednesdays of each month at 6:30 p.m.
15101 W. Kearney Plaza, Kerman

*COG Policy Board Representative

Gary Yep, Mayor*
846-1239
mreyes@cityofkerman.org

Kanwaldeep S. (Raj) Dhaliwal
217-4974
mreyes@cityofkerman.org

Jack Sidhu
349-0840
mreyes@cityofkerman.org

Richard Stockwell
824-8829
mreyes@cityofkerman.org

Douglas Wilcox
846-9380
mreyes@cityofkerman.org

Planning Commission

The Planning Commission meets on the fourth Monday of each month at 6:30 p.m.

Chair: Robert Epperson
850 S. Madera Ave.
(W) 246-6569

Planning Secretary
Olivia Pimentel 846-9386
opimentel@cityofkerman.org

Staff

City Manager
Ron Manfredi, 846-9387
rmanfredi@cityofkerman.org

City Clerk.
Marci Reyes, 846-9380
mreyes@cityofkerman.org

City Attorney
Mark Blum, 846-9356

Finance Director/City Treasurer
Tim Przybyla, 846-9382

Director of Planning and
Development
Luis Patlan, 846-9389

Police Chief
Joe Blohm
846-6633
Fax- 846-9435

Engineering Consultant
Gary Horn, P.E.
2985 N. Burl Ave. #101
Fresno, CA 93722
244-3123 Fax- 244-3120

Community Services Director
Phillip Gallegos, 846-9328

Public Works Director
Ken Moore
846-9388
Fax: 846-7488

Fire Chief/North Central Fire
Protection District
Joel Aranaz
15850 W. Kearney
Kerman, CA 93630
275-5531 (Fresno)

Community Services Recreation
846-9328

Kerman Redevelopment Agency

The City Council sits as the Redevelopment Agency. The agency meets on the third Wednesday of each month at 6:30 p.m.

846-9380 (City Clerk's Office)

Chamber of Commerce

President: Francisco Ortiz y
Davis
452 S. 2nd St.
Chamber – 846-6343

Transit

Kerman Transit
846-7914

City of Kerman

Fast Facts

Kerman is located just east of Fresno in the heart of California's San Joaquin Valley. It is predominantly an agriculturally based economy, but is promoting business growth through the expansion of industrial development and through partnerships with Fresno County, the I-5 Business Development Corridor, the Economic Development Corporation *servicing* Fresno County and the Regional Jobs Initiative (RJI).

January 1, 2011 State of California Department of Finance Information

Population	13,751
Number of Housing Units	3,944
Vacancy Rate	5.53%

April 1, 2010 U.S. Census Information

Population	13,544	Age Distribution	
Number of Housing Units	3,908	% under 5 years	10.3%
Vacancy Rate	5.53%	% under 18 years	34.3%
Average Household Size	3.67	% 21 years and over	60.7%
		% 55 years and over	15.4%
Race/Ethnic Distribution		% 60 years and over	10.8%
White	18.2%	% 65 years and over	7.2%
Hispanic	71.7%	Median Age	28.2
Black	0.3%	Occupied Housing Unit Tenure	
American Indian & Alaskan Native	0.4%	Percent Owner-Occupied	58.6%
Asian & Pacific Islander	7.9%	Percent Renter-Occupied	41.4%
Other	1.4%		

2005-2009 U.S. Census American Community Survey

Median Family Income	\$52,592	Percent of Persons 25 Years of Age and Older Who Have Completed High School or Equivalent	24.6%
Median Household Income	\$48,502	Percent of Persons 25 Years of Age and Older Who Have Completed a Bachelor's Degree	10.3%
Percent of Persons Below Poverty Level	20.0%		
Percent of Children Under 18 Years of Age Below Poverty Level	24.6%	Percent of Persons 5 Years of Age and Older Who Speak a Language Other Than English at Home	62.1%

Form of Government: Elected Mayor—City Manager
 Local Newspaper: Kerman News, P.O. Box 336, Kerman, California 93630
 Phone: 559-846-6689 FAX: 559-846-8045

City of Kingsburg

1401 Draper Street, Kingsburg, California 93631
Phone: (559) 897-5821
FAX: (559) 897-5568
Internet Website/Email: www.cityofkingsburg.ca.gov



City Council

The Kingsburg City Council meets on the first and third Wednesdays of each month at 7:00 p.m.

*COG Policy Board Representative

Bruce Blayney, Mayor*
897-5821
bblayney@kingsburgins.com

David Karstetter, Pro Tem
897-5821
sbauch@cityofkingsburg-ca.gov

Chet Reilly, 897-5821
creilly@yahoo.com

Leland Bergstrom, 897-5821
sbauch@cityofkingsburg-ca.gov

Michelle Roman, 897-5821
sbauch@cityofkingsburg-ca.gov

Planning Commission

The Planning Commission meets on the second Thursday of each month at 7:30 p.m.

Merton Parlier, Chair
1401 Draper St., (H) 897-5302

Staff

City Manager
Don Pauley, 897-5821
Email- dfpauley@cityofkingsburg-ca.gov

City Clerk
Sue Bauch, 897-5821
Email: sbauch@cityofkingsburg-ca.gov

City Attorney
Michael Noland, 584-3337

Assistant City Manager/City Treasurer/Finance Director
Don Jensen, 897-5821
Email: djensen@cityofkingsburg-ca.gov

Police Chief
Jeff Dunn, 897-2931

Fire Chief
Gary Rocha
1460 Marion St. P. O. Box 2
Kingsburg, CA 93631, (W) 897-6537

Planning and Development Director
VACANT

City Engineer
Dave Peters, 299-1544

Building Official
Mike Koch, 897-5328

Community Services Coordinator/Senior Coordinator
Chair: Ashlee Winslow, 897-5328
Email: awinslow@cityofkingsburg-ca.gov

Human Resources
Kathy Pickrell, 897-5328
Email: kpickrell@cityofkingsburg-ca.gov

Public Works Superintendent
Darren Hays, 897-1066

Other Commissions

Community Service Commission
Chair: Ashlee Winslow, 897-5328
Email: awinslow@cityofkingsburg-ca.gov

Chamber of Commerce

Jess Chambers, Director
Mike Hennefent, President
1475 Draper St.
Kingsburg, CA 93631
897-1111

Transit

Kingsburg Transit
897-4311

City of Kingsburg

Fast Facts

The history of Kingsburg is unique with its single ethnic origin. In the early 1870's news of good farming, warm climate and free government land prompted two Swedish natives to settle in a Central Pacific Railroad (now Union Pacific) town called "Kings River Switch". In 1874 the present townsite was drawn up and the name was changed to "Kingsbury". Two years later it became "Kingsburgh" and in 1894 took on its present spelling, "Kingsburg".

Before widespread irrigation, huge wheat farms were the source of Valley wealth and problems. Transient workers with no ties to any community spent their wages in the saloons of whatever town they found themselves. Overindulgence often resulted in gunshot-punctuated exuberance that often spilled into the streets. Kingsburg was no different. By 1886 there were four hotels and several saloons causing consternation to a growing town population. Alarmed community leaders, hoping to incorporate their city, led the fight to clean up the town. The fight was between "drys" who wanted all saloons within the city limits closed, and "wets" who wanted to maintain status quo. On May 11, 1908, "drys" won the day. Kingsburg was incorporated and all but two saloons were closed.

In 1921 ninety-four percent of the population within a three-mile radius of Kingsburg was Swedish-American, giving the community the nickname of "Little Sweden." Today Kingsburg is known as the "Swedish Village". With its Swedish architecture and village atmosphere, Swedish banners fluttering from lampposts and brightly painted Dala Horses, the Swedish heritage of the community is preserved.

January 1, 2011 State of California Department of Finance Information

Population	11,509
Number of Housing Units	4,090
Vacancy Rate	6.06%

April 1, 2010 U.S. Census Information

Population	11,382	Age Distribution	
Number of Housing Units	4,069	% under 5 years	8.0%
Vacancy Rate	6.07%	% under 18 years	29.6%
Average Household Size	2.96	% 21 years and over	66.1%
		% 55 years and over	22.3%
Race/Ethnic Distribution		% 60 years and over	17.1%
White	50.7%	% 65 years and over	12.8%
Hispanic	42.9%	Median Age	33.7
Black	0.3%		
American Indian & Alaskan Native	0.5%	Occupied Housing Unit Tenure	
Asian & Pacific Islander	3.3%	Percent Owner-Occupied	66.4%
Other	2.2%	Percent Renter-Occupied	33.6%

2005-2009 U.S. Census American Community Survey

Median Family Income	\$68,602	Percent of Persons 25 Years of Age and Older Who Have Completed High School or Equivalent	84.1%
Median Household Income	\$59,295	Percent of Persons 25 Years of Age and Older Who Have Completed a Bachelor's Degree	21.5%
Percent of Persons Below Poverty Level	12.9%		
Percent of Children Under 18 Years of Age Below Poverty Level	16.3%	Percent of Persons 5 Years of Age and Older Who Speak a Language Other Than English at Home	24.4%

Form of Government: Elected Mayor—City Manager
 Local Newspaper: Kingsburg Recorder, P.O. Box 9, Hanford, CA 93232
 Phone: 559-582-0471 FAX: 559-582-2341

City of Mendota



643 Quince Street, Mendota, California 93640
Phone: (559) 655-3291
Fresno Phone: 559-266-6456
FAX: (559) 655-4064
Internet/Email: www.ci.mendota.ca.us

City Council

The Mendota City Council meets on the second and fourth Tuesdays of each month at 6:00 p.m.

*COG Policy Board Representative

Robert Silva, Mayor*, 655-3291
rsilva@ci.mendota.ca.us

Joseph Amador, Pro Tem
655-3291
jamador@ci.mendota.ca.us

Joseph Riofrio, 655-3291
jriofrio@ci.mendota.ca.us

John C. Flores, 655-3291
jflores@ci.mendota.ca.us

S. Leo Capuchino
655-3291
lcapuchino@ci.mendota.ca.us

Planning Commission

The Planning Commission meets on the third Tuesday of each month at 6:30 p.m.

Chair: Maria Angel 655-3291

Staff

City Manager
Krystal Chojnacki, 655-3291 Ext. 106
Email: kchojnacki@ci.mendota.ca.us

City Clerk
Karina Zamora 655-3291, Ex. 108
Email: kzamora@ci.mendota.ca.us

City Attorney
Thomas T. Watson
Fike & Watson
401 Clovis Ave. #208
Clovis, CA 93612
559-229-2200
Thomas@watsonattorney.com

Finance Director
Rudy Marquez, 655-3291, Ext. 107

Director of Public Works/Chief Plant Operator
Ron Demmers, 655-3291

Chief of Police
Jerry Galvin
655-9120

Battalion Chief, Mid-Valley Fire Protection District
Vince Bergland
655-4107

City Engineer
David McGlasson
559-449-2700
286 W. Cromwell Ave., Fresno, CA 93711-6162

Building Inspector
Christian Gonzalez
559-655-3291 Ext. 105

City Planner
Jeff O'Neal
206 W. Cromwell Ave., Fresno, CA 93711
559-449-2700

Code Enforcement Officer
Hector Soria
559-655-3291 Ext. 112

Chamber of Commerce

David Castenada, President
P.O. Box 1426
Mendota, CA 93640
655-2439

Transit

Mendota Transit
1-800-325-7433

City of Mendota

Fast Facts

The Southern Pacific Railroad established a storage and switching facility in 1891 at the site of present-day Mendota. However, the city was not incorporated until 1942.

The wildlife refuge to the east of town is complemented by abundant croplands in all the surrounding area. Mendota has traditionally been almost entirely dependent on agriculture for its economic well-being, and has gained recognition as the Cantaloupe Center of the World. The city's goal is to move from dependence on the seasonal crops to a more year-round operation.

Recreational opportunities are abundant, with three city parks in addition to the county and state administered parklands, and an active sports and activity program. Hunting and fishing are excellent in the area.

January 1, 2011 State of California Department of Finance Information

Population	11,081
Number of Housing Units	2,556
Vacancy Rate	5.16%

April 1, 2010 U.S. Census Information

Population	11,014	Age Distribution	
Number of Housing Units	2,556	% under 5 years	11.2%
Vacancy Rate	5.16%	% under 18 years	33.9%
Average Household Size	4.54	% 21 years and over	60.6%
		% 55 years and over	11.0%
Race/Ethnic Distribution		% 60 years and over	7.3%
White	2.2%	% 65 years and over	4.7%
Hispanic	96.6%	Median Age	26.2
Black	0.3%		
American Indian & Alaskan Native	0.2%	Occupied Housing Unit Tenure	
Asian & Pacific Islander	0.4%	Percent Owner-Occupied	43.6%
Other	0.3%	Percent Renter-Occupied	56.4%

2005-2009 U.S. Census American Community Survey

Median Family Income	\$25,414	Percent of Persons 25 Years of Age and Older Who Have Completed High School or Equivalent	26.9%
Median Household Income	\$25,422	Percent of Persons 25 Years of Age and Older Who Have Completed a Bachelor's Degree	0.7%
Percent of Persons Below Poverty Level	37.5%		
Percent of Children Under 18 Years of Age Below Poverty Level	50.5%	Percent of Persons 5 Years of Age and Older Who Speak a Language Other Than English at Home	91.5%

Form of Government: City Council—City Manager
 Local Newspaper: Firebaugh-Mendota Journal, P.O. Box 336, Kerman, California 93630
 Phone: 559-846-6689 FAX: 559-846-8045

City of Orange Cove

633 Sixth Street, Orange Cove, California 93646
Phone: (559) 626-4488
FAX: (559) 626-4653



City Council

The Orange Cove City Council meets the second and fourth Wednesdays of each month at 6:30 p.m.

*COG Policy Board Representative

Gabriel Jimenez, Mayor*
626-4488
gabriel@cityoforangecove.com

Glenda Hill, Pro Tem
655 Adams Avenue
626-4208
Email:
glendahill655@sbcglobal.net

Esther Gonzalez
626-4489
esthergonzalez49@yahoo.com

Frank Martinez
626-4488
Email : fmartax@aol.com

Gilbert Garcia
626-4488
ggarcia93646@yahoo.com

Planning Commission

The Planning Commission meets on the first and third Tuesdays of each month at 7:00 p.m.

Planning Commissioners:

Coy Weldon
Edith Gonzalez
Maria Islas
Bobbie Rheude
Monica Rosas

Staff

City Administrator
Samuel Escobar 626-4488 Ext. 214
samescobar@cityoforangecove.com

City Clerk
June V. Bracamontes
626-4488 Ext. 214
Email: jb@cityoforangecove.com

City Attorney
Hilda Montoy

Finance Director
Manuel Sandoval, 626-4488 Ext. 216
Email:
manuel@cityoforangecove.com

Senior Account Clerk
Phyllis Mendez
626-4488 Ext. 213

Revenue & Utility Clerk/Deputy
City Clerk
Clara Camarena
626-4488, Ext. 211

Building Inspector, Engineer
Ray Hoak
626-4488
ray@cityoforangecove.com

Account Clerk & Building
Permits
Veronica Landeros
559-626-4488 Ext. 212
vl@cityoforangecove.com

Public Works Superintendent
Sylvester Perez
559-626-4488

Other Commissions

Events/Entertainment
Committee
559-626-4488

Chamber of Commerce

490 Park Blvd. Suite A.
Orange Cove, CA 93646
626-5179

Transit

Orange Cove Transit
1-800-325-7433

City of Orange Cove

Fast Facts

Orange Cove was incorporated in 1948. The rural atmosphere is located on popular Highway 63 to Kings Canyon & Sequoia Parks. Pine Flat Lake/Dam is nearby. Situated at the edge of the Sierra Foothills, major crops are citrus, tree fruit & grapes. The Council encourages development: commercial, industrial & residential.

January 1, 2011 State of California Department of Finance Information

Population	9,198
Number of Housing Units	2,247
Vacancy Rate	7.30%

April 1, 2010 U.S. Census Information

Population	9,078	Age Distribution	
Number of Housing Units	2,231	% under 5 years	12.5%
Vacancy Rate	7.31%	% under 18 years	39.9%
Average Household Size	4.39	% 21 years and over	54.4%
		% 55 years and over	12.2%
Race/Ethnic Distribution		% 60 years and over	8.4%
White	5.0%	% 65 years and over	5.7%
Hispanic	92.7%	Median Age	23.6
Black	0.2%	Occupied Housing Unit Tenure	
American Indian & Alaskan Native	0.3%	Percent Owner-Occupied	43.2%
Asian & Pacific Islander	0.9%	Percent Renter-Occupied	56.8%
Other	0.8%		

2005-2009 U.S. Census American Community Survey

Median Family Income	\$24,480	Percent of Persons 25 Years of Age and Older Who Have Completed High School or Equivalent	28.3%
Median Household Income	\$24,983	Percent of Persons 25 Years of Age and Older Who Have Completed a Bachelor's Degree	1.9%
Percent of Persons Below Poverty Level	45.3%		
Percent of Children Under 18 Years of Age Below Poverty Level	53.0%	Percent of Persons 5 Years of Age and Older Who Speak a Language Other Than English at Home	82.8%

Form of Government: General Law Council – City Administrator

Local Newspaper: Orange Cove Times, 1130 G. Street, Reedley, CA 93654
Phone: 638-2244 FAX: 638-5021

City of Parlier

1100 E. Parlier, Parlier, California 93648
Phone: (559) 646-3545
FAX: (559) 646-0416

City Council

The Parlier City Council meets on the first and third Wednesday of each month at 7:00 p.m.

*COG Policy Board Representative

Armando Lopez, Mayor*
646-3545, Ext. 227
exeadcc@parlier.ca.us

Raul Villanueva, Pro Tem
646-3545, Ext. 227
exeadcc@parlier.ca.us

Juan Montano
646-3545, Ext. 227
exeadcc@parlier.ca.us

Diane Maldonado
646-3545, Ext. 227
exeadcc@parlier.ca.us

Yolanda Padilla
646-3545, Ext. 227
exeadcc@parlier.ca.us

Planning Commission

The City Council sits as the Planning Commission

Staff

City Manager/Ex. Director
Lou Martinez, 646-3545, Ext. 232
(Fresno) 888-2941
Email: citymanager@parlier.ca.us

Executive Assistant/Deputy City Clerk
Bertha Augustine, 646-3545, Ext. 227
FAX - 646-0416
Email: exeadcc@parlier.ca.us
bertha@parlier.ca.us

City Clerk
Dorothy Garza, 646-3545 Ext. 227
FAX - 646-0416

Community Development Director/
Public Works Supervisor
Encarnacion "Shun" Patlan,
646-3545, Ext. 228
FAX - 646-0416
Email: commdev@parlier.ca.us

Police Chief
Ishmael Solis,
8770 S. Mendocino St., Suite A
Parlier, CA
646-6600



FAX – 646-6608

City Engineer
Garold Giersch, 233-4091

City Attorney
Dale Bacigalupi
559-431-5600, Fax: 559-646-8821

Dir. of Administrative Services/Finance
Director/Recreation
Patricia Barboza, 646-3547, Ext. 222
FAX – 646-8221
Email: findir@parlier.ca.us

Redevelopment Agency

The City Council sits as the Redevelopment Agency

Chamber of Commerce

President: Israel Lara
P.O. Box 453
Parlier, Ca 93648
646-9625

Transit

Parlier Transit
1-800-325-7433

City of Parlier

Fast Facts

Parlier was incorporated in 1921 and it is the center of the beautiful San Joaquin Valley in Fresno County. It's ideally situated about 200 miles north of Los Angeles and about the same distance south of San Francisco and Sacramento. Parlier is the center and 12 mile radial point for a service community area of over 100,000 people. Parlier is centrally located to serve the vast California market of over 30 million people. Its proximity to major highway networks and rail service makes Parlier an attractive business location. Recreational opportunities in the Sierra Nevada's are within a couple of hours time from Parlier. Parlier has a strong labor force, good infrastructure and a city government committed to making it a city that is supportive of business.

January 1, 2011 State of California Department of Finance Information

Population	14,656
Number of Housing Units	3,512
Vacancy Rate	5.64%

April 1, 2010 U.S. Census Information

Population	14,494	Age Distribution	
Number of Housing Units	3494	% under 5 years	11.7%
Vacancy Rate	5.64%	% under 18 years	37.1%
Average Household Size	4.40	% 21 years and over	57.2%
		% 55 years and over	11.6%
Race/Ethnic Distribution		% 60 years and over	8.2%
White	1.7%	% 65 years and over	5.5%
Hispanic	97.5%	Median Age	25.1
Black	0.1%	Occupied Housing Unit Tenure	
American Indian & Alaskan Native	0.1%	Percent Owner-Occupied	46.2%
Asian & Pacific Islander	0.3%	Percent Renter-Occupied	53.8%
Other	0.3%		

2005-2009 U.S. Census American Community Survey

Median Family Income	\$34,738	Percent of Persons 25 Years of Age and Older Who Have Completed High School or Equivalent	36.4%
Median Household Income	\$33,523	Percent of Persons 25 Years of Age and Older Who Have Completed a Bachelor's Degree	2.4%
Percent of Persons Below Poverty Level	25.5%		
Percent of Children Under 18 Years of Age Below Poverty Level	37.4%	Percent of Persons 5 Years of Age and Older Who Speak a Language Other Than English at Home	80.2%

Form of Government: Council – Manager
 Local Newspaper: Parlier Post, 1130 G. Street, Reedley, California 93654
 Phone: 638-2244 FAX: 638-5021

City of Reedley



1717 9th Street, Reedley, California 93654
Phone: (559) 637-4200
FAX: (559) 638-1093
Internet website: www.reedley.ca.gov

City Council

The Reedley City Council meets on the second and fourth Tuesdays of each month at 7:00 p.m.

*COG Policy Board Representative

Mary Fast, Mayor*
637-4200 Ext. 212
mfast@reedley.ca.gov

Anita Betancourt, Pro Tem
637-4200 Ext. 212
ABetancourt@reedley.com

Pete Chavez
559-637-4200 Ext. 212
PChavez@reedley.ca.gov

Ray Soleno,
637-4200 Ext. 212
RSoleno@reedley.com

Robert (Bob) Beck
637-4200 Ext. 212
rbeck@reedley.ca.gov

Planning Commission

The Planning Commission meets on the first and third Thursdays of each month (on call) at 4:00 p.m.

George Nord, Chair
632-4200 X222

Staff

City Manager
Nicole Zieba
637-4200 X212
FAX – 637-2139
nicole.zieba@reedley.ca.gov

City Clerk/Executive Assistant
Sylvia Plata
637-4200 X212
FAX -637-2139
Sylvia.plata@reedley.ca.gov

City Engineer
Noe Martinez, PE
637-4200 Ext 221
FAX 637-2139
Noe.martinez@reedley.ca.gov

City Attorney
Scott Cross – 431-5600

Public Works Manager
Russ Robertson
637-4200 X214
FAX- 637-2139
Russ.robertson@reedley.ca.gov

Police Chief
Joe Garza, 637-4200 X246
joe.garza@fcl.com

Fire Chief
Jerold Isaak, 637-4230
FAX- 637-2257
Jerry.isaak@reedley.ca.gov

Finance Director/Treasurer
Lori Oken, 637-4200 X220
FAX- 637-2257
lorioken@reedley.ca.gov

Community Services Director
Joel Glick
100 N. East Ave
637-4203
FAX- 637-7253
joel.glick@reedley.ca.gov

City Planner
David Brletic
559-637-4200, Fax 559-637-2139
David.brletic@reedley.ca.gov

Other Commissions

Parks & Recreation Commission
Pam Melville, 637-4203

Airport Commission
Robert Harris, 637-4203

Traffic Safety Commission
Dale Kennedy, 637-4200 Ext. 214

Commission on Aging
Ruben Ramirez, 637-4203

Chamber of Commerce

1633 11th St.
Reedley, CA 93654
559-638-3548

Downtown Association

1713 11th St.
Reedley, CA 93654
638-5484

Transit

Reedley Transit -637-4202

City of Reedley

Fast Facts

“The World’s Fruit Basket”

Incorporated in 1913, is an agricultural community in southeast Fresno County. The beautiful Kings River flows through the community and offers a variety of recreational opportunities for boating, fishing, skiing, rafting and swimming. More fresh fruit produce is grown and shipped from Reedley than from any other area of the world.

Reedley is the proud home of Reedley Community College, and has long been recognized as a progressive community and a very desirable community in which to live and work.

January 1, 2011 State of California Department of Finance Information

Population	24,474
Number of Housing Units	6,906
Vacancy Rate	4.34%

April 1, 2010 U.S. Census Information

Population	24,194	Age Distribution	
Number of Housing Units	6,867	% under 5 years	9.2%
Vacancy Rate	4.34%	% under 18 years	32.5%
Average Household Size	3.65	% 21 years and over	61.9%
		% 55 years and over	17.3%
Race/Ethnic Distribution		% 60 years and over	13.0%
White	19.0%	% 65 years and over	9.5%
Hispanic	76.3%	Median Age	29.1
Black	0.4%		
American Indian & Alaskan Native	0.2%	Occupied Housing Unit Tenure	
Asian & Pacific Islander	3.1%	Percent Owner-Occupied	59.1%
Other	1.0%	Percent Renter-Occupied	40.9%

2005-2009 U.S. Census American Community Survey

Median Family Income	\$45,975	Percent of Persons 25 Years of Age and Older Who Have Completed High School or Equivalent	62.2%
Median Household Income	\$44,100	Percent of Persons 25 Years of Age and Older Who Have Completed a Bachelor’s Degree	15.4%
Percent of Persons Below Poverty Level	23.2%		
Percent of Children Under 18 Years of Age Below Poverty Level	31.8%	Percent of Persons 5 Years of Age and Older Who Speak a Language Other Than English at Home	59.5%

Form of Government: Council – Manager
 Local Newspaper: Reedley Exponent, 1130 G. Street, Reedley, CA 93654
 Phone: 638-2244 FAX: 638-5021

City of San Joaquin



21900 Colorado/P.O. Box 758. San Joaquin, California 93660
Phone: (559) 693-4311
FAX: (559) 693-2193
Internet/Email – www.cityofsanjoaquin.com

City Council

The San Joaquin City Council meets on the fourth Tuesday of each month at 6:00 p.m.

*COG Policy Board Representative

Amarpreet Dhaliwal, Mayor*
693-4311
amarpreet_2000@yahoo.com

Julia Hernandez, Pro Tem
693-4311
juliahernandez08@yahoo.com

Betty R. Vallejo
693-4311
brvallejo@yahoo.com

Abel Lua
693-4311
dianab@cityofsanjoaquin.com

Mary Helen Reynaga
693-4311
dianab@cityofsanjoaquin.com

Planning Commission

The Planning Commission meets on the fourth Tuesday of each month at 6:00 p.m.

The City Council Acts as the Planning Commission

Staff

City Manager
Cruz W Ramos, 693-4311,
Ext. 18
Email: cruzramos@sebastiancorp.net

City Clerk
Diana Brooks, 693-4311, Ext. 16
Email: dianab@cityofsanjoaquin.com

Administrative Assistant
Erika Mejia, 693-4311, Ext. 14
Email: erikam@cityofsanjoaquin.com

Finance Director
Vacant, 693-4311

City Treasurer
Lupe Estrada, 693-4311
lupee@cityofsanjoaquin.com

Department of Public Works/Parks and Recreation
Jeff Viau, 693-4311, Ext. 25
Email: jeffv@cityofsanjoaquin.com

Grants Coordinator
Lupe Estrada, 693-4311, Ext. 20
Email: lupee@cityofsanjoaquin.com

Police
Fresno County Sheriff, 488-3111

City Engineer
Gary Horn P.E.
2985 N. Burl Ave. #101, Fresno, CA 93727
244-3123 FAX-244-3120
ghorn@yhmail.com

City Attorney
Hilda Cantu Montoy
2125 Kern St. #308
Fresno, CA 93721
559-579-1924, FAX 579-1923
hildac@montoylaw.com

Building Inspector/Code Enforcement
Stan Bulla, 693-4311, Ext. 11
Email: stanb@cityofsanjoaquin.com

Chamber of Commerce

President: Stan Bulla
P.O. Box 1001
San Joaquin, CA 93660
693-4311

Transit

San Joaquin Transit
1-800-325-7433

City of San Joaquin

Fast Facts

The city of San Joaquin is located thirty miles west of Fresno and was incorporated on February 14, 1920. Cotton is the major commodity in the area, along with various other crops. San Joaquin will soon be a center link, as Manning Avenue now connects Highway 99 with Interstate 5. This connection will attract business and promote growth in the area.

January 1, 2011 State of California Department of Finance Information

Population	4,025
Number of Housing Units	934
Vacancy Rate	5.57%

April 1, 2010 U.S. Census Information

Population	4,001	Age Distribution	
Number of Housing Units	934	% under 5 years	11.5%
Vacancy Rate	5.57%	% under 18 years	41.3%
Average Household Size	4.54	% 21 years and over	53.9%
		% 55 years and over	11.2%
Race/Ethnic Distribution		% 60 years and over	7.1%
White	2.8%	% 65 years and over	4.4%
Hispanic	95.6%	Median Age	23.6
Black	0.0%	Occupied Housing Unit Tenure	
American Indian & Alaskan Native	0.2%	Percent Owner-Occupied	46.0%
Asian & Pacific Islander	0.9%	Percent Renter-Occupied	54.0%
Other	0.4%		

2005-2009 U.S. Census American Community Survey

Median Family Income	\$26,494	Percent of Persons 25 Years of Age and Older Who Have Completed High School or Equivalent	32.5%
Median Household Income	\$26,640	Percent of Persons 25 Years of Age and Older Who Have Completed a Bachelor's Degree	2.3%
Percent of Persons Below Poverty Level	42.8%		
Percent of Children Under 18 Years of Age Below Poverty Level	54.0%	Percent of Persons 5 Years of Age and Older Who Speak a Language Other Than English at Home	88.3%

Form of Government: City Council – City Manager
 Local Newspaper: Westside Advance
 P.O. Box 336
 Kerman, CA 93630
 Phone: 846-6689 FAX: 846-8045

City of Sanger

1700 Seventh Street, Sanger, California 93657

Phone: (559) 876-6300

FAX: (559) 875-8956

Website: www.ci.sanger.ca.us



City Council

The Sanger City Council meets on the first and third Thursdays of each month at 6:00 p.m.

*COG Policy Board Representative

Joshua Mitchell, Mayor*

876-6300 Ext. 1300

Email: jmitchell@ci.sanger.ca.us

Eli Ontiveros, Pro Tem

876-6300, Ext. 1300

Email: eontiveros@ci.sanger.ca.us

Victor Ruiz

876-6300, Ext. 1300

Email: vruiz@ci.sanger.ca.us

Martin Castellano

876-6300, Ext. 1300

Email: mcastellano@ci.sanger.ca.us

Rodney Nielson

876-6300 Ext. 1300

Email: rneilson@ci.sanger.ca.us

Planning Commission

The Planning Commission meets on the second and fourth Thursdays of each month at 6:00 p.m.

Chair: R.A. "Drew" Esquer

1700 Seventh St.

Development Services Department

(W) 876-6300, Ext. 1540

Staff

City Manager

Brian Haddix, 876-6300

Email: bhaddix@ci.sanger.ca.us

Executive Assistant to the City Mgr.

Becky Hernandez, 876-6300, Ext.

1300

Email: bhernandez@ci.sanger.ca.us

City Clerk

Barbara Mergan, 876-6300 – Ext. 1350

FAX- 876-6319

Email: bmergan@ci.sanger.ca.us

City Attorney

Jeffrey L Kuhn

Lozano Smith, 431-5600

FAX: 261-9366

Finance Director

Deborah Sultan

876-6300 Ext. 1100

Email: dsultan@ci.sanger.ca.us

Economic and Redevelopment
Manager

Dan Spears, 876-6300 Ext. 1520

FAX: 876-6323

Email: dspears@ci.sanger.ca.us

Police Chief

Thomas Klose, 875-8521

Police Dept. FAX- 875-5391

Interim Fire Chief

Greg Tarascou, 875-6588

FAX- 875-6611

Email: gtarascou@ci.sanger.ca.us

Interim Public Works Director

John Mulligan, 876-6300 -1210

Email: jmulligan@ci.sanger.ca.us

Director of Recreation & Community
Services

876-6300 Ext. 1430

FAX: 875-7143

Email: sfitzgerald@ci.sanger.ca.us

Building Inspector

Gary Higginbotham

876-6300 Ext. 1510

Email:

ghigginbotham@ci.sanger.ca.us

City Engineer

Ron Yamabe P.E.

1300 E. Shaw Ave., Suite 176

Fresno, CA 93710

244-3123 FAX- 244-3120

City Planner

876-6300 -1540

Commissions

Parks & Recreation Commission

Meet on the second Monday of each
month at 6 pm

Ed Cuadros, Chair

876-6300 Ext. 1250

Tree and Landscape Commission

Meet on the first Monday of each
month at 6 pm

Chair: Raul Cantu

876-6300 Ext. 1250

Chamber of Commerce

1789 Jensen Ave., Suite B

Sanger, CA 93657

875-4575

FAX- 875-0745

Email: sanger@psnw.com

Transit

Sanger Transit

224-9459

City of Sanger

Fast Facts

Founded over a hundred years ago as a saw mill and shipping point, Sanger was incorporated on May 9, 1911.

With a five member council at large, the city functions as a Council-Manager, General Law form of government. Federal designation as the Nation's Christmas Tree City gives Sanger a sense of pride truly second to none. A nationally recognized award-winning school district is a source of pride to the whole community. Affordable housing in comfortable neighborhoods provides a safe, small town atmosphere in which to raise children.

January 1, 2011 State of California Department of Finance Information

Population	24,484
Number of Housing Units	7,124
Vacancy Rate	6.27%

April 1, 2010 U.S. Census Information

Population	24,270	Age Distribution	
Number of Housing Units	7,104	% under 5 years	9.5%
Vacancy Rate	6.26%	% under 18 years	33.6%
Average Household Size	3.62	% 21 years and over	61.3%
		% 55 years and over	17.1%
Race/Ethnic Distribution		% 60 years and over	12.8%
White	14.6%	% 65 years and over	9.4%
Hispanic	80.5%	Median Age	29.2
Black	0.5%	Occupied Housing Unit Tenure	
American Indian & Alaskan Native	0.4%	Percent Owner-Occupied	58.2%
Asian & Pacific Islander	2.9%	Percent Renter-Occupied	41.8%
Other	1.1%		

2005-2009 U.S. Census American Community Survey

Median Family Income	\$48,046	Percent of Persons 25 Years of Age and Older Who Have Completed High School or Equivalent	60.5%
Median Household Income	\$42,968	Percent of Persons 25 Years of Age and Older Who Have Completed a Bachelor's Degree	8.6%
Percent of Persons Below Poverty Level	22.3%		
Percent of Children Under 18 Years of Age Below Poverty Level	31.0%	Percent of Persons 5 Years of Age and Older Who Speak a Language Other Than English at Home	51.4%

Form of Government: City Council – City Manager
 Local Newspaper: Sanger Herald, 1130 G Street, Reedley, CA 93654
 Phone: 559-638-2244 Fax: 559-638-5021

City of Selma

1710 Tucker Street, Selma, California 93662
Phone: (559) 891-2200
FAX: (559) 896-1068
Internet website: www.cityofselma.com



City Council

The Selma City Council meets on the first and third Mondays of each month at 7:00 p.m.

*COG Policy Board Representative

Kenneth Grey, Mayor*
896-6450
kgreyselma@att.net or
mayor@cityofselma.com

George Rodriguez, Pro Tem
898-0397
grodriguez93662@yahoo.com

Michael Derr
896-0220
mike.derr.b864@statefarm.com

Jim Avalos
341-0370
avalos.jim@gmail.com

Dennis Lujan
896-5832
Lujan222@comcast.net

Planning Commission

The Planning Commission meets on the fourth Monday of each month at 7:00 p.m.

Chair: John Pendegraft
1710 Tucker St.
891-2209

Staff

City Manager

D-B Heusser, 891-2200, Ext. 2250
Email: DBH@cityofselma.com

Acting City Clerk

Reyna Rivera, 891-2200, Ext. 3104
Email: Reynar@cityofselma.com

City Attorney

Neal Costanzo, 261-0163
Email: ncostanzo@costanzolaw.com

Director of Community Development

D-B Heusser, 891-2200 X2250
Email: DBH@cityofselma.com

Director of Finance

Vacant, 891-2205. Ext. 3124
Email:

Director of Public Works

D-B Heusser, 891-2215, Ext. 2250
Email: dbh@cityofselma.com

Director of Recreation & Community Services

Mikal Kirchner, 891-2237, Ext. 2285
FAX: 896-6336
Email: MikalK@cityofselma.com

Acting Fire Chief

Michael Kain 891-2211, Ext.3304
2857 A Street, Selma, CA 93662
Email: michaelk@cityofselma.com

Interim Police Chief

Myron Dyck, 891-2225, Ext. 2280
1935 E. Front Street
Selma, CA 93662
Email: MyronD@cityofselma.com

Engineer

Archie Moosakhanian, 891-2215,
Ext. 3136
Email: ArchieM@cityofselma.com

Other Commissions

Personnel Commission
Vacant
891-2200Ext. 2255

Traffic & Streets Commission
Michael Paul, 891-2215

Recreation & Community Services
Commission
Mikal Kirchner, 891-2237

Pioneer Village Commission
Virginia Hoffman
559-891-2237

Chamber of Commerce

Cindy Howell, Executive Director
1821 Tucker Street
Selma, CA 93662
891-2235 – FAX – 896-7075

Transit

Fresno County EOC

City of Selma

Fast Facts

Selma began with the founding of the Valley View School district in 1880. In 1890 four farmers (J.D. Whitson, E.H. Tucker, George Otis and Monroe Snyder) formed a partnership, developed a townsite and began auctioning lots. The city of Selma was incorporated just three years later. By 1910, although raisins were the major crop, Selma was known as the "Home of the Peach". In 1912, both fruits were honored in a "Peach/Raisin Festival". Selma officially adopted the name "Raisin Capital of the World" in 1963, with 90% of the nation's raisin crop being cultivated within eight miles of the city.

Selma is very proud of its downtown and industrial and commercial developments it has attracted in recent years. These include a U.S. Postal Encoding Center, a new regional movie theater, a variety of new shopping opportunities, and an auto mall. Selma residents and business owners are very proud of their community and strive to keep the small town atmosphere and quality of life they have come to love.

January 1, 2011 State of California Department of Finance Information

Population	23,395
Number of Housing Units	6,824
Vacancy Rate	5.83%

April 1, 2010 U.S. Census Information

Population	23,219	Age Distribution	
Number of Housing Units	6,813	% under 5 years	8.8%
Vacancy Rate	5.83%	% under 18 years	32.1%
Average Household Size	3.59	% 21 years and over	62.6%
		% 55 years and over	18.2%
Race/Ethnic Distribution		% 60 years and over	13.7%
White	15.8%	% 65 years and over	9.9%
Hispanic	77.6%	Median Age	29.5
Black	0.7%		
American Indian & Alaskan Native	0.5%	Occupied Housing Unit Tenure	
Asian & Pacific Islander	4.3%	Percent Owner-Occupied	59.6%
Other	1.2%	Percent Renter-Occupied	40.4%

2005-2009 U.S. Census American Community Survey

Median Family Income	\$47,252	Percent of Persons 25 Years of Age and Older Who Have Completed High School or Equivalent	63.3%
Median Household Income	\$44,227	Percent of Persons 25 Years of Age and Older Who Have Completed a Bachelor's Degree	11.0%
Percent of Persons Below Poverty Level	17.2%		
Percent of Children Under 18 Years of Age Below Poverty Level	24.2%	Percent of Persons 5 Years of Age and Older Who Speak a Language Other Than English at Home	50.9%

Form of Government: City Council – City Manager
 Local Newspaper: Selma Enterprise, P.O. Box 9, Hanford, CA 93232
 Phone: 559-582-0471 FAX: 559-582-2341

County of Fresno



2281 Tulare Street, Fresno, California 93721, Hall of Records, Room 300
Phone: (559) **600-1710**, Toll Free: 1-800-742-1011
FAX: (559) **600-1830**, Email: www.co.fresno.ca.us

Board of Supervisors

The Fresno County Board of Supervisors meets each Tuesday at 9:00 a.m.

*COG Policy Board Representative

Clerk: Bernice Seidel
2281 Tulare St., Room 301
(W) 600-3529, FAX - 600-1608

Phil Larson (District 1)
2281 Tulare St., Room 300
Assistant: Jean Barlow
(W) 600-1000, FAX - 600-1609
Email: jbarlow@co.fresno.ca.us

Susan Anderson (District 2)
2281 Tulare St., Room 300
Assistant: Christine Bourbon
(W) 600-2000, FAX - 600-1609
Email:
Sanderson@co.fresno.ca.us

Henry Perea (District 3)
2281 Tulare St., Room 300
Assistant: Patricia Pinedo
(W) 600-3000, FAX - 455-4704
Email: hperea@co.fresno.ca.us

Judy Case (District 4)*
2281 Tulare St., Room 300
Assistant: Dia Beigi
(W) 600-4000, FAX - 600-1609
Email: dbeigi@co.fresno.ca.us

Deborah Poochigian (District 5)
2281 Tulare St., Room 300
Assistant: Sue Garabedian
(W) 600-5000, FAX - 600-1609
Email: District5@co.fresno.ca.us

Commissions

www.co.fresno.ca.us/0110a/bcc_pwp/
(90 Boards and Commissions)

Staff

County Administrative Officer
John Navarrette, 600-1710

Budget Director
Kathleen Donawa, 600-1223

Agriculture Commissioner,
Carol Hafner, 600-7510
FAX – 455-2415

Assessor/Recorder
Paul Dictos, 600-6879
FAX – 600-3500

Auditor/Controller/Treasurer/Tax
Collector
Vicki Crow, 600-3496
FAX – 600-1444

Behavioral Health, Director
Donna Taylor, 600-9193
4441 E. Kings Canyon, 93702
FAX - 253-9144

Child Support Services, Director
Robert Bash
600-2600, FAX – 600-2799

Social Services, Interim Director
Judy Lemos, 600-2302
FAX – 600-2311

Personnel Services,
Beth Bandy, Deputy Director
600-1800, FAX – 600-1860

Public Health Director/Health
Office
Edward Moreno, MD, MPH
559-600-3200
FAX - 445-3370

Environmental Health, Division
Mgr.
David Pomaville, 600-4065
FAX-445-3379

Internal Services Dept.
Gary Osmondson, CIO, 600-5800
FAX – 600-5927

Coroner/Public Administrator
David Hadden, MD, 600-3400
FAX- 485-1144

County Clerk/Registrar of Voters
Victor Salazar, 600-1730
FAX – 488-3279

County Counsel
Kevin Briggs
600-3479
(County Counsel for Fresno
COG/FCRTA, Zachary
Redmond)
2220 Tulare St., Suite 500
FAX – 600-3480

Superior Courts, Court Executive
Officer
Tamara Beard, 457-2010
FAX-457-2035

County Library
Laurel Prysiazny, Librarian
600-6237, FAX – 600-7268

District Attorney
Elizabeth A. Egan, 600-3232
FAX – 600-4401

Local Agency Formation
Commission
Jeff Witte, Executive Officer,
495-0604
FAX- 495-0655

Probation, Chief Probation
Officer
Linda Penner, 600-1294
FAX- 455-2412

Pubic Defender
Ken Taniguchi, 600-3546
FAX - 262-4104

Sheriff
Margaret Mims, 488-3121
FAX - 262-4032

Veterans Services Officer
Charles Hunnicutt
600-4075
FAX – 600-4080

Public Works & Planning Dept.

Director
Alan Weaver
600-4537 FAX – 600-4548
Public Works & Planning
Administrative Office

Lynn Gorman, AICP
Deputy Director of Planning,
600-4569
FAX - 600-4548

Design Manager
Janet Dailey, 600-4326
FAX – 600-4549

Transportation Planning
600-4532
FAX – 600-4548

Planning Commission

*The Planning Commission meets on the second
and
fourth Thursdays of each month at 8:45 a.m.*

Chair: **Glenn V. Niswander**
Vice Chair: **Sarah Clark Woolf**

County of Fresno

Fast Facts

(Including all cities)

When the Central Pacific Railroad reached Fresno County in 1872 it established the little town of Fresno on the broad treeless, empty plain. Soon farms began to spring up nearby raising mostly grain, hay and livestock. In 1873 Francis T. Eisen planted numerous varieties of grapes a few miles east of the new town planning a winery. They flourished, but the summer of 1877 was extremely hot and his muscats dried on the vine. To salvage them he picked, packed and shipped them to San Francisco as raisins. They were marketed as Peruvian imports but the truth soon leaked out that they were from Fresno. The next year four San Francisco school teachers led by Miss Minne Austin, who had planted a small vineyard a few miles south of town, marketed 30 twenty pound boxes of raisins. These two marketings of Fresno raisins met with such buyer enthusiasm that soon more and more larger plantings were made until over the years Eastern Fresno County became primarily devoted to raisin growing. The annual value of this crop together with returns from other agricultural production within the county makes Fresno County the Leading Agricultural County in the nation.

Unique Features:

- Number 1 agricultural county
- Situated in the geographic center of the state
- Producer of largest variety of crops
- Highest number of county road miles

January 1, 2011 State of California Department of Finance Information

Population	940,220
Number of Housing Units	317,057
Vacancy Rate	8.28%

April 1, 2010 U.S. Census Information

Population	930,450	Age Distribution	
Number of Housing Units	315,531	% under 5 years	8.5%
Vacancy Rate	8.28%	% under 18 years	29.8%
Average Household Size	3.15	% 21 years and over	64.9%
		% 55 years and over	19.6%
Race/Ethnic Distribution		% 60 years and over	14.3%
White	32.7%	% 65 years and over	10.0%
Hispanic	50.3%	Median Age	30.6
Black	4.8%	Occupied Housing Unit Tenure	
American Indian & Alaskan Native	0.6%	Percent Owner-Occupied	54.8%
Asian & Pacific Islander	9.3%	Percent Renter-Occupied	45.2%
Other	2.2%		

2005-2009 U.S. Census American Community Survey

Median Family Income	\$52,071	Percent of Persons 25 Years of Age and Older Who Have Completed High School or Equivalent	72.6%
Median Household Income	\$46,230	Percent of Persons 25 Years of Age and Older Who Have Completed a Bachelor's Degree	19.4%
Percent of Persons Below Poverty Level	20.9%		
Percent of Children Under 18 Years of Age Below Poverty Level	29.8%	Percent of Persons 5 Years of Age and Older Who Speak a Language Other Than English at Home	41.9%

Form of Government: Board of Supervisors, County Administrator
 Local Newspapers: The Fresno Bee, 1626 E Street, Fresno, California 93786. Phone: 441-6111 FAX: 441-6050

Other Member Agency Information:

Member Agency Meetings	51
Month At A Glance Calendar of Member Agencies' Monthly Meetings	52
Fresno County and Its 15 Cities (map)	53
Estimated Distance Between Cities In Fresno County (mileage chart)	54

Member Agency Meetings

City of Clovis
City Council
1st, 2nd & 3rd Monday, 6:00 p.m.

Planning Commission
2nd & 4th Thursday, 7:00 p.m.

City of Coalinga
City Council
1st & 3rd Thursday, 7:00 p.m.

Planning Commission
2nd & 4th Tuesday, 6:30 p.m.

City of Firebaugh
City Council
1st & 3rd Monday, 6:30 p.m.

Planning Commission
2nd Monday, 6 p.m.

City of Fowler
City Council
1st & 3rd Tuesday, 7:00 p.m.

Planning Commission
1st Thursday, 6:30 p.m.

City of Fresno
City Council
Thursday, 8:30 a.m.
Evenings as Needed

Planning Commission
1st & 3rd Wednesday, 5:30 p.m.

City of Huron
City Council
1st & 3rd Wednesday, 6:00 p.m.

Planning Commission
2nd Wednesday, 6:00 p.m.

City of Kerman
City Council
1st & 3rd Wednesday, 6:30 p.m.

Planning Commission
4th Monday, 6:30 p.m.

Redevelopment Agency
3rd Thursday, 7:00 p.m.

City of Kingsburg
City Council
1st & 3rd Wednesday, 7:00 p.m.

Planning Commission
2nd Thursday, 7:30 p.m.

City of Mendota
City Council
2nd & 4th Tuesday, 6:00 p.m.

Planning Commission
3rd Tuesday, 6:30 p.m.

City of Orange Cove
City Council
2nd & 4th Wednesday, 6:30 p.m.

Planning Commission
1st & 3rd Tuesday, 7:00 p.m.

City of Parlier
City Council
1st & 3rd Wednesday, 7:00 p.m.

Planning Commission
Council sits as Planning Comm.

Redevelopment Agency
Council sits as Redev. Agency

City of Reedley
City Council
2nd & 4th Tuesday, 7:00 p.m.

Planning Commission
1st & 3rd Thursday, 4:00 p.m.
(on call)

City of San Joaquin
City Council
4th Tuesday, 6:00 p.m.

Planning Commission
4th Tuesday, 6:00 p.m.

City of Sanger
City Council
1st & 3rd Thursday, 7:00 p.m.

Planning Commission
2nd & 4th Thursday, 7:00 p.m.

City of Selma
City Council
1st & 3rd Monday, 7:00 p.m.

Planning Commission
4th Monday, 7:00 p.m.

County of Fresno
Board of Supervisors
Tuesday, 9:00 a.m.

Planning Commission
2nd & 4th Thursday, 8:30 a.m.

Month At A Glance

Calendar of Member Agencies' Monthly Meetings

Monday	Tuesday	Wednesday	Thursday
First Week			
Clovis City Council Firebaugh City Council Selma City Council	Board of Supervisors Fowler City Council Orange Cove Planning Commission	Fresno Planning Commission Huron City Council Kerman City Council Kingsburg City Council Parlier City Council	Coalinga City Council Fowler Planning Commission Reedley Planning Commission Sanger City Council Fresno City Council
Second Week			
Clovis City Council Firebaugh Planning Commission	Board of Supervisors Coalinga Planning Commission Mendota City Council Reedley City Council	Huron Planning Commission Orange Cove City Council	Clovis Planning Commission Fresno County Planning Commission Sanger Planning Commission Kingsburg Planning Commission Fresno City Council
Third Week			
Clovis City Council Firebaugh City Council Selma City Council	Board of Supervisors Fowler City Council Orange Cove Planning Commission Mendota Planning Commission	Fresno Planning Commission Huron City Council Kerman City Council Kingsburg City Council Parlier City Council	Coalinga City Council Kerman Redevelopment Agency Reedley Planning Commission Sanger City Council Fresno City Council
Fourth Week			
Selma Planning Commission Kerman Planning Commission Five Cities Meeting	Board of Supervisors Coalinga Planning Commission Mendota City Council Reedley City Council San Joaquin Planning Commission San Joaquin City Council	Orange Cove City Council	Fresno COG Policy Board (Last Thurs. of each month) Clovis Planning Commission Fresno County Planning Commission Sanger Planning Commission Fresno City Council

Estimated Distance Between Cities in Fresno County

	Clovis	Coalinga	Firebaugh	Fowler	Fresno	Huron	Kerman	Kingsburg	Mendota	Orange Cove	Parlier	Reedley	San Joaquin	Sanger	Selma
Clovis		83	49	18	12	63	32	34	50	52	28	32	46	16	23
Coalinga	83		54	68	72	18	48	62	47	99	69	73	40	78	73
Firebaugh	49	54		53	43	56	27	61	9	77	62	66	29	58	58
Fowler	18	68	53		10	53	27	13	44	24	10	15	29	12	5
Fresno	12	72	43	10		49	17	20	34	32	18	24	31	15	15
Huron	63	18	56	53	49		36	55	50	79	64	57	31	71	61
Kerman	32	48	27	27	17	36		33	19	51	38	43	17	30	34
Kingsburg	34	62	61	13	20	55	33		54	23	8	12	51	14	7
Mendota	50	47	9	44	34	50	19	54		67	52	57	21	58	49
Orange Cove	52	99	77	24	32	79	51	23	67		16	11	52	27	23
Parlier	28	69	62	10	18	64	38	8	52	16		5	36	11	11
Reedley	32	73	66	15	24	57	43	12	57	11	5		41	12	15
San Joaquin	46	40	29	29	31	31	17	51	21	52	36	41		46	33
Sanger	16	78	58	12	15	71	30	14	58	27	11	12	46		12
Selma	23	73	58	5	15	61	34	7	49	23	11	15	33	12	

Other Listings:

- Caltrans..... 57
- COG Committees..... 58
 - Transportation Policy Board
 - Policy Advisory Committee
 - Transportation Technical Committee
- Other Regional Transportation Boards 59
 - Fresno County Rural Transportation Agency
 - Fresno County Transportation Authority
- Fresno Regional Agencies 60
- Regional Agencies Outside of Fresno County 61
- Communicating with Congress 62
- Legislative Representatives 63
- Reference Summary of Common Abbreviations..... 64

Caltrans



P.O. Box 12616, Fresno, California 93778
1352 W. Olive Avenue, Fresno, CA 93728
Olive Phone: (559) 488-4038
Olive FAX: (559) 488-4195
www.dot.ca.gov/dist6/

Interim District Director

Sharri Bender Ehlert*

District 6

559-488-4057-FAX 559-488-4195

sharri_bender_ehlert@dot.ca.gov

Chief, Central Region Environmental Division

Christine Cox-Kovacevich

559-488-4150-FAX 559-488-4195

christine_cox@dot.ca.gov

Office Chief, Central Region South

Jennifer Taylor

559-445-6455-FAX 559-445-5390

jennifer_taylor@dot.ca.gov

Acting Office Chief, Central Region Environmental North

Kirsten Helton

559-445-6469-FAX 559-445-6182

kirsten_helton@dot.ca.gov

Office Chief, Environmental Mitigation & Comm. Studies

Jamie Lupo

559-445-6109-FAX

jamie_lupo@dot.ca.gov

Sierra Pacific Environmental Analysis

G. William "Trais" Norris, III, Branch Chief

(559) 445-6447-FAX

trais_norris@dot.ca.gov

Acting Deputy District Director, Planning & Local Assistance

Neil Bretz

559-488-4115-FAX 559-488-4195

neil_bretz@dot.ca.gov

Chief, South Transportation Planning

Randy Treece

559-488-4153-FAX 559-445-5875

randy_treece@dot.ca.gov

Chief, Office of Technical Planning

Steven McDonald

559-488-4334-FAX 559-488-4088

steven_j_mcdonald@dot.ca.gov

Chief, North Transportation Planning

Paul-Albert Marquez

559-445-5867-FAX 559-488-4088

paul-albert_marquez@dot.ca.gov

Chief, System Planning

Steve Curti

559-488-4162-FAX 559-488-4088

steve_curti@dot.ca.gov

District Local Assistance Engineer

Local Assistance/Special Studies

James Perrault

559-445-5417-FAX 559-445-5425

james_perrault@dot.ca.gov

Section 5311 Coordinator

Lorena Mendibles

559-445-5421-FAX 559-488-4088

lorena_mendibles@dot.ca.gov

FTIP Coordinator (SHOPP)

Stephen Tracey

559-243-3462 FAX 559-243-3426

stephen_tracey@dot.ca.gov

District 6 Permit Engineer

Joe Espinosa

559-445-6578-FAX 559-445-6510

joe_espinosa@dot.ca.gov

Division of Program/Project Management

Deputy District Director

Mike Rastegar

559-243-3421 FAX 559-243-3426

mike_rastegar@dot.ca.gov

Route 168 Project Manager

Suzie Holdridge

559-243-3432-FAX 559-243-3426

suzie_holdridge@dot.ca.gov

Route 180 West Project Manager

Bob Hull

559-243-3443-FAX 559-243-3426

bob_hull@dot.ca.gov

Route 180 East Project Manager

Neil Bretz

559-243-3465-FAX 559-243-3426

neil_bretz@dot.ca.gov

*Sharri Bender Ehlert is the Interim District Director. Malcolm Dougherty is Acting Director in Headquarters.

COG Committees

Transportation Policy Committee

**NOTE: (A)=Alternate*

Chair: Amarpreet Dhaliwal, San Joaquin

Vice-Chair: David Cardenas, Fowler

City of Clovis
Mayor Jose Flores

City of Coalinga
Mayor Ron Ramsey

City of Firebaugh
Mayor Rod Lake

City of Fowler
Mayor David Cardenas

City of Fresno
Mayor Ashley Swearengin
(A) Councilmember Andreas Borgeas

City of Huron
Mayor Sylvia Chavez

City of Kerman
Mayor Gary Yep

City of Kingsburg
Mayor Bruce Blayney

City of Mendota
Mayor Robert Silva

City of Orange Cove
Mayor Gabriel Jimenez

City of Parlier
Mayor Armando Lopez

City of Reedley
Mayor Mary Fast

City of Sanger
Mayor Joshua Mitchell

City of San Joaquin
Mayor Amarpreet Dhaliwal

City of Selma
Mayor Kenneth Grey

County of Fresno
Supervisor Judy Case

Caltrans (District 06)
Neil Bretz
Acting District Director

Policy Advisory Committee

**NOTE: (A)=Alternate*

Chair: David Elias, Fowler
V. Chair: Don Pauley, Kingsburg

City of Clovis
Rob Woolley, City Manager

City of Coalinga
Darrel Pyle, City Manager

City of Firebaugh
Laura Weyant, City Manager

City of Fowler
David Elias, City Manager

City of Fresno
Bruce Rudd, Asst. City Mgr.
(A) Mark Scott, City Mgr.

City of Huron
Gerald Forde, City Mgr.

City of Kerman
Ron Manfredi, City Manager

City of Kingsburg
Donald Pauley, City Manager

City of Mendota
Krystal Chojnacki, City Manager

City of Orange Cove
Sam Escobar, City Manager

City of Parlier
Lou Martinez, City Manager

City of Reedley
Nicole Zieba, City Manager

City of San Joaquin
Cruz Ramos, City Administrator

City of Sanger
Brian Haddix, City Manager

City of Selma
D.B. Heusser, City Manager

County of Fresno
Lynn Gorman, Deputy Dir., Plng.

Caltrans, District 06
Steve Curti, Transportation Planner

Transportation Technical Committee

**NOTE: (A)=Alternate*

Chair: Noe Martinez, Reedley
V.-Chair: Ken Hamm, FAX

Building Industry Association
Will Washburn
(A) Mike Prandini

California Highway Patrol
Captain Robert Huerta

Caltrans, District 06
Ken Okereke, Trans. Planner

City of Clovis, Planning & Dev. Svs. Dept.
Renee Mathis, Public Works
Dwight Kroll, Director of Planning

City of Clovis, Public Utilities Department
Mike Leonardo, Dir. of Utilities
(A) Steve White, Engineer

City of Coalinga
Darrel Pyle, Interim City Manager

City of Firebaugh
Laura Weyant, City Manager

City of Mendota/Parlier
Kenneth Hutchings, Consultant/Engineer

City of Fresno, Public Works Department
Bruce Rudd, Assistant City Mgr.

City of Fresno, Development Dept.
Scott Mozier, Planning Manager
(A) Darrell Unruh

City of Fresno, Fresno Area Express
Ken Hamm, Dir. of Transportation

City of Fresno, Airport
Russ Widmar

City of Fowler,
David Weisser

City of Kerman
Ken Moore, Dir. of Public Works

City of Kingsburg
Don Pauley, Public Wks. Dept.

City of San Joaquin
Leo Cantu, Director of Public Works

City of Reedley
Nicole Zieba, City Manager

(Continued on next page...)

Other Regional Transportation Boards

Transportation Technical Committee

(...continued from the previous page)

City of Sanger
John Mulligan, Deputy Dir. Of Public Works

City of Selma
Robert Weaver, Public Wks. Dir.
(A) Bruce Webber, Engineer

Fresno County Public Works & Plng.
Lynn Gorman, Director
(A) John Robertson
Alan Weaver, Director
(A) Janet Dailey, Design Engineer
(A) Margo Lerwill, Sr. Staff Analyst

Fresno County/City Chamber of Commerce
Debbie Hunsaker, Trans. Chairman
(A) Al Smith, Executive Dir.

Fresno County EOC/CTSA
Gary Joseph, General Manager

Fresno County Rural Transit Agency
Jeffrey D. Webster, General Manager

Fresno County Transportation Authority
Ron Peterson, Executive Director

Fresno Cycling Club
Nicholas Don Paladino

Fresno-Madera Area Agency on Aging
Jean Robinson, Executive Dir.

High Speed Rail Authority
Ed Graveline

League of Women Voters
John Donaldson, Ph.D

San Joaquin Valley Air Pollution Control District
Tom Jordan, Senior Planner

Sierra Club
Chip Ashley

Fresno Areas Residents for Rail Consolidation
Dennis Manning

Fresno County Rural Transit Agency

Chair: Amarpreet Dhaliwal, San Joaquin
Vice-Chair: David Cardenas, Fowler

City of Coalinga
Mayor Ron Ramsey

City of Firebaugh
Mayor Rod Lake

City of Fowler
Mayor David Cardenas

City of Huron
Mayor Sylvia Chavez

City of Kerman
Mayor Gary Yep

City of Kingsburg
Mayor Bruce Blayney

City of Mendota
Mayor Robert Silva

City of Orange Cove
Mayor Gabriel Jimenez

City of Parlier
Mayor Armando Lopez

City of Reedley
Mayor Mary Fast

City of Sanger
Mayor Joshua Mitchell

City of San Joaquin
Mayor Amarpreet Dhaliwal

City of Selma
Mayor Kenneth Grey

County of Fresno
Supervisor Judy Case
(A) Supervisor Phil Larson

Fresno County Transportation Authority

Chair: Harry Armstrong Councilmember, City of Clovis
Vice Chair: Rural Supervisor Judy Case, Fresno County Board of Supervisors

City of Fresno
Ashley Swearingin, Mayor
Andreas Borgeas Councilmember

County of Fresno
Henry Perea, Supervisor

Rural Cities
West side cities
Amarpreet Dhaliwal, City of San Joaquin

East side cities
Dennis Lujan, City of Selma

Urban Public At Large
Joe Levy

Rural Public At Large
Kirk Hunter

Staff
Ron Peterson, Executive Director
Sherri Martin, Contracts Administrator

Fresno Regional Agencies

Airport Land Use Commission
Clark Thompson, Senior Regional Plnr.
2035 Tulare St. #201
Fresno, CA 93721
559-233-4148 Ext. 203, FAX 233-9645

California Regional Water Quality
Control Board
Loren Harlow, Executive Officer
1665 E. Street
Fresno, CA 93721
445-5116, FAX- 445-5910

Valleyrides
Brenda Veenendaal
Rideshare Coordinator
2035 Tulare St. #201
Fresno, CA 93721
441-RIDE (7433)
FAX- 233-9645
Email: brendal@fresnocog.org

Consolidated Transportation
Service Agency
(Rural/Urban)
Gary Joseph, General Manager
3120 W. Nielsen, Suite 101
Fresno, CA 93706
486-6587, FAX- 485-5379
Toll Free- 800-325-RIDE
Kitchen- 266-3663
Email: eocolsn@fia.net

Fresno County Economic
Development Corporation
Steve Geil, CEO/President
906 N. Street, Suite 120
Fresno, CA 93721
233-2564, FAX- 233-2156

Fresno County Economic
Opportunities Commission
Brian Angus, Executive Director
Fresno Executive Plaza
1920 Mariposa Mall, Third Floor
Fresno, CA 93721
263-1000 FAX- 263-1286

Fresno County Community
Health Department
Brad Maggy, Director
1221 Fulton Mall
P.O. Box 11867
Fresno, CA 93775
445-3200
FAX- 445-3370

Fresno County Rural
Transit Agency
Jeffrey D. Webster
General Manager
2035 Tulare St. #201
Fresno, CA 93721
233-6789
FAX- 233-9645
Email:
jwebster_ruraltransit@fresnocog.org

Five Cities Economic
Development Authority
Contact: Melodee Schwamb, Fresno
EDC, 233-2564
David Cardenas, Chair
Armando Lopez, Vice Chair
906 N St., Ste. 120
Fresno, CA 93721
(W) 233-2564
FAX- 233-2156

Fresno County Transportation
Authority
Ron Peterson, Executive Director
Sherri Martin, Contracts Admin.
2220 Tulare Street, Suite 411
Fresno, CA 93721
453-5023, FAX- 488-3303

Fresno Madera Area Agency On
Aging
Jean Robinson Executive Director
3837 N. Clark #103
Fresno, CA 93726
600-4405
FAX- 453-4776
Email: admin@FMAAA.org

Fresno Metropolitan Flood
Control District
Bob Van Wyk, General
Mgr./Secretary
5469 E. Olive
Fresno, CA 93727
456-3292
FAX- 456-3194

Fresno County Work Force
Investment Board
Blake G. Konczal, Executive Officer
2125 Kern Street, Suite 208
Fresno, CA 93721
559.490.7100, fax 559.490.7199

Local Agency Formation
Commission of Fresno County
Jeff Witte, Exec. Officer
2115 Kern St., Suite 310
Fresno, CA 93721
495-0604
FAX- 495-0655
Email: jewitte@co.fresno.ca.us

San Joaquin Valley Air
Pollution Control District
Seyed Sadredin, Executive Director
1990 E. Gettysburg Avenue
Fresno, CA 93726
230-6000
FAX- 230-6061
Email: seyed.sadredin@valleyair.org

Tom Jordan, Sr. Planner
230-5802 FAX- 230-6064

Regional Agencies Outside of Fresno County

Valley Regional Agencies

Kern Council
of Governments
Ronald Brummett, Executive Director
1401 - 19th Street, Suite 300
Bakersfield, CA 93301
(661) 861-2191
FAX- (661) 324-8215
Email: rbrummett@kerncog.org
Website: www.kerncog.org

Kings County Association
Of Governments
Terri King, Executive Director
339 W. D St., Ste. B
Lemoore, CA 93245
(559) 582-3211, Ext. 2678
FAX- (559) 584-8989
Email: terri.king@co.kings.ca.us

Madera County
Transportation Commission
Patricia Taylor
Executive Director
2001 Howard Rd., Suite 201
Madera, CA. 93637
(559) 675-0721
FAX- (559) 675-9328
Email: Patricia@maderactc.org

Merced County Association
Of Governments
Jesse B. Brown, Executive Director
369 W. 18th St.
Merced, CA 95340
(209) 723-3153
FAX- (209) 723-0322
Email: jesse.brown@mcagov.org
Website: www.mcagov.org

San Joaquin Council
of Governments
Andy Chesley, Executive Director
555 E. Weber Ave., Suite 400
Stockton, CA 95202
(209) 235-0584
FAX- (209) 235-0438
Email: achesley@sjcog.org
Website: www.sjcog.org

Stanislaus Council
of Governments
Vince Harris, Executive Director
1111 I Street
Modesto, CA 95354
(209) 525-4600
FAX- (209) 558-7833
Email: vharris@stancog.org
Website: www.stancog.org

Tulare County Association
of Governments
Ted Smalley, Executive Director
5955 S. Mooney Blvd.
Visalia, CA 93277
(559) 624-7274
FAX- (559) 730-2653
Email: tsmalley@co.tulare.ca.us
Website: www.tularecog.org

Other Regional Agencies

Sacramento Area Council
of Governments
Mike McKeever, Executive Director
1415 L Street
Sacramento, CA 95816
(916)-321-9000
FAX- (916) 321-9551
Email: mmckeever@sacog.org
Website: www.sacog.org

San Diego Association
of Governments
Gary Gallegos Executive Director
401 B Street, Suite 800
San Diego, CA 92101
(619) 699-1900
FAX- (619) 699-1905
Email: gga@sandag.org
Website: www.sandag.org

San Luis Obispo Council
of Governments
Ronald DeCarli, Executive Director
1150 Osos Street, Suite 202
San Luis Obispo, CA 93401
(805) 781-4219
FAX- (805) 781-5703
Email: rdecarli@slocog.org
Website: www.slocog.org

Southern California
Association of Governments
Hasan Ikhata, Executive Director
818 West 7th Street, 12th Floor
Los Angeles, CA 90017
(213) 236-1800
FAX- (213) 236-1825
Email: Webmaster@scag.ca.gov
Website: www.scag.ca.gov

Association of Monterey Bay
Area Governments
John Doughty, Executive Director
445 Reservation Road, Suite G
P.O. Box 809
Marina, CA 93933-0809
(831) 264-5100
FAX- (831) 883-3755
Email: info@ambag.org
Website: www.ambag.org

Metropolitan Transportation
Commission
Steve Heminger, Executive Director
101 8th Street, Metrocenter
Oakland, CA 94607
(510) 464-7700
FAX- (510) 464 -7848
Email: info@mtc.dst.ca.us
Website: www.mtc.dst.ca.us

CALCOG
Bill Higgins, Executive Director
1127 11th Street, Suite 925
Sacramento, CA 95814
(916) 557-1170
FAX- (916) 447-2350
Email: bhiggins@calcog.org
Website: www.calcog.org

National Association of Regional
Councils
Fred Abousleman, Executive Director
1666 Connecticut Ave. NW, Suite 300
Washington, DC 20009
(202) 986-1032
FAX- (202) 986-1038
Email: fred@NARC.org

Communicating with Congress

The letter is the most popular choice of communication with a congressional office. If you decide to write a letter, here is a list of suggestions that will improve the effectiveness of the letter.

Addressing Correspondence:

- **To a Senator...**

The Honorable (First Name, Last Name)
United States Senate
Washington, DC 20510

Dear Senator (Last Name):

- **To a Representative...**

The Honorable (First Name, Last Name)
House of Representatives
Washington, DC 20515

Dear Mr./Mrs./Ms. (Last Name):

Note: When writing to the Chair of a committee or the Speaker of the House, it is proper to address them as:

Dear Mr. Chairman or Madam Chairwoman:
Dear Mr. Speaker

Remember: Address the member of Congress properly, state your purpose, identify the bill, be polite and be specific. Limit your correspondence to one topic and, if possible, limit the length to one page.

Legislative Representatives -

California Governor Jerry Brown

State Capitol
Sacramento, CA 95814
(916) 445-2841
FAX- (916) 558-3160

Lt. Governor Gavin Newsom

State Capitol, Room 1114
Sacramento, CA 95814
(916) 445-8994
FAX- (916) 323-4998

Secretary of State

Debra Bowen
1500 11th Street
Sacramento, CA 95814
(916) 653-6814

State Senate

Tom Berryhill 14th District
4974 E. Clinton Way, Ste. 100
Fresno, CA 93727
(559) 253-7122
FAX- (559) 253-7127
senator.berryhill@senate.ca.gov

State Capitol, Room 3076
Sacramento, CA 95814
(916) 445-9600
FAX- (916) 327-3523

Michael Rubio, 16th District
2550 Mariposa Mall, Suite 2016
Fresno, CA 93721
(559) 264-3070
FAX- (559) 445-6506
senator.rubio@senate.ca.gov

State Capitol, Room 2066
Sacramento, CA 95814
(916) 445-4641
FAX- (916) 327-5989

State Assembly

Linda Halderman, 29th District
6245 N. Fresno St. #106
Fresno, CA 93720
(559) 446-2029
FAX- (559) 446-2028
Assemblymember.halderman@assembly.ca.gov

State Capitol, Room 4009
Sacramento, CA 95814
(916) 319-2029
FAX- (916) 319-2129

David Valadao, 30th District

State Assembly
1489 W. Lacey Blvd.
Hanford, CA 93230
(559) 585-7170
FAX-(559) 585-7175
Assemblymember.valadao@assembly.ca.gov

State Capitol, Room 2174
Sacramento 95814
(916) 319-2030
FAX- (916) 319-2130

Henry T. Perea, 31st District
2550 Mariposa Mall, Room 5031
Fresno, CA 93721
(559) 445-5532
FAX- (559) 445-6006
assemblymember.perea@assembly.ca.gov

State Capitol, Room 4112
Sacramento, CA 95814
(916) 319-2031
FAX- (916) 319-2131

U. S. Senators

Barbara Boxer
2500 Tulare St. #5290
Fresno, CA 93721
(559) 497-5109
FAX- (559) 497-5111
www.boxer.senate.gov

112 Hart Building
Washington, D.C. 20510
(202) 224-3553

Dianne Feinstein
2500 Tulare St. #4290
Fresno, CA 93721
(559) 485-7430
FAX- 485-9689
www.feinstein.senate.gov

331 Hart Building
Washington, D.C. 20510
(202) 224-3841
FAX- (202) 228-3954

U.S. Representatives

Dennis Cardoza, 18th District
2222 M. Street, #305
Merced, CA 95340-3729
(209) 383-4455 (Merced)
(209) 527-1914 (Modesto)
www.cardoza.house.gov

435 Cannon House Office Bldg.
Washington, D.C. 20515
(202) 225-6131
FAX- (202) 225-0819

Jeff Denham, 19th District

1040 E. Herndon Ave. #201
Fresno, CA 93720
(559) 449-2490
FAX- (559) 449-2499
www.denham.house.gov

1605 Longworth Office Bldg.
Washington, D.C. 20515
(202) 225-4540
FAX- (202) 225-3402

Jim Costa, 20th District

855 M St. Suite 940
Fresno, CA 93721
(559) 495-1620
www.costa.house.gov

1004 Longworth House Building
Washington, D.C. 20515
(202) 225-3341
FAX- (202) 225-9308

Devin Nunes, 21st District

264 Clovis Ave., Ste. 206
Clovis, CA 93612
(559) 323-5235
FAX- (559) 323-5528
www.nunes.house.gov

1017 Longworth House Building
Washington, D.C. 20515
(202) 225-2523
FAX- (202) 225-3404

Glossary of Common Acronyms

AASHTO -	American Association of State Highway and Transportation Officials	LOS -	Level of Service
AB -	Assembly Bill	LRC -	Local Review Committee
ADA -	Americans with Disabilities Act of 1990	LRT -	Light (duty) Rail Transit
ADT -	Average Daily Traffic	LTC -	Local Transportation Commission
ALUC -	Airport Land Use Commission	LTF -	Local Transportation Fund
AMTRAK-	National Railroad Passenger Corporation	MOU -	Memorandum of Understanding
APCD -	Air Pollution Control District	MPO -	Metropolitan Planning Organization
ARB -	Air Resources Board (also referred to as CARB, California Air Resources Board)	NHS -	National Highway System
AVA -	Abandoned Vehicle Abatement	NPIAS -	National Plan of Integrated Airport Systems
BAG -	Bicycle Advisory Committee	OWP -	Overall Work Program
BLA -	Bicycle Lane Account	PAC -	Policy Advisory Committee
BTA -	Bicycle Transportation Account	PIP -	Public Involvement Procedures
CAAP -	California Aid to Airports Program	PL Funds-	Federal Planning Funds
CAC -	California Administrative Code	PM-10 -	Particulate matter smaller than 10 microns
CALCOG-	California Association of Councils of Govts.	PSR -	Project Study Report
CALTRANS-	California Department of Transportation	PTIS-	Public Transportation Infrastructure Study
CASP -	California Aviation System Plan	PUC -	Public Utilities Code/Commission
CAA -	Clean Air Act (Federal)	PPP -	Public Participation Plan
CCAA -	California Clean Air Act	RCR -	Route Concept Report
CCASP -	Central California Aviation System Plan	REMOVE-	Remove Motor Vehicle Emissions
CCR -	California Code of Regulations	RFP -	Request for Proposals
CEQA -	California Environmental Quality Act	ROG -	Reactive Organic Gases
CFPG -	California Federal Programming Group	ROP -	Rate of Progress Plan
CIP -	Capital Improvement Program	RSTP -	Regional Surface Transportation Program
CLUP -	Comprehensive Land Use Plan	RTIP -	Regional Transportation Improvement Program
CMAQ -	Congestion Mitigation and Air Quality	RTMF -	Regional Transportation Mitigation Fee
CMP -	Congestion Management Program	RTP -	Regional Transportation Plan
CNG -	Compressed Natural Gas	RTPA -	Regional Transportation Planning Agency
COG -	Council of Governments	SAFETEA-LU -	Safe, Accountable, Flexible, Efficient, Transportation Equity Act: A Legacy For Users
CTC -	California Transportation Commission	SB -	Senate Bill
CTIPS -	California Transportation Improvement Program System	SCS -	Sustainable Communities Strategy
CTSA -	Consolidated Transportation Service Agency	SH -	State Highway
DOT -	Department of Transportation	SHOPP -	State Highway Operation and Protection Plan
EIR -	Environmental Impact Report	SIP -	State Implementation Plan
EIS -	Environmental Impact Statement	SJVAPCD-	San Joaquin Valley Air Pollution Control District
EPA -	Environmental Protection Agency (Federal)	SOV -	Single Occupant Vehicle
EPSP -	Expedited Project Selection Procedures	SR -	State Route
FAA -	Federal Aviation Administration	SRTP -	Short Range Transit Plan
FAX -	Fresno Area Express	SSTAC -	Social Service Transportation Advisory Council
FCMA -	Fresno-Clovis Metropolitan Area	STA -	State Transit Assistance
FCRTA -	Fresno County Rural Transit Agency	STIP -	State Transportation Improvement Program
FCTA -	Fresno County Transportation Authority	STP -	Surface Transportation Program
FHWA -	Federal Highway Administration	TAC -	Technical Advisory Committee
FRA -	Federal Railroad Administration	TCI -	Transit Capital Improvement
FSP -	Freeway Service Patrol	TCM -	Transportation Control Measure
FSTIP -	Federal Statewide Transportation Improvement Program	TDA -	Transportation Development Act
FTA -	Federal Transit Administration	TDM -	Transportation Demand Management
FTIP -	Federal Transportation Improvement Program	TDP -	Transit Development Plan
FY -	Fiscal Year	TEA -	Transportation Enhancement Activities
GIS -	Geographic Information Systems	TEA 21 -	Transportation Equity Act for the 21st Century
GHG-	Green House Gas	TIP -	Transportation Improvement Programs
HMF -	Heavy Maintenance Facility	TMA -	Transportation Management Association
HOV -	High Occupancy Vehicle	TOD-	Transit Oriented Development
HPMS -	Highway Performance Monitoring System	TPA -	Transportation Planning Agency
HSR -	High Speed Rail	TPC -	Transportation Policy Committee
HST -	High Speed Train	TSM -	Transportation Systems Management
IRRS -	Interregional Road System	TTC -	Transportation Technical Committee
ISTEA -	Intermodal Surface Transportation Efficiency Act of 1991	VMT -	Vehicle Miles of Travel
ITIP -	Interregional Transportation Improvement Plan	VOC -	Volatile Organic Compound
JPA -	Joint Powers Agency		
LAFCO -	Local Agency Formation Commission		

