

Fresno County Regional Trails Plan

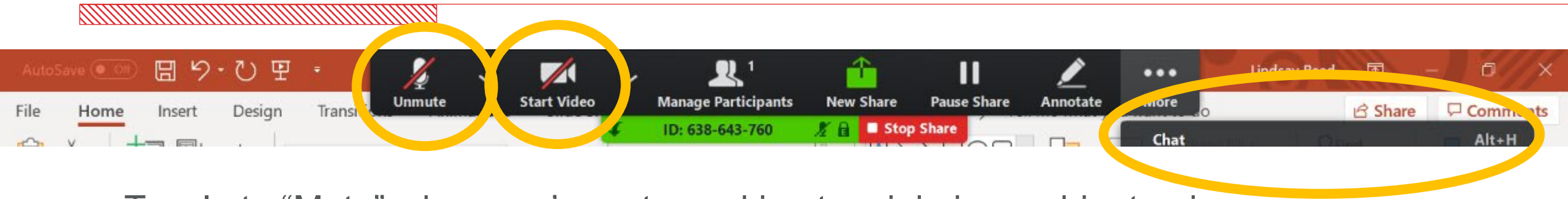
Agency Advisory Group Meeting #2
Thursday, October 8, 2020



Fresno Council of
Governments



Zoom Basics + Prep for Mentimeter



- Toggle to “Mute” when you’re not speaking to minimize ambient noise
- Toggle to “Start video” to display your video
- Open chat window via Alt + H
- Please add your organization to your name by right clicking on your photo, selecting rename, and adding text after your name
- We’ll be using Mentimeter so please have your phone handy or browser open. We’ll share the web address and code later

Agenda



Kristen

- 1 Welcome and Introductions
- 2 Regional Trails Plan Refresher
- 3 What We've Been Working On
- 4 Discussion
- 5 Next Steps



1 WELCOME AND INTRODUCTIONS

FCOG and Fresno County Team



Peggy Arnest
Senior Regional Planner
Fresno County of Governments



Brian Spauhurst
Senior Planner
County of Fresno



Gloria Hensley
Planner
County of Fresno

Consultant Team



Kristen Lohse, ASLA
Senior Urban Designer
Toole Design



Megan Wooley-Ousdahl, AICP
Senior Planner
Toole Design



Hector Guerra
Senior Planner
VRPA Technologies

Advisory Group Member Introductions

Please introduce yourself in this order:

- | | | |
|---------------------|-------------------------|---------------------|
| 1. Mohammad Alimi | 10. Ben Gallegos | 18. Shelby MacNab |
| 2. Chris Bernal | 11. Cristian Gonzalez | 19. Renee Mathis |
| 3. Stan Bulla | 12. Jill Gormley | 20. TJ Miller |
| 4. Jack Castro | 13. Sonia Hall | 21. John Mulligan |
| 5. Tim Chapa | 14. Alexander Henderson | 22. Elizabeth Nunez |
| 6. Jennifer Clark | 15. Rudy Hernandez | 23. Pedro Ramirez |
| 7. Joey Daggett | 16. John Jansons | 24. Rob Terry |
| 8. Jeannie Davis | 17. Mohammad Khorsand | 25. Marissa Trejo |
| 9. Francesca Eidson | 18. Dwight Kroll | 26. Steve White |

Did we miss anyone?



2 REGIONAL TRAILS PLAN REFRESHER

Plan Purpose



Kristen

- Address gaps in Regional Active Transportation Plan (ATP) – looking at county lands and county islands
- Collaborate with partners across the county to identify new recreational trail connections



Plan Focus

Focus: Recreational trails

- Unpaved trails
- Paved shared-use paths
(Class I trails)

County-owned land areas
outside cities/towns and
county islands



Kristen

Plan Goals



Kristen



Livability	Connectivity	Mobility	Collaboration	Economic Development
Enhance livability by integrating trail systems into community activity.	Develop trail connections to important destinations in urban, rural, and open space areas.	Create active transportation options for recreational and utilitarian trips.	Collaborate with local jurisdictions, organizations, and community to plan, coordinate, implement, maintain a countywide trail system.	Leverage economic development opportunities for local businesses and tourism by increasing the use of trails.

Work Plan & Schedule



Kristen

TASKS	2019		2020			2021
	Fall	Winter	Spring	Summer	Fall	Spring
Project Kick-off						
Conduct Community Outreach	Ongoing	* * *				
Review Existing Conditions						
Draft Vision and Goals						
Develop Proposed Trail Connections					We are here	
Develop Funding and Implementation Plan						
Draft Plan						

* Advisory Group meetings



3 WHAT WE'VE BEEN WORKING ON

Field Inventory

- Visited 20+ trails in Fresno County to assess characteristics and develop ad classification system

Example

	Avocado Lake
Length	2.4 miles
Corridor Area	Rural
Right of Way	Various (State/Public)
Separated?	In Roadway
Track	Multi Users
Surface Type	Paved
Material	Asphalt
Terrain	Flat
Width	8-20 feet
Condition	Smooth, Firm
Vertical Clearance	8-12 feet
User Types	Pedestrian, Bicycle, Motor Vehicle



Kristen

Trail Classification System



Kristen

Sidepath

- Paved
- ADA accessible
- Along roadways
- Recreation and active transportation

Shared-Use Path

- Paved
- ADA accessible
- Off-street alignment
- Recreation and active transportation

Off-Road / Multi-Use

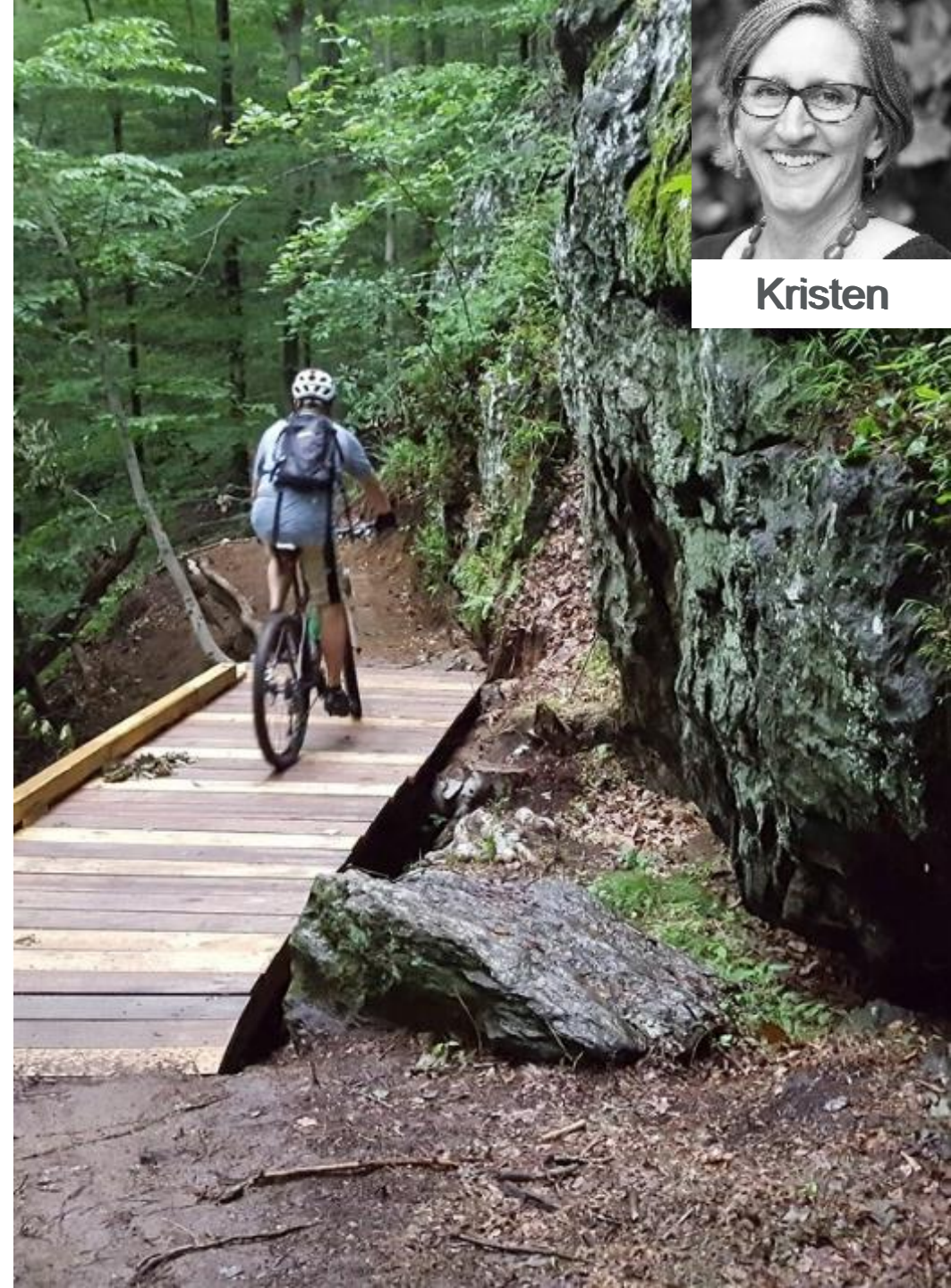
- Unpaved
- Generally wide, level, and defined
- Some amenities
- Multi-use recreation

Off-Road / Single-Use

- Unpaved
- Can be narrow, rough, or steep
- Few amenities
- Single-use recreation

Recommendations

- ~375 miles of new proposed trails:
 - Unpaved (250 miles)
 - Paved (175 miles)
 - New trails + gap closures
 - Potential Mountain Bike Park
 - Both visionary and practical
 - Funding TBD



Background on Recommendations



Kristen

- Recommendations based on:
 - Plan's goals
 - Community input - *Received 200+ comments on first webmap*
 - Data from field visits
 - Existing active transportation plans for the County, cities, and towns
 - Best practices in trail planning

Meeting Plan Goals



Kristen

Increase Recreational Access

Areas not currently well-served

Serve many community members

Connect to recreational opportunities

Prioritize Equity

Safe and comfortable

Serve users at all levels and meet ADA standards

Improve access for vulnerable populations

Enhance Regional Connectivity

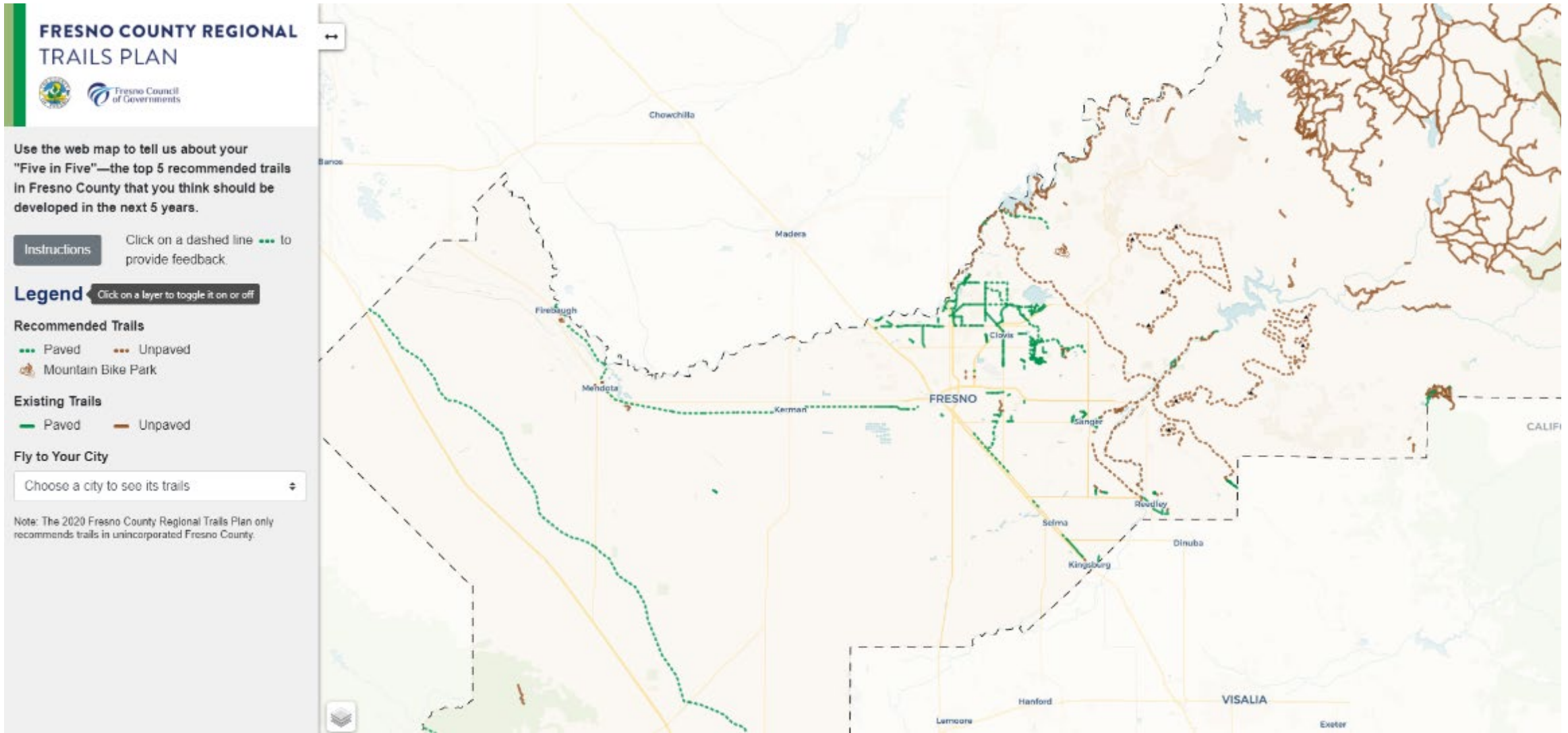
Connect islands

Focus on County-owned land

Your input needed – Five in Five



Megan



Your help needed



Megan

FRESNO COUNTY REGIONAL TRAILS PLAN

Use the web map to tell us about your "Five in Five"—the top 5 recommended trails in Fresno County that you think should be developed in the next 5 years.

Instructions Click on a dashed line --- to provide feedback.

Legend Click on a layer to toggle it on or off

Recommended Trails

- Paved --- Unpaved
- Mountain Bike Park


Existing Trails

- Paved --- Unpaved

Fly to Your City

Choose a city to see its trails

Note: The 2020 Fresno County Regional Trails Plan only recommends trails in unincorporated Fresno County.



Please share the webmap link with 3 friends, neighbors, colleagues



4 DISCUSSION

Mentimeter Basics



Megan

- When prompted, log onto **www.menti.com** via your phone or computer
- Input the code: **38 08 60 1**
- Questions appear automatically; type in your response(s) and hit submit



Please enter the code

Submit

The code is found on the screen in front of you

Go to www.menti.com
and use the code 38 08 60 1



Kristen

Test question:

What's your favorite fall
activity?

Go to www.menti.com
and use the code 38 08 60 1



Megan

What makes a trail
important to the
countywide trail system?

Go to www.menti.com
and use the code **38 08 60 1**



Kristen



Livability	Connectivity	Mobility	Collaboration	Economic Development
Enhance livability by integrating trail systems into community activity.	Develop trail connections to important destinations in urban, rural, and open space areas.	Create active transportation options for recreational and utilitarian trips.	Collaborate with local jurisdictions, organizations, and community to plan, coordinate, implement, maintain a countywide trail system.	Leverage economic development opportunities for local businesses and tourism by increasing the use of trails.

Go to www.menti.com
and use the code 38 08 60 1



Megan

What is the best path
you see toward
implementation of the
recommended trails?

Go to www.menti.com
and use the code 38 08 60 1



Megan

Do you see opportunities for
your organization or agency
to partner on implementing or
funding a recommended trail?

Via Zoom video or chat



Megan

If you could include one thing in the Plan, what would it be, and why?

If you could include one thing in the Plan, what would it be, and why?



Megan

Please share your thoughts in this order:

- | | | |
|---------------------|-------------------------|---------------------|
| 1. Mohammad Alimi | 10. Ben Gallegos | 18. Shelby MacNab |
| 2. Chris Bernal | 11. Cristian Gonzalez | 19. Renee Mathis |
| 3. Stan Bulla | 12. Jill Gormley | 20. TJ Miller |
| 4. Jack Castro | 13. Sonia Hall | 21. John Mulligan |
| 5. Tim Chapa | 14. Alexander Henderson | 22. Elizabeth Nunez |
| 6. Jennifer Clark | 15. Rudy Hernandez | 23. Pedro Ramirez |
| 7. Joey Daggett | 16. John Jansons | 24. Rob Terry |
| 8. Jeannie Davis | 17. Mohammad Khorsand | 25. Marissa Trejo |
| 9. Francesca Eidson | 18. Dwight Kroll | 26. Steve White |



5 NEXT STEPS



Next Steps



Kristen

- **Homework**
Share the map with three friends, colleagues, or neighbors!
- fresnocog.org/project/active-transportation/
- Map will be open until late November
- Draft Plan in spring

Go to www.menti.com
and use the code 38 08 60 1



Megan



Kristen

Final questions or
thoughts?



THANK YOU!