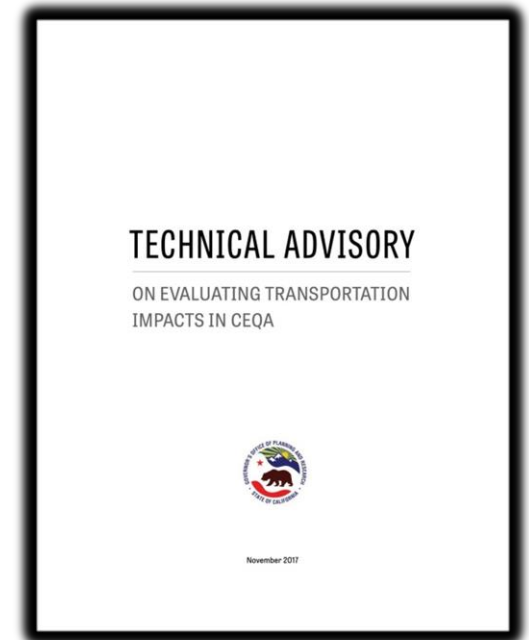


SB 743: A Transportation Engineer's Perspective

Erik Ruehr, VRPA Technologies, Inc.

*Chair, California SB 743 Task Force
Institute of Transportation Engineers –
Western District*

*Fresno COG SB 743 Workshop
January 8, 2019*



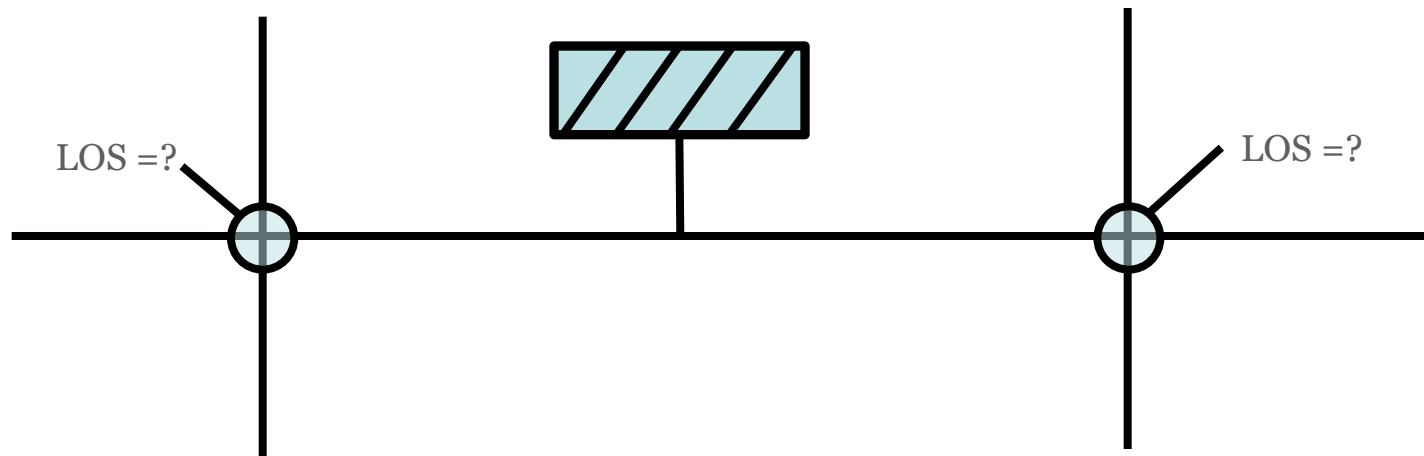
**SB 743:
A Transportation Engineer's Perspective**

Outline

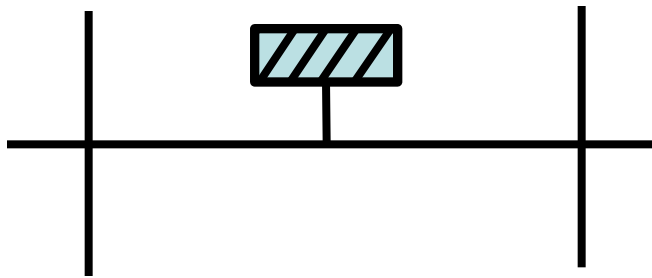
- ❖ Comments on Statewide Guidelines
 - Overall Comments
 - Opportunities
 - Challenges
- ❖ San Diego Regional SB 743 Guidelines
- ❖ Questions / Discussion



WHAT WE DO NOW



What We Will Do Under SB 743 (Starting July 1, 2020)



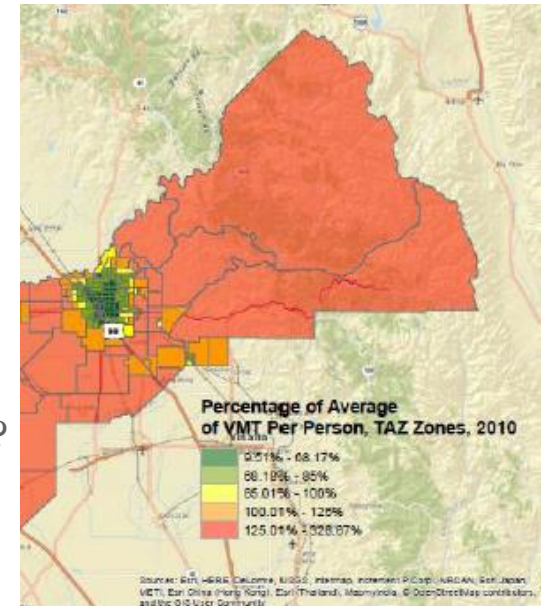
$$\begin{array}{ccccc} \text{VMT} = \text{Vehicle} & & & & \text{Number of Trips} \\ \text{Miles} & & & & \text{Length of Trip} \\ \text{Traveled} & = & & \times & \\ & & & & \end{array}$$

Compare
To

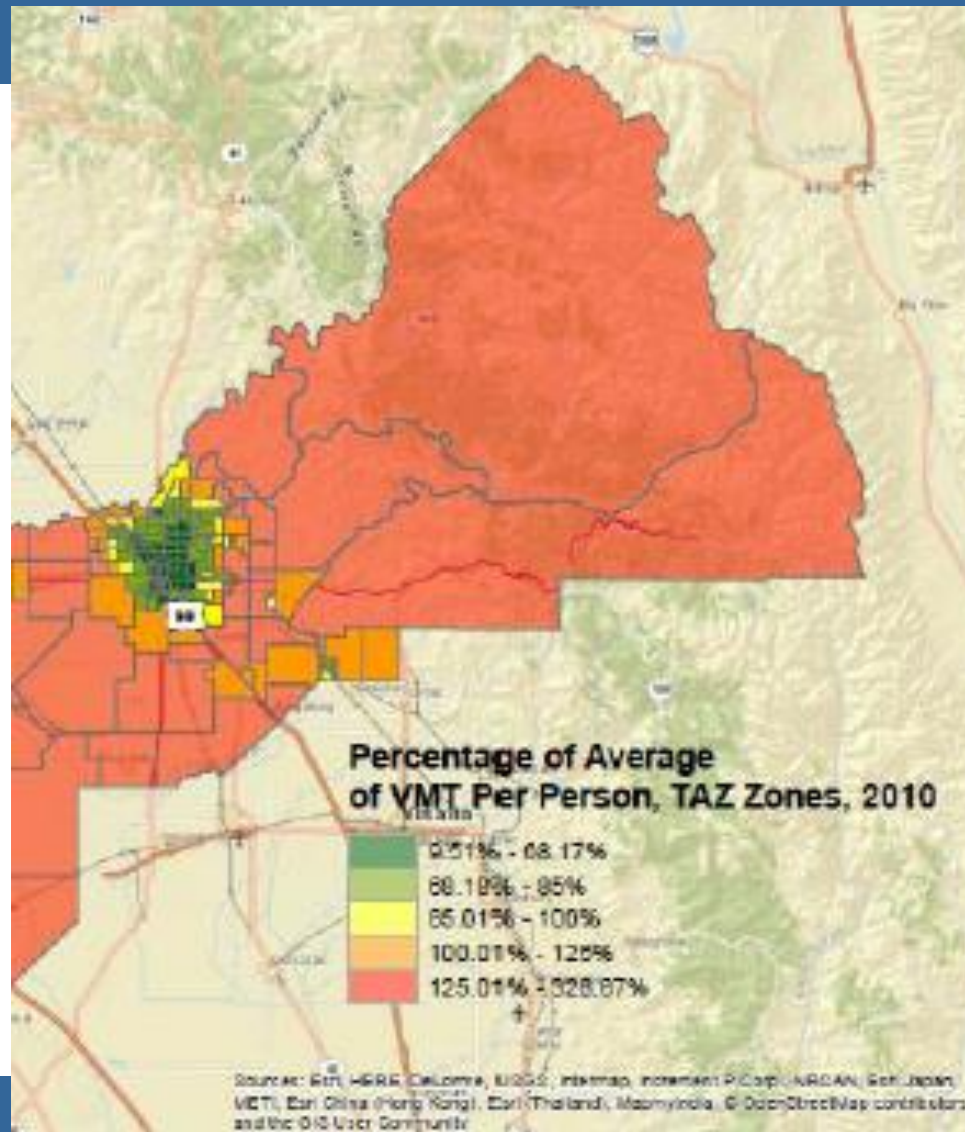
Fresno
Region

Regional or City
VMT/Employee = ?

VMT/Capita = ?

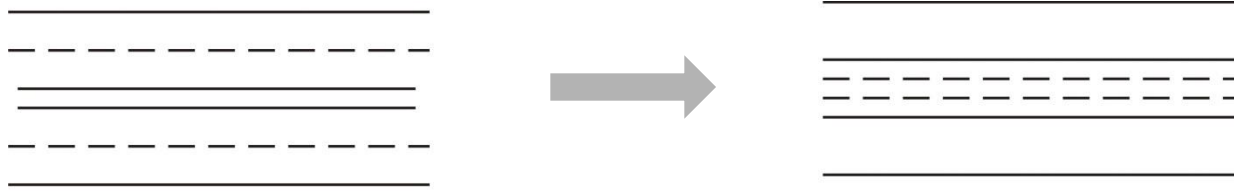


What We Will Do Under SB 743

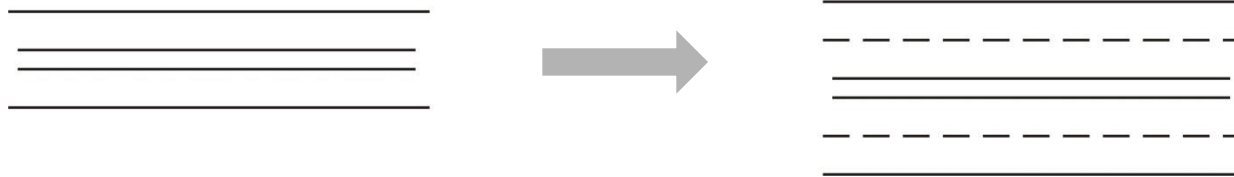


SB 743: A Transportation Engineer's Perspective

Transportation Projects

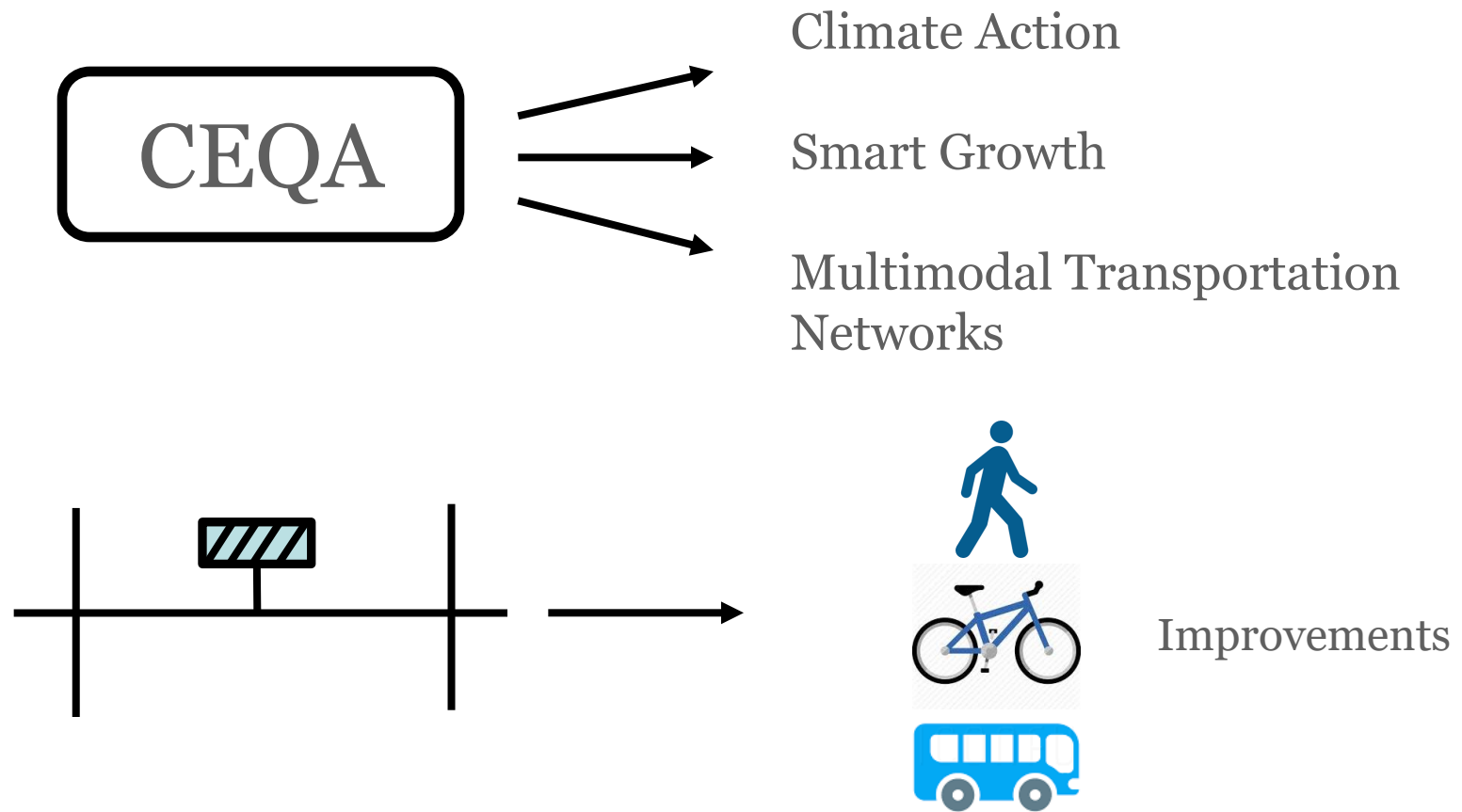


Net Change in VMT = ?



Net Change in VMT = ?

SB 743: Opportunities



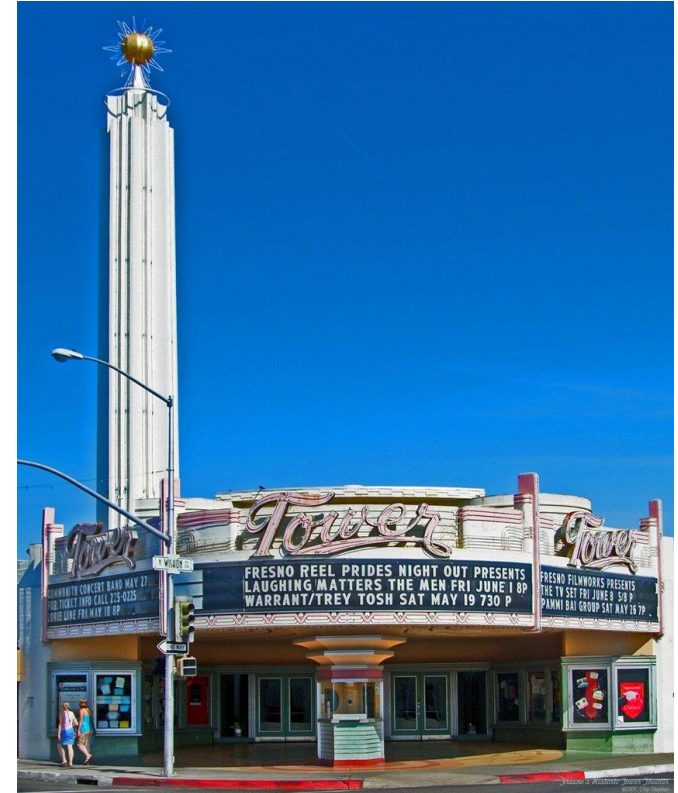
SB 743: Challenges

- ❖ Development Projects in Auto-Oriented Areas: Should they provide roadway improvements?
- ❖ Small Projects in Auto-Oriented Areas: Will they require an EIR?
- ❖ Development Projects in Low-VMT Areas: Should they provide multimodal transportation improvements?
- ❖ Uncertainty Due to Potential Legal Challenges



San Diego Area SB 743 Guidelines

- ❖ San Diego Area Currently has LOS-based Traffic Impact Study (TIS) Guidelines prepared by Institute of Transportation Engineers (ITE) and San Diego Engineers Council
- ❖ New SB 743-based TIS Guidelines under development by ITE
- ❖ New TIS Guidelines will also include updated LOS-based guidelines for those agencies who continue to use LOS.



Comparison of Statewide and Draft San Diego Regional Guidelines

Issue	Statewide Guidance	San Diego Regional Guidance
Minimum Threshold for VMT Analysis	<ul style="list-style-type: none">• 110 ADT	<ul style="list-style-type: none">• 500 ADT or 1,000 ADT (depending on comparison to existing land use plans)
Basis for VMT Comparison	<ul style="list-style-type: none">• Regional or City-wide (residential)• Regional (office)	<ul style="list-style-type: none">• Regional, City-wide or community (for all projects)
VMT Analysis Methodology	<ul style="list-style-type: none">• Various methodologies discussed	<ul style="list-style-type: none">• Small Projects: Regional web-based VMT tool• Large Projects: Run model
Transportation Projects	<ul style="list-style-type: none">• No performance measure or threshold specified	<ul style="list-style-type: none">• Use VMT as performance measure• Threshold is based on comparison to current circulation element

San Diego Regional SB 743 Guidelines: Proposed Schedule

- ❖ Draft Guidelines Reviewed by ITE Members: January 2019
- ❖ Final Guidelines: April 2019
- ❖ Presentation at Western District ITE Meeting: June 2019

