

Unmet Public Transit Needs within Fresno County

Notice of 2017-18 Findings

Adopted June 29, 2017

Documentation of “no unmet transit needs that are reasonable to meet” for the following jurisdictions: Clovis, Coalinga, Firebaugh, Fowler, Fresno, Huron, Kerman, Kingsburg, Mendota, Orange Cove, Parlier, Reedley, San Joaquin, Sanger, Selma and Fresno County

Table of Contents

| | |
|---|----|
| 1. Resolution Defining “Unmet Transit Needs” and “Reasonable to Meet” | 4 |
| 2. Adopted Resolution 2017-19 | 6 |
| 3. Notice of Public Hearing..... | 7 |
| 4. Memorandum Soliciting Comments | 8 |
| 5. Public Outreach Attendance | 13 |
| 6. Transit Dependent Demographics | 15 |
| 7. Social Service Transportation Advisory Council (SSTAC)..... | 22 |
| 8. SSTAC Recommendation..... | 23 |
| 9. Staff Report | 26 |
| 10. Minutes of the Public Hearing, June 29, 2017 | 82 |

1. Resolution Defining "Unmet Transit Needs" and "Reasonable to Meet"

BEFORE THE COUNCIL OF FRESNO COUNTY GOVERNMENTS RESOLUTION 90-15

| | | |
|-------------------------|---|-----------------------|
| In the Matter of |) | RESOLUTION DEFINING |
| |) | "UNMET TRANSIT NEEDS" |
| TRANSPORTATION DEVELOP- |) | AND "REASONABLE TO |
| MENT ACT OF 1971 |) | MEET" |
| |) | |

WHEREAS, California Public Utilities Code, Section 99401.5 requires that the Council of Fresno County Governments, as the regional transportation planning agency, determine definitions of "unmet transit needs" and "reasonable to meet" as the basis for consideration of Unmet Transit Needs Findings;

NOW, THEREFORE, BE IT RESOLVED that the Council of Fresno County Governments hereby determines the following definitions:

Unmet Transit Needs

"Those public transportation or specialized transportation services that are identified in the Regional Transportation Plan and/or documented through the COFCG's annual unmet transit needs public hearing process that have not been implemented or funded."

Reasonable to Meet

"Those public transportation services identified in the Regional Transportation Plan, or proposed amendment thereto, which meet the following criteria:

- (1) Services which, if implemented or funded, would not cause the responsible operator or service claimant to exceed its appropriations limitation as set forth by Proposition 4 (Gann Limit).
- (2) Services which, if implemented or funded, would not cause the responsible operator to incur expenditures in excess of the maximum amount of:
 - (a) Local Transportation Funds and State Transit Assistance Funds which may be available for such operator to claim;
 - (b) Urban Mass Transportation Administration (UMTA) funds or other support for public transportation services which are committed by Federal and/or State agencies by formula or tentative approval of specific grant requests; and
 - (c) Farebox and local funding in compliance with PUC Section 99268 et.seq.

The fact that an identified need cannot fully be met based on available resources, however, shall not be the sole reason for finding that a transit need is not reasonable to meet.

- (3) Services which, if implemented or funded, would result in the responsible operator or service claimant meeting the farebox recovery and local support requirements as set forth by PUC Section 99268 et. seq. Evaluation of existing operators shall be based on records provided to COFCG by operators pursuant to the Transit Productivity Evaluation Process (PUC Section 99244).

Evaluation of proposed new service shall be based upon a feasibility analysis which includes, but is not limited to:

- (a) Forecast of anticipated ridership if service is provided.
- (b) Estimate of capital and operating costs for the provision of such services.
- (c) Estimate of fares and local support in relation to estimated operating costs for providing such services.
- (d) An estimated fare which the COFCG Board would determine to be sufficient to meet farebox recovery requirements, but would not be so high that it would pose a financial burden on transit dependent patrons.

BE IT FURTHER RESOLVED that these definitions remain in effect until such time a change is warranted.

THE FOREGOING RESOLUTION was passed and adopted by the Council of Fresno County Governments this 28th day of June, 1990.

AYES: Clovis, Fowler, Fresno, Fresno County, Huron, Kerman, Mendota, Orange Cove, Parlier, Reedley, San Joaquin, Sanger & Selma

NOES: None

ABSTAIN: None

ABSENT: Coalinga, Firebaugh and Kingsburg

Signed: 

Lawrence R. Wilder, President

ATTEST:

I hereby certify that the foregoing is a true copy of a resolution of the Council of Fresno County Governments duly adopted at a regular meeting thereof held on the 28th day of June, 1990.

Signed: 

William Briam, Executive Director

2. Adopted Resolution 2017-19

BEFORE THE
FRESNO COUNCIL OF GOVERNMENTS
RESOLUTION 2017-19

In the Matter of)
)
TRANSPORTATION)
DEVELOPMENT ACT OF)
1971)
_____)

RESOLUTION DETERMINING IF
THERE ARE AREAS WITHIN THE
JURISDICTION OF THE FRESNO COUNCIL OF
GOVERNMENTS
WITH UNMET PUBLIC TRANSPORTATION
NEEDS WHICH CAN REASONABLY BE MET

WHEREAS, the California Public Utilities Code, Section 99401.5 requires that the transportation planning agency hold a public hearing and make a determination that there are no unmet transportation needs within its jurisdiction which can be reasonably met before claims for Local Transportation Funds for streets and roads may be approved; and

WHEREAS, the Fresno Council of Governments (Fresno COG) in compliance with Section 99401.5, defines unmet public transportation needs as those public transportation or specialized transportation services that are identified in the Regional Transportation Plan and/or documented through the Fresno COG's Annual Unmet Transit Needs Public Hearing Process that have not been implemented or funded.

WHEREAS, the Fresno COG Board, after consultation with its Social Services Transportation Advisory Council, held such public hearing on June 29, 2017 and received testimony from all interested persons; and

WHEREAS, the complete report contains responses delivered to all comments received during the information gathering meetings; and

WHEREAS, the Cities of Fresno and Clovis will provide fixed route transit service in accordance with Federal and State policies, and also will provide demand-responsive public transportation service to the general public, elderly and disabled residents within its jurisdiction; and

WHEREAS, the following jurisdictions are members of the Fresno County Rural Transit Agency (FCRTA) and provide service under contract with that joint powers agency: Coalinga, Firebaugh, Fowler, Huron, Kerman, Kingsburg, Mendota, Orange Cove, Parlier, Reedley, San Joaquin, Sanger, Selma and Fresno County; and

WHEREAS, such contracts for service and direct service results in the delivery of public transportation service within Fresno COG's jurisdiction and is in conformance with and satisfies the service requirements of the adopted Regional Transportation Plan for Fresno County.

NOW, THEREFORE, BE IT RESOLVED, that the Fresno Council of Governments, pursuant to California Public Utilities Code Section 99401.5(d,2), finds for each of the following entities that there are no unmet transit needs that are reasonable to meet: Clovis, Coalinga, Firebaugh, Fowler, Fresno, Huron, Kerman, Kingsburg, Mendota, Orange Cove, Parlier, Reedley, San Joaquin, Sanger, Selma and Fresno County.

THE FOREGOING RESOLUTION was passed and adopted by the Fresno Council of Governments this 29th day of June, 2017.

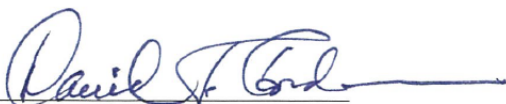
AYES: Coalinga, Fowler, Fresno City, Huron, Kerman, Kingsburg, Parlier, Reedley, Sanger, Selma, Fresno County

NOES: None


ABSTAIN: None

ABSENT: Clovis, Firebaugh, Mendota, Orange Cove, San Joaquin

ATTEST:

Signed: 
Amarpreet Dhaliwal, Chairman

I hereby certify that the foregoing is a true copy of a resolution of the Fresno Council of Governments duly adopted at a regular meeting thereof held on the 29th day of June, 2017.

Signed: 
Tony Boren, Executive Director

3. Notice of Public Hearing

FRESNO COUNCIL OF GOVERNMENTS
2035 TULARE ST, STE 201
FRESNO, CA 937212004
0003097737

The Fresno Bee
fresnobee.com

Central Valley
The Valley's Lifestyle Magazine
SIERRA STAR
Serving Eastern Madera Since 1957

Vida
en el valle

PROOF OF PUBLICATION

COUNTY OF FRESNO STATE OF CALIFORNIA

The undersigned states:

McClatchy Newspapers in and on all dates herein stated was a corporation, and the owner and publisher of The Fresno Bee. The Fresno Bee is a daily newspaper of general circulation now published, and on all-the-dates herein stated was published in the City of Fresno, County of Fresno, and has been adjudged a newspaper of general circulation by the Superior Court of the County of Fresno, State of California, under the date of November 28, 1994, Action No. 520058-9.

The undersigned is and on all dates herein mentioned was a citizen of the United States, over the age of twenty-one years, and is the principal clerk of the printer and publisher of said newspaper; and that the notice, a copy of which is hereto annexed, marked Exhibit A, hereby made a part hereof, was published in The Fresno Bee in each issue thereof (in type not smaller than nonpareil), on the following dates.

May 29, 2017

I certify (or declare) under penalty of perjury that the foregoing is true and correct.

Dated June 06, 2017

Holly Zarate

RECEIVED

JUN 13 2017

BY: _____
FRESNO COG

PUBLIC NOTICE

#3097737

PUBLIC NOTICE

The Fresno Council of Governments (COG) will hold six public hearings beginning at 5:30 p.m. on Thursday, June 29, 2017 at the Fresno Council of Governments, 2035 Tulare St., Suite 201, Sequoia Room, Fresno, California. The hearings will consider:

1. Rural Short Range Transit Plan for Rural Fresno County Fiscal Year 2018-2022

The Short Range Transit Plan for the Rural Fresno County Area (SRTTP) addresses public transportation for the cities of Coalinga, Firebaugh, Fowler, Huron, Kerman, Kingsburg, Mendota, Orange Cove, Parlier, Reedley, Sanger, San Joaquin, Selma and the County of Fresno. The SRTTP provides a five-year, action-oriented program designed to implement the Public Transportation Element of the Regional Transportation Plan. The Plan also provides a basis for local governments to demonstrate that public transportation needs within their jurisdiction have been, and may continue to be, reasonably met. For further information, contact Moses Stiles at (559) 233-6789.

2. Fresno Clovis Metropolitan Area (FCMA) Short Range Transit Plan Fiscal Year 2018 - 2022

The Short Range Transit Plan for the Fresno-Clovis Urban Area (SRTTP) is the annual update to the operating plan and capital programs for Fresno Area Express (FAX) and Clovis Transit. The purpose of this Plan is to promote a comprehensive, coordinated and continuous planning process for transit service in the Fresno Clovis Metropolitan Area. This Plan represents a short-range evaluation of transit needs and proposes specific recommendations for implementing the long-range objectives of Fresno County's Regional Transportation Plan. The Plan will guide the provision of transit services in the Metropolitan Area over the next five years. For further information, contact Jeff Long at (559) 621-1436.

3. Clovis Consolidated Transportation Service Agency Operations Program and Budget, FY 2017-18

The Consolidated Transportation Services Agency's (CTSA) Operations Program and Budget for the Clovis Urban Area, FY 2017-18 is designed to provide an overview of how and in what manner the Consolidated Transportation Services Agency will be providing services in the Clovis urban area over the next fiscal year. For further information, contact Amy Hance at (559) 324-2769.

4. Urban and Rural Consolidated Transportation Service Agency (CTSA) Operations Program and Budget for the Fresno Area, FY 2017-18

The Consolidated Transportation Services Agency's (CTSA) Operations Program and Budget for the Fresno Urban and Rural Areas, FY 2017-18 is designed to provide an overview of how and in what manner the Consolidated Transportation Services Agency will be providing services in urban and rural Fresno County over the next fiscal year. For further information, contact Monty Cox at (559) 263-8004.

5. Unmet Transit Needs, Staff Report & Recommendations

The Unmet Transit Needs hearing will determine if public transportation needs within Fresno County will be reasonably met in the 2017-18 fiscal year. Specific incorporated cities to be discussed are: Clovis, Coalinga, Firebaugh, Fowler, Fresno, Huron, Kerman, Kingsburg, Mendota, Orange Cove, Parlier, Reedley, Sanger, San Joaquin, and Selma. The County of Fresno's participation in meeting public transportation needs in other rural unincorporated communities will also be discussed. For further information, contact Jeff Long at (559) 621-1436.

Individuals with disabilities may call Fresno COG (with 3-working-day advance notice) to request auxiliary aids necessary to participate in the public hearing. Translation services are available (with 3-working-day advance notice) to participants speaking any language with available professional translation services.

6. Fresno County Rural Transit Agency (FCRTA) 2017-18 Annual Budget

The budget has been prepared to be reflective of the Fresno Council of Governments' (Fresno COG) 2014 Regional Plan (RTP) and the Short Range Transit Plan (SRTTP) for the 2018-2022 Rural Fresno County Area. The document recommends the implementation of programmed service improvements and the continuation of existing services. This year's draft

4. Memorandum Soliciting Comments

January 27, 2017

MEMORANDUM

TO: Interested Individuals and/or Organizations

FROM: BILL HYATT, Chairman
Social Services Transportation Advisory Council

SUBJECT: DO YOU NEED MORE PUBLIC TRANSIT?

If you use buses or vans in Fresno County, or if you know people or clients in your organization who depend on buses or other forms of public transit, please read this announcement and post the enclosed flyer.

Every year, the SSTAC, which is part of the Fresno Council of Governments (Fresno COG), tries to find out whether residents of Fresno County have enough public transportation to get where they need to go. The SSTAC is part of the Fresno COG, and represents social service agencies, transit operators, and transit riders.

If you or others you know are aware of a specific transit need that is not currently being met by one of the existing public transit agencies, social service agencies, or a private sector operator, PLEASE LET US KNOW!

You can tell us in two ways – send a letter or come to a meeting. If you send a letter, please mail or fax it to:

Bill Hyatt, SSTAC Chairman
Central Valley Regional Center, Inc.
4615 North Marty
Fresno, CA 93722 Fax no: (559) 276-4360

Three meetings will be held during February 2017:

Tuesday, February 14, 2017 – 5:30pm – Fresno-Clovis Metropolitan Area

Clovis Senior Center
850 Fourth Street
Clovis, CA 93612

Wednesday, February 15, 2017 – 5:30pm – West Side of Fresno County

San Joaquin Senior Center
21991 W. Colorado
San Joaquin, CA 93660

Thursday, February 16, 2017 – 5:30pm – East Side of Fresno County

Orange Cove Community Center
1705 Anchor Dr.
Orange Cove, CA 93646

The meeting rooms and restrooms are ADA accessible. Representatives or individuals with disabilities should contact Fresno COG (559-233-4148), at least 3 days in advance, to request auxiliary aids and/or translation services necessary to participate in the public meeting.

Here is the information needed to help the SSTAC and Fresno Council of Governments decide whether it would be reasonable to increase transit service:

1. Where new service is needed, and where trips would begin and end.
2. When and how often buses or vans would need to operate.
3. Description of the individuals who need the service. Include age group, financial constraints, and whether they have disabilities that would require special services.

For your information, the Fresno Council of Governments (Fresno COG) is the Regional Transportation Planning Agency, and is responsible for ensuring that public transportation needs are being "reasonably met". "Reasonable" means there is enough money to provide the service AND there are enough individuals to use the new service.

Every year, on behalf of the Fresno COG, the SSTAC contacts hundreds of organizations and individuals to determine whether transit needs are being reasonably met. After gathering information, the SSTAC recommends to the Fresno COG Policy Board whether there are any unmet transit needs that are reasonable to meet.

If you have questions about transit services in your area, please contact one of the staff representatives listed below:

- City of Fresno – Mr. Jeff Long, Senior Regional Planner (5659) 621-1436
- City of Clovis – Ms. Amy Hance, Transit Supervisor, (559) 324-2769
- Rural Communities – Mr. Moses Stites, FCRTA General Manager, (559) 233-6789
- Social Services Programs – Mr. Gary Joseph, CTSA Transit System Director (559) 486-6594

We cannot make the best decisions about increasing transit service unless we hear from the people who use transit in Fresno County. **Please respond and please spread the word!**

Thank you in advance for your assistance and cooperation.

Bill Hyatt, Chairman
(559) 276-4341
BHyatt@cvrc.org

27 de enero de 2017

MEMORÁNDUM

PARA: Personas y/o Organizaciones Interasadas

DE: BILL HYATT, Presidente
Consejo Consultivo de Transporte de Servicios Sociales

TÉMA: ¿NECESITA MÁS TRANSPORTE PÚBLICO?

Si utiliza autobuses o vans en el Condado de Fresno, o si conoce a personas o clientes en su organización que dependen de autobuses y otras formas de transporte público, por favor lea este anuncio y publique el volante adjunto.

Cada año, el SSTAC, que forma parte del Consejo de Gobiernos de Fresno (Fresno COG), intenta averiguar si los residentes del Condado de Fresno tienen suficiente transporte público para llegar a donde necesitan ir. El SSTAC es parte de Fresno COG y representa a agencias de servicios sociales, operadores de transporte y pasajeros de tránsito.

Si usted o conocidos suyos saben de alguna necesidad de tránsito específica que no se está cumpliendo actualmente por una de las agencias existentes de transporte público, agencias de servicios sociales, o un operador del sector privado, POR FAVOR, DEJENOS SABER! Nos puede decir de dos maneras – enviar una carta o venga a una junta. Si usted envía una carta, por favor mándela por correo o fax a:

Bill Hyatt, SSTAC Chairman
Central Valley Regional Center, Inc.
4615 North Marty
Fresno, CA 93722 no. de Fax: (559) 276-4360

Se realizarán tres reuniones durante Febrero de 2017:

Martes, Febrero 14, 2017 – 5:30pm – Fresno-Clovis Área Metropolitana

Clovis Senior Center
850 Fourth Street
Clovis, CA 93612

Miércoles, Febrero 15, 2017 – 5:30pm – Lado Oeste del Condado de Fresno

San Joaquin Senior Center
21991 W. Colorado
San Joaquin, CA 93660

Jueves, Febrero 16, 2017 – 5:30pm – Lado Este del Condado de Fresno

Orange Cove Community Center
1705 Anchor Dr.
Orange Cove, CA 93646

Las salas de reuniones y baños son ADA accesibles. Representantes o personas con discapacidad deben contactar a Fresno COG (559-233-4148), por lo menos con 3 días de anticipo, para solicitar auxilios y servicios de traducción necesarios para participar en la junta pública.

Esta es la información que necesitamos para ayudar al SSTAC y al Consejo de Gobiernos de Fresno decidir si sería razonable aumentar el servicio de transporte:

1. Donde es necesario el nuevo servicio y donde comienzan y terminan los viajes.
 3. Descripción de las personas que necesitan el servicio. Incluyan la edad, las
 2. Cuándo y con qué frecuencia tendrían que operar los autobuses o vans.
- limitaciones financieras, y si tienen discapacidad que requiere servicios especiales.

Para su información, el Consejo de Gobiernos de Fresno (Fresno COG) es la Agencia de Planificación del Transporte Regional y es responsable de asegurar que las necesidades de transporte público se "cumplan razonablemente." "Razonablemente" significa que hay suficiente dinero para proporcionar el servicio y hay suficientes personas para usar el nuevo servicio.

Cada año, en nombre del Consejo de Gobiernos de Fresno, el SSTAC contacta a cientos de organizaciones e individuos para determinar si se está cumpliendo razonablemente con las necesidades del transporte público. Después de reunir información, el SSTAC recomienda a la Junta de Política de Fresno COG si existen algunas necesidades de transporte insatisfechas y que se puedan razonablemente satisfacer.

Si tiene preguntas sobre los servicios de tránsito en su área, póngase en contacto con uno de los representantes del personal, a continuación:

- Ciudad de Fresno – Mr. Jeff Long, Fresno COG Transit Planner (5659) 621-1436
- Ciudad de Clovis – Ms. Amy Hance, Transit Supervisor, (559) 324-2769
- Comunidades Rurales – Mr. Moses Stites, FCRTA General Manager, (559) 233-6789
- Programas de Servicios Sociales – Mr. Gary Joseph, CTSA Transit System Director (559) 486-6594

No podemos tomar las mejores decisiones sobre aumentar el servicio de tránsito a menos que escuchemos de las personas que usan el tránsito en el Condado de Fresno. **Por favor respondan y por favor corran la voz!**

Gracias de antemano por su ayuda y cooperación.

Bill Hyatt, Chairman
(559) 276-4341
BHyatt@cvrc.org

5. Public Outreach Attendance

Attachment C

Information Gathering Meeting Attendance Lists

| UNMET TRANSIT NEEDS INFORMATION GATHERING MEETING FEBRUARY 14, 2017 CITY OF CLOVIS (FCMA) SIGN-IN SHEET | | |
|---|---------------------------------|--------------|
| NAME | ADDRESS | PHONE |
| Gary Joseph | FEOC | 266-3663 |
| Jeff Long | Fresno COG | 621-1436 |
| Amy Hance | City of Clovis | 324-2769 |
| Moses Stites | FCRTA | 233-6789 |
| Bethany Berube | 155 N Sunnyside Clovis CA 93612 | 324-2771 |
| Shonna Halterman | City of Clovis | 324-2767 |
| Bill Hyatt | CVRC | 276-4341 |
| Roman Estrada | 71 W. National Ave. | 349-7805 |
| Lorena Medibles | 1352 W. Olive (Caltrans) | 445-5421 |
| Gabriel Viveros | Congressman Valadao's Office | 417-7058 |
| Amanda Monaco | 746 P St. Ste. 012 Fresno 93721 | 352-359-0963 |
| Monty Cox | 3100 Nielsen Fresno (FEOC) | 263-1073 |

| UNMET TRANSIT NEEDS INFORMATION GATHERING MEETING FEBRUARY 15, 2017 CITY OF SAN JOAQUIN SIGN-IN SHEET | | |
|---|-------------------------|----------|
| NAME | ADDRESS | PHONE |
| Gary Joseph | FEOC | 266-3663 |
| Jeff Long | Fresno COG | 621-1436 |
| Monty Cox | FEOC | 263-8004 |
| Moses Stites | FCRTA | 233-6789 |
| Jose Ornelas | City of San Joaquin | 567-7302 |
| Elizabeth Nunez | City of San Joaquin | 693-4311 |
| Gean | Resident of San Joaquin | 274-6224 |

| UNMET TRANSIT NEEDS INFORMATION GATHERING MEETING FEBRUARY 16, 2017 CITY OF ORANGE COVE SIGN-IN SHEET | | |
|---|------------|----------|
| NAME | ADDRESS | PHONE |
| Monty Cox | FEOC | 266-8004 |
| Jeff Long | Fresno COG | 621-1436 |
| Moses Stites | FCRTA | 233-6789 |

6. Transit Dependent Demographics

Demographic Information

Transit Dependent Groups

Per the Transportation Development Act, Unmet Transit Needs findings must include an annual assessment of the size and location of identifiable groups likely to be transit dependent. Including but not limited to, the elderly, the disabled, including individuals eligible for paratransit and other special transportation services pursuant to Section 12143 of Title 42 of the United States Code, and persons of limited means, including, but not limited to, recipients under the CalWORKs program.

For the purposes of this document:

- Elderly are considered to be individual's age 65 years old and older.
- The terms "disability" refers to persons who because of physical or mental impairment are unable to drive automobiles or use public transit which is not specifically tailored to meet their needs.
- Persons of limited means are considered having incomes below the poverty threshold as defined by the federal government.

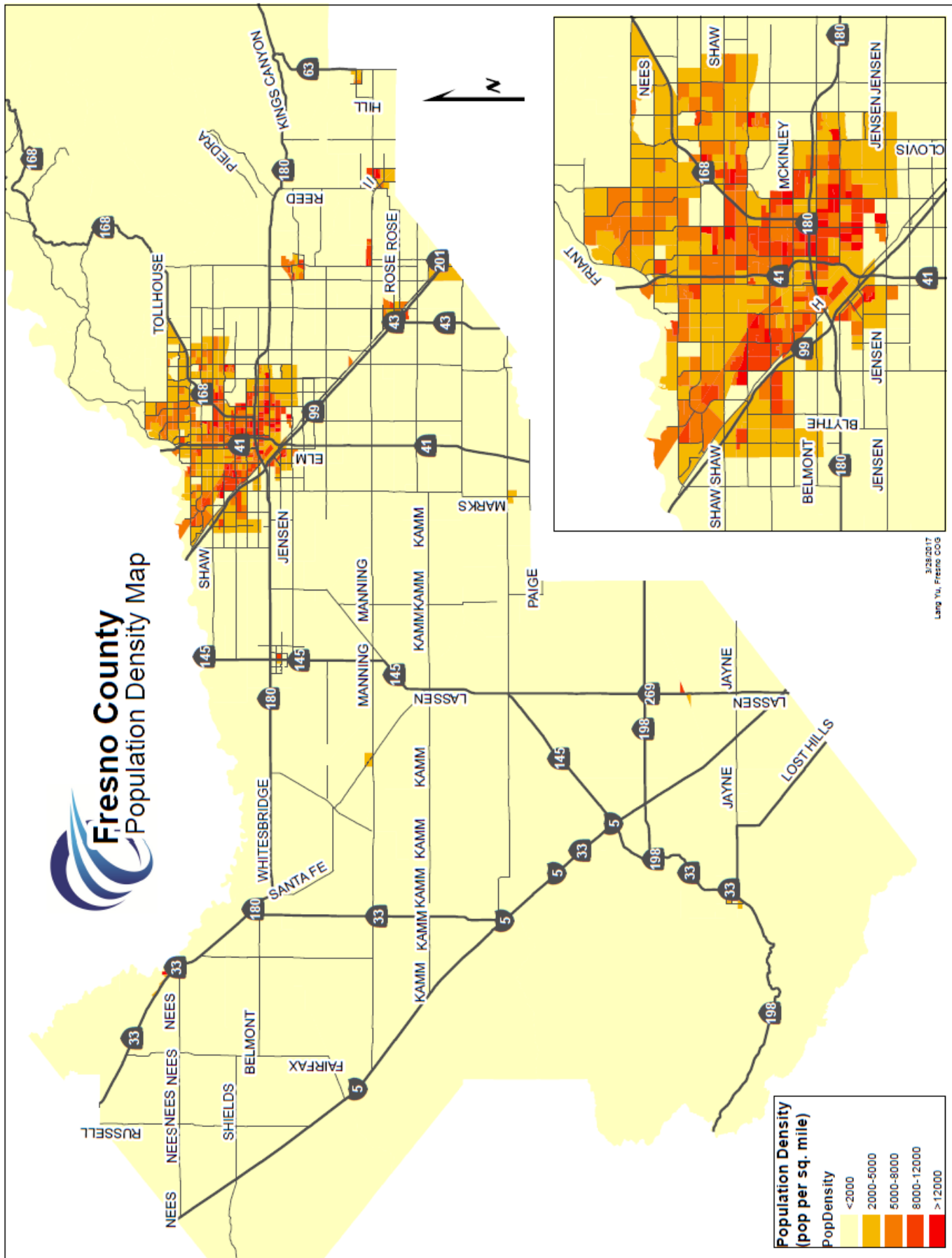
Demographic Data - Charts and Highlights

The determination of the size and location of identifiable groups likely to be "transit dependent" is based on the American Community Surveys, 2010 Census, and other pertinent data. The demographic data relevant to determining unmet transit needs in Fresno County is presented in the form of tables and maps.

The American Community Survey replaced the decennial census long form in 2010. The long-form previously collected decennially, will now collect detailed questions about socioeconomic and housing characteristics on an annual basis. The function of the decennial census will be to provide counts of people for the purpose of congressional apportionment and legislative redistricting. The primary purpose of the ACS is to measure the changing social and economic characteristics of the U.S. population. The use of the ACS data in this chapter will provide "snapshots" of our region's socioeconomic characteristics. The decision to select one-year, three-year, or five-year ACS "snapshots" is dependent on whether the intent is to reflect the most current data (e.g., one-year ACS) or a statistically more accurate "snapshot" (e.g., lower margin of error) over a larger period of time.

In this section, Table 2 presents an overview of the population in Fresno County. Figure 1 illustrates graphically how the population is dispersed throughout the incorporated and unincorporated areas in Fresno County.

Fresno County Population Density



The most rapid population increase between the 2000 and 2010 Census occurred in the City of Kerman with over a 67% growth. Other western Fresno County cities with significant increases were Coalinga (45%), Mendota (44%), and Firebaugh (40%). The metropolitan area of Fresno and Clovis also had significant growth increases of 19% and 51% respectively.

The City of Clovis now has a population in excess of 100,000 people. Pursuant to Senate Bill 716 (enacted 2009), cities with a population of 100,000 or more within a county that has a population of 500,000 or more will be required to expend 100% of the Local Transportation Funds (LTF) apportionment for public transit purposes. The City of Clovis has already been compiling with this requirement.

Population forecasts suggest that none of the other incorporated cities in Fresno County will exceed 100,000 in the next 20 years and therefore will be exempt from the provisions of Senate Bill 716. The California Department of Finance annual city and county population estimates will be used to identify when the population threshold has been met. SB 716 represents a fundamental change in the manner in which public transit will be financed in the future.

Table 2
Total Population and Percent Change

| Planning Area | Population | | | % Change | % Annual Change |
|---------------------|----------------|----------------|----------------|--------------|-----------------|
| | 2000 | 2010 | 2015 (ACS) | 2010 - 2015 | 2000 - 2015 |
| City of Clovis | 66,468 | 95,631 | 100,437 | 5.03% | 51.11% |
| City of Coalinga | 11,668 | 13,380 | 16,940 | 26.61% | 45.18% |
| City of Firebaugh | 5,743 | 7,549 | 8,084 | 7.09% | 40.76% |
| City of Fowler | 3,979 | 5,570 | 6,006 | 7.83% | 50.94% |
| City of Fresno | 427,652 | 494,665 | 510,451 | 3.19% | 19.36% |
| City of Huron | 6,306 | 6,754 | 6,792 | 0.56% | 7.71% |
| City of Kerman | 8,551 | 13,544 | 14,285 | 5.47% | 67.06% |
| City of Kingsburg | 9,199 | 11,382 | 11,681 | 2.63% | 26.98% |
| City of Mendota | 7,890 | 11,014 | 11,402 | 3.52% | 44.51% |
| City of Orange Cove | 7,722 | 9,078 | 9,565 | 5.36% | 23.87% |
| City of Parlier | 11,145 | 14,494 | 14,870 | 2.59% | 33.42% |
| City of Reedley | 20,756 | 24,194 | 25,092 | 3.71% | 20.89% |
| City of San Joaquin | 3,270 | 4,001 | 4,008 | 0.17% | 22.57% |
| City of Sanger | 18,931 | 24,270 | 24,700 | 1.77% | 30.47% |
| City of Selma | 19,444 | 23,219 | 24,017 | 3.44% | 23.52% |
| County of Fresno | 170,683 | 171,705 | 168,419 | -1.91% | -1.33% |
| Total | 799,407 | 930,450 | 956,749 | 2.83% | 19.68% |

Table 4 presents 2011-2015 American Community Survey (ACS 5-year) data on population, by age and income characteristics. This data is important to this analysis because studies have shown that age and income have a high correlation with automobile usage and transit dependency. Persons age 65 and over are separated as a subset of the total population figures. In some jurisdictions, these individuals become eligible for transit services solely based on their age. In others, they qualify for reduced fares because of their age. In either case, they are recognized as a select group of people who may have special transportation needs met through public transportation.

Poverty statistics in ACS products adhere to the standards specified by the Office of Management and Budget in Statistical Policy Directive 14. The Census Bureau uses a set of dollar value thresholds that vary by family size and composition to determine who is in poverty. Further, poverty thresholds for people living alone or with nonrelatives (unrelated individuals) vary by age (under 65 years or 65 years and older). The poverty thresholds for two-person families also vary by the age of the householder. If a family's total income is less than the dollar value of the appropriate threshold, then that family and every individual in it are considered to be in poverty. Similarly, if an unrelated individual's total income is less than the appropriate threshold, then that individual is considered to be in poverty.

Table 4
Age and Income, Year 2015

| Jurisdiction | Population 2015 | Persons: Age 65 + | % Total Pop. | Persons: Low Income | % Total Pop. | Persons: Age 65+ & Low Income | % Total Pop. |
|---------------------|--------------------|----------------------|-----------------|---------------------------|-----------------|--|-----------------|
| City of Clovis | 100,437 | 11,758 | 11.7% | 13,731 | 13.7% | 800 | 0.8% |
| City of Coalinga | 16,940 | 1,116 | 6.6% | 2,857 | 16.9% | 84 | 0.5% |
| City of Firebaugh | 8,084 | 409 | 5.1% | 2,708 | 33.5% | 63 | 0.8% |
| City of Fowler | 6,006 | 661 | 11.0% | 1,505 | 25.1% | 28 | 0.5% |
| City of Fresno | 510,451 | 50,349 | 9.9% | 149,592 | 29.3% | 6,732 | 1.3% |
| City of Huron | 6,792 | 451 | 6.6% | 2,432 | 35.8% | 175 | 2.6% |
| City of Kerman | 14,285 | 1,119 | 7.8% | 3,646 | 25.5% | 100 | 0.7% |
| City of Kingsburgh | 11,681 | 1,481 | 12.7% | 2,065 | 17.7% | 117 | 1.0% |
| City of Mendota | 11,402 | 680 | 6.0% | 5,255 | 46.1% | 180 | 1.6% |
| City of Orange Cove | 9,565 | 477 | 5.0% | 5,069 | 53.0% | 127 | 1.3% |
| City of Parlier | 14,870 | 980 | 6.6% | 6,251 | 42.0% | 238 | 1.6% |
| City of Reedley | 25,092 | 2,792 | 11.1% | 6,616 | 26.4% | 264 | 1.1% |
| City of San Joaquin | 4,008 | 179 | 4.5% | 2,171 | 54.2% | 97 | 2.4% |
| City of Sanger | 24,700 | 2,578 | 10.4% | 5,671 | 23.0% | 561 | 2.3% |
| City of Selma | 24,017 | 2,613 | 10.9% | 5,793 | 24.1% | 395 | 1.6% |
| Unincorporated Area | 168,419 | 26,472 | 15.7% | 36,825 | 21.9% | 2,813 | 1.7% |
| Total | 956,749 | 104,115 | 10.9% | 252,187 | 26.4% | 12,774 | 1.3% |

Table 5 provides data on individuals with disabilities by gender and age. This information is from the 2011-2015 ACS data includes non-institutionalized persons, age 5 and older, who have a "disability." Individuals were asked if they, or others in the household, had a health condition that has lasted for 6 or more months which makes it difficult to go outside of the home alone. Persons that have such a difficulty as a result of a health condition are said to have a mobility limitation. Increased public transportation would be an asset to those who have a mobility limitation.

Table 5
Gender By Age By Disability

| Fresno County | Estimate | % over Total | Fresno County | Estimate | % over Total |
|------------------------------------|----------|--------------|----------------------------|----------|--------------|
| Total Population | 956,749 | 100.0% | Total Population | 956,749 | 100.0% |
| Male | 477,316 | 49.9% | Female | 479,433 | 50.1% |
| Under 5 | 40,416 | 4.2% | Under 5 | 39,027 | 4.1% |
| With a Disability | 206 | 0.0% | With a Disability | 237 | 0.0% |
| No Disability | 40,210 | 4.2% | No Disability | 38,790 | 4.1% |
| 5 to 17 | 101,033 | 10.6% | 5 to 17 | 96,999 | 10.1% |
| With a Disability | 6,253 | 0.7% | With a Disability | 3,587 | 0.4% |
| No Disability | 94,780 | 9.9% | No Disability | 93,412 | 9.8% |
| 19 to 64 | 281,499 | 29.4% | 19 to 64 | 284,765 | 29.8% |
| With a Disability | 31,805 | 3.3% | With a Disability | 32,217 | 3.4% |
| No Disability | 249,694 | 26.1% | No Disability | 252,548 | 26.4% |
| 65+ | 45,096 | 4.7% | 65+ | 56,518 | 5.9% |
| With a Disability | 18,985 | 2.0% | With a Disability | 23,724 | 2.5% |
| No Disability | 26,111 | 2.7% | No Disability | 32,794 | 3.4% |
| Total Male with Disability | 57,249 | 6.0% | Total Male with Disability | 59,765 | 6.2% |
| Total Population with a Disability | 117,014 | 12.2% | | | |

| Fresno County | Estimate | % over Total | Fresno County | Estimate | % over Total |
|-------------------|----------|--------------|-------------------|----------|--------------|
| Total Population | | | Total Population | | |
| Male | | #VALUE! | Female | | #VALUE! |
| Under 5 years | | #VALUE! | Under 5 years | | #VALUE! |
| With a Disability | | #VALUE! | With a Disability | | #VALUE! |
| No Disability | | #VALUE! | No Disability | | #VALUE! |
| 5 to 17 years | | #VALUE! | 5 to 17 years | | #VALUE! |
| With a Disability | | #VALUE! | With a Disability | | #VALUE! |
| No Disability | | #VALUE! | No Disability | | #VALUE! |

| | | | | | |
|---|---|---------|--|---|---------|
| 19 to 64 years | | #VALUE! | 19 to 64 years | | #VALUE! |
| With a Disability | | #VALUE! | With a Disability | | #VALUE! |
| No Disability | | #VALUE! | No Disability | | #VALUE! |
| 65+ | | #VALUE! | 65+ | | #VALUE! |
| With a Disability | | #VALUE! | With a Disability | | #VALUE! |
| No Disability | | #VALUE! | No Disability | | #VALUE! |
| Total Male Population with a Disability | 0 | #VALUE! | Total Female Population with a Disability* | 0 | #VALUE! |
| Total Population with a Disability* | 0 | #VALUE! | | | |

Table 6 expands on the number of individuals in Fresno County between the ages of 19 and 64 by their disability and employment status. The 2011-2015 ACS data identifies that 566,264 residents are between the ages of 19 and 64 and that approximately 64,022 (6.7 percent) have a disability. Of those with a disability, 29.4 percent are employed, 8.5 percent are unemployed, and 59.4 percent are not in the workforce. Those residents without a disability make up 88.7 percent of those between the ages of 18 and 64. Of this group 65.4 percent are employed, 8.9 percent are unemployed, and 20.1 percent are not in the workforce.

Table 6
Employment Status By Disability

| Population 19 to 64 | Number | % of Pop |
|----------------------------|---------------|-----------------|
| Total | 566,264 | 59.2% |
| With a Disability | 64,022 | 6.7% |
| Employed | 18,812 | 29.4% |
| Unemployed | 5,462 | 8.5% |
| Not in Labor Force | 38,047 | 59.4% |
| No Disability | 502,242 | 88.7% |
| Employed | 328,617 | 65.4% |
| Unemployed | 44,520 | 8.9% |
| Not in Labor Force | 101,181 | 20.1% |

Fresno COG's definition of transit dependent focuses on individuals who, by virtue of their age, income, or disability, are not adequately served by the automobile. Information from the last available version of a summary from Caltrans entitled "Travel and Related Factors in California" was used as a foundation for identifying the incidence of individuals that are transportation-dependent.

According to the California Department of Motor Vehicles (DMV), in 2015 there were 561,764 driver licenses issued in Fresno County. This number represents approximately 74 percent of the population age 16 years and older. This means that approximately 26 percent of eligible drivers in Fresno County did not have a driver's license. In 2011, there were 515,837 licensed drivers, approximately 75 of the population 16 and older. The percentage of eligible drivers that do not have driver's licenses remained relatively flat between 2011 and 2015.

Overall, this information reflects the slight decrease in licensed drivers. The decrease could be contributed to many factors such as birth and death rate, changes in family income, disabled individuals, migration of residents in or out of the county, or the availability of public transportation. Ultimately, the need for more public transportation continues to be necessary.

Table 7
Licensed Drivers in Fresno County

| Age | Population 2015 | % of Total Pop |
|------------|------------------------|-----------------------|
| 0-15 | 247,798 | 25.9% |
| 16-18 | 29,659 | 3.1% |
| 18+ | 679,292 | 71.0% |
| All | 956,749 | 100.0% |

Table 9
Occupied Household / Vehicles in
Fresno County, Year 2015

| | |
|--|---------|
| Total Housing Units | 321,955 |
| Total Occupied Housing Units | 296,305 |
| Average # of Occupants | 1.81 |
| No. of Vehicles in Fresno County | 522,264 |
| Average # of Vehicles per Household | 1.62 |
| Average # of Drivers per Household | 1.74 |

7. Social Service Transportation Advisory Council (SSTAC)

Social Services Transportation Advisory Council Membership List Updated June 2017

| Potential Transit User 60 Years of Age or Older (minimum of 1) | | | |
|--|---------------------------------------|--------------|-------------------|
| Appointment | Resident of/Geographic Representation | Term Expires | Ethnic Background |
| Dottie Wright | Fresno/Fresno County | 5-2018 | Caucasian |

| Representatives of the Local Social Service Providers for Seniors (minimum of 2) | | | |
|--|---------------------------------------|--------------|-------------------|
| Appointment | Resident of/Geographic Representation | Term Expires | Ethnic Background |
| Adam Vinogradoff, FMAAA | Fresno/Fresno County | 6-2018 | Caucasian |
| Harpreet Kooner, Fresno County Public Works | Fresno/Fresno County | 5-2019 | Asian-Indian |

| Potential Transit User Who Is Disabled (minimum of 1) | | | |
|---|---------------------------------------|--------------|-------------------|
| Appointment | Resident of/Geographic Representation | Term Expires | Ethnic Background |
| Carlos Duarte, FAX | Fresno/Fresno County | 3-2018 | Mexican American |

| Representative of the Local Social Service Provider for Disabled (minimum of 2) | | | |
|---|---------------------------------------|--------------|-------------------|
| Appointment | Resident of/Geographic Representation | Term Expires | Ethnic Background |
| Vidal Medina, RICV | Fresno/Fresno County | 5-2020 | Hispanic |
| Bill Hyatt, CVRC | Fresno/Fresno County | 6-2018 | Caucasian |

| Representative of a Local Social Service Provider for Persons of Limited Means (minimum of 1) | | | |
|---|---------------------------------------|--------------|-------------------|
| Appointment | Resident of/Geographic Representation | Term Expires | Ethnic Background |
| Vacant | | | |

| Representatives from the Local Consolidated Transportation Service Agency (minimum of 2) | | | |
|--|---------------------------------------|--------------|-------------------|
| Appointment | Resident of/Geographic Representation | Term Expires | Ethnic Background |
| Amy Hance, Clovis Transit | Clovis/Fresno County | 6-2020 | Caucasian |
| Monty Cox, FEOC/CTSA | Fresno/Fresno County | 6-2020 | Caucasian |
| Moses Stites, FCRTA | Fresno/Fresno County | 3-2018 | Hispanic |
| Judith Nishi, FAX | Sanger/Fresno County | 6-2018 | Asian American |

| Representatives of General Public, who used Public Transit | | | |
|--|---------------------------------------|--------------|-------------------|
| Appointment | Resident of/Geographic Representation | Term Expires | Ethnic Background |
| Yonas Paulos | Fresno/Fresno County | 6-2020 | Other |
| | | | |

8. SSTAC Recommendation



2035 Tulare St., Ste. 201 tel 559-233-4148
Fresno, California 93721 fax 559-233-9645

www.fresnocog.org

SOCIAL SERVICES TRANSPORTATION ADVISORY COUNCIL Executive Minutes

Date: May 16, 2017
Time: 1:30 p.m.
Place: COG Conference Room, Second Floor
2035 Tulare Street, Suite 201
Fresno, CA 93721

Members Present:

Bill Hyatt, CVRC
Harpreet Kooner, Fresno County
Judith Nishi, FAX
Vidal Medina, RICV
Adam Vinogradoff, FINAAA
Amy Hance, Clovis Transit
Carlos Duarte, Handy Ride
Monty Cox, FEOC
Moses Stites, FCRTA

Others Attending:

Jeff Long, FAX/FCOG Stephanie Maxwell, Fresno COG
Peggy Arnest, Fresno COG
Yonas Paulos, Veterans Advocate

Bill Hyatt called the meeting to order at 1:34 p.m.

I. Public Presentations

This portion of the meeting is reserved for persons wishing to address the SSTAC on the items within its jurisdiction but not on this agenda.

Vidal Medina introduced Yonas Paulos to the committee.

Mr. Paulos gave a brief bio of himself to the committee.

II. Executive Minutes of April 18, 2017 [Approve]

A motion was made by Moses Stites and seconded by Monty Cox to approve the Executive Minutes of April 18, 2017. A vote was called for and the motion carried.

III. Unmet Transit Needs Finding [Approve]

Jeff Long explained the Unmet Transit Needs Findings item that will go to the TTC/PAC and the Board next month for approval. Mr. Long highlighted on some of the items in the Unmet Needs Finding report and what it would take to qualify for the Unmet Needs process.

A motion was made by Carlos Duarte and seconded by Vidal Medina to approve the SSTAC recommending the finding that there are no Unmet Transit Needs that are reasonable to meet within the following jurisdictions:

City of Clovis
City of Coalinga
City of Firebaugh
City of Fowler
City of Fresno
City of Huron
City of Kerman
City of Kingsburg
City of Mendota
City of Orange Cove
City of Parlier
City of Reedley
City of Sanger
City of San Joaquin
City of Selma
Fresno County

A vote was called for and the motion carried.

IV. Membership (New Members) [Approve]

Jeff Long welcomed Yonas Paulos as a new member of the SSTAC. Mr. Long also informed the committee of other people who expressed an interest in wanting to become a member.

A motion was made by Amy Hance and seconded by Moses Stites to approve Yonas Paulos as a member of the SSTAC Committee. A vote was called for and the motion carried.

V. Transit Documents [Approve]

Jeff Long reported on this item.

1. FCMA SRTP [Approve]

Jeff Long gave a brief synopsis of the Fresno –Clovis Metropolitan Area Short Range Transit Plan and Amy Hance gave the Clovis side of the Fresno –Clovis Metropolitan Area Short Range Transit Plan.

2. Rural SRTP [Approve]

Moses Stites gave a brief synopsis on the Rural Short Range Transit Plan.

3. CTSA's OPB [Approve]

Amy Hance also briefed the committee on the Consolidated Transportation Service Agency Operations Program Budget.

A motion was made by Moses Stites and seconded by Carlos Duarte to approve the Fresno –Clovis Metropolitan Area Short, Rural Short Range Transit Plan, and the Consolidated Transportation Service Agency Operations Program Budget. A vote was called for and the motion carried.

VI. Other Member Items

Vidal Medina informed the committee about an issue that happened on the bus with Michel Mendez. Mr. Mendez was placed on the bus facing backwards in his wheelchair and became ill. Mr. Vidal asked if any other complaints had come in from other passengers about being place backwards. Jeff Long said that he had not heard anything on that issue.

Next meeting will be June 20, 2017,

There being no further business, the meeting was adjourned.

Respectfully submitted,



Jeff Long
\sm

9. Staff Report

MEMORANDUM

DATE: May 16, 2017

TO: Fresno COG Social Service Transportation Advisory Council;
Fresno COG Transportation Technical Committee;
Fresno COG Policy Advisory Committee;
Fresno COG Policy Board; and
The General Public

FROM: Tony Boren, Executive Director

SUBJECT: STAFF REPORT AND RECOMMENDATIONS FOR "UNMET PUBLIC
TRANSPORTATION NEEDS" PUBLIC HEARING - JUNE 29, 2017

RECCOMENDATION

It is recommended the Fresno Council of Governments Policy Board find that there are no unmet public transportation needs, which are reasonable to meet within the County of Fresno.

DISCUSSION

On June 29, 2017, the Fresno Council of Governments (Fresno COG), as the Regional Transportation Planning Agency (RTPA) for Fresno County, will hold a legally noticed Public Hearing. The purpose of the hearing is to receive public testimony to determine if public transportation needs within Fresno County will be reasonably met in Fiscal Year (FY) 2017-2018 (July 1, 2017, through June 30, 2018), prior to approving claims of Local Transportation Funds (LTF) for streets and roads. The time and place of the Public Hearing have been legally noticed as follows:

Date: June 29, 2017
Time: 5:30 p.m.
Place: Fresno Council of Governments, Sequoia Room
2035 Tulare St., Suite 201
Fresno, California 93721-2004

Transportation Development Act (TDA) - Local Transportation Funds are derived from the State Sales Tax. Of the State's portion of the sales tax revenue, 1/4 of a cent goes to the Local Transportation Fund and may be used for transportation projects. In FY 2017-2018, the estimated Local Transportation Funds for Fresno County are \$35,000,000, of which \$100,000 is programmed for administration and audits, and \$974,757 is programmed for regional transportation planning. Table-1 identifies the amount of project funding each local agency will receive in FY 2017-2018.

Of the Local Transportation Funds available for public transportation and streets and roads, priority must first be given to public transportation, the net difference is then available for street and road projects.

TABLE-1
Available TDA-Local Transportation Funds
For Projects by Local Agencies FY 2017-2018

| Agency | Bicycle & Pedestrian Facilities | Social Service Transportation | Regional Transportation Planning | Public Transportation | Total |
|---------------|---------------------------------|-------------------------------|----------------------------------|-----------------------|---------------------|
| Clovis | \$76,5954 | \$199,425 | \$106,965 | \$3,458,546 | \$3,829,765 |
| Coalinga | \$11,816 | | \$16,501 | \$533,544 | \$590,811 |
| Firebaugh | \$5,781 | | \$8,073 | \$261,026 | \$289,043 |
| Fowler | \$4,214 | | \$5,885 | \$190,279 | \$210,702 |
| Fresno City | \$368,892 | | \$515,282 | \$16,660,751 | \$18,449,017 |
| Huron | \$4,902 | | \$6,845 | \$221,331 | \$245,087 |
| Kerman | \$10,185 | | \$14,223 | \$459,885 | \$509,246 |
| Kingsburg | \$8,579 | | \$11,981 | \$387,377 | \$428,596 |
| Mendota | \$8,339 | | \$11,646 | \$376,557 | \$416,974 |
| Orange Cove | \$6,537 | | \$9,128 | \$295,151 | \$326,831 |
| Parlier | \$10,914 | | \$15,242 | \$492,825 | \$545,721 |
| Reedley | \$18,432 | | \$25,741 | \$832,280 | \$921,612 |
| Sanger | \$18,450 | | \$25,765 | \$833,081 | \$922,498 |
| San Joaquin | \$2,869 | | \$4,007 | \$129,553 | \$143,458 |
| Selma | \$17,613 | | \$24,597 | \$795,307 | \$880,670 |
| Fresno County | \$123,792 | | \$172,876 | \$5,589,650 | \$6,189,609 |
| FCRTA | \$0 | \$512,107 | \$0 | \$0 | \$0 |
| FEOC | \$0 | \$998,568 | \$0 | \$0 | \$0 |
| Total | \$698,000 | \$1,710,100 | \$974,757 | \$31,517,143 | \$34,900,000 |

Pursuant to Section 99401.5 of the California Public Utilities Code, Fresno COG, as the Regional Transportation Planning Agency, must make a finding after holding a Public Hearing that there are no unmet public transportation needs within the jurisdiction of claimants which can be reasonably met before it may approve Local Transportation Fund claims for streets and roads.

DEFINITION OF "UNMET TRANSIT NEEDS," AND "NEEDS THAT ARE REASONABLE TO MEET"

Section 99401.5(c) of the California Public Utilities Code specifies, "The transportation planning agency shall determine its definitions of the terms 'unmet transit needs' and 'reasonable to meet' for the purposes of this section which shall be documented by resolution or within the minutes of the agency."

The Fresno COG defined these terms by Resolution 1990-15 as follows:

A. Unmet Transit Needs

“Those public transportation or specialized transportation services that are identified in the Regional Transportation Plan and/or documented through the Fresno COG's Annual Unmet Transit Needs Public Hearing Process that have not been implemented or funded.”

B. Reasonable to Meet

"Those public transportation services identified in the Regional Transportation Plan, or proposed amendment thereto, which meet the following criteria:"

- (1) Services which, if implemented or funded, would not cause the responsible operator or service claimant to exceed its appropriations limitation as set forth by Proposition 4 (Gann Limit)
- (2) Services which, if implemented or funded, would not cause the responsible operator to incur expenditures in excess of the maximum amount of:
 - (a) Local Transportation Funds and State Transit Assistance Funds which may be available for such operator to claim;
 - (b) Federal Transit Administration (FTA) funds or other support for public transportation services which are committed by Federal and/or State agencies by formula or tentative approval of specific grant requests; and
 - (c) Farebox and local funding in compliance with PUC Section 99268 et.seq.

The fact that an identified need cannot fully be met based on available resources shall not be the sole reason for finding a transit need is not reasonable to meet.

- (3) Services which, if implemented or funded, would result in the responsible operator or service claimant meeting the farebox recovery and local support requirements as set forth by PUC Section 99268 et. seq. Evaluation of existing operators shall be based on records provided to Fresno COG by operators pursuant to the Transit Productivity Evaluation Process (PUC Section 99244)

Evaluation of proposed new service shall be based upon a feasibility analysis, which includes, but is not limited to:

- (a) Forecast of anticipated ridership if service is provided;
- (b) Estimate of capital and operating costs for the provision of such services;
- (c) Estimate of fares and local support in relation to estimated operating costs for providing such services; and
- (d) An estimated fare, which the Fresno COG Board would determine to be sufficient to meet farebox recovery requirements, but would not be so high it would pose a financial burden on transit dependent patrons.

SOCIAL SERVICES TRANSPORTATION ADVISORY COUNCIL (SSTAC)

The Fresno COG Policy Board established its Social Service Transportation Advisory Council (SSTAC) on May 26, 1988, to aid in its review of transit issues with emphasis on the annual identification of transit needs within Fresno County. These needs include the needs of transit dependent and transit disadvantaged persons, including the elderly, disabled, and persons of limited means. The Fresno COG's establishment of this Advisory Council is consistent with State Law (SB 498, Chapter 673, 1987), which mandates both the purpose and minimum membership of this body. A list of SSTAC members is included with this report (Attachment A).

The purpose of the SSTAC is to:

- (1) Annually participate in identification of transit needs (Unmet Transit Needs Public Hearing Process)
- (2) Review and recommend appropriate action by the Fresno COG for a jurisdiction which finds by resolution, that:
 - (a) There are no unmet transit needs;
 - (b) There are no unmet transit needs, which are reasonable to meet;
 - (c) There are unmet transit needs, which are reasonable to meet.
- (3) Advise the Fresno COG on any other major transit issues, including the coordination and consolidation of specialized transportation services.

SSTAC UNMET TRANSIT NEEDS PROCESS

The SSTAC has developed an annual process for soliciting unmet transit need comments from the public. Over 400 letters are sent to agencies and individuals interested in providing feedback on their public transportation needs within Fresno County (Attachments B-1, B-2 and B-3). The letter was prepared in English and Spanish versions, and included a request for information regarding any unmet transit needs within Fresno County. Respondents were requested to include the following information to assist Staff in an initial evaluation of proposed services:

- Where new service is needed, and where the potential trips would start and end;
- When, and how often trips would need to be scheduled; and
- A description of the individuals needing the service including age group, financial constraints, and whether they have disabilities requiring special services.

As part of the information gathering process, SSTAC held three (3) public outreach meetings (Attachment C) to seek Unmet Transit Needs comments from residents throughout the County.

The first outreach meeting was held in the City of Clovis, on February 14, 2017, at the Clovis Senior Center at 850 Fourth Street, Clovis, CA 93712. The location was selected to facilitate comments from the residents of the Fresno-Clovis Metropolitan Area (FCMA) and surrounding unincorporated communities. The meeting time was set for 5:30 p.m. Comments received were related to service in the rural and unincorporated area of Cantua Creek. Amanda Monaco of the Leadership For Justice and Accountability informed the group of a project to establish a van pool program for this area. They were seeking grant funding for the demonstration project. Cantua Creek is currently served by Fresno County Rural Transit (FCRTA).

The second meeting was held in the City of San Joaquin on February 15, 2017 in the San Joaquin Senior Center at 21991 W. Colorado, San Joaquin, CA 93660. The location was selected to facilitate comments from the residents of Western Fresno county including: Coalinga, Firebaugh, Huron, Kerman, Mendota, San Joaquin, and the surrounding unincorporated communities. The meeting time was 5:30 p.m. The only concern was from a resident of San Joaquin that travels to the City of Kerman for shopping/prescriptions. FCRTA operates a hybrid fixed-route-demand response system for this area. This was an issue of service clarification and not an unmet need.

The final outreach meeting was held in the City of Orange Cove, on February 16, 2017, in the Orange Cove Community Center at 1705 Anchor Ave., Orange Cove, CA 93646. The meeting location was set to facilitate comments from the residents of Eastern Fresno county including: Fowler, Kingsburg, Orange Cove, Parlier, Reedley, Sanger, Selma, and the surrounding unincorporated communities. The meeting time was set for 5:30 p.m. No comments were received.

THE SSTAC's COMMENTS REGARDING SUBMITTED "UNMET TRANSIT NEEDS" REQUESTS

The SSTAC Chairman received one (1) written comment regarding perceived "Unmet Transit Needs". Copy of the actual letter and Staff response are attached to this Report. It is summarized as follows:

1. The only comment letter was received from Amanda Monaco, Policy Advocate at Leadership Counsel for Justice and Accountability, requesting the implementation of van pool and rideshare programs for the rural areas. In addition, they are requesting improved infrastructure near transit stations. Other concerns include transit service in southwest Fresno and Jane Adams Elementary School along with infrastructure needs.

Each of the actual comment letters/emails and Staff response letters are contained in the Fresno COG's "Unmet Transit Needs" Staff report, Attachment D, which is forwarded to the SSTAC for review, comment and recommendations.

The Fresno COG's Social Service Transportation Advisory Council (SSTAC) will continue to be involved in determining appropriate staff responses. Other proposals may yet be presented at the Fresno COG's Annual Unmet Transit Needs Public Hearing scheduled for 5:30 p.m. on Thursday, June 29, 2017. After adoption, other amendments may be funded with available contingency funds.

To fulfill their role in making a recommendation to forward onto the Fresno COG Advisory Committees (TTC/PAC) and ultimately to the Fresno COG Policy Board, the SSTAC (following an expressed opportunity for public comment) made the following recommendation, based on its May 16, 2017 findings:

In consideration of these actions, and in reference to the contents of the Fresno COG's Regional Transportation Plan and supporting implementation documents, specifically:

- The Short Range Transit Plan for the Fresno-Clovis Metropolitan Area, 2018-2022;
- The Short Range Transit Plan for the Rural Fresno County Area, 2018-2022;
- The Consolidated Transportation Service Agency's (CTSA) Operations Program and Budget 2017-2018 for the Fresno Urban CTSA, the Clovis CTSA and the Fresno County Rural CTSA; and
- The Fresno County Rural Transit Agency's 2017-2018 Budget.

Pending additional public testimony at the legally noticed Public Hearing scheduled before the Fresno COG's Policy Board on June 29, 2017, the SSTAC hereby has reached the following conclusion:

MOTION:

A motion was made by Carlos Duarte, and seconded by Vidal Medina, to make the following recommendation:

The SSTAC, through its recent efforts to solicit comments, is therefore, recommending the finding that there are no unmet transit needs, which are reasonable to meet within the following jurisdictions:

- | | |
|----------------------|-------------------------|
| 1. City of Clovis | 9. City of Mendota |
| 2. City of Coalinga | 10. City of Orange Cove |
| 3. City of Firebaugh | 11. City of Parlier |
| 4. City of Fowler | 12. City of Reedley |
| 5. City of Fresno | 13. City of Sanger |
| 6. City of Huron | 14. City of San Joaquin |
| 7. City of Kerman | 15. City of Selma |
| 8. City of Kingsburg | 16. Fresno County |

The voice vote was taken and the motion passed unanimously.

PUBLIC TRANSPORTATION PLAN SUMMARY

A. Overview

The Regional Transportation Plan (RTP) for public transportation services contains a Fresno-Clovis Metropolitan Area (FCMA) component, a Fresno County Rural component, and a Social Service Transportation component. The Metropolitan Area component is actualized through the "Short-Range Transit Plan (FCMA SRTP) for the Fresno-Clovis Urbanized Area 2018 - 2022" scheduled to be adopted on June 29, 2017 at the Fresno COG Board Meeting. It analyzes the metropolitan transit service needs and provides a detailed service plan for implementation over a five (5) year period. The Rural Area component is actualized through the "Short-Range Transit Plan (Rural SRTP) for the Fresno County Rural Area 2018-2022" scheduled to be adopted on June 29, 2017 at the Fresno COG Board Meeting. It analyzes rural transit service needs, and provides a detailed service plan for implementation over a five-year period.

In addition to these Short-Range Transit Plans for public transportation, the Fresno COG annually adopts an Operations Program and Budget for the coordination and consolidation of transportation for specialized social service programs within Fresno County. The -2017 - 2018 "Operations Program and Budget for the Fresno CTSA, the Clovis CTSA, and the Rural CTSA" is scheduled for adoption on June 29, 2017.

It must be emphasized, in order to "reasonably meet transit needs," it is necessary to satisfy the planned service requirements documented by the Regional Transportation Plan components described above (Administrative Code Section 6656). Further, State law (Administrative Code Section 6651) prescribes that expenditure of Local Transportation Funds must be in conformance with the Regional Transportation Plan. Fresno COG's Legal Counsel has interpreted these two (2) State law requirements as establishing what must be done (i.e., implement the planned transit service as contained in the Regional Transportation Plan) and what must not be done (i.e., do not provide transit service where it is *not* recommended by the Plan).

These dual requirements may appear inconsistent to individuals and organizations who believe there may be needs for service in areas of Fresno County where the Regional Transportation Plan does not now propose service, or where less service is proposed than they would desire. The inconsistencies are overcome through a continuous transportation planning process. Those who testify an unmet transit need does exist can be assured either their desired service has previously been analyzed and found to be unreasonable to meet, or their proposal will be evaluated to determine if it will be reasonable to amend the Plan and provide the desired service.

B. Fresno-Clovis Metropolitan Area (FCMA)

The Regional Transportation Plan calls for fixed-route service within the Metropolitan Area to be provided by the City of Fresno's Fresno Area Express (FAX), with financial participation from the City of Clovis and Fresno County for service to non-Fresno City residents within FAX's Service Area. Demand responsive Handy-Ride service is provided through FAX under contract with Keolis Transit America. The Short-Range Transit Plan for the Fresno-Clovis Metropolitan Area sets forth the specific service implementation plan for the five (5) fiscal year period of 2018 to 2022. It is this Short-Range Transit Plan (SRTP) that actualizes the more general service goals and objectives of the Regional Transportation Plan. The FCMA SRTP is scheduled to be adopted on June 29, 2017.

The Regional Transportation Plan and the FCMA Short-Range Transit Plan also continue to emphasize specialized service for disabled and elderly residents who are unable to utilize the fixed-route buses.

The estimated cost for operation of FAX in FY 2017-2018 is \$56.3 million. Service will be funded with \$24.8 million in State Transportation Development Act - Local Transportation Funds. FAX is also anticipating \$10.4 million in Measure C, and an additional \$7 million will be funded by the Federal Transit Administration. The remaining funds are derived from farebox revenues and special services provided under contracts with outside agencies such as the City of Clovis, Fresno County, and Valley Children's Hospital. Although the City of Fresno does not propose to expend any Local Transportation Funds on streets and roads in FY 2018, a "transit needs finding", is necessary to be consistent with SB-498. SB-498 states the lack of available resources shall *not* be the sole reason for finding a transit need is *not* reasonable to meet.

The City of Clovis operates two types of public transit service. Clovis Stageline provides general public fixed-route service within the City Limits. Clovis Round Up operates specialized demand-responsive service for the elderly and disabled residents. The City of Clovis has designated Round Up services as the Consolidated Transportation Services Agency (CTSA) for the Clovis Transit Service Area. The estimated cost for operation of Clovis Transit in FY 2017-2018 is \$5,300,000 million. The City of Fresno does not propose to expend any Local Transportation Funds on streets and roads in FY 2018, a "transit needs finding", is necessary to be consistent with SB-498. SB-498 states the lack of available resources shall *not* be the sole reason for finding a transit need is *not* reasonable to meet.

C. Rural Areas

The Regional Transportation Plan calls for service to rural portions of Fresno County, including intra-city service in and around thirteen (13) rural incorporated cities, two dozen unincorporated communities, and inter-city service linking those cities to the Fresno Metropolitan Area on the following corridors:

- (1) Firebaugh - Mendota - San Joaquin - Kerman Corridor to Fresno
- (2) Kingsburg - Selma - Fowler Corridor to Fresno
- (3) Orange Cove - Reedley - Parlier - Sanger Corridor to Fresno
- (4) Coalinga - Huron – Five Star - Five Points - Lanare - Riverdale - Caruthers - Raisin City - Easton Corridor to the Fresno

During the latter part of FY1978-1979 and the beginning of FY1979-1980, in cooperation with rural incorporated cities in Fresno County, Fresno COG prepared and adopted specific short-range transit development programs to define implementation of rural public transportation service in conformance with the Regional Transportation Plan. In September 1979, Fresno County Rural Transit Agency (FCRTA) was formed and assigned responsibility for implementing the service requirements of the Regional Transportation Plan as set forth by the Transit Development Programs. Services set forth by the Regional Transportation Plan and the Transit Development Programs were fully implemented by mid-February 1980.

A comprehensive Short-Range Transit Plan (Rural SRTP) for the Rural Fresno County Area, which updated the individual Transit Development Programs, was adopted on November 17, 1983. The five (5) year Rural SRTP is updated biannually. The latest update of the "Short-Range Transit Plan for the Rural Fresno County Area 2018-2022" is scheduled to be adopted on June 29, 2017. The estimated cost for the operation of the FCRTA in FY 2017-2018 is \$8,038,763. The Services will be funded with \$5,426,788 of State Transportation Development Act - (TDA) Local Transportation Funds (LTF). The FCRTA will utilize \$743,266 from its Measure – C funds to support the operations. An additional \$1,121,429 will be funded by the Federal Transit Administration (FTA). Farebox receipts are projected to be \$647,880 and Interest is estimated at \$99,400.

D. Social Service Transportation

The updated Social Service Transportation Action Plan and Inventory, was adopted January 29, 1998, and continues to co-designate the City of Fresno and the Fresno Economic Opportunities Commission (FEOC) as the Fresno Urban Consolidated Transportation Service Agency (CTSA). The Action Plan further designates City of Clovis, as the Clovis CTSA, and the Fresno County Rural Transit Agency (FCRTA) and the FEOC as the Fresno Rural Area CTSA. The Fresno COG has set aside each year, since FY1982-1983, five percent (5%) of Local Transportation Funds (Table 1) for social service transportation. An Operations Program and Budget (OPB) have been prepared for the Fresno Urban CTSA, Clovis CTSA, and the Fresno Rural CTSA. The FY2016-2017 OPB's, is scheduled for adoption on June 29, 2017, document commitments for matching funds from participating social service agencies and defines the types of coordinated/consolidated services to be provided so funds may be released.

Fresno County's CTSA process has been very successful in coordinating metropolitan and rural social service transportation needs. The Fresno COG's latest annual "Transit Productivity Report 2015-2016" indicates the CTSA's continue to provide a significant number of trips throughout Fresno County. An inventory of social service agencies was updated, as part of the development of the Fresno COG's Human Service Coordination Plan, as adopted January 29, 2015. It has assisted in determining if additional social service agencies may be interested in participating in the CTSA process.

Analysis of Proposed Public Transportation Services and Recommended Findings for Local Agencies FY 2017-2018

A. City of Clovis

The City of Clovis contributes funds to the operation of three (3) transit services within its jurisdiction. First, it operates the Clovis CTSA Round Up service on a demand-responsive basis to its elderly and disabled social service clients. Second, it operates Clovis Stageline to serve general public patrons with four (4) coordinated fixed routes; and third, it provides funding to Fresno Area Express (FAX) which operates fixed route service on Route 9 into Clovis.

Inter-city service to Fresno is available on Clovis CTSA's Round Up and Fresno Area Express / Handy-Ride.

Recommendation:

It is recommended the Fresno COG Policy Board find that public transportation needs within the City of Clovis will be reasonably met. Service requirements contained within the Regional Transportation Plan will be satisfied.

B. City of Coalinga

The City of Coalinga, under an inter-agency agreement with the FCRTA, provides intra-city and inter-city service using vehicles owned by the FCRTA. All FCRTA vehicles are lift equipped for elderly and disabled accessibility.

The Coalinga Transit intra-city demand responsive service operates with one (1) vehicle during an approximate eight (8) hour service period Monday through Friday.

Coalinga Transit also provides inter-city fixed route service, with route deviation to pick-up disabled passengers, between Coalinga and Fresno. The vehicle provides one (1) round trip through Pleasant Valley Prison, Huron, Five Points, Lanare, Riverdale, Caruthers, Raisin City, and Easton, during an approximate nine and $\frac{3}{4}$ (9.75) hour period, Monday through Saturday.

Recommendation:

It is recommended the Fresno COG Policy Board find that public transportation needs within the City of Coalinga, Sphere of Influence, and surrounding Area will be reasonably met. Service requirements contained in the Regional Transportation Plan will be satisfied.

C. City of Firebaugh

The FCRTA, under an inter-agency services agreement with the City of Firebaugh continues to contract with Fresno Economic Opportunities Commission (FEOC) as the Rural Consolidated Transportation Service Agency (Rural CTSA) for the provision of transportation services. Demand responsive service within Firebaugh's Sphere of Influence, and surrounding Area is available by a FCRTA's lift equipped vehicle, Monday through Friday for approximately nine and $\frac{3}{4}$ (9.75) hours per day. A second vehicle is available for inter-city trips between Firebaugh and Mendota during an approximate nine (9) hour period, Monday through Friday.

The FCRTA also contracts with the Rural CTSA to operate Westside Transit as a multiple round trip general public commuter service, during eight and a half (8-1/2) hour period, Monday through Friday, using a lift equipped vehicle, which may deviate from its route to pick-up disabled passengers. The service is provided on a scheduled fixed route to serve patrons "between" Firebaugh, Mendota, San Joaquin and surrounding communities, Kerman, and "to" and "from" Fresno.

Recommendation:

It is recommended the Fresno COG Policy Board find that public transportation needs within the City of Firebaugh, its Sphere of Influence, and surrounding area will be reasonably met. Service requirements contained in the Regional Transportation Plan will be satisfied.

D. City of Fowler

The FCRTA, under an inter-agency services agreement with the City of Fowler contracts with the Fresno Economic Opportunities Commission (FEOC) as the Rural Consolidated Transportation Service Agency (Rural CTSA) for the provision of transportation services within its Sphere of Influence and surrounding area. A lift equipped FCRTA vehicle is the community service the area, approximately nine and $\frac{3}{4}$ (9.75) hours per day, Monday through Friday.

The FCRTA also contracts with the Rural CTSA to operate Southeast Transit as a multiple round trip general public commuter service, for approximately eight and a half (8-1/2) hour period, Monday through Friday, using a lift equipped vehicle, which may deviate from its route to pick-up disabled passengers. The service is provided on a scheduled fixed route to serve patrons "between" Kingsburg, Selma, and Fowler and "to" and "from" Fresno.

Recommendation:

It is recommended the Fresno COG Policy Board find that public transportation needs within the City of Fowler, its Sphere of Influence, and surrounding area will be reasonably met. Service requirements contained in the Regional Transportation Plan will be satisfied.

E. City of Fresno

Fresno Area Express (FAX) provides fixed route service seven (7) days-a-week throughout the Fresno-Clovis Metropolitan Area. The City of Clovis and Fresno County financially participate for service to non-Fresno City residents within Fresno Area Express' Service Area. Fresno Area Express contracts with Keolis Transit America for weekday and weekend demand-responsive service on Handy-Ride. This service is oriented toward those who are unable to use the fixed-route service.

Recommendation:

It is recommended the Fresno COG Policy Board find that public transportation needs within the City of Fresno will be reasonably met. Service requirements contained within the Regional Transportation Plan will be satisfied.

F. City of Huron

The FCRTA, under an inter-agency services agreement with the City of Huron contracts with the Fresno Economic Opportunities Commission (FEOC) as the Rural CTSA for the provision of general public transportation service within the Sphere of Influence, and surrounding area utilizing two (2) FCRTA wheelchair accessible modified vehicles. The intra-city services are available, during an approximate eight (8) hour period, Monday through Friday.

The City of Huron continues to provide funding for an inter-city "life-line" service to Coalinga. Three (3) round trips are provided during an eight (8) hour period, Monday through Friday.

Coalinga Transit also provides inter-city fixed route service, with route deviation to pick-up disabled passengers, between Coalinga and Fresno. The vehicle provides one (1) round trip through Pleasant Valley Prison, Huron, Five Points, Lanare, Riverdale, Caruthers, Raisin City and Easton, during an approximate nine and $\frac{3}{4}$ (9.75) hour period, Monday through Saturday.

Recommendation:

It is recommended the Fresno COG Policy Board find that public transportation needs within the City of Huron, its Sphere of Influence, and surrounding area will be reasonably met. Service requirements contained in the Regional Transportation Plan will be satisfied.

G. City of Kerman

The FCRTA, under an inter-agency services agreement with the City of Kerman, provides demand responsive public transportation service with a FCRTA vehicle within its Sphere of Influence and surrounding area using a lift equipped FCRTA vehicle, for approximately eight (8) hours a day, Monday through Friday.

The FCRTA also contracts with the Rural CTSA to operate Westside Transit as a multiple round trip general public commuter service, for approximately eight and a half (8-1/2) hour period, Monday through Friday, using a lift equipped vehicles, which may deviate from its route to pick-up disabled passengers. The service is provided on a scheduled fixed route to serve patrons "between" Firebaugh, Mendota, San Joaquin and surrounding unincorporated communities, and Kerman and "to" and "from" Fresno.

Recommendation:

It is recommended the Fresno COG Policy Board find that public transportation needs within the City of Kerman, its Sphere of Influence, and surrounding area will be reasonably met. Service requirements contained in the Regional Transportation Plan will be satisfied.

H. City of Kingsburg

Two (2) FCRTA wheelchair lift equipped vehicles are available for providing public transportation services to Kingsburg Area residents. These transit services are provided by the Fresno Economic Opportunities Commission (FEOC), as the Rural CTSA, to the City of Kingsburg under an inter-agency services agreement with FCRTA. Service within the Sphere of Influence, and surrounding area, are available on a demand responsive basis during an approximately eight (8) hour service period, Monday through Friday and approximately eight (8) hours on Saturday utilizing just one (1) vehicle.

The FCRTA also contracts with the Rural CTSA to operate Southeast Transit as a multiple round trip general public commuter service, during an approximately eight and a half (8-1/2) hour period, Monday through Friday, using a lift equipped vehicle, which may deviate from its route to pick-up disabled passengers. The service is provided on a scheduled fixed route to serve patrons "between" Kingsburg, Selma, and Fowler and "to" and "from" Fresno.

Recommendation:

It is recommended the Fresno COG Policy Board find that public transportation needs within the City of Kingsburg, its Sphere of Influence, and surrounding area will be reasonably met. Service requirements contained in the Regional Transportation Plan will be satisfied.

I. City of Mendota

The FCRTA, under an inter-agency agreement with the City of Mendota, contracts with the Fresno Economic Opportunities Commission (FEOC), as the Rural CTSA, to provide demand responsive service within its Sphere of Influence and surrounding area using a FCRTA lift equipped vehicle. This service is provided Monday through Friday, for approximately ten (10) hours per day.

Firebaugh Transit has a second vehicle, which is available for inter-city trips between Firebaugh and Mendota during an approximate nine (9) hour period, Monday through Friday.

The FCRTA also contracts with the Rural CTSA to operate Westside Transit as a multiple round trip general public commuter service, during an approximately eight and a half (8-1/2) hour period, Monday through Friday using a lift equipped vehicle, which may deviate from its route to pick-up disabled passengers. The service is provided on a scheduled fixed route to serve patrons "between" Firebaugh, Mendota, San Joaquin and surrounding unincorporated communities, and Kerman and "to" and "from" Fresno.

Recommendation:

It is recommended the Fresno COG Policy Board find that public transportation needs within the City of Mendota, its Sphere of Influence, and surrounding area will be reasonably met. Service requirements contained in the Regional Transportation Plan will be satisfied

J. City of Orange Cove

The FCRTA, under an inter-agency services agreement with the City of Orange Cove contracts with the Fresno Economic Opportunities Commission (FEOC), as the Rural CTSA, for the provision of transportation services. Orange Cove Transit operates a FCRTA lift equipped vehicle on a demand responsive basis within its Sphere of Influence, and surrounding area for approximately ten (10) hours per day, Monday through Friday.

Orange Cove Transit also provides a lift equipped vehicle for inter-city fixed route service. The service is provided on a scheduled fixed route to serve patrons "between" Orange Cove, Reedley, Parlier, Sanger, and "to" and "from" Fresno. Multiple round trips are available each service day. The inter-city service is provided, during an approximately ten (10) hour period, Monday through Friday.

Recommendation:

It is recommended the Fresno COG Policy Board find that public transportation needs within the City of Orange Cove, its Sphere of Influence, and surrounding area will be reasonably met. Service requirements contained in the Regional Transportation Plan will be satisfied.

K. City of Parlier

Under an inter-agency services agreement, the City of Parlier and FCRTA currently contracts for transportation services with the Fresno Economic Opportunities Commission (FEOC), as the Rural CTSA. Parlier Transit operates a lift equipped demand responsive service within its Sphere of Influence, and surrounding area using a wheelchair lift equipped FCRTA vehicle. Service is currently provided, during an approximate eight (8) hour period, Monday through Friday.

The FCRTA also contracts with the Rural CTSA to operate Orange Cove Transit as a multiple round trip general public commuter service, during an approximately ten (10) hour period, Monday through Friday, using a lift equipped vehicle, which may deviate from its route to pick-up disabled passengers. The service is provided on a scheduled fixed route to serve patrons "between" Orange Cove, Reedley, Parlier, and Sanger and "to" and "from" Fresno.

Recommendation:

It is recommended the Fresno COG Policy Board find that public transportation needs within the City of Parlier, its Sphere of Influence, and surrounding area will be reasonably met. Service requirements contained in the Regional Transportation Plan will be satisfied.

L. City of Reedley

The City of Reedley, through an inter-agency services agreement with the FCRTA, provides demand responsive public transportation within its Sphere of Influence and surrounding area, using four (4) vehicles on an eight (8) hour staggered basis during an approximate eight (8) hour service period, Monday through Friday, and one (1) vehicle on Saturdays during an approximate eight (8) hour period.

The FCRTA also contracts with the Rural CTSA to operate Orange Cove Transit as a multiple round trip general public commuter service, during an approximately ten (10) hour period, Monday through Friday using a lift equipped vehicle, which may deviate from its route to pick-up disabled passengers. The service is provided on a scheduled fixed route to serve patrons "between" Orange Cove, Reedley, Parlier, and Sanger and "to" and "from" Fresno.

Recommendation:

It is recommended the Fresno COG Policy Board find that public transportation needs within the City of Reedley, its Sphere of Influence, and surrounding area will be reasonably met. Service requirements contained in the Regional Transportation Plan will be satisfied.

M. City of Sanger

To provide public transportation service within the Sanger Sphere of Influence and the surrounding area, the FCRTA, under an inter-agency services agreement, with the City of Sanger contracts with Fresno Economic Opportunities Commission (FEOC), as the Rural CTSA. Two (2) wheelchair accessible FCRTA vehicles offer service in Sanger. The vehicles provide staggered service during an approximate eight (8) hour period and one (1) vehicle provides service during an eleven and half (11.5) hour period, Monday through Friday, and one (1) vehicle during an eight (8) hour period on Saturday.

FCRTA also contracts with the Rural CTSA to operate Orange Cove Transit as a multiple round trip general public commuter service, during approximate ten (10) hour period, Monday through Friday, using a lift equipped bus, which may deviate from its route to pick-up disabled passengers. The service is provided on a scheduled fixed route to serve patrons "between" Orange Cove, Reedley, Parlier, and Sanger and "to" and "from" Fresno.

An additional vehicle began providing service between Sanger and Reedley College in September of 2014 to support a new training program to address a critical concern by manufacturers in Sanger who have been unsuccessful at finding skilled workers to employ and residents in Sanger who are underemployed or unemployed. The new program is being designed in cooperation with the new President of Reedley College and the manufacturing companies. One (1) vehicle provides route service during a ten (10) hour period, Monday through Friday.

Recommendation:

It is recommended the Fresno COG Policy Board find that public transportation needs within the City of Sanger, its Sphere of Influence, and surrounding area will be reasonably met. Service requirements contained in the Regional Transportation Plan will be satisfied.

N. City of San Joaquin

The FCRTA, under an inter-agency agreement with the City of San Joaquin, contracts with the Fresno Economic Opportunities Commission (FEOC), as the Rural CTSA, for demand responsive Intra-City service within their Sphere of Influence and surrounding area. Inter-community service is also provided between the unincorporated communities of: Cantua Creek, El Porvenir, Halfway, Three Rocks, and Tranquility. Inter-City service to Kerman is also available. These services are provided, during a ten (10) hour period, Monday through Friday using an FCRTA lift equipped vans.

The FCRTA also contracts with the Rural CTSA to operate Westside Transit as a multiple round trip general public commuter service, during approximate eight and a half (8-1/2) hour period, Monday through Friday, using a lift equipped vehicle, which may deviate from its route to pick-up disabled passengers. The service is

provided on a scheduled fixed route to serve patrons "between" Firebaugh, Mendota, San Joaquin and surrounding unincorporated communities, and Kerman and "to" and "from" Fresno.

Recommendation:

It is recommended the Fresno COG Policy Board find that public transportation needs within the City of San Joaquin, its Sphere of Influence, and the surrounding area with its identified unincorporated communities will be reasonably met. Service requirements contained in the Regional Transportation Plan will be satisfied.

O. City of Selma

The FCRTA, under an inter-agency agreement with the City of Selma, contracts with the Fresno Economic Opportunities Commission (FEOC), as the Rural CTSA, for demand responsive and fixed route Intra-City service within their Sphere of Influence and surrounding area.

This service utilizes four (4) FCRTA wheelchair accessible vehicles. It operates four (4) vehicles on a demand responsive basis for eight (8) hours each on a staggered basis, and one (1) for four (4) hours for lunch time driver relief, Monday through Friday, during an approximate eight (8) hours service day. Saturday demand responsive services are provided with a single (1) vehicle during an approximate eight (8) hour service period.

The FCRTA also contracts with the Rural CTSA to operate Southeast Transit as a multiple round trip general public commuter service, during approximate eight and a half (8-1/2) hour period, Monday through Friday using a lift equipped vehicle, which may deviate from its route to pick-up disabled passengers. The service is provided on a scheduled fixed route to serve patrons "between" Kingsburg, Selma, and Fowler and "to" and "from" the Fresno-Clovis Metropolitan Area (FCMA).

Recommendation:

It is recommended the Fresno COG Policy Board find that public transportation needs within the City of Selma, its Sphere of Influence, and surrounding Area will be reasonably met. Service requirements contained in the Regional Transportation Plan will be satisfied.

P. Fresno County

Fresno County financially participates through the Fresno County Rural Transit Agency for provision of service to unincorporated area residents within the Spheres of Influence and surrounding areas of the thirteen (13) rural cities and two dozen unincorporated communities situated on established fixed routes.

Fresno County also provides the funding for six (6) other unincorporated area transit services.

Auberry Transit is provided, through an inter-agency service agreement between the FCRTA and the Fresno Economic Opportunities Commission (FEOC), as the Rural CTSA. The service area includes the communities of: Alder Springs, Auberry, New Auberry, the Big Sandy Indian Rancheria, Burrough Valley, Cold Springs Indian Rancheria, Jose Basin, Marshall Station, Meadow Lakes, Mile High, Prather, Sycamore, and Tollhouse. A lift equipped vehicle provides, approximately six (6) hours of service per day, Monday through Friday. A second Auberry Transit vehicle is to provide “life-line” inter-city service from the foothill communities and through Friant and the Table Mountain Indian Rancheria to the Fresno-Clovis Metropolitan Area, one (1) day a week during an eight (8) hour service period.

Del Rey Transit operates as a general public demand responsive service. The Rural CTSA continues to fund the service four (4) hours per service day and Fresno County TDA monies fund the remaining four (4) hours. The service is under contract for driver services through the Rural CTSA and continues to be available during an approximate eight (8) hour period Monday through Friday. The operation will continue to maintain priority service to seniors attending the mid-day Hot Meal Nutrition Program. The service transports passengers within the community on a shared ride basis; arranges passenger grouping for trips to Sanger; and transfers passengers in Sanger to access Orange Cove Transit for service to Fresno, Parlier, Reedley, and Orange Cove.

Dinuba Connection is in its fourth (5th) year of service. In cooperation with the FCRTA, the City of Dinuba (in Tulare County) provides an inter-County service, referred to as the Dinuba Connection, between Dinuba and Reedley (in Fresno County). It allows Dinuba residents to travel from their City and its Vocational Training Center to the Adventist Medical Center (for on-the-job training) and to attend Reedley College. Eastern Fresno County residents travel to regional retail and entertainment centers in Dinuba. The service has proven to be very successful. The operations encourage transfers between Reedley Transit’s Intra-City services and Orange Cove Transit’s Inter-City services, to facilitate connectivity between Orange Cove, Reedley, Parlier, Sanger and Fresno. Both entities will continue to utilize a portion of their locally approved half cent sales tax (Measure R in Tulare County and Measure C in Fresno County) to continue to split the costs of this transit expansion program

Laton Transit continues to be provided by the FCRTA through an ongoing inter-agency services agreement with Kings Area Rural Transit (KART). Round trip, inter-community service between the unincorporated Community of Laton and the City of Hanford, in Kings County, is available Monday through Friday. An existing inter-County service by KART from Hanford through Laton and then Selma (Kaiser Clinic) and Hospitals in Fresno and the Central Valley Children’s Hospital in Madera County is provided Monday through Friday.

New Freedom Transit is a service that has been talked about for several years. Staff was concerned that Americans with Disabilities Act (ADA) regulations

stipulated that the maximum wheelchair lift capacity was not to exceed 600 pounds. Staff was made aware that an obese person in a powered wheelchair with two (2) batteries, and related supportive equipment with a back-pack for personal items could easily exceed the weight limit.

There have been tragic incidents where individuals could not be transported for medical appointments, etc. Staff received Grant funding to purchase two (2) vehicles that could expressly address the need. FCRTA completed a procurement of low floor vehicles, with kneeling suspension systems and a ramp that is rated at 1,000 pounds. There are up to three (3) wheelchair locations with multiple tie down configurations at the front of the vehicle to accommodate the service.

Also purchased with another Grant were two (2) vehicles with up to six (6) wheelchair locations that may be accessed independent of each other. The ability to transport that many wheelchairs at one-time will be of benefit when a group wants to go to a common location in the County. It will also allow the FCRTA to provide emergency services in the event of a natural or man-made disaster.

The services are programmed to begin after July 1, 2017, as our marketing and outreach effort take place.

Rural Transit between remote areas of Fresno County has been mentioned in the Regional Transportation Plan and Rural Short Range Transit Plan (SRTP) for many years. The Measure-C Expenditure Plan referenced the concept for funding and implementation. Service beyond the current transit service areas associated with incorporated cities has been difficult to justify. Four (4) vehicles were purchased to facilitate the operation of three (3) in regular services, Monday through Friday, with the fourth (4th) reserved as a back-up vehicle. The adopted Rural SRTP reflects the demand responsive operation to be available on a twenty-four (24) hour prior reservation basis. Transfers to existing operations have eliminated service duplications. The FCRTA continues to contract with Fresno Economic Opportunities Commission (FEOC) as the Rural Consolidated Transportation Service Agency (Rural CTSA) for the provision of this transportation services.

Shuttle Transit is to address another transit need. For many years, it has become evident that when riders from rural Cities arrive in Fresno they have problems utilizing the fixed route services of Fresno Area Express (FAX) to get to their destinations, conduct their business and return back downtown to catch their return bus back to their respective rural City. Frail elderly and disabled have significant problems attempting to qualify as a user of the Handy Ride services. Those wanting to get to an employment opportunity, educational institution, training program, medical appointment or other facility learn that it is nearly impossible to rely on public transportation.

The Federal Transit Administration (FTA) recognized the problem nationwide, and sought to address the matter. They created another Program that is called Job Access / Reverse Commute (JARC). Initially it sought competitive applications, and selected a few for partial funding for a one (1) year demonstration period. The applicant was responsible for the funding in subsequent years. It really was not

attractive to small rural operators with very limited funding in the first place.

With the passage of Measure-C, the FCRTA has an opportunity to implement a supportive program. The FCRTA has four (4) inter-City subsystems that provide service to the Fresno Metropolitan Area. They include: Coalinga Transit (from Coalinga, Huron, Five Points, Lanare, Riverdale, Caruthers, Raisin City, and Easton); Orange Cove Transit (from Orange Cove, Reedley, Parlier, and Sanger); Southeast Transit (from Kingsburg, Selma, and Fowler); and Westside Transit (from Firebaugh, Mendota, Kerman, with connections from San Joaquin).

The Shuttle services are intended to meet the inter-City buses as they arrive in Fresno. The fares would be the same as FAX, \$1.25 per one-way trip. The riders could call the Centralized Dispatch phone number 1-800-325-7433 to arrange service. The FCRTA has four (4) vehicles, three (3) primary and one (1) back-up. The service can begin after July 1st, and of course it would be subject to minimum performance criteria to warrant continuation.

Staff intends to promote the new services with rural residents who want to come to Fresno. The service began in July of 2015.

Recommendation:

It is recommended the Fresno COG Policy Board find that public transportation needs within the unincorporated portions of the County of Fresno will be reasonably met. Service requirements contained in the Regional Transportation Plan will be satisfied.

Additional Information

It should be noted additional transit needs are being met through three (3) other programs, which have been implemented with Measure – C funds. The Fresno COG administers the programs:

- Carpooling - A subsidized carpooling program is available for individuals willing to share rides with others. A computerized program may assist individuals in making successful contacts to form successful arrangements to conveniently share rides.
- Commuter Vanpooling – A subsidized vanpooling program is available for a group of individuals who may have common interests in commuting for employment or schooling at City Colleges and Universities. Several commercial entities have complete programs to provide vans ranging from seven (7) to fifteen (15) passenger capacities. A lead and back-up driver volunteer to make arrangements to transport the group as needed. The vehicle, fuel, maintenance, and insurance are covered. Participants share in a portion of the costs. Several hundred vehicles are currently in operation, and more are being formed on a regular basis.

- Farm Labor Vanpooling – A subsidized farm labor vanpooling program facilitates group transportation to field and packing facilities. The program is flexible to meet the seasonal needs of the workers, originating in Fresno County. Fifteen (15) passenger vans accommodate seven (7) to fifteen (15) individuals. A lead and back-up driver volunteer to make arrangements to transport the group as needed. The vehicle, fuel, maintenance, and insurance are covered. Participants share in a portion of the costs. Several hundred vehicles are currently in operation, and more are being formed on a regular basis.

Individuals and groups desiring to know more about these programs should call 559-441-RIDE (7433) or contact www.valleyrides.com for more information.

Demographic Information

Transit Dependent Groups

Per the Transportation Development Act, Unmet Transit Needs findings must include an annual assessment of the size and location of identifiable groups likely to be transit dependent. Including but not limited to, the elderly, the disabled, including individuals eligible for paratransit and other special transportation services pursuant to Section 12143 of Title 42 of the United States Code, and persons of limited means, including, but not limited to, recipients under the CalWORKs program.

For the purposes of this document:

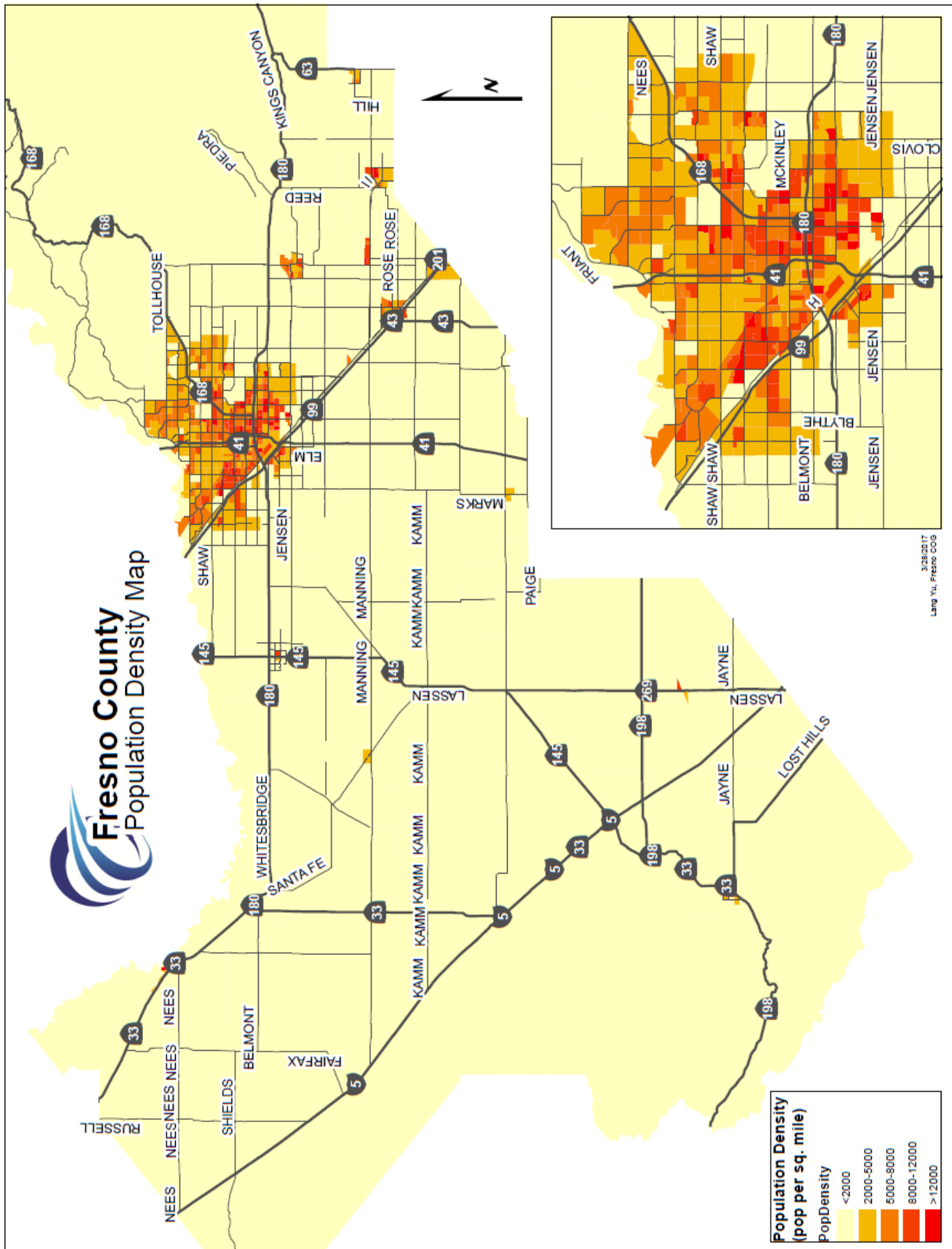
- Elderly are considered to be individual's age 65 years old and older.
- The terms "disability" refers to persons who because of physical or mental impairment are unable to drive automobiles or use public transit which is not specifically tailored to meet their needs.
- Persons of limited means are considered having incomes below the poverty threshold as defined by the federal government.

Demographic Data - Charts and Highlights

The determination of the size and location of identifiable groups likely to be "transit dependent" is based on the American Community Surveys, 2010 Census, and other pertinent data. The demographic data relevant to determining unmet transit needs in Fresno County is presented in the form of tables and maps.

The American Community Survey replaced the decennial census long form in 2010. The long-form previously collected decennially, will now collect detailed questions about socioeconomic and housing characteristics on an annual basis. The function of the decennial census will be to provide counts of people for the purpose of congressional apportionment and legislative redistricting. The primary purpose of the ACS is to measure the changing social and economic characteristics of the U.S. population. The use of the ACS data in this chapter will provide "snapshots" of our region's socioeconomic characteristics. The decision to select one-year, three-year, or five-year ACS "snapshots" is dependent on whether the intent is to reflect the most current data (e.g., one-year ACS) or a statistically more accurate "snapshot" (e.g., lower margin of error) over a larger period of time.

Fresno County Population Density



The most rapid population increase between the 2000 and 2010 Census occurred in the City of Kerman with over a 67% growth. Other western Fresno County cities with significant increases were Coalinga (45%), Mendota (44%), and Firebaugh (40%). The metropolitan area of Fresno and Clovis also had significant growth increases of 19% and 51% respectively.

The City of Clovis now has a population in excess of 100,000 people. Pursuant to Senate Bill 716 (enacted 2009), cities with a population of 100,000 or more within a county that has a population of 500,000 or more will be required to expend 100% of the Local Transportation Funds (LTF) apportionment for public transit purposes. The City of Clovis has already been compiling with this requirement.

Population forecasts suggest that none of the other incorporated cities in Fresno County will exceed 100,000 in the next 20 years and therefore will be exempt from the provisions of Senate Bill 716. The California Department of Finance annual city and county population estimates will be used to identify when the population threshold has been met. SB 716 represents a fundamental change in the manner in which public transit will be financed in the future.

Table 2
Total Population and Percent Change

| Planning Area | Population | | | % Change | % Annual Change |
|---------------------|----------------|----------------|----------------|--------------|-----------------|
| | 2000 | 2010 | 2015 (ACS) | 2010 - 2015 | 2000 - 2015 |
| City of Clovis | 66,468 | 95,631 | 100,437 | 5.03% | 51.11% |
| City of Coalinga | 11,668 | 13,380 | 16,940 | 26.61% | 45.18% |
| City of Firebaugh | 5,743 | 7,549 | 8,084 | 7.09% | 40.76% |
| City of Fowler | 3,979 | 5,570 | 6,006 | 7.83% | 50.94% |
| City of Fresno | 427,652 | 494,665 | 510,451 | 3.19% | 19.36% |
| City of Huron | 6,306 | 6,754 | 6,792 | 0.56% | 7.71% |
| City of Kerman | 8,551 | 13,544 | 14,285 | 5.47% | 67.06% |
| City of Kingsburg | 9,199 | 11,382 | 11,681 | 2.63% | 26.98% |
| City of Mendota | 7,890 | 11,014 | 11,402 | 3.52% | 44.51% |
| City of Orange Cove | 7,722 | 9,078 | 9,565 | 5.36% | 23.87% |
| City of Parlier | 11,145 | 14,494 | 14,870 | 2.59% | 33.42% |
| City of Reedley | 20,756 | 24,194 | 25,092 | 3.71% | 20.89% |
| City of San Joaquin | 3,270 | 4,001 | 4,008 | 0.17% | 22.57% |
| City of Sanger | 18,931 | 24,270 | 24,700 | 1.77% | 30.47% |
| City of Selma | 19,444 | 23,219 | 24,017 | 3.44% | 23.52% |
| County of Fresno | 170,683 | 171,705 | 168,419 | -1.91% | -1.33% |
| Total | 799,407 | 930,450 | 956,749 | 2.83% | 19.68% |

Table 4 presents 2011-2015 American Community Survey (ACS 5-year) data on population, by age and income characteristics. This data is important to this analysis because studies have shown that age and income have a high correlation with automobile usage and transit dependency. Persons age 65 and over are separated as a subset of the total population figures. In some jurisdictions, these individuals become eligible for transit services solely based on their age. In others, they qualify for reduced fares because of their age. In either case, they are recognized as a select group of people who may have special transportation needs met through public transportation.

Poverty statistics in ACS products adhere to the standards specified by the Office of Management and Budget in Statistical Policy Directive 14. The Census Bureau uses a set of dollar value thresholds that vary by family size and composition to determine who is in poverty. Further, poverty thresholds for people living alone or with nonrelatives (unrelated individuals) vary by age (under 65 years or 65 years and older). The poverty thresholds for two-person families also vary by the age of the householder. If a family's total income is less than the dollar value of the appropriate threshold, then that family and every individual in it are considered to be in poverty. Similarly, if an unrelated individual's total income is less than the appropriate threshold, then that individual is considered to be in poverty.

Table 4
Age and Income, Year 2015

| Jurisdiction | Population 2015 | Persons: Age 65 + | % Total Pop. | Persons: Low Income | % Total Pop. | Persons: Age 65+ & Low Income | % Total Pop. |
|---------------------|--------------------|----------------------|-----------------|---------------------------|-----------------|--|-----------------|
| City of Clovis | 100,437 | 11,758 | 11.7% | 13,731 | 13.7% | 800 | 0.8% |
| City of Coalinga | 16,940 | 1,116 | 6.6% | 2,857 | 16.9% | 84 | 0.5% |
| City of Firebaugh | 8,084 | 409 | 5.1% | 2,708 | 33.5% | 63 | 0.8% |
| City of Fowler | 6,006 | 661 | 11.0% | 1,505 | 25.1% | 28 | 0.5% |
| City of Fresno | 510,451 | 50,349 | 9.9% | 149,592 | 29.3% | 6,732 | 1.3% |
| City of Huron | 6,792 | 451 | 6.6% | 2,432 | 35.8% | 175 | 2.6% |
| City of Kerman | 14,285 | 1,119 | 7.8% | 3,646 | 25.5% | 100 | 0.7% |
| City of Kingsburgh | 11,681 | 1,481 | 12.7% | 2,065 | 17.7% | 117 | 1.0% |
| City of Mendota | 11,402 | 680 | 6.0% | 5,255 | 46.1% | 180 | 1.6% |
| City of Orange Cove | 9,565 | 477 | 5.0% | 5,069 | 53.0% | 127 | 1.3% |
| City of Parlier | 14,870 | 980 | 6.6% | 6,251 | 42.0% | 238 | 1.6% |
| City of Reedley | 25,092 | 2,792 | 11.1% | 6,616 | 26.4% | 264 | 1.1% |
| City of San Joaquin | 4,008 | 179 | 4.5% | 2,171 | 54.2% | 97 | 2.4% |
| City of Sanger | 24,700 | 2,578 | 10.4% | 5,671 | 23.0% | 561 | 2.3% |
| City of Selma | 24,017 | 2,613 | 10.9% | 5,793 | 24.1% | 395 | 1.6% |
| Unincorporated Area | 168,419 | 26,472 | 15.7% | 36,825 | 21.9% | 2,813 | 1.7% |
| Total | 956,749 | 104,115 | 10.9% | 252,187 | 26.4% | 12,774 | 1.3% |

Table 5 provides data on individuals with disabilities by gender and age. This information is from the 2011-2015 ACS data includes non-institutionalized persons, age 5 and older, who have a "disability." Individuals were asked if they, or others in the household, had a health condition that has lasted for 6 or more months which makes it difficult to go outside of the home alone. Persons that have such a difficulty as a result of a health condition are said to have a mobility limitation. Increased public transportation would be an asset to those who have a mobility limitation.

Table 5
Gender By Age By Disability

| Fresno County | Estimate | % over Total | Fresno County | Estimate | % over Total |
|------------------------------------|----------|--------------|----------------------------|----------|--------------|
| Total Population | 956,749 | 100.0% | Total Population | 956,749 | 100.0% |
| Male | 477,316 | 49.9% | Female | 479,433 | 50.1% |
| Under 5 | 40,416 | 4.2% | Under 5 | 39,027 | 4.1% |
| With a Disability | 206 | 0.0% | With a Disability | 237 | 0.0% |
| No Disability | 40,210 | 4.2% | No Disability | 38,790 | 4.1% |
| 5 to 17 | 101,033 | 10.6% | 5 to 17 | 96,999 | 10.1% |
| With a Disability | 6,253 | 0.7% | With a Disability | 3,587 | 0.4% |
| No Disability | 94,780 | 9.9% | No Disability | 93,412 | 9.8% |
| 19 to 64 | 281,499 | 29.4% | 19 to 64 | 284,765 | 29.8% |
| With a Disability | 31,805 | 3.3% | With a Disability | 32,217 | 3.4% |
| No Disability | 249,694 | 26.1% | No Disability | 252,548 | 26.4% |
| 65+ | 45,096 | 4.7% | 65+ | 56,518 | 5.9% |
| With a Disability | 18,985 | 2.0% | With a Disability | 23,724 | 2.5% |
| No Disability | 26,111 | 2.7% | No Disability | 32,794 | 3.4% |
| Total Male with Disability | 57,249 | 6.0% | Total Male with Disability | 59,765 | 6.2% |
| Total Population with a Disability | 117,014 | 12.2% | | | |

| Fresno County | Estimate | % over Total | Fresno County | Estimate | % over Total |
|-------------------|----------|--------------|-------------------|----------|--------------|
| Total Population | | | Total Population | | |
| Male | | #VALUE! | Female | | #VALUE! |
| Under 5 years | | #VALUE! | Under 5 years | | #VALUE! |
| With a Disability | | #VALUE! | With a Disability | | #VALUE! |
| No Disability | | #VALUE! | No Disability | | #VALUE! |
| 5 to 17 years | | #VALUE! | 5 to 17 years | | #VALUE! |
| With a Disability | | #VALUE! | With a Disability | | #VALUE! |
| No Disability | | #VALUE! | No Disability | | #VALUE! |

| | | | | | |
|---|---|---------|--|---|---------|
| 19 to 64 years | | #VALUE! | 19 to 64 years | | #VALUE! |
| With a Disability | | #VALUE! | With a Disability | | #VALUE! |
| No Disability | | #VALUE! | No Disability | | #VALUE! |
| 65+ | | #VALUE! | 65+ | | #VALUE! |
| With a Disability | | #VALUE! | With a Disability | | #VALUE! |
| No Disability | | #VALUE! | No Disability | | #VALUE! |
| Total Male Population with a Disability | 0 | #VALUE! | Total Female Population with a Disability* | 0 | #VALUE! |
| Total Population with a Disability* | 0 | #VALUE! | | | |

Table 6 expands on the number of individuals in Fresno County between the ages of 19 and 64 by their disability and employment status. The 2011-2015 ACS data identifies that 566,264 residents are between the ages of 19 and 64 and that approximately 64,022 (6.7 percent) have a disability. Of those with a disability, 29.4 percent are employed, 8.5 percent are unemployed, and 59.4 percent are not in the workforce. Those residents without a disability make up 88.7 percent of those between the ages of 18 and 64. Of this group 65.4 percent are employed, 8.9 percent are unemployed, and 20.1 percent are not in the workforce.

Table 6
Employment Status By Disability

| Population 19 to 64 | Number | % of Pop |
|----------------------------|---------------|-----------------|
| Total | 566,264 | 59.2% |
| With a Disability | 64,022 | 6.7% |
| Employed | 18,812 | 29.4% |
| Unemployed | 5,462 | 8.5% |
| Not in Labor Force | 38,047 | 59.4% |
| No Disability | 502,242 | 88.7% |
| Employed | 328,617 | 65.4% |
| Unemployed | 44,520 | 8.9% |
| Not in Labor Force | 101,181 | 20.1% |

Fresno COG's definition of transit dependent focuses on individuals who, by virtue of their age, income, or disability, are not adequately served by the automobile. Information from the last available version of a summary from Caltrans entitled "Travel and Related Factors in California" was used as a foundation for identifying the incidence of individuals that are transportation-dependent.

According to the California Department of Motor Vehicles (DMV), in 2015 there were 561,764 driver licenses issued in Fresno County. This number represents approximately 74 percent of the population age 16 years and older. This means that approximately 26 percent of eligible drivers in Fresno County did not have a driver's license. In 2011, there were 515,837 licensed drivers, approximately 75 of the population 16 and older. The percentage of eligible drivers that do not have driver's licenses remained relatively flat between 2011 and 2015.

Overall, this information reflects the slight decrease in licensed drivers. The decrease could be contributed to many factors such as birth and death rate, changes in family income, disabled individuals, migration of residents in or out of the county, or the availability of public transportation. Ultimately, the need for more public transportation continues to be necessary.

Table 7
Licensed Drivers in Fresno County

| Age | Population 2015 | % of Total Pop |
|------------|------------------------|-----------------------|
| 0-15 | 247,798 | 25.9% |
| 16-18 | 29,659 | 3.1% |
| 18+ | 679,292 | 71.0% |
| All | 956,749 | 100.0% |

Table 9
Occupied Household / Vehicles in
Fresno County, Year 2015

| | |
|--|---------|
| Total Housing Units | 321,955 |
| Total Occupied Housing Units | 296,305 |
| Average # of Occupants | 1.81 |
| No. of Vehicles in Fresno County | 522,264 |
| Average # of Vehicles per Household | 1.62 |
| Average # of Drivers per Household | 1.74 |

Attachment A

Social Services Transportation Advisory Council Membership List Updated April 2017

| Potential Transit User 60 Years of Age or Older (minimum of 1) | | | |
|--|---------------------------------------|--------------|-------------------|
| Appointment | Resident of/Geographic Representation | Term Expires | Ethnic Background |
| Terri Staples | Fresno/Fresno County | 5-2017 | Caucasian |

| Representatives of the Local Social Service Providers for Seniors (minimum of 2) | | | |
|--|---------------------------------------|--------------|-------------------|
| Appointment | Resident of/Geographic Representation | Term Expires | Ethnic Background |
| Adam Vinogradoff, FMAAA | Fresno/Fresno County | 6-2018 | Caucasian |
| Harpreet Kooner, Fresno County Public Works | Fresno/Fresno County | 5-2019 | Asian-Indian |

| Potential Transit User Who Is Disabled (minimum of 1) | | | |
|---|---------------------------------------|--------------|-------------------|
| Appointment | Resident of/Geographic Representation | Term Expires | Ethnic Background |
| Carlos Duarte, FAX | Fresno/Fresno County | 3-2018 | Hispanic |

| Representative of the Local Social Service Provider for Disabled (minimum of 2) | | | |
|---|---------------------------------------|--------------|-------------------|
| Appointment | Resident of/Geographic Representation | Term Expires | Ethnic Background |
| Vidal Medina, Resources for Independence, Central Valley | Fresno/Fresno County | 5-2017 | Hispanic |
| Bill Hyatt, CVRC | Fresno/Fresno County | 6-2018 | Caucasian |

| Representative of a Local Social Service Provider for Persons of Limited Means (minimum of 1) | | | |
|---|---------------------------------------|--------------|-------------------|
| Appointment | Resident of/Geographic Representation | Term Expires | Ethnic Background |
| Stephenie Fredrickson, League of Women Voters | Fresno/Fresno County | 6-2018 | Caucasian |

| Representatives from the Local Consolidated Transportation Service Agency (minimum of 2) | | | |
|--|---------------------------------------|--------------|-------------------|
| Appointment | Resident of/Geographic Representation | Term Expires | Ethnic Background |
| Shonna Halterman, Clovis Transit | Clovis/Fresno County | 9-2018 | Caucasian |
| Gary Joseph, FEOC/CTSA | Fresno/Fresno County | 6-2018 | Caucasian |
| Moses Stites, FCRTA | Fresno/Fresno County | 3-2018 | Hispanic |
| Judith Nishi, FAX | Sanger/Fresno County | 6-2018 | Asian American |

| Representatives of General Public, who used Public Transit | | | |
|--|---------------------------------------|--------------|-------------------|
| Appointment | Resident of/Geographic Representation | Term Expires | Ethnic Background |
| Dottie Wright | Fresno/Fresno County | 2-2018 | Caucasian |
| | | | |

| Acronym | Agency Name |
|----------------|---|
| FMAAA | Fresno Madera Area Agency on Aging |
| RICV | Resources for Independence, Central Valley |
| UCP | United Cerebral Palsy |
| ET&A | Fresno County Department of Employment & Temporary Assistance |
| FEOC | Fresno Economic Opportunities Commission |
| CTSA | Consolidated Transportation Service Agency |
| FCRTA | Fresno County Rural Transit Agency |
| FAX | Fresno Area Express |
| VAC CA HCS | Veterans Administration Central California Health Care System |
| FCHSS | Fresno County Health and Social Services |
| NFB | National Federation of the Blind |
| CCNF | Central California Nikkie Foundation |

Attachment B-1
Unmet Transit Needs Request for Comments Letter



2035 Tulare St., Ste. 201 tel 559-233-4148
Fresno, California 93721 fax 559-233-9645

www.fresnocog.org

January 27, 2017

MEMORANDUM

TO: Interested Individuals and/or Organizations
FROM: BILL HYATT, Chairman
Social Services Transportation Advisory Council

SUBJECT: DO YOU NEED MORE PUBLIC TRANSIT?

If you use buses or vans in Fresno County, or if you know people or clients in your organization who depend on buses or other forms of public transit, please read this announcement and post the enclosed flyer.

Every year, the SSTAC, which is part of the Fresno Council of Governments (Fresno COG), tries to find out whether residents of Fresno County have enough public transportation to get where they need to go. The SSTAC is part of the Fresno COG, and represents social service agencies, transit operators, and transit riders.

If you or others you know are aware of a specific transit need that is not currently being met by one of the existing public transit agencies, social service agencies, or a private sector operator, PLEASE LET US KNOW!

You can tell us in two ways – send a letter or come to a meeting. If you send a letter, please mail or fax it to:

Bill Hyatt, SSTAC Chairman
Central Valley Regional Center, Inc.
4615 North Marty
Fresno, CA 93722 Fax no: (559) 276-4360

Three meetings will be held during February 2017:

Tuesday, February 14, 2017 – 5:30pm – Fresno-Clovis Metropolitan Area

Clovis Senior Center
850 Fourth Street
Clovis, CA 93612

Wednesday, February 15, 2017 – 5:30pm – West Side of Fresno County

San Joaquin Senior Center
21991 W. Colorado
San Joaquin, CA 93660

City of Clovis
City of Coalinga
City of Firebaugh
City of Fowler
City of Fresno
City of Huron
City of Kerman
City of Kingsburg
City of Mendota
City of Orange Cove
City of Parlier
City of Reedley
City of San Joaquin
City of Sanger
City of Selma
County of Fresno

Thursday, February 16, 2017 – 5:30pm – East Side of Fresno County

Orange Cove Community Center
1705 Anchor Dr.
Orange Cove, CA 93646

The meeting rooms and restrooms are ADA accessible. Representatives or individuals with disabilities should contact Fresno COG (559-233-4148), at least 3 days in advance, to request auxiliary aids and/or translation services necessary to participate in the public meeting.

Here is the information needed to help the SSTAC and Fresno Council of Governments decide whether it would be reasonable to increase transit service:

1. Where new service is needed, and where trips would begin and end.
2. When and how often buses or vans would need to operate.
3. Description of the individuals who need the service. Include age group, financial constraints, and whether they have disabilities that would require special services.

For your information, the Fresno Council of Governments (Fresno COG) is the Regional Transportation Planning Agency, and is responsible for ensuring that public transportation needs are being "reasonably met". "Reasonable" means there is enough money to provide the service AND there are enough individuals to use the new service.

Every year, on behalf of the Fresno COG, the SSTAC contacts hundreds of organizations and individuals to determine whether transit needs are being reasonably met. After gathering information, the SSTAC recommends to the Fresno COG Policy Board whether there are any unmet transit needs that are reasonable to meet.

If you have questions about transit services in your area, please contact one of the staff representatives listed below:

- City of Fresno – Mr. Jeff Long, Senior Regional Planner (5659) 621-1436
- City of Clovis – Ms. Amy Hance, Transit Supervisor, (559) 324-2769
- Rural Communities – Mr. Moses Stites, FCRTA General Manager, (559) 233-6789
- Social Services Programs – Mr. Gary Joseph, CTSA Transit System Director (559) 486-6594

We cannot make the best decisions about increasing transit service unless we hear from the people who use transit in Fresno County. **Please respond and please spread the word!**

Thank you in advance for your assistance and cooperation.

Bill Hyatt, Chairman
(559) 276-4341
BHyatt@cvrc.org

Attachment B-2
Unmet Transit Needs Request for Comments Letter in Spanish



2035 Tulare St., Ste. 201 tel 559-233-4148
Fresno, California 93721 fax 559-233-9645

www.fresnocog.org

27 de enero de 2017

MEMORÁNDUM

PARA: Personas y/o Organizaciones Interasadas
DE: BILL HYATT, Presidente
Consejo Consultivo de Transporte de Servicios Sociales
TÉMA: **¿NECESITA MÁS TRANSPORTE PÚBLICO?**

Si utiliza autobuses o vans en el Condado de Fresno, o si conoce a personas o clientes en su organización que dependen de autobuses y otras formas de transporte público, por favor lea este anuncio y publique el volante adjunto.

Cada año, el SSTAC, que forma parte del Consejo de Gobiernos de Fresno (Fresno COG), intenta averiguar si los residentes del Condado de Fresno tienen suficiente transporte público para llegar a donde necesitan ir. El SSTAC es parte de Fresno COG y representa a agencias de servicios sociales, operadores de transporte y pasajeros de tránsito.

Si usted o conocidos suyos saben de alguna necesidad de tránsito específica que no se está cumpliendo actualmente por una de las agencias existentes de transporte público, agencias de servicios sociales, o un operador del sector privado, POR FAVOR, DEJENOS SABER! Nos puede decir de dos maneras – enviar una carta o venga a una junta. Si usted envía una carta, por favor mándela por correo o fax a:

Bill Hyatt, SSTAC Chairman
Central Valley Regional Center, Inc.
4615 North Marty
Fresno, CA 93722 no. de Fax: (559) 276-4360

Se realizarán tres reuniones durante Febrero de 2017:

Martes, Febrero 14, 2017 – 5:30pm – Fresno-Clovis Área Metropolitana

Clovis Senior Center
850 Fourth Street
Clovis, CA 93612

Miércoles, Febrero 15, 2017 – 5:30pm – Lado Oeste del Condado de Fresno

San Joaquin Senior Center
21991 W. Colorado
San Joaquin, CA 93660

City of Clovis
City of Coalinga
City of Firebaugh
City of Fowler
City of Fresno
City of Huron
City of Kerman
City of Kingsburg
City of Mendota
City of Orange Cove
City of Parlier
City of Reedley
City of San Joaquin
City of Sanger
City of Selma
County of Fresno

Jueves, Febrero 16, 2017 – 5:30pm – Lado Este del Condado de Fresno

Orange Cove Community Center
1705 Anchor Dr.
Orange Cove, CA 93646

Las salas de reuniones y baños son ADA accesibles. Representantes o personas con discapacidad deben contactar a Fresno COG (559-233-4148), por lo menos con 3 días de anticipo, para solicitar auxiliares y servicios de traducción necesarios para participar en la junta pública.

Esta es la información que necesitamos para ayudar al SSTAC y al Consejo de Gobiernos de Fresno decidir si sería razonable aumentar el servicio de transporte:

1. Donde es necesario el nuevo servicio y donde comienzan y terminan los viajes.
2. Cuándo y con qué frecuencia tendrían que operar los autobuses o vans.
3. Descripción de las personas que necesitan el servicio. Incluyan la edad, las limitaciones financieras, y si tienen discapacidad que requiere servicios especiales.

Para su información, el Consejo de Gobiernos de Fresno (Fresno COG) es la Agencia de Planificación del Transporte Regional y es responsable de asegurar que las necesidades de transporte público se "cumplan razonablemente." "Razonablemente" significa que hay suficiente dinero para proporcionar el servicio y hay suficientes personas para usar el nuevo servicio.

Cada año, en nombre del Consejo de Gobiernos de Fresno, el SSTAC contacta a cientos de organizaciones e individuos para determinar si se está cumpliendo razonablemente con las necesidades del transporte público. Después de reunir información, el SSTAC recomienda a la Junta de Política de Fresno COG si existen algunas necesidades de transporte insatisfechas y que se puedan razonablemente satisfacer.

Si tiene preguntas sobre los servicios de tránsito en su área, póngase en contacto con uno de los representantes del personal, a continuación:

- Ciudad de Fresno – Mr. Jeff Long, Fresno COG Transit Planner (5659) 621-1436
- Ciudad de Clovis – Ms. Amy Hance, Transit Supervisor, (559) 324-2769
- Comunidades Rurales – Mr. Moses Stites, FCRTA General Manager, (559) 233-6789
- Programas de Servicios Sociales – Mr. Gary Joseph, CTSA Transit System Director (559) 486-6594

No podemos tomar las mejores decisiones sobre aumentar el servicio de tránsito a menos que escuchemos de las personas que usan el tránsito en el Condado de Fresno. **Por favor respondan y por favor corran la voz!**

Gracias de antemano por su ayuda y cooperación.

Bill Hyatt, Chairman
(559) 276-4341
BHyatt@cvrc.org

Attachment B-3 Unmet Needs Letter Mailing List

| | | | | | | | |
|--------------|------------|-----------------------------|---------------------|------------------------------|--------------|----|------------|
| | | Pioneer Systems | Reg. Service Admin. | P.O. Box 2963 | Oakhurst | CA | 93644 |
| | | Office of District Attorney | | 2220 Tulare St., #1700 | Fresno | CA | 93779 |
| Emma | Artin | | | 3417 N. Fresno St. | Fresno | CA | 93726 |
| Breat | Bethell | | | 1856 W. Santa Ana Ave., #102 | Fresno | CA | 93705 |
| Sandra | Brock | | | 33000 George Smith Rd. | Squaw Valley | CA | 93675 |
| Carol | Casey | | | 1917 S. Chestnut Ave., #10G | Fresno | CA | 93702 |
| Elias | Cendejas | | | 563 Elwood Road | Squaw Valley | CA | 93675 |
| Brenda | Doody | | | 5438 N. Salinas | Fresno | CA | 93722 |
| Janet | Drane | | | P.O. Box 672 | Clovis | CA | 93613 |
| Rosie | Draper | | | 2740 W. Olive, #81 | Fresno | CA | 93728 |
| Rachel | Facio | | | 4214 N. Cornelia | Fresno | CA | 93722 |
| Larry | Fleck | | | 144 Alamos Ave., #101 | Clovis | CA | 93612 |
| Bertha | Hansen | | | P.O. Box 1972 | Fresno | CA | 93718 |
| Alvin | Horne | | | 1223 E. Kaviland Ave. | Fresno | CA | 93706 |
| Jim | Ireland | | | 320 S. I St. | Madera | CA | 93637-4608 |
| Trish | Johnson | | | 22664 E. Edgar | Reedley | CA | 93654 |
| Alan | Kandel | | | 6172 N.Gentry | Fresno | CA | 93711 |
| Sharon | Levy | | | 6475 N. Sequoia Dr. | Fresno | CA | 93711 |
| Patricia | Loza | | | 2029 N. Orchard St. Apt. C | Fresno | CA | 93703-2353 |
| John & Sally | McCarthy | | | 812 "J" St. | Reedley | CA | 93654 |
| Larry | Miller | | | 1584 E. Utah | Fresno | CA | 93720 |
| Patience | Milrod | | | 844 N. Van Ness Ave. | Fresno | CA | 93728 |
| Albert | Movsesian | | | 274 W. Sierra Ave. | Fresno | CA | 93704 |
| Olivia | Ostergaard | | | 525 E. Simpson | Fresno | CA | 93704 |
| David | Powell | | | 2210 Dawson Cove Lane S. | Clovis | CA | 93611 |
| Steve | Rapada | | | 303 Shoemaker Ave | Reedley | CA | 93654 |
| Robin | Ray | | | 5024 E Laurel | Fresno | CA | 93727 |
| Robert | Rogers | | | 2737 S Bardell | Fresno | CA | 93706 |
| Kathy | Seiler | | | 2343 E. Niles Ave. | Fresno | CA | 93720 |
| Gina | Sotelo | | | 1665 N. Marks, #173 | Fresno | CA | 93722 |
| Paul | Spraetz | | | 1893 Menlo Ave. | Clovis | CA | 93611 |
| Teressa | Staples | | | 540 S. Peach Ave. | Fresno | CA | 93727 |

| | | | | | | | |
|-----------|-----------------|-----------------------------|--|------------------------------------|---------|----|------------|
| Joe | Tacchino | | | 1104 W. Brown | Fresno | CA | 93705 |
| Steve | Weil | | | 588 W. Barstow | Fresno | CA | 93704 |
| Terry | Williams | | | 5965 E. Tulare St. | Fresno | CA | 93727 |
| Dottie | Wright | | | 1387 S. Karen Ave. | Fresno | CA | 93727 |
| Vicki | Zehrun | | | 1590 W. Browning | Fresno | CA | 93711 |
| Octavia | Diener | | | 2054 W. Alluvial | Fresno | CA | 93711 |
| Tom | Berryhill | Senator | 14th District | 6215 N. Fresno St., Ste. 104 | Fresno | CA | 93710 |
| Andy | Vidak | Senator | 16th District | 2550 Mariposa, Ste. 2016 | Fresno | CA | 93721 |
| Dennis | Cardoza | Congressman | 18th District | 2222 M St., #305 | Merced | CA | 95340-3729 |
| Jeff | Denham | Congressman | 19th District | 4701 Sisk Rd., Ste. 202 | Modesto | CA | 95356 |
| Jim | Costa | Congressman | 20th District | 855 M St., Ste. 940 | Fresno | CA | 93721 |
| David G. | Valadao | Congressman | 21th District | 101 North Irwin Street, Suite 110B | Hanford | CA | 93230 |
| Devin | Nunes | Congressman | 22st District | 264 Clovis Ave., Ste. 206 | Clovis | CA | 93612 |
| Linda | Halderman | Assemblymember | 29th District | 504 Van Ness Ave. | Fresno | CA | 93721 |
| Henry T. | Perea | Assemblymember | 31st District | 2550 Mariposa Mall, Rm. 5031 | Fresno | CA | 93721 |
| | | Director | A Recovery Ctr. For Chemical Dependency | 11838 South Marshall Ave. | Reedley | CA | 93654 |
| Helen | M. | | Alcoholics Anonymous | 2812 N. Blackstone Ave. | Fresno | CA | 93703-1002 |
| Cindy | Pishione | | Alternate Ways | 2517 W. Shaw Ave. | Fresno | CA | 93711 |
| Charles | Sant'agata | Executive Dir. | American Lung Assoc. of Central CA | 4948 N. Arthur Ave. | Fresno | CA | 93705 |
| Lori | Ramirez | Executive Director | ARC Fresno | 4567 N. Marty Ave., Ste. 101 | Fresno | CA | 93722-7836 |
| | | Bilingual Counseling | Balderas Elementary School | 4625 E. Florence Ave. | Fresno | CA | 93725 |
| Emma | Lozito | | Bella Vida Group Home | 5284 N. Vernal Ave. | Fresno | CA | 93722 |
| Gretchen | Cox | Tribal Administrator | Big Sandy Rancheria | P.O. Box 337 | Auberry | CA | 93602 |
| Elizabeth | Kipp | Chairperson | Big Sandy Rancheria | P.O. Box 337 | Auberry | CA | 93602 |
| | | Administrative Office | Boys & Girls Clubs of Fresno | 540 N. Augusta | Fresno | CA | 93701 |
| Nathaniel | Brown | Program Assistant | Boys and Men of Color | 4949 East Kings Canyon Road | Fresno | CA | 93727 |
| Sandra | Celedron-Castro | HUB Manager | Building Healthy Communities | 4949 East Kings Canyon Road | Fresno | CA | 93727 |
| Mike | Prandini | Ex. V. President | Building Industry Association of Fresno/Madera | 420 Bullard, Ste. 105 | Clovis | CA | 93612 |
| | | Director of Social Services | CA Armenian Home | 6720 E. Kings Canyon Rd. | Fresno | CA | 93727 |
| Janet | Carmichael | | CA Dept. of Rehabilitation | 2550 Mariposa St., #200 | Fresno | CA | 93721 |

| | | | | | | | |
|---------|----------|-----------------------------------|---|---------------------------|---------|----|------------|
| Lonnie | Garcia | | California Detoxification Corp./Baart Clinic | 539 N. Van Ness Ave. | Fresno | CA | 93728-3419 |
| | | Area Commander | California Highway Patrol | 1382 W. Olive | Fresno | CA | 93775 |
| | | District Director | Caltrans, District 06 | P.O. Box 12616 | Fresno | CA | 93778 |
| John | Cinatl | Associate Transp. Planner | Caltrans, District 06 | P.O. Box 12616 | Fresno | CA | 93778-2616 |
| Sharri | Ehlert | Deputy District Director-Planning | Caltrans, District 06 | P.O. Box 12616 | Fresno | CA | 93778 |
| Marta | Frausto | Native American Liaison | Caltrans, District 06 | 1352 W. Olive Ave. | Fresno | CA | 93728 |
| Paul | Marquez | Transp. Planner | Caltrans, District 06 | P.O. Box 12616 | Fresno | CA | 93778 |
| Lorena | Medibles | Transportation Planner | Caltrans, District 06 | 1352 W. Olive | Fresno | CA | 93728 |
| Ken | Okerekee | Transportation Planner | Caltrans, District 06 | P.O. Box 12616 | Fresno | CA | 93778 |
| Steve | Curti | Senior Transp. Planner | Caltrans, District 6 | P. O. Box 12616 | Fresno | CA | 93778 |
| Ron | Hughes | Executive Director | CalVans | 1340 North Drive | Hanford | CA | 93230 |
| John | Mahler | Director | Calwa Recreation & Park District | 4545 E. Church | Fresno | CA | 93725 |
| Butch | Wilson | President | Canteen of Fresno | 527 L St. | Fresno | CA | 93721 |
| | | Marketing Director | Carrington Pointe | 1715 E. Alluvial | Fresno | CA | 93720 |
| Elaine | Lopes | | Catholic Charities | 149 North Fulton | Fresno | CA | 93701 |
| Alan | Lopes | Senior Companion Program Director | Catholic Churches | 149 North Fulton Street | Fresno | CA | 93701 |
| George | Findley | President | Cecil C. Hinton Community Center, Inc. | 2385 S. Fairview Ave. | Fresno | CA | 93706 |
| Brain | Vang | Board President | Center for New Americans | 4879 E. Kings Canyon Rd. | Fresno | CA | 93727 |
| Cesar | Campos | Coordinator | Central California EJ Network | | | | |
| Jeffrey | Clason | Deputy Director-Legal | Central California Legal Services, Inc. | 2115 Kern Street | Fresno | CA | 93721 |
| | | Executive Director | Central California United Cerebral Palsy | 4224 N. Cedar | Fresno | CA | 93726 |
| | | | Central Valley Aids Team | | Fresno | CA | |
| Bruce | Coleman | | Central Valley Mayors' Committee | 8839 N. Cedar Ave #2 | Fresno | CA | 93720 |
| | | Resource Developer | Central Valley Regional Center | 4615 N. Marty Ave. | Fresno | CA | 93722-7818 |
| Bill | Hyatt | Transportation Coordinator | Central Valley Regional Center | 4615 N. Marty Ave. | Fresno | CA | 93722-7818 |
| | | Director | Central Valley YMCA | 7797 N. 1st St., Ste. 101 | Fresno | CA | 93720 |
| Pam | Eaton | | Central Valley YMCA | 7797 N. 1st St., Ste. 101 | Fresno | CA | 93720 |
| Walter | Ramirez | Assistant Director | Centro Binacional Para El Desarrollo Indigena Oaxaqueno (CBDIO) | 744 North Abby Ave. | Fresno | CA | 93701 |

| | | | | | | | |
|-----------|-----------|------------------------------|--|------------------------------|-----------|----|------------|
| Rufino | Dominguez | V. Coordinator General | Centro Binacional Para El IDesarrollo Indigena Oaxaqueno | P.O. Box 106 | Fresno | CA | 93707-0106 |
| Margarita | Rocha | Executive Director | Centro La Familia | 302 Fresno St., Ste. 102 | Fresno | CA | 93706 |
| | | Resources Referral Assistant | Children Services Network | 1911 N. Helm Ave. | Fresno | CA | 93727-1614 |
| Kevin | Creighton | Dir. Of Planning | Childrens Hospital of Ctrl. CA | 9300 Valley Childrens Pl. | Madera | CA | 93637 |
| Henry | Jeff | Chairman | Choinumni Tribe | 452 S. Clovis Ave., Apt. 103 | Fresno | CA | 93727 |
| | | Assistant Ombudsman | City Manager's Office | 2600 Fresno St. | Fresno | CA | 93721 |
| Harry | Armstrong | Councilmember | City of Clovis | 655 W. Stuart | Clovis | CA | 93612 |
| Lynne | Ashbeck | | City of Clovis | 2930 Holly | Clovis | CA | 93611 |
| Jose | Flores | Councilmember | City of Clovis | 1033 Fifth St. | Clovis | CA | 93612 |
| Shonna | Halterman | General Services Manager | City of Clovis | 155 N. Sunnyside Ave. | Clovis | CA | 93611 |
| John | Holt | Assistant City Manager | City of Clovis | 1033 Fifth St. | Clovis | CA | 93612 |
| Dwight | Kroll | Planning Director | City of Clovis | 1033 Fifth St. | Clovis | CA | 93612 |
| Nathan | Magsig | Mayor | City of Clovis | 1033 Fifth St. | Clovis | CA | 93612 |
| Renee | Mathis | Engineering Dept. | City of Clovis | 1033 Fifth St. | Clovis | CA | 93612 |
| Luke | Serpa | Public Works Dir. | City of Clovis | 1033 Fifth St. | Clovis | CA | 93612 |
| Bob | Whalen | Mayor Pro-Tem | City of Clovis | 1175 N. Chapel Hill | Clovis | CA | 93611 |
| Steve | White | City Engineer | City of Clovis | 1033 Fifth St. | Clovis | CA | 93612 |
| Kelley | Bourdeau | | City of Coalinga | 155 W. Durian | Coalinga | CA | 93210 |
| Ron | Lander | Councilmember | City of Coalinga | 155 W. Durian | Coalinga | CA | 93210 |
| Steve | Raine | Councilmember | City of Coalinga | 155 W. Durian | Coalinga | CA | 93210 |
| Ron | Ramsey | Mayor | City of Coalinga | 155 W. Durian | Coalinga | CA | 93210 |
| Nathan | Vosburg | Councilmember | City of Coalinga | 155 W. Durian | Coalinga | CA | 93210 |
| Brady | Jenkins | Mayor Pro Tem | City of Firebaugh | 1133 P. Street | Firebaugh | CA | 93622 |
| Craig | Knight | Councilmember | City of Firebaugh | 1133 P. Street | Firebaugh | CA | 93622 |
| Felipe | Perez | Councilmember | City of Firebaugh | 1133 P. Street | Firebaugh | CA | 93622 |
| Marcia | Sablan | Councilmember | City of Firebaugh | 1133 P. Street | Firebaugh | CA | 93622 |
| Isabel | Saldivar | Senior Center Coordinator | City of Firebaugh | 1601 Thomas Convoy Ave. | Firebaugh | CA | 93622 |
| Freddy | Valdez | Mayor | City of Firebaugh | 1133 P. Street | Firebaugh | CA | 93622 |
| David | Cardenas | Mayor | City of Fowler | 105 Carter | Fowler | CA | 93625 |
| David | Elias | City Manager | City of Fowler | 128 S. Fifth St. | Fowler | CA | 93625 |
| Leonard | Hammer | Councilmember | City of Fowler | 128 S. Fifth St. | Fowler | CA | 93625 |
| Sandie | Monis | Councilmember | City of Fowler | 128 S. Fifth St. | Fowler | CA | 93625 |
| Daniel | Parra | Pro Tem | City of Fowler | 128 S. Fifth Street | Fowler | CA | 93625 |
| Jim | Simonian | Councilmember | City of Fowler | 413 E. Curtis | Fowler | CA | 93625 |

| | | | | | | | |
|-----------|------------|------------------------------------|--|---------------------------|-----------|----|-------|
| Yvonne | Hernandez | Senior Center Coordinator | City of Fowler - Edwin Blayney Senior Center | 108 N. 3rd | Fowler | CA | 93625 |
| Oliver | Baines | Councilmember | City of Fresno | 2600 Fresno St. | Fresno | CA | 93721 |
| Lee | Brand | Councilmember | City of Fresno | 2600 Fresno St. | Fresno | CA | 93721 |
| Steve | Brandau | Councilmember | City of Fresno | 2600 Fresno St. | Fresno | CA | 93721 |
| Paul | Caprioglio | Councilmember | City of Fresno | 2600 Fresno St. | Fresno | CA | 93721 |
| Dana | Liberty | Community Services FUN Coordinator | City of Fresno | 1515 E. Divisadero St. | Fresno | CA | 93721 |
| Brian | Marshall | Dir. Of Transportation | City of Fresno | 2223 G Street | Fresno | CA | 93706 |
| Clint | Olivier | Councilmember | City of Fresno | 2600 Fresno St. | Fresno | CA | 93721 |
| Sal | Quintero | Councilmember | City of Fresno | 2600 Fresno St. | Fresno | CA | 93721 |
| Bruce | Rudd | City Manager | City of Fresno | 2600 Fresno St. | Fresno | CA | 93721 |
| Shaun | Schaefer | Community Services Div. Mgr. | City of Fresno | 1515 E. Divisadero St. | Fresno | CA | 93721 |
| Esmeralda | Soria | Councilmember | City of Fresno | 2600 Fresno St. | Fresno | CA | 93721 |
| Ashley | Swearengin | Mayor | City of Fresno | 2600 Fresno St. | Fresno | CA | 93721 |
| Jennifer | Clark | Director Of Development | City of Fresno | 2600 Fresno St. Room 3065 | Fresno | CA | 93721 |
| Sylvia V. | Chavez | Mayor | City of Huron | P.O. Box 1193 | Huron | CA | 93234 |
| Roberto | Pimentel | Councilmember | City of Huron | P.O. Box 339 | Huron | CA | 93234 |
| Hilda | Plasencia | Mayor Pro Tem | City of Huron | P.O. Box 339 | Huron | CA | 93234 |
| Jorge | Solorio | Councilmember | City of Huron | P.O. Box 339 | Huron | CA | 93234 |
| Daniel | Tamayo Jr. | Councilmember | City of Huron | P.O. Box 339 | Huron | CA | 93234 |
| Rhonda | Armstrong | Councilmember | City of Kerman | 850 S. Madera | Kerman | CA | 93630 |
| Nathan | Fox | Councilmember | City of Kerman | 850 S. Madera | Kerman | CA | 93630 |
| Phillip | Gallegos | Community Services Director | City of Kerman | 720 S. 8th St. | Kerman | CA | 93630 |
| John | Kunkel | Interim City Manager | City of Kerman | 850 S. Madera Ave. | Kerman | CA | 93630 |
| Bill | Nijjer | Councilmember | City of Kerman | 850 S. Madera | Kerman | CA | 93630 |
| Gary | Yep | Mayor Pro Tem | City of Kerman | P.O. Box 404 | Kerman | CA | 93630 |
| | | Mayor | City of Kingsburg | 1401 Draper St. | Kingsburg | CA | 93631 |
| Sue | Bauch | Interim City Manager | City of Kingsburg | 1401 Draper St. | Kingsburg | CA | 93631 |
| Bruce | Blayney | Mayor Pro Tem | City of Kingsburg | 1401 Draper St. | Kingsburg | CA | 93631 |
| Ben | Creighton | Councilmember | City of Kingsburg | 1401 Draper St. | Kingsburg | CA | 93631 |
| Michelle | Roman | Councilmember | City of Kingsburg | 1401 Draper St. | Kingsburg | CA | 93631 |
| Joseph | Amador | Councilmember | City of Mendota | 643 Quince St. | Mendota | CA | 93640 |
| Rolando | Castro | Councilmember | City of Mendota | 643 Quince St. | Mendota | CA | 93640 |

| | | | | | | | |
|-----------|--------------|-----------------------------|---------------------|-----------------------|-------------|----|-------|
| Vince | DiMaggio | City Manager | City of Mendota | 643 Quince St. | Mendota | CA | 93640 |
| Joseph | Riofrio | Councilmember | City of Mendota | 643 Quince St. | Mendota | CA | 93640 |
| Robert | Silva | Mayor | City of Mendota | 643 Quince St. | Mendota | CA | 93640 |
| Segio | Veldez | Mayor Pro Tem | City of Mendota | 643 Quince St. | Mendota | CA | 93640 |
| Diana | Guerra-Silva | Mayor Pro Tem | City of Orange Cove | 633 Sixth St. | Orange Cove | CA | 93646 |
| Josie | Cervantes | Councilmember | City of Orange Cove | 633 Sixth St. | Orange Cove | CA | 93646 |
| Samuel | Escobar | City Manager | City of Orange Cove | 633 Sixth Street | Orange Cove | CA | 93646 |
| Victor | Lopez | Mayor | City of Orange Cove | 633 Sixth St. | Orange Cove | CA | 93646 |
| Minerva | Pineda | Councilmember | City of Orange Cove | 633 Sixth St. | Orange Cove | CA | 93646 |
| Alma | Beltran | Mayor | City of Parlier | 1100 E. Parlier Ave. | Parlier | CA | 93648 |
| Diane | Maldonado | Councilmember | City of Parlier | 1100 E. Parlier Ave. | Parlier | CA | 93648 |
| Juan M. | Montano | Councilmember | City of Parlier | 1100 E. Parlier Ave. | Parlier | CA | 93648 |
| Yolanda | Padilla | Councilmember | City of Parlier | 1100 E. Parlier Ave. | Parlier | CA | 93648 |
| Shun | Patlan | | City of Parlier | 1100 E. Parlier Ave. | Parlier | CA | 93648 |
| Raul | Villanueva | Mayor Pro Tem | City of Parlier | 13330 E. Cypress Ave. | Parlier | CA | 93648 |
| Robert | Beck | Councilmember | City of Reedley | 1717 Ninth St. | Reedley | CA | 93654 |
| Anita | Betancourt | Mayor Pro Tem | City of Reedley | 1717 Ninth St. | Reedley | CA | 93654 |
| Mary | Fast | Councilmember | City of Reedley | 1733 9th St. | Reedley | CA | 93654 |
| Joel | Glick | Community Services Director | City of Reedley | 100 N. East Ave. | Reedley | CA | 93654 |
| Henry | Rodriguez | Councilmember | City of Reedley | 1717 Ninth St. | Reedley | CA | 93654 |
| Ray | Soleno | Mayor | City of Reedley | 1717 Ninth St. | Reedley | CA | 93654 |
| Amarpreet | Dhaliwal | Pro Tem Mayor | City of San Joaquin | P.O. Box 758 | San Joaquin | CA | 93660 |
| Julia | Hernandez | Mayor | City of San Joaquin | P.O. Box 758 | San Joaquin | CA | 93660 |
| Abel | Lua | Councilmember | City of San Joaquin | P.O. Box 758 | San Joaquin | CA | 93660 |
| Carlos | Martinez | Grants Coordinator | City of San Joaquin | P.O. Box 758 | San Joaquin | CA | 93660 |
| Chad | McMullen | City Manager | City of San Joaquin | P.O. Box 758 | San Joaquin | CA | 93660 |
| Jose | Ornelas | Councilmember | City of San Joaquin | P.O. Box 758 | San Joaquin | CA | 93660 |
| Betty | Vallejo | Councilmember | City of San Joaquin | P.O. Box 758 | San Joaquin | CA | 93660 |
| | | Mayor | City of Sanger | 1700 Seventh St. | Sanger | CA | 93657 |
| Raul | Cantu, Jr. | Mayor Pro Tem | City of Sanger | 1700 Seventh St. | Sanger | CA | 93657 |
| Tim | Chapa | Dev. Svs. Director | City of Sanger | 1700 Seventh St. | Sanger | CA | 93657 |

| | | | | | | | |
|----------|-------------|---|--|--|-----------|----|------------|
| Dayle | Keller | Interim City Manager | City of Sanger | 1700 Seventh St. | Sanger | CA | 93657 |
| Rodney | Nielson | | City of Sanger | 1700 Seventh St. | Sanger | CA | 93657 |
| Jim | Avalos | Mayor Pro Tem | City of Selma | 1701 Dinuba Ave., Space 214 | Selma | CA | 93662 |
| Michael | Derr | Councilmember | City of Selma | 2425 Tammy Lane | Selma | CA | 93662 |
| Kenneth | Grey | City Manager | City of Selma | 1710 Tucker St. | Selma | CA | 93662 |
| D-B | Heusser | | City of Selma | 1710 Tucker St. | Selma | CA | 93662 |
| Mikal | Kirchner | Director of Resources & Community Svcs. | City of Selma | 1710 Tucker St | Selma | CA | 93662 |
| Scott | Robertson | Mayor | City of Selma | 1710 Tucker St. | Selma | CA | 93662 |
| George | Rodriguez | Councilmember | City of Selma | 1710 Tucker St. | Selma | CA | 93662 |
| Kevin | Hamilton | Deputy Chief of Programs | Clinica Sierra Vista | 1945 North Fine Ave. | Fresno | CA | 93727 |
| | | Community Service Officer | Clovis Police Dept. | 1033 Fifth St. | Clovis | CA | 93612 |
| Charlie | Ott | Director of Transportation | Clovis Unified School District | 1490 Herndon Ave. | Fresno | CA | 93611 |
| Chuck | Fowler | Director | Cntrl Valley Indian Health Ctr. | 20 N. Dewitt, Ste.. 10 | Clovis | CA | 93612 |
| Gregg | Foell | Comm. Ctr. Supervisor | Coalinga-Huron Rec. & Parks | P.O. Box 386 | Coalinga | CA | 93210 |
| Wendi | Howard | Recreation Supervisor | Coalinga-Huron Recreation & Parks District | P.O. Box 386 | Coalinga | CA | 93210 |
| Mark | Keppler | | Coalition for Community Trails | 538 W. Bedford | Clovis | CA | 93611 |
| Suzanne | Martinez | Assistant Regional Planner | Fresno Council of Governments | | | | |
| Carol | Bill | Administrator | Cold Springs Rancheria | P.O. Box 209 | Tollhouse | CA | 93667-0209 |
| Travis | Coleman | Chairperson | Cold Springs Rancheria | P.O. Box 209 | Tollhouse | CA | 93667-0209 |
| | | Commissioner | Commission on the Status of Women | 3283 N. Dewey | Fresno | CA | 93722 |
| Robert | Ward | Senior VP/Chief Legal Officer | Community Medical Centers | P.O. Box 1232 | Fresno | CA | 93715-1232 |
| James | VanDeVelde | Director of Business Development | Community Regional Medical Centers | 2823 Fresno Street | Fresno | CA | 93721 |
| Caine | Christensen | Project Manager-Community Connections | Community Regional Medical Centers | 2823 Fresno Street | Fresno | CA | 93721 |
| Nancy | McCabe | | Comprehensive Alcohol | 2445 W. Whitesbridge | Fresno | CA | 93706 |
| Vivian | Aldridge | Program Manager | County of Fresno DSS, Welfare to work & Child Care | 455 E. Kings Canyon, Bldg. 313 | Fresno | CA | 93702 |
| Andreas | Borgeas | Supervisor | County of Fresno | 2281 Tulare St., Hall of Records, #300 | Fresno | CA | 93721 |
| Kathleen | Donawa | Assistant CAO | County of Fresno | 2281 Tulare St., Hall of Records 304 | Fresno | CA | 93721 |

| | | | | | | | |
|----------|------------|---|---|---|----------|----|-------|
| Buddy | Mendes | Supervisor | County of Fresno | 2281 Tulare St., Hall of Records, # 300 | Fresno | CA | 93721 |
| John | Navarrette | Co. Admin. Officer | County of Fresno | 2281 Tulare St., Hall of Records, #300 | Fresno | CA | 93721 |
| Brian | Pacheco | | County of Fresno | 2281 Tulare St., Hall of Records #300 | Fresno | CA | 93721 |
| Henry | Perea | Supervisor | County of Fresno | 2281 Tulare St., Hall of Records, #300 | Fresno | CA | 93721 |
| Debbie | Poochigian | Supervisor | County of Fresno | 2281 Tulare St., Hall of Records, #300 | Fresno | CA | 93721 |
| Arthur | Wille | County Counsel | County of Fresno | 2220 Tulare St., 5th Fl. | Fresno | CA | 93721 |
| Dave | Pomaville | Director | County of Fresno Department of Public Health | 1221 Fulton Mall | Fresno | CA | 93721 |
| Linda | Espinoza | Deputy Director, AYAA | County of Fresno DSS, Adult Protective Services | 2025 East Dakota Ave. | Fresno | CA | 93726 |
| Oralia | Gomez | Program Manager | County of Fresno DSS, Cal Fresh and Medical | 5693 E. Kings Canyon Road | Fresno | CA | 93721 |
| David | Tamblin | County of Fresno | County of Fresno DSS, Cal Learn | 4452 East Kings Canyon Road | Fresno | CA | 93702 |
| Alfonzo | Dominguez | Social Services Program Supervisor | County of Fresno DSS, Coalinga Region Office | 311 Coalinga Plaza | Coalinga | CA | 93210 |
| Henry | Flores | | County of Fresno DSS, Food Stamps/CalFresh | 1209 E. Street | Fresno | CA | 93706 |
| Olga | Beltran | Social Services Program Supervisor | County of Fresno DSS, Kerman Region Office | 15180 West Whitesbridge Road | Kerman | CA | 93630 |
| Esam | Abed | Program Manager | County of Fresno DSS, Selma Region Office | 3800 McCall Ave. | Selma | CA | 93662 |
| Steve | Son | Deputy Director | County of Fresno, /Public Wks | 2220 Tulare St., 6th Floor | Fresno | CA | 93721 |
| Edward | Moreno | Fresno Co. Dept of Employment & Temporary Assistance | County of Fresno, Dept. of Employment | 4499 E. Kings Canyon Rd. | Fresno | CA | 93702 |
| Joel | Gurss | Program Manager | County of Fresno, In- Home Supportive Services | 3821 North Clark Street | Fresno | CA | 93726 |
| Mohammad | Alimi | Division Manager | County of Fresno, Public Wks. | 2220 Tulare St., 6th Floor | Fresno | Ca | 93721 |
| Kristie | Johnson | Public Works & Planning Dept. | County of Fresno, Public Wks. | 2220 Tulare St., 6th Floor | Fresno | CA | 93721 |
| Chris | Mata | Sr. Planner | County of Fresno, Public Wks. | 2220 Tulare St., 6th Floor | Fresno | CA | 93721 |
| Yvette | Quiroga | Public Works & Planning Dept. | County of Fresno, Public Wks. | 2220 Tulare St., 6th Floor | Fresno | CA | 93721 |

| | | | | | | | |
|----------|--------------|----------------------------------|---------------------------------------|-----------------------------------|------------|----|------------|
| Alan | Weaver | Director | County of Fresno, Public Wks. | 2220 Tulare St., 6th Floor | Fresno | CA | 93721 |
| Bernard | Jimenez | Deputy Dir./Planning | County of Fresno, Public Works | 2220 Tulare St., 6th Floor | Fresno | CA | 93721 |
| Harpreet | Kooner | Public Works | County of Fresno, Transp. Div. | 2220 Tulare St., 6th Floor | Fresno | CA | 93721 |
| | | Community Service Officer | Crime Prevention Unit | 2323 Mariposa St. | Fresno | CA | 93721 |
| Tara | Powers-Mead | Staff Director | CSU Fresno - ASI | 5280 N. Jackson MS SU 32 | Fresno | CA | 93740 |
| Tom | Gaffery | Parking & Transportation Manager | CSU, Fresno | 2311 E. Barstow Ave. M/S PO14 | Fresno | CA | 93740 |
| | | Executive Director | CSUF Foundation | 5310 N. Campus Dr., MS102 | Fresno | CA | 93740 |
| Joseph | Castro | President | CSUF, Fresno | 5241 N. Maple | Fresno | CA | 93740-0048 |
| John | Wells | Area Manager | Del Monte | P.O. Box 7 | Kingsburg | CA | 93631-0007 |
| Wynema | Irigoyen | | Delno Terrace Elderly Housing | 1480 N. Delno Ave. | Fresno | CA | 93728 |
| Pamela | Knight | | Dept. of Rehabilitation | P.O. Box 24001 | Fresno | CA | 93779-4001 |
| Jake | Smith | Division Chief, TDA & Training | Dept. of Trans., Div. Of Mass Transp. | P.O. Box 942874 | Sacramento | CA | 94273-0001 |
| Kathy | Yoshida | | DHHSC | 5340 N. Fresno St. | Fresno | CA | 93710 |
| Karin | Kirkendall | | Dumna Tribal Council | P.O. Box 306 | Auberry | CA | 93602 |
| Keith | Turner | Representative | Dumna Tribal Council Heritage Comm. | P.O. Box 306 | Auberry | CA | 93602 |
| Ben | Charlie, Sr. | Chairman | Dunlap Band of Mono Indians | P.O. Box 44 | Dunlap | CA | 93621 |
| Jacob | Keller | Employment Specialist | EDD | 3302 N. Blackstone Ave., Ste. 155 | Fresno | CA | 93726 |
| Suzanne | Moreno | Executive Director | Encourage Tomorrow | 2491 W. Shaw Ave, Suite 110 | Fresno | CA | 93711 |
| | | Project Coordinator | EOC Refugee Svs. | 1920 Mariposa Mall | Fresno | CA | 93721 |
| | | Director | EOC Senior Aides | 1900 Mariposa, #116 | Fresno | CA | 93721 |
| Barbara | Devinney | Development Director | Exceptional Parents Unlimited | 4440 N. First St. | Fresno | CA | 93726 |
| Dennis | Manning | Vice President | FARRC | 1162 N. Chapel Hill Ave. | Clovis | CA | 93611 |
| Moses | Stites | General Manager | FCRTA | | | | |
| Sue | Kiser | Chief, Planning, Environment | Federal Highway Admin. | 650 Capitol Mall, Ste. 4-100 | Sacramento | CA | 95814 |
| | | | FEOC | 1920 Mariposa Mall | Fresno | CA | 93721 |
| | | Program Director | Foster Grandparent Program | 1920 Mariposa Mall | Fresno | CA | 93721 |
| | | Maintenance Mgr. | Fresno Area Express | 2223 G St. | Fresno | CA | 93706 |
| John | Downs | Senior Transit Planner | Fresno Area Express | 2223 G St. | Fresno | CA | 93706 |
| Carlos | Duarte | ADA Coordinator | Fresno Area Express | 2223 G St. | Fresno | CA | 93706 |
| Kathleen | Healy | Administration Manager | Fresno Area Express | 2223 G St. | Fresno | CA | 93706 |
| Jeff | Long | Senior Regional Planner | Fresno Area Express | 2223 G St. | Fresno | CA | 93706 |

| | | | | | | | |
|-----------|--------------|--------------------------------|--|-----------------------------------|--------------|----|------------|
| Al | Munoz | ATU Vice President | Fresno Area Express | 2223 G St. | Fresno | CA | 93706 |
| Judith | Nishi | Community Coordinator | Fresno Area Express | 2223 G St. | Fresno | CA | 93706 |
| Rick | Steitz | ATU President | Fresno Area Express | 2223 G St. | Fresno | CA | 93706 |
| Tom | Bailey | | Fresno Area Residents for Rail Consolidation | 1941 W. Santa Ana | Fresno | CA | 93705 |
| Blake | Konczal | Chief Executive Officer | Fresno Area Workforce Investment Corp. | 2125 Kern Street, Suite 208 | Fresno | CA | 93721 |
| Pam | Lassetter | | Fresno Area Workforce Investment Corp. | 2125 Kern Street, Suite 208 | Fresno | CA | 93721 |
| Mario | Hernandez | | Fresno Blind Veterans | 344 W. Shields Ave. | Fresno | CA | 93705 |
| Karin | Collins | CVMC | Fresno City College | 1101 E. University Ave. | Fresno | CA | 93741 |
| Janice | Emerzian | | Fresno City College | 1101 E. University | Fresno | CA | 93704 |
| Ed | Lund | Disabled Student Counselor | Fresno City College | 1101 E. University | Fresno | CA | 93741 |
| | | Supervisor | Fresno Co. Comm. Health | 1222 Fulton Mall, MS 178 | Fresno | CA | 93721 |
| Cynthia | Shore-Harris | Marketing Director | Fresno Co. Economic Development Corp. | 906 N St., Ste.. 120 | Fresno | CA | 93721 |
| | | | Fresno Co. Hispanic Commission on Alcohol & Drug Abuse Svs. Inc. | 1803 Broadway St | Fresno | CA | 93721-1047 |
| | | | Fresno Co. Library, Bear Mtn. Branch | 30733 Kings Canyon Rd. | Squaw Valley | CA | 93675 |
| | | Social Service Coordinator | Fresno Co. Mental Health Dept. | 4441 E. Kings Canyon Rd. | Fresno | CA | 93702 |
| | | | Fresno Co. Office of Education | 1111 Van Ness Ave., Towers--Ste.4 | Fresno | CA | 93721-2000 |
| Ron | Peterson | Executive Director | Fresno Co. Transp. Authority | 2220 Tulare St. #411 | Fresno | CA | 93721 |
| Jose Luis | Gonzalez | Program Manager | Fresno County Department of Social Services | 5693 E. Kings Canyon Road | Fresno | CA | 93727 |
| Delfino | Neira | Director | Fresno County Department of Social Services | 2135 Fresno Street, Suite 100 | Fresno | CA | 93718 |
| Charles | Hunnicut | County Veteran Service officer | Fresno County Department of Veterans Services | 3845 North Clark Street | Fresno | CA | 93726 |
| Joanne | Keenen | S.E.E.S. Clinical Supervisor | Fresno County Dept. of Behavioral Health | 4441 E. Kings Canyon Rd. | Fresno | CA | 93702 |
| Brian | Angus | Executive Director | Fresno Economic Opportunities Commission | 1920 Mariposa Mall, Ste.. 300 | Fresno | CA | 93721 |
| Gary | Joseph | CTSA Transit System Dir. | Fresno Economic Opportunities Commission | 3100 W. Nielson | Fresno | CA | 93730 |

| | | | | | | | |
|----------|-------------|----------------------------------|--|-------------------------------|----------|----|------------|
| Norma | Forbes | Executive Director | Fresno Healthy Communities Access Partners | 2043 E. Davisadero Street | Fresno | CA | 93701 |
| Preston | Prince | Executive Director | Fresno Housing Authority | P. O. Box 11985 | Fresno | CA | 93776 |
| Zach | Darrah | Executive Director | Fresno Interdenominational Refugee Ministries (FIRM) | 1940 North Fresno Street | Fresno | CA | 93703 |
| Dave | Fey | Executive Officer | Fresno Local Agency Formation Comm. | 2607 Fresno Street, Suite B | Fresno | CA | 93721 |
| Jean | Robinson | Executive Director | Fresno Madera Area Agency on Aging | 3837 N. Clark St. | Fresno | CA | 93726 |
| | | Postmaster | Fresno Main Office | 1900 E St. | Fresno | CA | 93706 |
| Sarah | Sharpe | Env. Health Dir. | Fresno Metro Ministry | 4270 N. Blackstone Ave., #212 | Fresno | CA | 93726 |
| | | Director of Student Affairs | Fresno Pacific University | 1717 S. Chestnut | Fresno | CA | 93702 |
| Jerry | Dyer | Chief of Police | Fresno Police Department | 2323 Maiposa St. | Fresno | CA | 93721 |
| | | D.A.R.E. Officer | Fresno Police Dept. | 2324 Mariposa St. | Fresno | CA | 93721 |
| | | Multicultural/Multilingual Dept. | Fresno Unified School District | Tulare & M St. | Fresno | CA | 93721 |
| Demetria | Costa | Clinical Manager | Fresno-Madera Area Agency on Aging | 3837 N. Clark St. | Fresno | CA | 93726 |
| Linda | Descoteaux | Administrative Manager | Fresno-Madera Area Agency on Aging | 3837 N. Clark St. | Fresno | CA | 93726 |
| Joanne | Silvestrom | | Goodwill Industries of SJV | 6437 N. Blackstone Ave. | Fresno | CA | 93710-3508 |
| Todd | Hill | Mgr. | Granite Construction Inc. | 2716 S. Angus Ave. | Fresno | CA | 93706 |
| John | Harris | | Harris Ranch | Rt. 1, Box 420 | Coalinga | CA | 93210 |
| Lupe | Gonzalez | Supervisor | Health Net/CalViva | 1315 Van Ness Ave. | Fresno | CA | 93721 |
| | | President | Hmong American Advisory | 2333 N. Price Ave. | Fresno | CA | 93703 |
| Philip | Traynor | | Hospice of Fresno, CA | 1303 E. Herndon Ave. | Fresno | CA | 93720-9860 |
| Robert | Howk | California Senior Senator | Howk & Downing | 1540 E. Shaw Ave. #122 | Fresno | CA | 93710 |
| | | | Hy-Pana Convalescent Hospital | 3510 E. Shields | Fresno | CA | 93726 |
| Alex P. | Valdez | Executive Director | I-5 Social Services Program | 6621 N. Ferger Ave. | Fresno | CA | 93704 |
| Paul | Kwiatkowski | Division Manager | Keolis Transit America | 4488 N. Blackstone | Fresno | CA | 93726 |
| Beth | Marney | News Director | KFSN-TV Channel 30 | 1777 G St. | Fresno | CA | 93706 |
| Linda | Danna | VP/General Manager | KGPE-TV Channel 47 | 4880 N. First St. | Fresno | CA | 93726-0562 |
| Lucy | Ruiz | Public Info. Officer | KGPE-TV Channel 47 | 5035 E. McKinley Ave. | Fresno | CA | 93727 |
| Angie | Dow | Transit Manager | Kings Co. Area Public Transit Agency | 1400 W. Lacey Blvd. | Hanford | CA | 93230 |

| | | | | | | | |
|------------|------------------|----------------------------|--|---------------------------|-------------|----|------------|
| Ashlee | Schmal | Senior Citizen Coordinator | Kingsburg Senior Center | 1450 Ellis St. | Kingsburg | CA | 93631 |
| | | | Lao Buddhist Temple | 4733 W. Vassar Ave. | Fresno | CA | 93722 |
| Veronica | Garibay | | Leadership Counsel | 764 P Street, Suite 012 | Fresno | CA | 93721 |
| Jaime | Moncayo | | Leadership Counsel | 764 P Street, Suite 012 | Fresno | CA | 93721 |
| Stephenie | Frederick | | League of Women Voters | 2658 E. Alluvial, #101 | Fresno | CA | 93720 |
| Patricia | Taylor | Executive Director | Madera Co. Transp. Comm. | 2001 Howard Rd., Ste. 201 | Madera | CA | 93637 |
| Cindy | Wylie | | Maston Towers | 1240 Broadway Plaza | Fresno | CA | 93721 |
| | | Social Service Coordinator | Medical Claims Filing Service | 4733 N. Crystal | Fresno | CA | 93705 |
| Isela | Rea | Nutrition Site Coord. | Mendota Sr. Ctr. | 643 Quince St. | Mendota | CA | 93640-2334 |
| Ben | Benavides | | Mexican Am. Political Assoc. | P.O. Box 1744 | Fresno | CA | 93720 |
| Brenda | Brown | Nutrition Site Coordinator | Mosqueda Center - Senior Program | 4670 E. Butler | Fresno | CA | 93702 |
| Rev. Floyd | Harris, Jr. | President | National Action Network | 1630 W. Kearney Blvd. | Fresno | CA | 93706 |
| Jan | Kafton | | National Fed. Of the Blind | 3352 N. Marks, #107 | Fresno | CA | 93722 |
| | | | NOIA Community Ctr. | 606 E. Belmont Ave. | Fresno | CA | 93701 |
| | | Social Service Coordinator | Older Adult Care Solutions | 204 W. Portland | Fresno | CA | 93711 |
| | | | Orange Cove Family Health Ctr. | 445 Eleventh St. | Orange Cove | CA | 93646-2298 |
| Sherri | Hendrix | Coordinator | Orange Cove Sr. Ctr. | 699 6th St. | Orange Cove | CA | 93646 |
| Diane | Martinez | | Pacific Gas & Electric Co. | 705 P St. | Fresno | CA | 93721 |
| Myrna | Martinez Nateras | Program Director | Pan Valley Institute | 1440 W. Shaw Ave., Ste. A | Fresno | CA | 93711 |
| Rick | Garcia | | Parlier Senior Services | 1100 E. Parlier Ave. | Parlier | CA | 93648 |
| | | Reg. Service Admin. | Pioneer Systems | P.O. Box 2963 | Oakhurst | CA | 93644 |
| Bruce | Whitsitt | | Poverello House | P.O. Box 12225 | Fresno | CA | 93777 |
| Jim | Mulligan | Student Activities | Reedley College | 955 North Reedley Ave. | Reedley | CA | 93654 |
| | | Medical Interpreter Escort | Refugee Health Screening | P.O. Box 11867 | Fresno | CA | 93775 |
| Charles | Arokiasamy | RhD. | Rehabilitation Counseling Program, CSUF | 5005 N. Maple, MS3 | Fresno | CA | 93740 |
| Bob | Hand | Executive Director | Resource for Independence-Central Valley | 3008 N. Fresno St. | Fresno | CA | 93703-1124 |
| | | Administrator | Robinwood Inn | 567 W. Sample | Fresno | CA | 93704 |
| | | | Salvation Army Congregate Meals | 1854 Fulton St. | Fresno | CA | 93721 |

| | | | | | | | |
|---------|-----------|----------------------------|---|------------------------------|------------|----|------------|
| Leonard | Kelley | Director | San Joaquin Gardens | 5555 N. Fresno St. | Fresno | CA | 93710 |
| Seyed | Sadredin | Executive Director | San Joaquin Valley Air District | 1990 E. Gettysburg | Fresno | CA | 93726 |
| | | | San Joaquin Valley Dialysis | 3636 N. First St., #144 | Fresno | CA | 93726 |
| Mary | Wallace | Director | San Joaquin Valley Health Consortium | 6356 N. Fresno St., Ste. 102 | Fresno | CA | 93710 |
| Rey | Leon | Executive Director | San Joaquin Valley Latino Environmental Advancement Project | 1515 E. Divisadero Ave. | Fresno | CA | 93721 |
| | | Assistant Professor | School of Health & Social Work Ed. | 3225 E. San Ramon Ave. | Fresno | CA | 93740 |
| | | | Selma Community Health Center | 1041 E. Rose Ave. | Selma | CA | 93662-3292 |
| | | Social Service Coordinator | Senior Advocate | 1567 E. Almendra | Fresno | CA | 93710 |
| Joe | Bowling | | Sequoia Area VIII Board | 770 E. Shaw, #123 | Fresno | CA | 93710 |
| Rebecca | Mendibles | Executive Director | SER Jobs for Progress | 255 N. Fulton St., #106 | Fresno | CA | 93701 |
| | | Administrator | Shaw Ranch | 8016 E. Shaw | Clovis | CA | 93611 |
| | | Community Service Officer | Sheriff's Dept. | 2200 Fresno St. | Fresno | CA | 93717 |
| | | Executive Director | Sierra Mono Museum | P.O. Box 929 | North Fork | CA | 93643 |
| Dick | Charley | | Sierra National Forest | 1600 Tollhouse Rd. | Clovis | CA | 93611 |
| Denise | Benelli | Site Coordinator | Sierra Oaks Senior and Community Center | 33276 Lodge Road | Tollhouse | CA | 93667 |
| Pat | Gallegos | President | Sierra Oaks Senior Citizens Association | 33276 Lodge Road | Tollhouse | CA | 93667 |
| | | Investment Advisor | Smith Barney | 5250 N. Palm, #301 | Fresno | CA | 93704 |
| | | Marketing Director | Somerford Place | 6075 N. Marks Ave. | Fresno | CA | 93711 |
| LaDonna | Armack | Nutrition Site Coord. | Sr. Citizens Village | 1917 S. Chestnut | Fresno | CA | 93702 |
| | | Coordinator | Sr. Nutrition, Ted C. Wills Ctr. | 770 N. San Pablo | Fresno | CA | 93728 |
| Tong | Lee | Social Worker | Stone Soup of Fresno | 1345 E. Bulldog Lane | Fresno | CA | 93710 |
| | | Social Service Coordinator | Summit Care Corporation | 5630 N. Van Ness | Fresno | CA | 93711 |
| Barry | Kriebel | President | Sun-Maid Growers of CA | 13525 S. Bethel | Kingsburg | CA | 93631 |
| | | Executive Director | Sunrise Assisted Living | 7444 N. Cedar | Fresno | CA | 93720 |
| Wendy | Eisenberg | Librarian - Supervisor | Talking Book Library for the Blind | 770 N. San Pablo | Fresno | CA | 93728 |
| Lori | Alvarez | Executive Director | TAT Management Company, Inc. | 530 W. Floradora Ave. | Fresno | CA | 93728 |
| Rose | Willems | Advocate | The Advocate | 4538 E. Weldon | Fresno | CA | 93703 |
| | | Social Service Coordinator | The Gendron Home | 6786 N. Hayston | Fresno | CA | 93710 |
| Jose | Benavides | | TJKM Transportation Consultants | 516 W. Shaw | Fresno | CA | 93704 |
| Sandy | Files | Program Director | Total Health Care | 1200 Smith St. | Kingsburg | CA | 93631 |

| | | | | | | | |
|----------|------------|---|---------------------------------------|----------------------------------|--------------|----|------------|
| | | | Cetner | | | | |
| | | | Total Life at St. Agnes | 1303 E. Herndon Ave. | Fresno | CA | 93720-3309 |
| Angie | Osborne | Chairperson | Traditional Choinumni Tribe | 2787 N. Piedra R. | Sanger | CA | 93657 |
| Robert | Trout | | Traffic Engineering Services | 647 E. Quincy Ave. | Fresno | CA | 93720-2127 |
| Joe | Mendes | | Tranquillity Union High School | P. O. Box 457 | Tranquillity | CA | 93668 |
| Randy | Equisquiza | Sr. Mgr. Terminal Operations | Union Pacific RR | 3135 N. Webber Ave. | Fresno | CA | 93705 |
| Justin | Preas | Chief Operation Officer | United Health Center of the SJV | 517 S. Madera Ave. | Kerman | CA | 93630 |
| | | Chief Ex. Officer | United Health Centers | 650 Zediker Ave., P.O.Box 190 | Parlier | CA | 93648 |
| Maxine | Helman | | United Health Centers | 121 Barboza St | Mendota | CA | 93540 |
| | | President | United Hmong Foundation | 4568 E. Pine Ave. | Fresno | CA | 93703 |
| Richard | Kriegbaum | President | United Way of Fresno Co. | 4949 E. Kings Canyon Rd. | Fresno | CA | 93727 |
| Michael | Alexander | President | United Way of Fresno County | 4949 E. Kings Canyon Road | Fresno | CA | 93727 |
| | | Resource Conservation Technician | USDA - Natural Conservation | 1907 N. Gateway Blvd., Suite 101 | Fresno | CA | 93727 |
| Julie | Larsen | | USDA Forest Services | 1600 Tollhouse Rd. | Clovis | CA | 93611 |
| Marian | Orvis | | VACCHCS-GECU | 2615 Clinton Ave. | Fresno | CA | 93703-2286 |
| David | Reed | OASIS Program Manager | Valley Caregiver Resource Center | 3845 N. Clark St., Ste. 201 | Fresno | CA | 93726-4812 |
| Michelle | Mastro | Executive Director | Valley Caregiver Resource Center. | 3845 N. Clark St., Ste. 201 | Fresno | CA | 93726-4812 |
| Phoeng | Gip | Program & Office Coordinator | Valley Center for the Blind | 3417 W. Shaw Ave. | Fresno | CA | 93711 |
| | | Social Service Coordinator | Valley Memorial Society | 622 W. Rialto Ave. | Fresno | CA | 93705 |
| | | | Wesley Ctr. | 1343 E. Barstow | Fresno | CA | 93710 |
| Yolanda | Randles | Executive Director | West Fresno Family Resource Center | 302 Fresno Street | Fresno | CA | 93706 |
| Eliseo | Gamino | Associate Dean | West Hills Community College Dist. | 1511 Ninth St. | Firebaugh | CA | 93622 |
| Bertha | Felix-Mata | Director of Title IV Programs | West Hills Community College District | 300 Cherry Lane | Coalinga | CA | 93710 |
| Joanne | Cisnros | Federal Motor Carrier Safety Admin. | Western Service Ctr. | 12600 W. Colfax Ave., Ste. B300 | Lakewood | CO | 80215-3753 |
| Nancy | Garrett | | Winners on Wheels | 2842 Business Park Ave. | Fresno | CA | 93727-1328 |
| | | Coordinator | World Relief Refugee Svs. | 2301 Lamona | Fresno | CA | 93703 |
| MaryJane | Skjellerup | Senior Director of Programs, Central Valley | Youth Leadership Institute | 550 E. Shaw Ave. | Fresno | CA | 93710 |
| Vicki | Zehrun | | | 1590 W. Browning | Fresno | CA | 93711 |

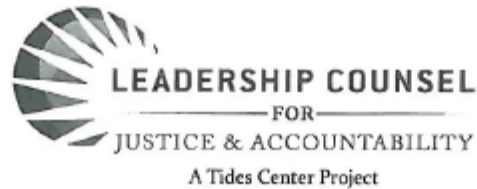
Attachment C
Information Gathering Meeting Attendance Lists

| UNMET TRANSIT NEEDS INFORMATION GATHERING MEETING FEBRUARY 14, 2017 CITY OF CLOVIS (FCMA) SIGN-IN SHEET | | |
|---|---------------------------------|--------------|
| NAME | ADDRESS | PHONE |
| Gary Joseph | FEOC | 266-3663 |
| Jeff Long | Fresno COG | 621-1436 |
| Amy Hance | City of Clovis | 324-2769 |
| Moses Stites | FCRTA | 233-6789 |
| Bethany Berube | 155 N Sunnyside Clovis CA 93612 | 324-2771 |
| Shonna Halterman | City of Clovis | 324-2767 |
| Bill Hyatt | CVRC | 276-4341 |
| Roman Estrada | 71 W. National Ave. | 349-7805 |
| Lorena Medibles | 1352 W. Olive (Caltrans) | 445-5421 |
| Gabriel Viveros | Congressman Valadao's Office | 417-7058 |
| Amanda Monaco | 746 P St. Ste. 012 Fresno 93721 | 352-359-0963 |
| Monty Cox | 3100 Nielsen Fresno (FEOC) | 263-1073 |

| UNMET TRANSIT NEEDS INFORMATION GATHERING MEETING FEBRUARY 15, 2017 CITY OF SAN JOAQUIN SIGN-IN SHEET | | |
|---|-------------------------|----------|
| NAME | ADDRESS | PHONE |
| Gary Joseph | FEOC | 266-3663 |
| Jeff Long | Fresno COG | 621-1436 |
| Monty Cox | FEOC | 263-8004 |
| Moses Stites | FCRTA | 233-6789 |
| Jose Ornelas | City of San Joaquin | 567-7302 |
| Elizabeth Nunez | City of San Joaquin | 693-4311 |
| Gean | Resident of San Joaquin | 274-6224 |

| UNMET TRANSIT NEEDS INFORMATION GATHERING MEETING FEBRUARY 16, 2017 CITY OF ORANGE COVE SIGN-IN SHEET | | |
|---|------------|----------|
| NAME | ADDRESS | PHONE |
| Monty Cox | FEOC | 266-8004 |
| Jeff Long | Fresno COG | 621-1436 |
| Moses Stites | FCRTA | 233-6789 |

Attachment D-1
Unmet Needs Comment



April 7, 2017

Bill Hyatt, SSTAC Chairman
Central Valley Regional Center, Inc.
4615 North Marty
Fresno, CA 93722

Re: Comments on Unmet Public Transportation Needs in Fresno County

Dear Mr. Hyatt,

We are writing to provide input on the Fresno Council of Governments Social Services Transportation Advisory Council's (SSTAC) annual assessment of gaps in public transportation infrastructure and investment. We thank you for the opportunity to submit comments on this matter to help guide the local planning process and ensure the provision of an effective and equitable transit system for all Fresno residents.

The following comments aim to assist SSTAC in analyzing the transit needs that are not currently being met in rural Fresno County and the City of Fresno. Leadership Counsel works directly with disadvantaged communities in these areas, and our knowledge of transportation infrastructure issues in these jurisdictions stems directly from our work in these areas and our discussions with residents.

Fresno County must vastly expand its investment in flexible, accessible, affordable and economically feasible rural transit for disadvantaged rural communities.

Agencies serving rural Fresno County residents must think outside of the box and provide affordable and flexible programs that better suit the needs of this population. Agencies like the Fresno County Rural Transit Agency (FCRTA) have made strides to provide more rural transportation options in communities like Lanare, but more needs to be done to implement projects that are creative and well-tailored to community needs. Rural transportation is crucial in these communities, where many individuals cannot afford a car or cannot drive themselves, but traditional public transportation models like bus routes are not appropriate.

Infrequent stops, low ridership, and resulting low income generation have proven to be insurmountable obstacles to traditional bus and shuttle routes, so these agencies must work with local communities to develop transit solutions that are better suited to their needs. This requires extensive engagement with community residents in each area to determine each community's needs and feasibility of a variety of projects including formal rideshare and vanpool programs. This is critical to the success of rural transportation projects, and to residents' ability to access services like grocery stores, medical appointments, and more, and should not put a large burden on rural transit agencies' resources if these projects are well-tailored to local needs. In

order to achieve successful engagement, Fresno County transportation agencies should coordinate with local community-based organization who can assist with this outreach, and must implement community input in project design. Fresno County must make a good faith effort to provide a fair and equitable transit service to rural residents.

We recommend that Fresno County transportation agencies follow the model set by two community-designed and community-based projects in Fresno County. The first, the VANYVienen project, serves the Cantua Creek and El Porvenir, and will utilize an electric van to transport residents several times a week to nearby cities and will set its schedule around residents' schedules. The second, the Green Raiteros project in Huron, will establish a corridor of EV charging stations for sustainable transit from Huron to nearby cities. Both projects have substantial community buy-in because they were formed directly by community input. Furthermore, both projects were recently selected for grant funding by the Just Transit grant program, and have been designed to be financially self-sustaining while successfully addressing local transportation needs.

In addition, where waiting stations or bus stops exist or are contemplated for rural communities, the County must ensure safe access to these locations, including sidewalks and crosswalks, storm water drainage so that standing water does not impede access, and effective signage.

The City of Fresno and Fresno County must dedicate resources to ensuring safe, well-planned public transit in disadvantaged communities and disadvantaged County island communities in the city of Fresno.

Residents in the City of Fresno have expressed the following critical infrastructure needs regarding public transit.

First, there is a critical need for more reliable, affordable and frequent bus routes that reach communities west of Interstate 99, such as near Jane Addams Elementary and Southwest Fresno.

Along existing bus routes, poor conditions surrounding bus stops greatly impede the public's ease of access to these resources. Specifically, safe access to these locations must be improved by including complete sidewalks and crosswalks, storm water drainage so that standing water does not impede access, lighting for safe nighttime travel, effective signage, benches, shade, and trash cans. Residents also emphasize the need for more stops along each route, so that they do not have to walk so far to bus stops.

Lastly, residents have also expressed the need for cultural sensitivity training, in order to ensure that all passengers are treated equally and with respect regardless of race, primary language or nationality. Prevention of discrimination and offensive treatment of riders is key to guaranteeing effective and safe transit for all.



We appreciate the opportunity to submit comments to this important process, and will gladly serve as a resource as SSTAC and the transit agencies in Fresno County seek to address these unmet transit needs.

Sincerely,

Amanda Monaco
Policy Advocate
Leadership Counsel for Justice and Accountability

Attachment D-2
Unmet Needs Response



May 23, 2016

Amanda Monaco, Policy Advocate
Leadership Counsel for Justice and Accountability
764 P Street, Suite 012
Fresno, CA 93721

Dear Ms. Monaco:

SUBJECT: UNMET TRANSIT NEEDS

Thank you for your letter dated April 7, 2017, regarding Unmet Transit Needs. Your concerns regarding transportation needs in the Fresno-Clovis Metropolitan Area (FCMA) have been communicated to the Social Services Transportation Advisory Council (SSTAC) for its review and comment.

There are several concerns identified in your letter, of which a number of them are focused on infrastructure projects such as crosswalks, sidewalks and storm drains. These issues are not public transit and are not evaluated by SSTAC. They will be forwarded to the appropriate staff at the City of Fresno and Fresno County.

We appreciate the intent of Leadership Fresno in recommending non-traditional public transportation models, however, as a public transit agency, there are a number of Federal and State regulations that transit agencies like FCRTA must follow in order to receive their funding. This includes 10% farebox recovery, wheelchair accessible vehicles, TDA ridership and cost analysis, California Highway Patrol inspections of vehicles and facilities and driver requirements, including drug and alcohol testing. The community based project examples you cite have not been put into service and therefore we have no data to support their effectiveness. The County has an existing vanpool program for commuters and farmworkers. Please contact staff at Fresno Council of Governments for additional information.

In regards to the electric vehicle charging stations, FCRTA completed the installation of 13 solar electric vehicle charging units throughout the County. Currently there is one charging station in each of the incorporated cities. These stations are available to the general public and dedicated electric transit vehicles. Fresno County is the 1st rural county in the nation with this type of electric vehicle infrastructure.

Currently Fresno Area Express (FAX) operates 4 routes west of highway 99. These are 9, 39, 41, and 30. The area west of Highway 99 has been identified in the Short Range Transit Plan as an unfunded area for service expansion. Other areas within the city limits also are identified. Ridership in the Jane Adams area currently does not justify additional bus service or amenities. In fiscal year 2016, the average daily boarding at the 4 stops surrounding this area was 33. The bus stop in front of the school has a bench, but the sidewalk width does not allow any additional amenities to be installed. On the south end of the school near the ponding basin, is a stop with full amenities including a shelter. Per FAX standards a shelter is required when boardings reach 60 per day.

City of Clovis
City of Coalinga
City of Firebaugh
City of Fowler
City of Fresno
City of Hanford
City of Kernman
City of Kingsburg
City of Mendota
City of Orange Cove
City of Partler
City of Reedley
City of San Joaquin
City of Sanger
City of Selma
County of Fresno

Lastly, we agree that safe paths to bus stops are important to our community. However, this is not the responsibility of the transit agencies. Infrastructure is a responsibility of the public works departments for the cities and county.

The Unmet Needs process is a State mandate to identify potential transit needs prior to Local Transportation Funds (LTF) funding being made available for street and road repairs. The City of Fresno allocates all of its LTF to public transit; an Unmet Needs finding in the FCMA will not serve to bring additional funds to the City of Fresno to implement service. The SSTAC did not find these concerns to qualify as an unmet need that is reasonable to meet.

Thank you for your participation in the Unmet Transit Needs process. We look forward to your continued support of public transit in Fresno County.

If you have any questions, please feel free to call me at (559) 276-4341, or if you prefer, you may send e-mail to BHYATT@cvrc.org.

Sincerely,

A handwritten signature in black ink, appearing to read "Bill Hyatt", written in a cursive style.

Bill Hyatt
Chairman-SSTAC

10. Minutes of the Public Hearing, June 29, 2017

FRESNO COG POLICY BOARD MINUTES

Thursday, June 29, 2017
5:30 PM

Members Attending:

Mayor Nathan Vosburg, City of Coalinga
Mayor Brady Jenkins, City of Firebaugh
Mayor David Cardenas, City of Fowler
Councilmember Steve Brandau, City of Fresno
Mayor Rey León, City of Huron
Mayor Rhonda Armstrong, City of Kerman
Mayor Michelle Roman, City of Kingsburg
Councilmember Alma Beltran, City of Parlier
Mayor Anita Betancourt, City of Reedley
Mayor Pro Tem Eli Ontiveros, City of Sanger
Mayor Michael Derr, City of Selma
Supervisor Sal Quintero, County of Fresno

Gail Miller, Caltrans
Arthur Wille, Legal Counsel
Tony Boren, Executive Director

Absent:

Mayor Bob Whalen, City of Clovis
Mayor Pro Tem Amarpreet Dhaliwal, City of San Joaquin
Mayor Rolando Castro, City of Mendota
Mayor Victor Lopez, City of Orange Cove

Quorum: At the start of the meeting, there were 11 members representing 85.26% of the population, there was a quorum to conduct business. (Coalinga, Firebaugh, Fowler, Fresno City, Huron, Kerman, Parlier, Reedley, Sanger, Selma, Fresno County).

The meeting was called to order at 5:36PM by Mayor Cardenas, Vice Chair.

Fresno COG Sitting as the Transportation Policy Committee

I. TRANSPORTATION ACTION/DISCUSSION ITEMS

The City of Kingsburg enters.

Quorum: There were 12 members representing 86.48% of the population, there was a quorum to conduct business.

I. PUBLIC HEARING: Unmet Transit Needs Update Resolution 2017-19 (Jeff Long) [APPROVE]

Mr. Long (FAX) reported that the Fresno COG Policy Board must determine that public transportation needs within Fresno County will be reasonably met in Fiscal Year 2017-18 prior to approving claims of Local Transportation Funds for streets and roads. The Fresno COG's Social Service Transportation Advisory Council (SSTAC) is responsible for evaluating unmet transit needs. Each year the SSTAC begins the process of soliciting comments from the public by sending approximately 400 letters to agencies and individuals interested in providing feedback on their public transportation needs within Fresno County. The request for comments letters, English and Spanish, were sent on January 27, 2017.

In addition to the request for written comments, SSTAC held three information-gathering meetings.

The first outreach meeting was held in the City of Clovis, on February 14, 2017, at the Clovis Senior Center at 850 Fourth Street, Clovis, CA 93712. The location was selected to facilitate comments from the residents of the Fresno-Clovis Metropolitan Area (FCMA) and surrounding unincorporated communities. The meeting time was set for 5:30 p.m. Comments received were related to service in the rural and unincorporated area of Cantua Creek. Amanda Monaco of the Leadership Counsel for Justice and Accountability informed the group of a project to establish a vanpool program for this area. They were seeking grant funding for the demonstration project. Cantua Creek is currently served by Fresno County Rural Transit (FCRTA).

The second meeting was held in the City of San Joaquin on February 15, 2017, at the San Joaquin Senior Center at 21991 W. Colorado, San Joaquin, CA 93660. The location was selected to facilitate comments from the residents of Western Fresno county including: Coalinga, Firebaugh, Huron, Kerman, Mendota, San Joaquin, and the surrounding unincorporated communities. The meeting time was 5:30 p.m. The only concern was from a resident of San Joaquin that travels to the City of Kerman for shopping/prescriptions. FCRTA operates a hybrid fixed-route-demand response system for this area. This was an issue of service clarification and not an unmet transit need.

The final outreach meeting was held in the City of Orange Cove, on February 16, 2017, at the Orange Cove Community Center at 1705 Anchor Ave., Orange Cove, CA 93646. The meeting location was set to facilitate comments from the residents of eastern Fresno county including: Fowler, Kingsburg, Orange Cove, Parlier, Reedley, Sanger, Selma, and the surrounding unincorporated communities. The meeting time was set for 5:30 p.m. No comments were received.

The SSTAC Chairman received one (1) written comment regarding perceived "Unmet Transit Needs". These came in the form of emails and written correspondence. Copies of the actual emails and letters, and staff responses are attached to this Report. They are summarized as follows:

1. The only comment letter was received from Amanda Monaco, Policy Advocate at Leadership Counsel for Justice and Accountability, requesting the implementation of vanpool and rideshare programs for the rural areas. In addition, they are requesting improved infrastructure near transit stations. Other concerns include transit service in southwest Fresno and Jane Adams Elementary School along with infrastructure needs.

After thorough review of all items, the Social Services Transportation Advisory Council (SSTAC) found there to be no unmet transit needs that are reasonable to meet in Fresno County.

Mayor Vosburg (Coalinga) stated that there is a need for transportation from Huron to Coalinga after hours. Residents of Huron have expressed the need to get from Huron to Coalinga Hospital. If they are at the hospital after transit has stopped for the day, they do not have a way to get home. Currently there is not a reliable Uber system in Coalinga and Huron. Mayor Leon (Huron) asked how many residents from Huron attended the outreach meeting in San Joaquin. Mr. Long (FAX) responded that none attended. Mayor Leon stated that Huron and Coalinga are far from San Joaquin and suggested that in the future a meeting should be held in Huron or Coalinga. Mayor Leon responded to Mayor Vosburg that Valley LEAP received a grant from Just Transit for the Green Raiteros program. Once operational, Green Raiteros will be able to provide transportation from Huron to Coalinga.

Mariah Thompson, California Rural Legal Assistance (CRLA) expressed concerns with the process that FCOG made the determination that there are no unmet needs in Fresno County. Title VI requires MPOs to promote inclusive public participation in transportation planning activities. Pursuant to this MPOs must develop a Public Participation Plan (PPP), which must include a process for seeking out and considering the needs of those that are traditionally underserved by existing transportation systems. FCOG does have a PPP, but almost none of the strategies contained the PPP were used in the Unmet Transit Need process. FCOG did send out letters, but there were no flyers, media outreach and no on the ground partnerships. 400 letters were mailed and the list was reviewed. Letters were sent to about 145 city officials or transportation planners, elected officials, US Forest service and people who do not live in Fresno (Colorado and Madera). Only about 50 letters were sent to people who work directly with the residents. As a result the outreach meetings were poorly attended. CRLA finds it notable that FCOG received very few comments on the Unmet Transit Needs when there are substantial transit needs in Fresno County, especially in the rural areas. CRLA is concerned that FCOG choose to interpret the lack of public participation as the existence of no Unmet Transit Needs. The impact of today's decision is drastic. If this is passed by the Policy Board the funds that were initially sent to FCOG to use for transit projects can get used for roads and maintenance. The amount of money at stake is around \$4 million.

Ms. Thompson (CRLA) continued to report specific needs from communities CRLA works with. West Park is an unincorporated community, located outside of Fresno's Sphere of Influence in the southwest part of city Jensen and Marks area. The population is about 800. The closest transit stop is between 1-4 miles away. Some residents pay of taxis to go into town. Others ride bikes, but there is not a bike path serving the community. A majority of the community are farm labors who are not currently served by the farm labor vanpool program. West Park residents are requesting a transit route into Fresno City. The community of Del Rey is currently served by transit and is fairly successful. The residents would like to see an expansion of transit, with earlier hours or weekend hours. Residents in Kerman, Mendota, Firebaugh and Biola have commented, during the recent RTP Workshops, that they are underserved by transit and there is a need for additional transportation in those communities. Biola residents have commented that the community is not currently served by any public transit. In Mendota and Firebaugh, residents have expressed the need for buses to run more frequently.

Mayor Vosburg (Coalinga) asked if Ms. Thomas is suggesting that there is \$4 million that could be used to meet transportation that will now be put to another source. Ms. Thomas (CRLA) responded the action before the Policy Board is a Public Utilities Code requirement, in summary states, that certain types of transportation funds come into MPOs to plan for transit and to provide transit. Priority must be given to public transit projects. Once an MPO has determined that all of the transit needs in their jurisdiction have been met, the funds can be used for road maintenance and road projects. Mr. Boren (FCOG) provided clarification that the Unmet Needs report is stating that there are no unmet transit needs that are reasonable to meet. The way that the law is set up, is that if the region makes the determination that all transit needs that are reasonable to meet have been met, then the money can revert back to the cities for use on streets and roads. Mayor Vosburg (Coalinga) asked if FCOG did not think it is reasonable to use \$4 million to fund an Uber system for Coalinga and Huron to get residents back and forth to the hospital. Mr. Beshears (FCOG) responded that Uber is not public transit. Mr. Beshears provided clarification that FCOG receives \$35 million from the Transportation Development Act (TDA) funds. This money is split up into different articles to be used on specific projects. Article 4 is transit and Article 8 is streets and roads. If there are funds leftover after you have met the reasonable unmet transit needs they can revert to Article 8 projects. Fresno City and Clovis use all of their Article 4 & 8 funds for transit. Funds then cannot be taken from Fresno City and Clovis' apportionment table to give it to other cities.

Mayor Armstrong (Kerman) stated that she has not heard, from residents in her city, complaints about Kerman's transportation needs. Mayor Armstrong suggests that if CRLA is working with residents that this information be passed on to the city. And, if residents are looking for an outlet for public participation, Kerman holds City Council meetings twice a month. Ms. Thompson (CRLA) responded that residents with limited English proficiencies, living in rural parts of the county have many obstacles to participating in public meetings. Mayor Betancourt (Reedley) stated that in her community there are a lot of undocumented farm laboring families. They will not speak up, because they are afraid to do so and are unaware of the process. For the RTP workshop a group of mothers from the community went door to door inviting families to the workshop.

Mr. Beshears (FCOG) provided further clarification on the TDA funds and who the funds belong to. The State divides the TDA funds in areas of apportionment. Each city and Fresno County has their prorated share of apportionment. The cities of Fresno and Clovis are spending all of their funds on transit. The rural cities work with FCRTA to develop transit services. The unincorporated cities would come out of Fresno County's apportionment.

Mr. Long (FAX) responded to Ms. Thompson's earlier comments with regard to the public outreach. The letter that was mailed to Colorado was to the Federal Department of Motor Carriers. The letter is sent to them because they are an oversight agency. The letters are posted at the member agency's City Halls and Community centers and times for the outreach meetings are set by the host city.

Mr. Stites (FCRTA) responded to Ms. Thompson's earlier comments with regard to the communities she is working with that have expressed transit needs. Del Rey has a transit system that operates 8am-4pm in the City of Del Rey and Sanger. FCRTA will go into the community to find out from residents what the needs are. Westpark has three fixed route FAX buses in the vicinity. The distance to these routes will be looked at and FCRTA will go into the community to find out from residents what the needs are. There are two viable options. Have a shuttle service connect to the current FAX fixed route or provide service from Westpark to Courthouse Park.

Mayor Vosburg (Coalinga) asked what the process is to relay to the public that there is \$4 million of

unspent funds. In the documents provided, it does not state that funds will be given back because they were not needed. In the City of Coalinga there is a Dial-A-Ride, which no one uses because of poor service. How does a city get fixed-route buses and who decides where they go? Mayor Vosburg believes that the service would be more effective if it was on a fixed-route and asked who manages these routes and who would audit the system to determine if something more effective could be put in place. Mayor Leon (Huron) stated that he has used the Dial-A-Ride and it works effectively in Huron. Mr. Stites (FCRTA) responded that there are three cities that operate their own transit system; they are Coalinga, Kerman and Reedley. The city management and staff, in each of these cities, have chosen to manage operations the transit system. Mayor Betancourt (Reedley) stated that Dial-A-Ride works perfectly in Reedley. That a bus was added due to increased ridership.

Mr. Boren (FCOG) provided clarification that if the Policy Board votes to approve the action today, it will send money back to the individual cities, for Coalinga it would be about \$590,000. Each city then has the ability to use those funds on streets and roads. Mr. Beshears (FCOG) explained the process. The Policy Board adopts an apportionment table and each City has its prorated share. Once the Unmet Need hearing is met, any funds remaining can be claimed as Article 8 Streets & Roads. If it is determined those funds should not be used for streets and roads then the money will stay in transit. At which point the cities would need to communicate with FCRTA to discuss the level of service needed.

After an expressed opportunity for public comment, a motion was made by Mayor Beltran (Parlier), seconded by Mayor Betancourt (Reedley) to approve Resolution 2017-19 making the finding that there are no unmet transit needs that are reasonable to meet in Fresno County. A vote was called and the motion passed.