

# Chapter 6

**P**arlier, California *Orchards in the Fall*

## **Public Participation** *Working Together for a Better Plan*

*From outreach planning to implementation of our strategies,  
this chapter outlines the comprehensive, inclusive  
public participation conducted by Fresno COG*

## 6.1 Public Participation



The Fresno Council of Governments developed and implemented a comprehensive, inclusive public outreach program that spanned a two-year period covering early 2018 Regional Transportation Plan (RTP) and Sustainable Communities Strategy (SCS) planning through final adoption.

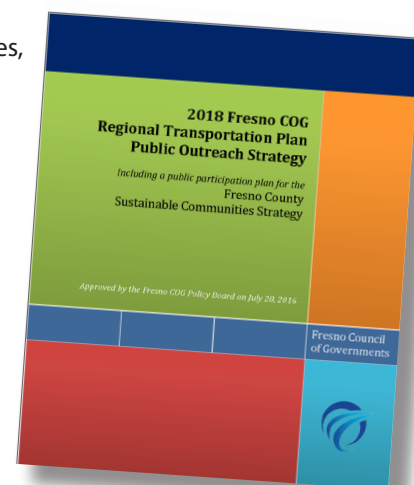
Fresno COG staff gathered data and feedback from multiple community-based organizations, stakeholders, partnering agencies, non-profit organizations and the public for the Policy Board and other advisory committees to consider during RTP development and when selecting a preferred Sustainable Communities Strategy. From planning to implementation this chapter outlines Fresno COG's public participation efforts.

### Fresno COG's Public Participation Plan

The RTP public participation process began with updating the Fresno COG Public Participation Plan (PPP), which the Policy Board adopted on July 28, 2016. The PPP provided direction for all public participation activities. It contained the participation requirements, procedures, strategies and techniques that Fresno COG's standing committees and staff used for public outreach and participation. The approved PPP included an outreach strategy in Appendix A of the plan titled "2018 Fresno COG Regional Transportation Plan Public Outreach Strategy" update that specifically detailed the strategies used to enlist public participation and how the public could participate during each step of the RTP process.

### 2018 Fresno COG Regional Transportation Plan Public Outreach Strategy

The public outreach strategy outlined the goals, strategies and methods that guided Fresno COG's efforts to build RTP awareness with particular emphasis on the Sustainable Communities Strategy. The outreach strategy specifically outlined tactics to reach out to nontraditional, as well as traditional audiences, to include them in the transportation planning process. It was designed to help ensure that environmental justice issues were addressed and that interested parties had ample opportunity to understand and provide meaningful input while the RTP was in its early stages and throughout the planning process.



In fact, the public helped develop the outreach strategy, including members of Fresno COG's Regional Transportation Plan Roundtable, Transportation Technical Committee, Policy Advisory Committee and Policy Board. The document includes all of the following strategies addressed throughout this chapter, with additional documentation and information available in 2018 RTP Appendix G.

## 6.2 Fresno COG RTP/SCS Advisory Committees

### Fresno COG's Regional Transportation Plan Roundtable

The Regional Transportation Plan (RTP) update process was formally launched in October 2016 with the first Fresno COG RTP Roundtable meeting. The Roundtable supports Fresno COG staff and its standing committees in

preparing the 2018 RTP/SCS. They considered issues that supported RTP/SCS development, providing comments and community-based consensus. The Roundtable was comprised of 30 seats – 12 held by member agency staff, 15 seats open to a variety of stakeholder groups and three “at large” seats.

The RTP Roundtable members participated in 13 monthly meetings between October 2016 and January 2018, guiding RTP/SCS development and acting in an advisory capacity to Fresno COG’s Policy Board. Minutes and agenda packets from all of the RTP Roundtable meetings are available on Fresno COG’s website.

The RTP Roundtable received several informational presentations from Fresno COG staff on RTP and SCS issues such as the following:

- RTP and SCS background and history
- 2014 RTP implementation
- Greenhouse gas reduction targets
- Demographic forecasts
- RTP scenario development - context, concepts and visions
- Environmental Impact Report updates
- Public outreach input and survey results
- Safety performance targets

The RTP Roundtable was also asked to review and approve several key RTP requirements and procedures including:

- Public Participation Plan and RTP Public Outreach Strategy
- Scenario development
- SCS indicator selection
- RTP Outreach “mini-grant” selections and recommendations
- Growth projection changes
- Important farmland, land consumption and environmental justice (EJ) indicators
- RTP Financial, Action and Policy Elements
- Greenhouse gas target recommendation to the Air Resources Board

Table 6-1: 2018 RTP Roundtable Committee Listing

Agency or sector	Representative
City of Clovis	Dwight Kroll
City of Coalinga	Sean Brewer
City of Fowler	David Peters
City of Fresno	Scott Mozier
City of Huron	Thomas Skinner
City of Kerman	Olivia Pimentel
City of Kingsburg	David Peters
City of Mendota	Charles Johnson
City of Orange Cove	Gary Horn
City of Reedley	Rob Terry
City of Selma	Frankie Olivares
County of Fresno	Mohammad Khorsand
San Joaquin Valley Air District	Jessica Schlosser
LAFCo	David Fey, Chair
Caltrans	Michael Navarro
Public Transportation - Urban	Jim Schaad, Fresno Area Express
Public Transportation - Rural	Moses Stites, Fresno County Rural Transit Agency
Valley Planners Network	Eric VonBerg, Rincon Consultants
Building/Development	Mike Prandini
Environmental Justice	Amanda Monaco, Leadership Counsel for Justice and Accountability
Environment	Adam Livingston, South Sierra Partnership
Active Transportation	Nicholas Paladino, Fresno Cycling Club
Health Advocate	Joe Prado, Fresno County Department of Public Health
Broad-based business	Mike Ratajski, Quad Knopf, Inc.
Water Agency	Paul Peschel, Kings River Conservation District
Education	Robert Morse, Central Unified School District
Measure C Citizen Oversight Committee	Joe Denham, Denham Personnel
Public-At-Large	1. Michelle Garcia
	2. Kent Karsevar, Ronald McDonald House Charities
	3. Roger Brown, Building Youth Tomorrow Today

- Specific outreach strategies and schedules
- SCS scenario development and preferred scenario selection
- RTP project funding scenarios and scoring criteria
- All RTP and SCS comment letters received and responses provided

The RTP Roundtable began forming Sustainable Communities Strategy scenarios during a mini-workshop at the February 2017 Roundtable meeting, during which members discussed four draft scenario concepts. Staff developed the concepts based on public input received during 2014 RTP development and during the subsequent Transportation Needs Assessment Study completed in July 2016. For more information on scenario development see Chapter 3: Sustainable Communities Strategy.

The RTP Roundtable discussed and developed strategies and investment areas best aligned with each scenario's vision. The results of those discussions helped Fresno COG staff to more fully develop detailed descriptions of each scenario.



### Environmental Justice Advisory Committee

The Environmental Justice Advisory Subcommittee is structured to serve as a subcommittee of Fresno COG's Transportation Technical Committee (TTC), enjoying the benefits of a formalized process as its findings feed into Fresno COG's standard committee process. The subcommittee generally meets when Fresno COG staff, the TTC, the Policy Advisory Committee or the Fresno COG Policy Board requests recommendations on issues involving environmental justice (EJ) populations. It also meets to assist Fresno COG staff in setting thresholds for Environmental Justice Populations for the Environmental Justice Report within the 2018 Regional Transportation

Plan. The subcommittee reports all advisory actions to the TTC through an EJ representative. Then the TTC's recommendations are referred to the Policy Advisory Committee and Fresno COG Policy Board as needed. The committee also reported to the RTP Roundtable through the EJ's chair, who held a seat on the Roundtable.

The subcommittee has eleven positions to provide full, diverse and equitable representation from designated EJ populations:

#### Three Fresno COG member agencies representatives:

1. Local agency - urban
2. East side local agency - rural
3. West side local agency - rural

#### Four minority representatives for the following ethnicities representative of Fresno County's population:

1. Hispanic
2. African American
3. Asian
4. American Indian

#### Two low-income representatives

#### One senior (65 or older) representative

#### One person with a disability

The EJ Subcommittee met five times to define the parameters, thresholds and criteria for EJ communities. The following is a summary listing of those meeting's main topics:

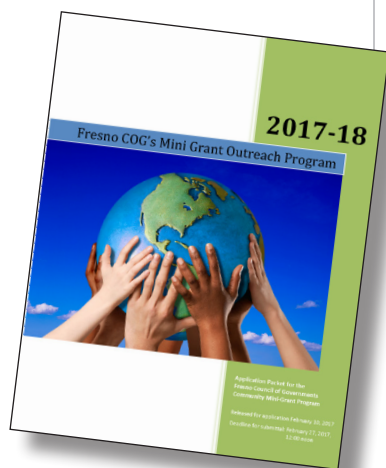
- Regional Transportation Plan: purpose and goals
- EJ indicator selection for the SCS scenarios
- Fresno COG's EJ analysis
- Federal definition of EJ populations
  1. Minority
  2. Low-Income
- Possibly expanding the EJ populations definition to include the following vulnerable communities:
  1. Elderly
  2. No vehicle availability

3. Single-parent household
  4. Housing cost burden: >30 percent household income spent on housing
  5. Educational attainment: over age 25 without a high school diploma
  6. Linguistic Isolation: no one in household speaks English “very well”
  7. Persons with Disability
- Fresno County demographics (focused on race & income levels)
  - Selecting EJ population parameters
  - EJ Thresholds and methodology
  - Performance indicators for EJ analysis
  - Review and comment on draft EJ Analysis

For detailed information on the Environmental Justice Process and Reporting please see RTP Chapter 7: Environmental Justice Report.

## 6.3 Fresno COG Mini-Grant Outreach Program

**Community Organization Partnerships** Fresno COG provided seven, \$5,000 “mini grants” for community-based organizations to assist COG staff in soliciting ongoing public input for key activities associated with the 2018 RTP/SCS. This extraordinary effort was developed to ensure that Fresno County residents, regardless of race, income, color or national origin had equal access to the information being developed for the SCS and ample opportunity to understand and provide meaningful input throughout the planning



process. Fresno COG staff exerted extra effort to engage underserved communities traditionally hard to reach.

Recipients received grant funding based on proposed outreach strategies, demographic and geographic coverage and expressed understanding of the mini-grant purpose. The partnerships included the following agencies listed in [Table 6-2](#).

**Table 6-2: 2018 RTP Mini Grant Outreach Recipients**

Public Health Institute — Cultiva La Salud
Fresno State Office of Community and Economic Development (OCED) (East County)
Fresno State OCED (North Fresno & Clovis)
Central California Environmental Justice Network (CCEJN)
Central California Asthma Collaborative
Tides Center/Leadership Counsel for Justice & Accountability
Fresno Building Healthy Communities

Mini-grantees began working in late March/early April 2017 and continued through the release of the draft 2018 RTP in spring 2018. They initially worked to encourage participation in the April 2017 Fresno COG RTP/SCS workshop and online survey. Then, each organization organized one or more of the 20 RTP transportation needs workshops in June 2017, handling workshop logistics while Fresno COG staff presented the information and gathered input. Mini-grant recipients were responsible for inviting attendees, publicizing the workshops, materials translation and arranging all needed workshop transportation, interpretation, child care and food.

During the fall 2017 SCS outreach phase, mini-grant groups helped locate and schedule community events or presentations throughout Fresno County. They also provided staff to man event booths and served as interpreters during presentations and one-on-one discussions with the public when necessary.



## 6.4 Community workshops

### Sustainable Communities Strategy Scenario Development Public Workshop

Fresno COG hosted an interactive public workshop in April 2017, inviting residents to share their vision for the region by expressing their priorities and values related to the scenarios. The workshop was held in Central Fresno with free Spanish interpretation, transportation, child care and dinner provided.

could view the intuitive presentation, answer the same workshop questions and submit comments. The online presentation and survey were available through May and June 2017.

Staff submitted demographic summaries, scenario survey results and comments from



88 workshop attendees and 412 online participants to the RTP Roundtable, TTC, PAC and Policy Board for review and consideration. Based on that input, the RTP Roundtable formed a subcommittee to modify the existing scenarios and propose updated scenarios for the Roundtable's consideration in May 2017.

Workshop and online input were not statistically valid, so while the outreach goal was to obtain input from a sampling of residents mirroring Fresno County's population demographics, it did not cover the region's exact demographics; in fact, the outreach results indicate statistical overrepresentation from several EJ populations. The workshop participants' data and comments reflect their opinions based on the data and information presented. All workshop and online survey results are available at [www.fresnocog.org/2018-regional-transportation-plan-public-outreach/](http://www.fresnocog.org/2018-regional-transportation-plan-public-outreach/).

The workshops and online forums were publicized through mini-grant recipeints, via email, television advertisement and partner websites. Fresno COG contracted with two local television stations to run broadcast and online advertisements prior to the meeting. Multiple e-mail blasts informed government agencies, businesses, community partners and the public. Fresno COG's website comprehensively displayed flyers, meeting materials and updates, while staff posted topics to Fresno COG's Facebook page regarding the public workshop, the RTP/SCS and how to get involved during the planning process.



During the workshop, COG staff unveiled draft SCS concepts A, B, C and D and explained their similarities and distinctions. Workshop attendees ranked priorities, housing types and transportation options. Participants also provided demographic data using clicker technology. Fresno COG planners availed themselves for question-and-answer sessions both during and after the formal presentation.

Fresno COG staff also developed online presentations in both English and Spanish, accessible through Fresno COG's website using MetroQuest software. The format provided a second means through which the public



**Demographic polling conducted revealed the following participant demographics:**

**Workshop - 73 percent minority:**

- 51% Hispanic or Latino
- 36% White
- 11% African American
- 3% Other

**Online - 36 percent minority**

- 20% Hispanic or Latino
- 64% White
- 2% African American
- 5% Asian
- 3% Other

**Education**

- 50% of workshop attendees held a bachelor's degree or higher
- 73% of online attendees held a bachelor's degree or higher

**The age of participants varied**

- 16% were 71 or older, online was 2%
- 33% were between the ages of 55-70, online was 32%
- 30% of workshop attendees were between the ages of 35-54, online was 42%
- 19% were between the ages of 18-34, online was 24%
- 1% were 17 or younger

**June 2017 RTP Project Suggestions Public Workshop**

Fresno COG staff, working with the seven RTP Mini-Grant recipient organizations, hosted 15 community workshops throughout the County between June 5 and July 6, 2017. Each of the 15 workshops included dinner, child care and Spanish presentations when needed, as well as translation and interpretation services. The June 2017 outreach efforts were focused on providing the public an opportunity to submit transportation project suggestions that could be considered by local agencies in response to Fresno COG's RTP call for projects issued July 1, 2017. In total, 516 people attended workshops with 413 of them participating in the workshop demographic survey.

Fresno COG also developed an online survey in English and Spanish to allow transportation project input for those who could not attend the workshops. The survey was available through July 9, 2017. In total, Fresno COG received online input from 92 participants.

Fresno COG and mini-grantees advertised the workshops via TV spots aired on KSEE 24 and KGPE 47, as well as interviews with Central Valley Today and Univision, a Spanish-language television station. In addition, staff posted fliers and other information to participating websites. Email blasts announcing the workshops went

June 2017 RTP Transportation Needs Workshop Schedule

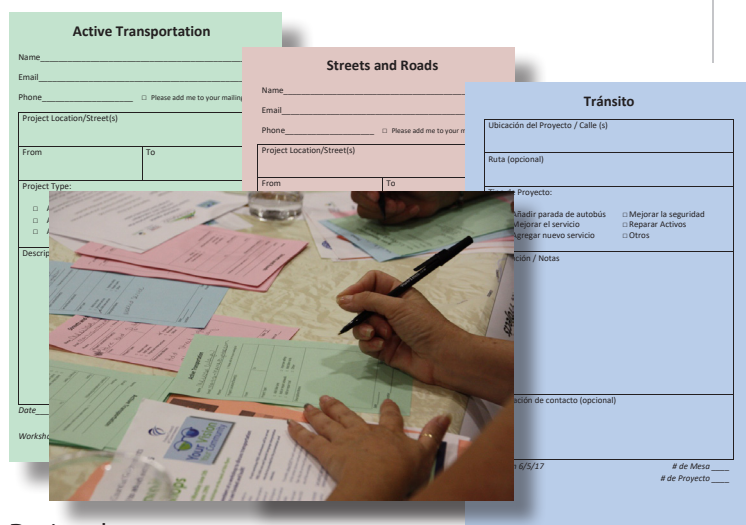
Sunday	Monday	Tuesday	Wednesday	Thursday	Friday	Saturday
June 4	5	6	7	8	9	10
	CCEJN @ Kerman, Kerman Community Center; 6-8pm			OCED-Fresno State (Mike) @ Clovis, Clovis Senior Center, 6-9pm		
11	12	13	14	15	16	17
	CCEJN @ Mendota, West Side Youth Center, 6-8 pm OCED-Fresno State (Mike) @ North Fresno, UC Merced Building, 550 E Shaw Ave, 6-9pm	CCAC @ Malaga, Malaga Elementary School, 5:30-7:30pm (Outreach to Malaga, Calwa) LCJA @ Lanare, Lanare Community Center, 5:30-7:30pm				
18	19	20	21	22	23	24
		OCED-Fresno State (Ismael) & Cultiva La Salud @ Orange Cove, Orange Cove Community Center, 6-8 PM (Outreach Audience: Orange Cove, Navalencia, Dunlap, Squaw Valley) CCAC, LCJA and CCEJN @ Sanger (LCJA and CCEJN inviting Tombstone residents), Jefferson Elementary School, 5:30-7:30pm	OCED-Fresno State (Ismael) & Cultiva La Salud @ Parlier Senior Center, 690 S. Newmark Avenue, 6-8pm (Outreach Audience: Parlier, Del Rey, Reedley)	Cultiva La Salud @ Reedley, Reedley Community Center, 6-8pm (OCED-Fresno State (Ismael) will support)		
25	26	27	28	29	30	July 1
		CCEJN in collaboration with OCED-Fresno State; Firebaugh, 6-8 pm. Location TBD.	Selma/Kingsburg/Fowler (Fresno COG)	Fresno BHC, Cultiva La Salud, and LCJA @ Central Fresno, Roosevelt High School, 5:30-7:30pm		
2	3	4	5	6	7	8
		HOLIDAY		Huron/Coalinga (Fresno COG)		

to Fresno COG's e-newsletter database, which includes 5,372 individuals and boasts a 20% documented open rate. Those announcements were also emailed to partner agency databases and shared through social media. Many organizations shared workshop information at regular meetings, and some had staff going door-to-door, canvassing neighborhoods.

workshops and through the online portal, Fresno COG received 1,218 suggestions for projects – 663 from workshop attendees and 555 from online participants in English and Spanish. The suggestions were separated into three categories:

- 1. Streets and Roads** – Repairing roads, adding lanes, improving intersections, improving safety, reducing congestion or “other;” 573 suggestions received
- 2. Transit** – Adding bus stops or new service, improving service, improving safety, repairing assets or “other;” 251 suggestions received
- 3. Active Transportation** – Adding bike lanes, adding or repairing sidewalks or trails, improving safety, adding bike racks, or “other;” 368 suggestions received

Fresno COG staff processed the workshop and online suggestions and forwarded all of them to appropriate local agencies for consideration. All Active Transportation suggestions were also provided to Fresno COG's regional Active Transportation Plan consultant for consideration.



During the



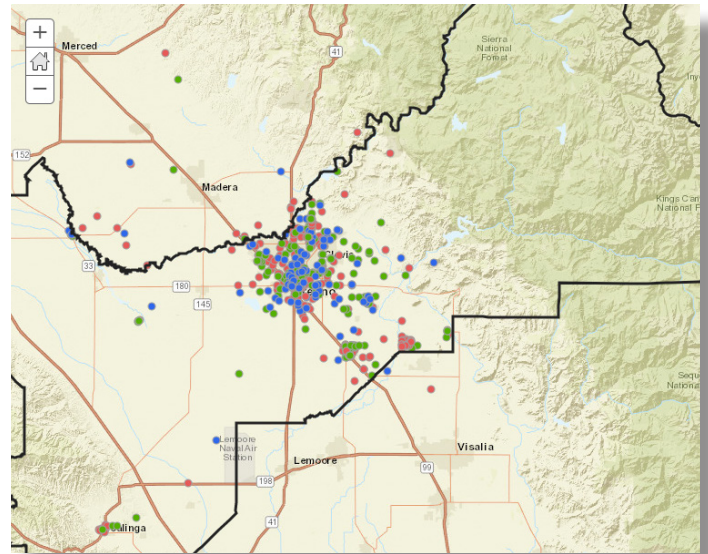
All of the project suggestions are available on Fresno COG's website, listed by community workshop location or online participation. In addition, a color-coded interactive map of online suggestions ([Figure 6-1](#)) is posted to the website enabling viewers to see where suggested projects are located.

The following table summarizes the demographic data received from polling workshop and online participants of the June 2017 effort, compared to Fresno County's regional demographics:

**Table 6-3: June 2018 Demographic Polling of Outreach Participants**

Participant Ethnicity	Percentage of Respondents	Fresno County Population
African American	2%	5%
Asian	5%	10%
Hispanic or Latino	73%	52%
Other	4%	3%
White	16%	31%
Participants with Bachelors Degree or higher	Percentage of Respondents	Fresno County Population
Total all participants	27%	20%
Participant Residence Location	Percentage of Respondents	Fresno County Population
East of Highway 99, non-urban area	36%	22%
Fresno or Clovis	35%	64%
West of Highway 99, non-urban area	23%	12%
Foothill or mountain area	3%	2%
Participant Age	Percentage of Respondents	Fresno County Population
71 or older	10%	7%
55-70	33%	15%
35-54	42%	24%
18-34	14%	26%
17 or younger	1%	29%

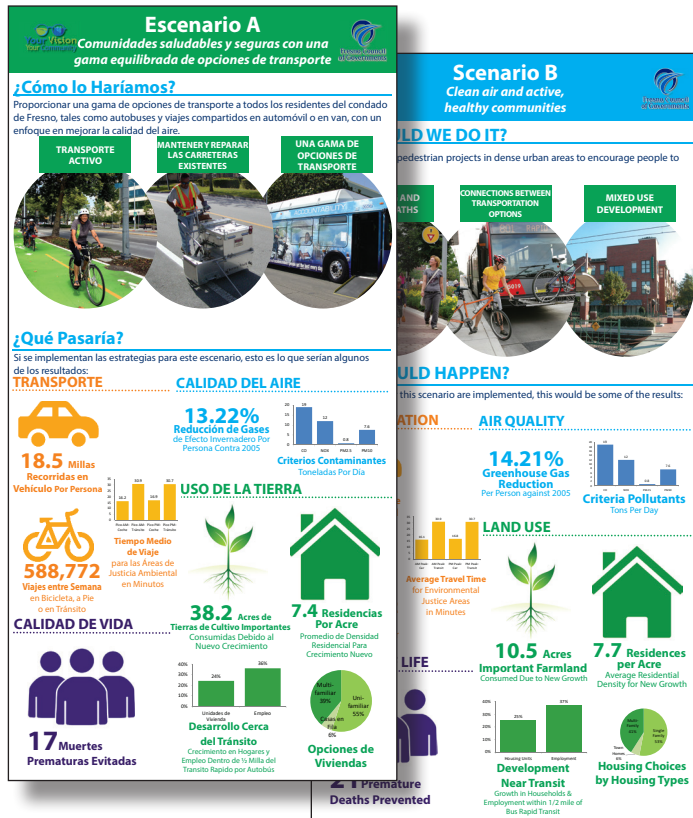
**Figure 6-1: MetroQuest Online Survey Projects Map**







SCS scenario indicator data results were depicted in graphic form and printed on handouts and large poster boards to use at events and presentations. See examples below:



Using these visuals and additional, detailed descriptions of the scenarios, staff walked participants through each scenario, pointing out differences between them and answering questions about each one. Each outreach strategy provided opportunity for participants to complete a Scenario Selection Card:

**SCENARIO SELECTION CARD**

Please tell us about you:

- What is your home zip code?
- What is your ethnic background? (circle one)
  - African American
  - American Indian
  - Asian
  - Hispanic or Latino
  - Pacific Islander
  - White
  - Other
- What is your household income?
  - Less than \$14,000
  - \$15,000 to \$20,000
  - \$25,000 to \$36,000
  - \$36,000 to \$50,000
  - \$50,000 and up
- How many people live in your household?
- Which scenario did you like best? (circle one)
  - Scenario A
  - Scenario B
  - Scenario C
  - Scenario D
- What did you like best about the scenario you chose?
- What negative impacts to your community, if any, do you foresee from the other scenarios? (please be specific)

With help from Fresno COG's RTP mini-grants, staff collected 1,339 completed scenario preference surveys from outreach events, online participation and staff presentations. Responses were received from residents living in 29 towns and cities, covering 50 zip codes throughout the Fresno County region.

A scenario-preference summary report was presented to the RTP Roundtable, Fresno COG's TTC, PAC and Policy Board prior to preferred-scenario selection. The summary report included scenario selection breakdowns by event type, by city/town, by zip code and a summary of comments supporting why participants preferred scenarios they selected. Staff also posted all results and comments to [www.fresnocog.org](http://www.fresnocog.org) for public review.

Demographic polling revealed the participant demographics summarized in Table 6-4 for the Fall 2017 effort, in comparison to Fresno County's regional demographics. Fresno COG's established goal is to effectively engage an overall demographic mirroring that of Fresno County. Minority participant representation totaled 78%, higher than Fresno County's minority population of 70%.

Table 6-4: Participant Ethnicity

Participant Ethnicity	Percentage of Respondents	Fresno County Population
African American	2%	5%
Asian	9%	10%
Hispanic or Latino	60%	52%
Other	8%	3%
White	22%	31%

Table 6-5: Participant Household Income

Household Income	Percentage of Respondents
< \$14,000	18%
\$15,000 - \$20,000	15%
\$25,000 - \$36,000	15%
\$36,000 - \$50,000	14%
\$50,000 and up	34%

Median respondent household income was \$36,000 - \$49,999 compared to the countywide median household income of \$45,563.

The survey outreach was designed to provide the RTP Roundtable, TTC, PAC and the Policy Board tools for understanding what Fresno County residents believe is important when planning for future growth and selecting a preferred SCS scenario. Survey results and the preferred SCS scenario selection process are outlined in RTP Chapter 3: Sustainable Communities Strategy.



## 6.5 Additional Public Participation

During the entire RTP planning process, Fresno COG's website held dedicated pages for SB 375, RTP, SCS, public participation, the RTP's financial element, calendar listings, agendas, data, links, presentations, results, videos, minutes, committee processes and various other listings. Staff made additional RTP/SCS presentations to community and business groups, chambers of commerce and service groups, as requested. In addition, Fresno COG posted event and public participation opportunities on the agency's Facebook page throughout the process, and they hosted or attended multiple meetings with school district personnel, stakeholders, residents and local agencies to clarify issues, share information and listen to needs and concerns. This includes speaking to Fresno COG's standing committees regarding the RTP/SCS on a monthly basis.

## 6.6 Public Comment

Fresno COG promoted methods by which the public could submit comments and/or access information at their convenience:

- Workshop or meeting attendance open comments
- Workshop or event comment forms
- Staff contacts on Fresno COG's website
- Universal email address provided for all comments: [comment@fresnocog.org](mailto:comment@fresnocog.org)
- By phone at 559-233-4148
- By Fax at 559-233-9645
- Via U.S. mail

## 6.7 Consultation

The United States Department of Transportation defines consultation as: "one or more parties confer with other identified parties in accordance with an established process and, prior to taking action(s), considers the views of the other parties and periodically informs them about action(s) taken." Some areas of consultation could include transportation, land use, employment, economic development, housing, community development and environmental issues.

Existing federal regulations require Metropolitan Planning Organizations (MPOs) to consult with resource agencies, State and local agencies responsible for land use management, environmental protection, conservation, historic preservation and Native American Tribal Governments concerning the development of the Regional Transportation Plan. MPOs must seek input/comments from resource agencies early in the planning process to prevent project delays at a later time. In other words, consulting with resource agencies early in the planning process may lead to better coordination, minimal litigation, possible project cost savings and an upfront understanding of resource agency issues. [Table 6-6](#) is a list of resource agencies that Fresno COG contacted for early consultation during the development of the RTP.



Table 6-6: Table of agencies Fresno COG consulted during RTP development

<b>Federal Agencies:</b>	
Centers for Disease Control and Prevention	U.S. Department of Agriculture
Federal Highway Administration	U.S. Department of the Interior, Office of Environmental Policy and Compliance
Federal Railroad Administration, Office of Policy and Plans	U.S. Department of Transportation
U.S. Department of Agriculture, Forest Service, and Natural Resources Conservation Service	U.S. Environmental Protection Agency, REGION IX
Federal Transit Administration	U.S. Department of Energy
Naval Air Warfare Center Weapons Division	U.S. National Park Service, Pacific Great Basin System Support and Pacific West Region
U.S. Army Corps of Engineers Sacramento and San Francisco Districts	U.S. Fish and Wildlife Service
<b>State Agencies:</b>	
California Air Resources Board	California Public Utilities Commission
California Environmental Protection Agency, IAC	California Transportation Commission
California Department of Health Services	Caltrans - Headquarters, Districts 6 & 10, Division of Aeronautics Division of Rail
California Department of Housing and Community Development	Governor's Office of Planning and Research
California Highway Patrol	California Department of Fish and Wildlife Environmental Services Division
<b>Tribal Governments - All were invited to fill a seat on the RTP Roundtable:</b>	
Cold Springs Rancheria of Mono Indians	Dunlap Band of Mono Historical Preservation Soc
Dumna Wo-Wah Tribal Government	Big Sandy Rancheria
Dunlap Band of Mono Indians	Kings River Choinumni Farm Tribe
Dumna Wo-Wah Tribal Government	North Fork Mono Tribe
California Choinumni Tribal Project	Sierra Nevada Native American Coalition
California Native American Indians	Santa Rosa Indian Community of the Santa Rosa Rancheria
Haslett Basin Traditional Committee	Mono Nation
Picayune Rancheria of Chukchansi Indians	Squaw Valley Tribe
Tule River Indian Reservation	Table Mountain Rancheria
Michahai Wuksachi Band of Eshom Valley	Wuksachi Tribe - Sierra Foothills
<b>Regional Agencies:</b>	
Association of Monterey Bay Area Governments	Sacramento Area Council of Governments
CalStart	San Diego Association of Governments
Inyo County Planning Department and Public Works	San Joaquin Council of Governments
Kern Council of Governments	San Joaquin Valley Air Pollution Control District
Kings County Association of Governments	San Luis Obispo Council of Governments
Local Agency Formation Commission	Southern California Association of Governments
Madera County Transportation Commission	Stanislaus Council of Governments

Table 6-6 continued: Table of Agencies Fresno COG consulted with during RTP development

<b>Rail:</b>	
Union Pacific Railroad	BNSF Corporation
High Speed Rail Authority	San Joaquin Valley Railroad
<b>Aviation:</b>	
Airport Land Use Commission	New Coalinga Municipal Airport
Caltrans - Division of Aeronautics	Reedley Municipal Airport
Firebaugh Airport	Selma Airport
Fresno Chandler Executive Airport	Sierra Sky Park Airport
Fresno Yosemite International Airport	William R. Johnston Municipal Airport
Harris Ranch Airport	NAS Lemoore
Coffman Associates	
<b>Schools and School Districts:</b>	
Central Unified	Mendota Unified
Fowler Unified	Malaga Elementary
Kings Canyon Unified	California State University Fresno
State Center Community College District	Center for Archaeological Research, CSU Bakersfield
Clovis Community College	ITE Student Chapter, Fresno State
Office of Community & Economic Development, Fresno State	
<b>Transportation Agencies:</b>	
CalVans	Fresno Area Express
Fresno County Rural Transit Agency	Valleyrides
YARTS - Yosemite Area Regional Transit	
<b>Other Agencies and Organizations:</b>	
Pacific Gas and Electric	Economic Development Corporation
California Native Plant Society	Fresno Housing Authority
California Trucking Association	Fresno State Sustainability Club
California Wildlife Federation	Catholic Church Parents Group
Sierra Club Mineral King Group	Westpark Community
Center for Archeological Research CSU Bakersfield	Sanger Rotary
Commander, Naval Air Warfare Center Weapons Division	Fresno Building Healthy Communities Hub Collaborative
Social Service Transit Advisory Council	Bitwise
Building Industry Association	Leadership Counsel for Justice and Accountability
Fresno Chamber of Commerce Government Affairs Committee	Central California Asthma Collaborative
Central California Environmental Justice Network	Cultiva de Salud
Measure C Citizen Oversight Committee	Fresno Building Healthy Communities
<b>Other:</b>	
Representatives of people with disabilities: SSTAC and Clovis Senior Center	Representatives of users of pedestrian walkways and bicycle transportation facilities: Fresno Cycling Club and the Bicycle Advisory Committee
Developers and Building Industry Representatives	