

Steering Committee Meeting #3

Fresno County Mobility Hubs Feasibility Study

February 25, 2025



Accessible EV Mobility and Infrastructure For All



SOUTHWEST STRATEGIES



Steering Committee Meeting #3 Agenda

- Project basics refresher
- Tasks underway and upcoming
- Public outreach snapshot
- Map analytics methodology and outputs
- Site selection: ID'ing Short List underway
- Preview of “due diligence” Memo 3d



Project Background

Project Basics

- **Four sites:** Fresno, Clovis, and two in other cities or rural places
 - In-depth site opportunity and selection process
 - Establish local partnerships for implementation
 - Expecting each to have different mobility needs and hub purposes
- **Mobility Hub concepts:** design, programming, operations, cost estimation
 - Improve options for local and regional transportation
 - Realistic to implement and clear next steps towards development
 - Prototypes as models for the County, State, and nation
- **Extensive public outreach**
 - Shaping site selection and hub services - defining Hubs for the County
 - Early project task to define why, how, and with whom

Keep These Points in Mind About the Study

- **The Site Selection Process is a Deliverable**
 - Identifies the available and most relevant data
 - Develops a framework for prioritizing factors
 - Gets you thinking about synergies
 - Creates a layperson and technical language to discuss hubs
- **The Four Sites Should Explore a Range of Services and Implementation Methods**
 - We will optimize each of the four sites, but also want the four sites to collectively demonstrate a wide range of Fresno County hub ideas
- **Focus on Feasibility**
 - Expect each of the Short List and Final Four sites to have high feasibility factors and low feasibility factors - low feasibility is a finding, not a failure

Project Team Roles

Local Agencies' Roles



Co-manage the project

Build the vision for Fresno County mobility hubs

Guide project objectives and site selection

Interpret public and stakeholder input

Vet methods, assumptions, and findings

Coordinate Committee and Board review

Bring realism about implementability and post-Study next steps

Consultants' Roles



SOUTHWEST STRATEGIES

- Project management
- Location selection
- Hub programming
- Design concepts
- Plan and action steps

- Mobility assessments
- Location selection
- Hub programming
- First/last mile linkages
- Plan and action steps

- Community context guidance
- Partnerships
- Regional mobility
- Action steps planning

- Public participation
- Project promotion
- Guiding community communications

WITH
Lazar Translating & Interpreting
Dumont Printing

Steering Committee Roles



1. Provide perspectives from viewpoints beyond what the day-to-day project team offers.
2. Gut-check the processes to look for holes and faulty thinking, and review the Study's progress towards useful findings.
3. Help expand the reach of the Study to other communities, project teams, partners, agencies, staff, and implementers.

Steering Committee: Project Touchpoints

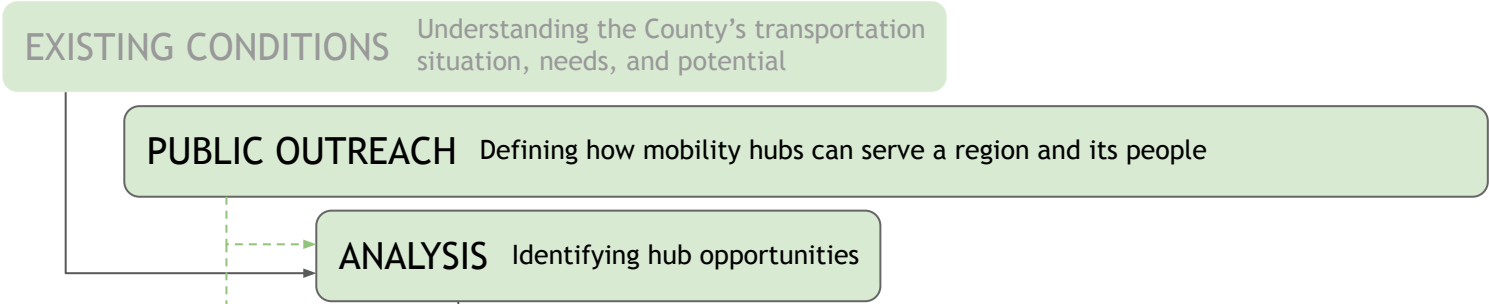
UP TO SEVEN MEETINGS (through the end of 2025)

1. Introductions, roles, needs and opportunities, brainstorming (Aug 2024)
2. Guiding public outreach and advising on existing conditions (Nov 2024)
3. **Reviewing the location analysis framework**
4. Reviewing the proposed four study sites (tentatively April 2025)
5. Shaping Hub uses, programming, services, and design
6. Guiding implementation planning
7. Reviewing the study findings, conclusions, and action recommendations

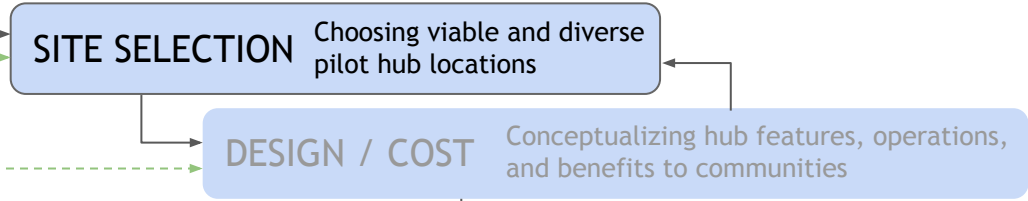
Project Tasks

Project Phases and Sequence

(1) INVESTIGATING AND DEFINING



(2) MOBILITY HUB CONCEPT DEVELOPMENT



(3) MOVING TOWARDS IMPLEMENTATION



Tasks Underway

- **Current**

- Task 1e: Draft Existing Conditions Report - to FCOG 2/19/25
- Task 2f: Survey - closed 1/31/25, analysis underway
- Task 2k: Mini report on survey result location suggestions
- Task 3a: Mapped location analysis review (<https://altaplanning.egnyte.com/fl/YspMdZcEwu> Password: Y5N1AK88)

- **Ongoing**

- Task 2h: Round 1 Stakeholder Interviews

- **Upcoming**

- Task 3a: Map Analytics Methods and Outcomes memo (draft to FCOG late March)
- Task 3b: Implementation Guidelines memo (draft to FCOG late March)
- Task 3d: Prioritization and Features memo (Short List “due diligence”, early April)
- Task 4a: Steering Committee #4 - April 2025 (Short List → Final Four)
- Task 4b: Site Selection memo (Short List → Final Four)

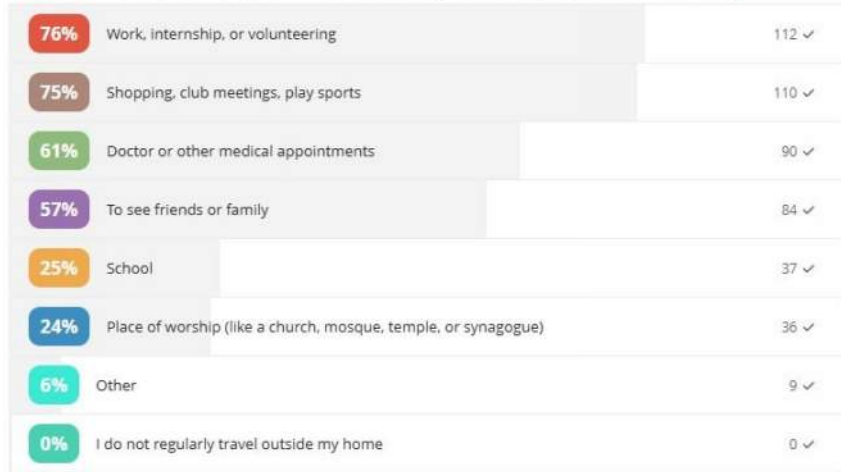
- **Pre-Planning**

- Task 4c: Basis of Design Report - set objectives for hub concept designs
- Task 2j: Round 2 Stakeholders (four sites) - Spring-Summer 2025
- Task 2i: Community design workshops - Summer 2025

Public Outreach

Community Survey Analysis: Current Travels

When you leave your home, where do you usually go? (Check all that apply)



147 Respondents

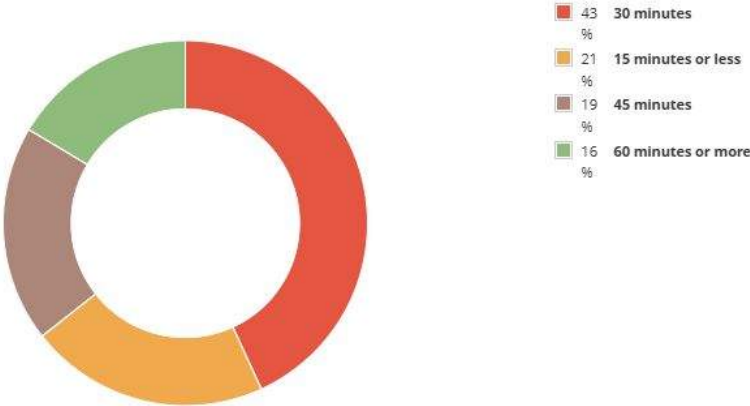
Please select all the methods of travel you have used in the past 14 days to make any of the trips listed above. (Check all that apply)



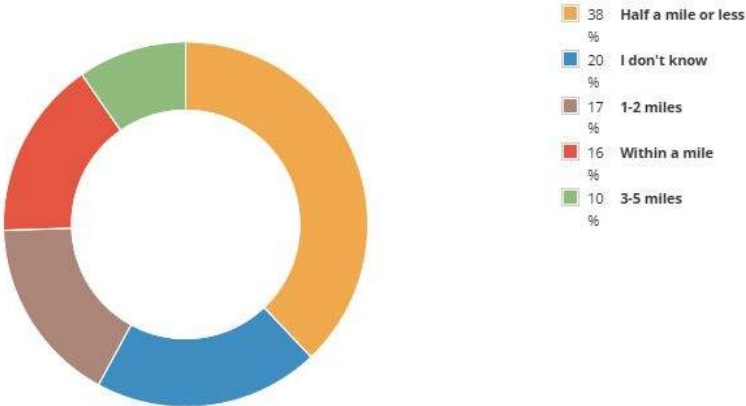
To Do: Parse by place of residence

Community Survey Analysis: Current Travels

How long does it take you to travel to and from these places? (Roundtrip)



How far is the nearest bus or transit stop from your home?



To Do: Parse by place of residence

Community Survey Analysis: Hub Features

What types of services or features would you like to see at a mobility hub? (select up to 3)

58%	Places to sit	82 ✓
53%	Public bathrooms	75 ✓
47%	Shelters with roofs	66 ✓
35%	Wi-Fi and phone charging stations	50 ✓
34%	Coffee shops or food trucks	48 ✓
18%	Grocery or convenience stores	25 ✓
16%	Safe bike parking	23 ✓
9%	Other	12 ✓
7%	Playgrounds	10 ✓
3%	Daycare	4 ✓
1%	Medical clinics	2 ✓

Which of these features would make you more likely to use a mobility hub? (select up to 3)

59%	A safe and comfortable place to wait for buses, shuttles, and rideshares	78 ✓
40%	Displays that show routes, schedules, and real-time arrival information	53 ✓
39%	Frequent, reliable bus trips that don't require changing buses	51 ✓
33%	A safe place to park your car while using public transit, carpooling, or renting bikes/scooters	43 ✓
32%	Quality sidewalks and bicycle route to and from the hub	42 ✓
21%	The ability to rent an electric bike, scooter, or car	28 ✓
19%	A safe place to park your bicycle or scooter while using public transit, carpooling, rideshare, or other ways of traveling	25 ✓
19%	Passenger pick-up and drop-off areas for ridehailing, microtransit, and other transit	25 ✓
18%	Electric vehicle (EV) charging stations, including for cars, bikes, and scooters	24 ✓

Community Survey Analysis: Hub Location Ideas Summary

General

- At libraries, health centers, schools
- Shaw corridor

Clovis

- Landmark Transit Center
- Clovis Community Hospital
- Clovis Commons, Sierra Vista Mall

Fresno

- Fresno State
- Near Hwy 180
- Wide variety of int'x in Fresno city
- Amtrak / Greyhound station
- Tower District
- Downtown Fresno
- Malls: Riverpark, Manchester

Rural

- Kerman (heart of West County)
- Kingsburg (gateway to East County)
- Reedley (St. Anthony Church, pocket park)
- Fowler
- Selma - Shafer Park
- Mendota - 7th and Riofrio

Community Survey Analysis

Fresno Residents (44 Commenters)		
Recommended Location	Occurrence	Upvotes
Downtown	10	10
Tower District	6	7
College Campuses (General)	5	3
Fresno State	4	0
River Park	4	0
Fresno Courthouse	3	4
Malls (General)	3	0
Hospitals (General)	3	0
180 and Fowler	2	1
City of Sanger	2	0
Millbrook and Cedar	2	0
Old Town Clovis	2	0
City of Kerman	2	0
Fig Garden Village	2	0
Cedar and McKinley	1	7
Chinatown	1	7
Jensen and Golden State	1	2
Maple and Church	1	0
City of Fowler	1	0
Palm and Shields	1	0
High School Campuses (General)	1	0
Shaw and Brawley	1	0
Fashion Fair	1	0
Veterans Hospital	1	0
Manchester Center	1	0
Chestnut and Cesar Chavez	1	0
Willow and Shepherd	1	0
Rolinda	1	0
Herndon and 99	1	0
Fresno City College	1	0
Shaw and Grantland	1	0
Herndon and Cedar	1	0
Herndon and Willow	1	0
Pottle and Mono	1	0
Shaw and Minnewawa	1	0
Sierra Vista	1	0
Sunnyside	1	0
Libraries (General)	1	0

Kerman Residents (2 Commenters)		
Recommended Location	Occurrence	Upvotes
City of Kerman	1	1
City of Mendota	1	0

Kingsburg Residents (5 Commenters)		
Recommended Location	Occurrence	Upvotes
City of Reedley	2	2
River Park	2	0
Fashion Fair	2	0
City of Kingsburg	1	2
Fresno Courthouse	1	0
Fresno State	1	0
City of Clovis	1	0

Reedley Residents (3 Commenters)		
Recommended Location	Occurrence	Upvotes
Reedley College	2	6
City of Fowler	1	0

Sanger Residents (1 Commenter)		
Recommended Location	Occurrence	Upvotes
Shafer Park	1	0
Sierra Vista	1	0

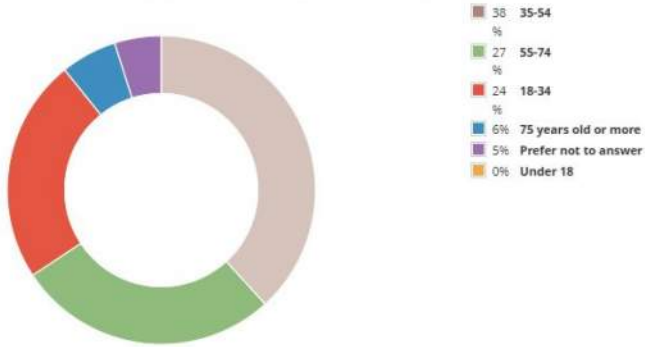
Selma Residents (6 Commenters)		
Recommended Location	Occurrence	Upvotes
City of Kingsburg	2	4
City of Selma	2	0
City of Reedley	1	1
City of Dinuba	1	1
City of Orange Cove	1	1
City of Oroshi	1	1
Reedley College	1	0
Frankwood and Manning (Reedley)	1	0
Fresno Courthouse	1	0
Fresno State	1	0

Clovis Residents (6 Commenters)		
Recommended Location	Occurrence	Upvotes
Fresno State	2	10
College Campuses (General)	1	10
Clovis Community Hospital	1	0
Clovis Community College	1	0
Sierra Vista (Shaw and Clovis)	1	0
Clovis Commons (Herndon and Willow)	1	0
Old Town Clovis	1	0
Downtown Fresno (Courthouse)	1	0
Downtown Fresno (Train Station)	1	0

Outside Counties (20 Commenters)		
Recommended Location	Occurrence	Upvotes
River Park	3	2
City of Kingsburg	3	0
City of Reedley	3	0
City of Clovis	2	3
Fresno State	2	1
City of Kerman	2	1
Sunnyside	2	0
Fashion Fair	2	0
Downtown Fresno	2	0
Fresno Airport	2	0
Fig Garden Village	1	1
Herndon and Cedar	1	1
Herndon and 99	1	1
Woodward Park	1	1
Fresno Courthouse	1	1
Sierra Vista	1	0
Tulare and First	1	0
Shaver Lake	1	0
City of Sanger	1	0
Van Ness and Nevada	1	0
Blackstone and Ashlan	1	0
Cedar and Shields	1	0
City of Coalinga	1	0
Manchester Mall	1	0
Fresno City College	1	0
Clovis Community College	1	0
City of Fowler	1	0
City of Parlier	1	0
Brewery District	1	0
Tower District	1	0
Old Town Clovis	1	0

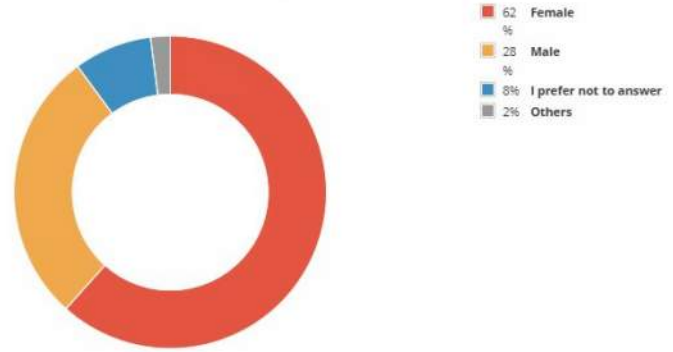
Community Survey Analysis: Demographics

Which category best describes your current age?



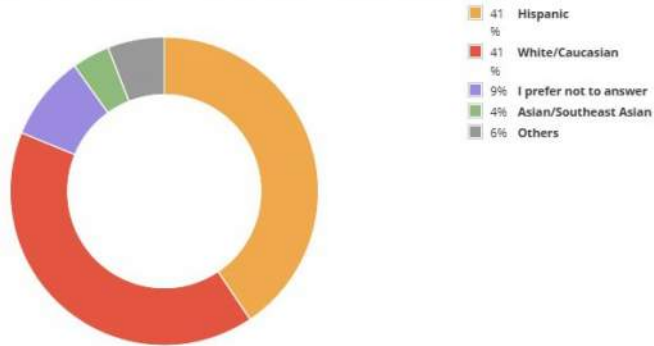
102 respondents

What is your gender?



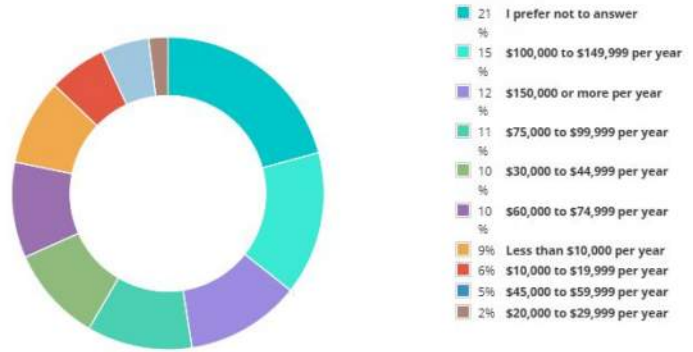
99 respondents

Which of the following most closely describes your ethnic background?



101 respondents

What is your combined household income?



101 respondents

- **Complete**

- City of San Joaquin (9/24)
- City of Clovis, add'l staff (9/24)
- Reedley College (9/25)
- City of Fresno, add'l staff (9/25)
- Fresno Housing (12/19)
- City of Fresno Planning (12/23)
- Self Help Enterprises (1/3)
- Fresno EDC (1/7)
- Fresno Metro Black Chamber of Commerce (1/13)
- State Center Community College District (1/15)
- Cecil C. Hinton Center (2/13)
- Regenerate California, Rural Communities Rising (2/19)
- USGBC Central California (2/20)

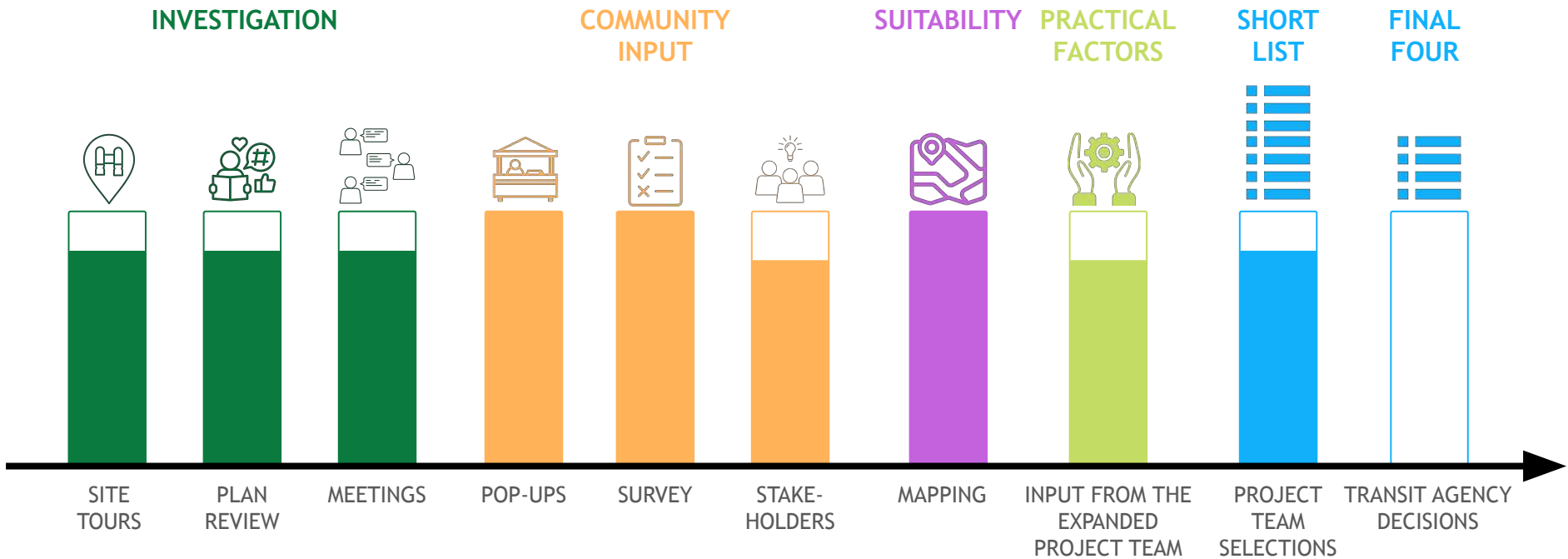
- **Upcoming**

- City of Fowler (3/4)

Map Analysis

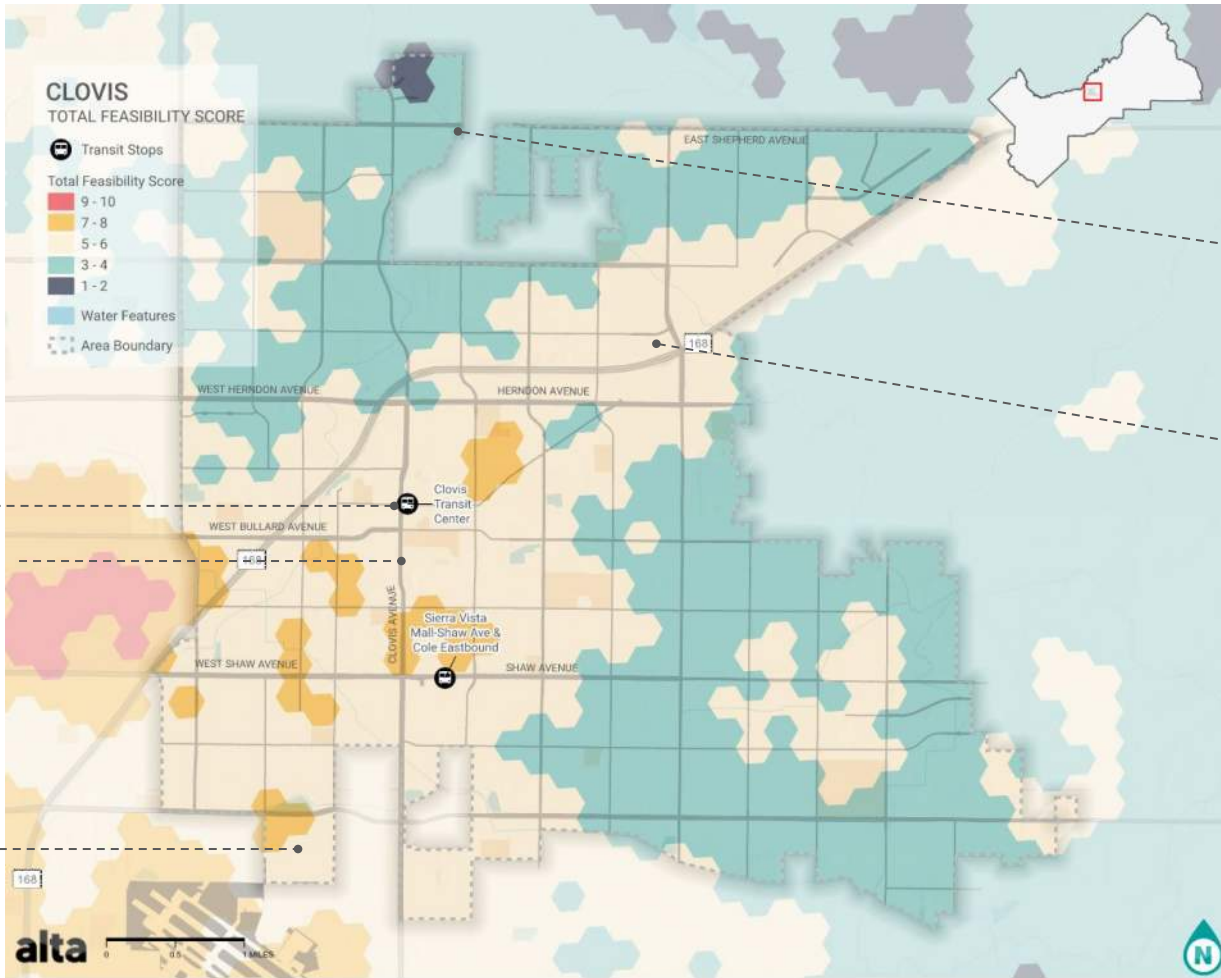
Site Selection

Site Selection Framework



Clovis Shortlist

Clovis In-Progress Short List



1. Dry Creek Trailhead

2. Hwy 168 / Temperance Park and Ride

3. Landmark Transit Center

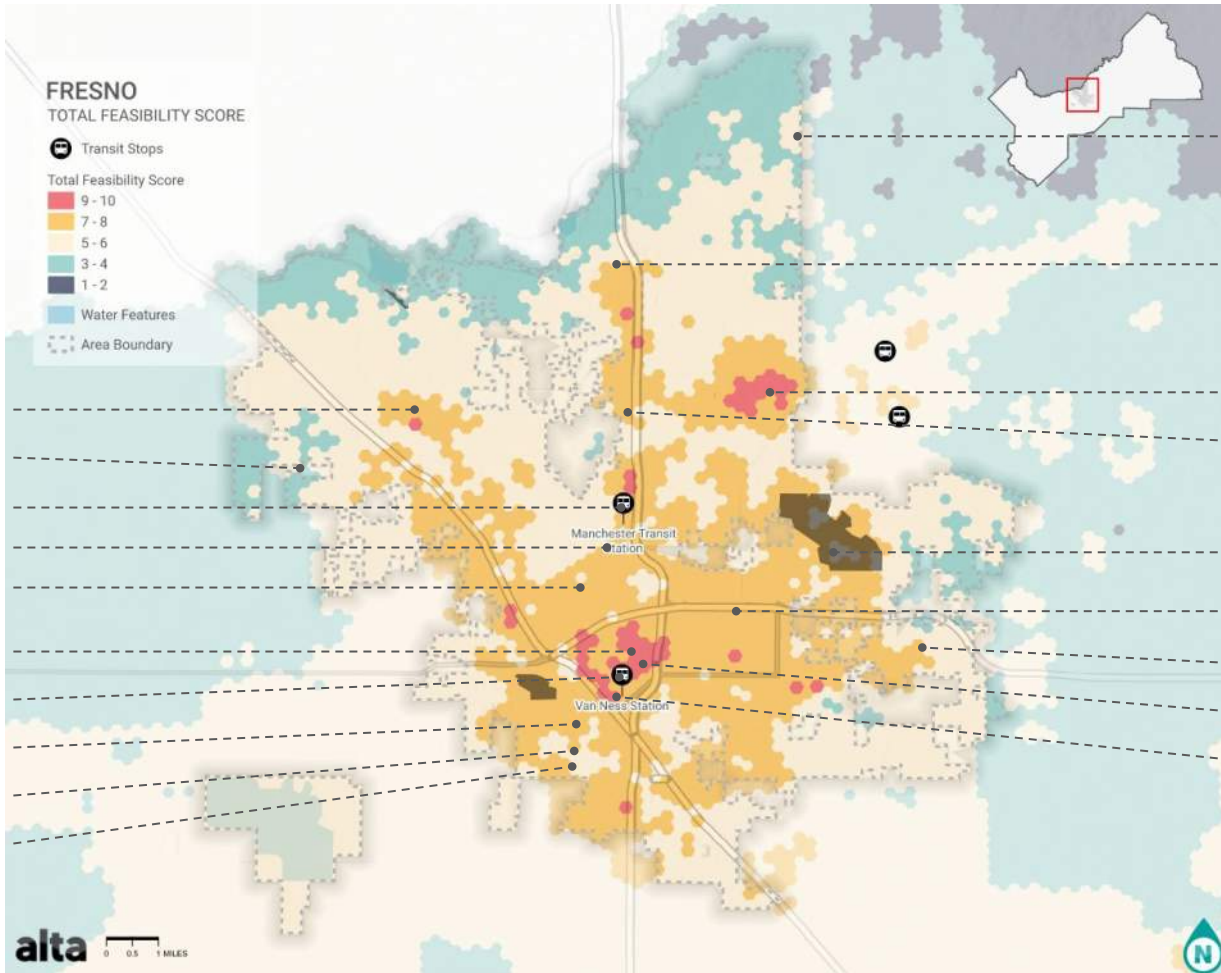
4. Dept. of Social Services Campus

Clovis In-Progress Short List

MAP #	LOCATION	CURRENT USE	SITE CONTROL	STAKE-HOLDERS	SIZE	MAP SCORE	OPPORTUNITIES / CHALLENGES
1	Dry Creek Trailhead N Sunnyside Ave & E Shepherd Ave	City Park; trailhead	Clovis Parks, Does Clovis Transit control part of site?	City of Clovis Tim Breshears	-2.3 ac.	3-4	Potential prototype of suburban, lower-density Hub concept Future microtransit Pick Up Location #1 Proximity to suburban residential; trail network <i>This site presents challenges as a transit hub due to limited EV infrastructure, parking constraints, and the absence of nearby goods or services.</i>
2	Hwy 168 / Temperance Park and Ride 790 N Temperance	Caltrans Park-n-Ride	Caltrans	None attempted yet	-1.3 ac.	5-6	Near Cal Health Sciences University and Community Medical Center Terminus of future Pink and Green routes; Microtransit Drop Off #2 <i>While close to CHSU and CMC, this site lacks a direct connection. The nearby park and ride's popularity is uncertain, restrooms are currently locked, and there are no all-weather shelters. Additionally, developing this site would reduce the existing parking availability.</i>
3	Landmark Transit Center 785 3rd Street	Transit Center Parking	City owned	City of Clovis / Transit	-38,000sf	5-6	Near Old Town Clovis; connections to City Trails network Service for three future bus route: Red, Yellow, and Purple Bike shelters; EV charging on Veterans Pkwy (to south) <i>This is the most promising location due to its excellent accessibility for Clovis Transit, FAX, rideshares, bicyclists, and pedestrians. It offers ample parking (including EV options), all-weather shelters, restrooms, and water filling stations. Its proximity to Old Town provides access to year-round events, dining, shopping, and healthcare. Additionally, temporary WiFi could be offered until the new library is built, and it presents opportunities for direct line services to Community Hospital and Downtown Fresno.</i>
4	Department of Social Services Ashlan / Peach / Dakota area	County offices; private industry; retail, parking	Various - County, private	Reno Coletti Cook Land Development	-110-140 ac.	5-6 and 7-8	Future bus service: Orange, Blue, and Yellow lines Jobs concentration; some residential proximity <i>This location is relatively remote and unlikely to attract visitors without a specific purpose. Additionally, this site will require coordination with the County.</i>

Fresno Shortlist

Fresno In-Progress Short List



- 4. W. Shaw / Brawley
- 6. W. Ashlan / Hayes
- 7. Manchester Transit
- 8. Fresno City College
- 10. Tower District
- 12. Comm. Reg. Med. Ctr.
- 15. Courthouse Park T.C.
- 17. Fresno Housing Auth.*
- 18. FCC - West Center
- 19. West Creek Village

- 1. Clovis Community Coll.
- 2. Riverpark Mall
- 3. CSU - Fresno State
- 5. Blackstone / Shaw
- 9. Fresno / Yosemite FAT
- 11. Cedar / Hwy 180 area
- 13. Fancher Creek Transit*
- 14. Amtrak Station
- 16. High Speed Rail Sta.*

*Planned / Concept

Fresno In-Progress Short List

MAP #	LOCATION	CURRENT USE	SITE CONTROL	STAKEHOLDERS	SIZE	MAP SCORE	OPPORTUNITIES / CHALLENGES
1	Clovis Comm. Coll.	College Campus, expansion underway	SCCCD	In contact w/ SCCCCD	-110 ac.	5-6	FAX route 3; Clovis Transit route Blue future line
2	Riverpark Mall ¹	Retail, parking,	Various	No specific contact attempted	-180 ac.	7-8	FAX routes Q BRT, 3, 26, 32, 34, 38, 58 Are current bus stops spread around (not hubbed)?
3	Fresno State ¹ Shaw Ave / Clovis Ave area	College Campus and off-site retail, housing	CSU System	No specific contact attempted	-370 ac.	9-10	Clovis Transit future Red line; FAX 9 line On-campus, nearby, or Campus Pointe opportunity
4	W Shaw / Brawley	Industrial and commercial	Various	No specific contact attempted	Pending	7-8 9-10	FAX routes 9, 12, 20, 41 Significant employment node; Challenging site access
5	Blackstone / Shaw	Commercial, major int'x	Various	No specific contact attempted; owner of NW corner (Vineyard Mkt); SW corner AHSC proj.		7-8	FAX routes Q BRT and 9 Near Northgate Shopping Center
6	W Ashlan & Hayes	Suburban resi.; rural ag.	Various	No specific contact attempted	N/A	7-8	FAX route 45 Mix of City and unincorporated jurisdiction
7	Manchester Transit Center ¹ N. Blackstone Ave north of E. Shields	Bus hub Next to large shopping mall	Within larger Ethan Conrad Properties parcel	No specific contact attempted	-0.75 ac.	9-10 7-8	Q line BRT corridor; 28 and 41 buses 800 housing units expected

Fresno In-Progress Short List

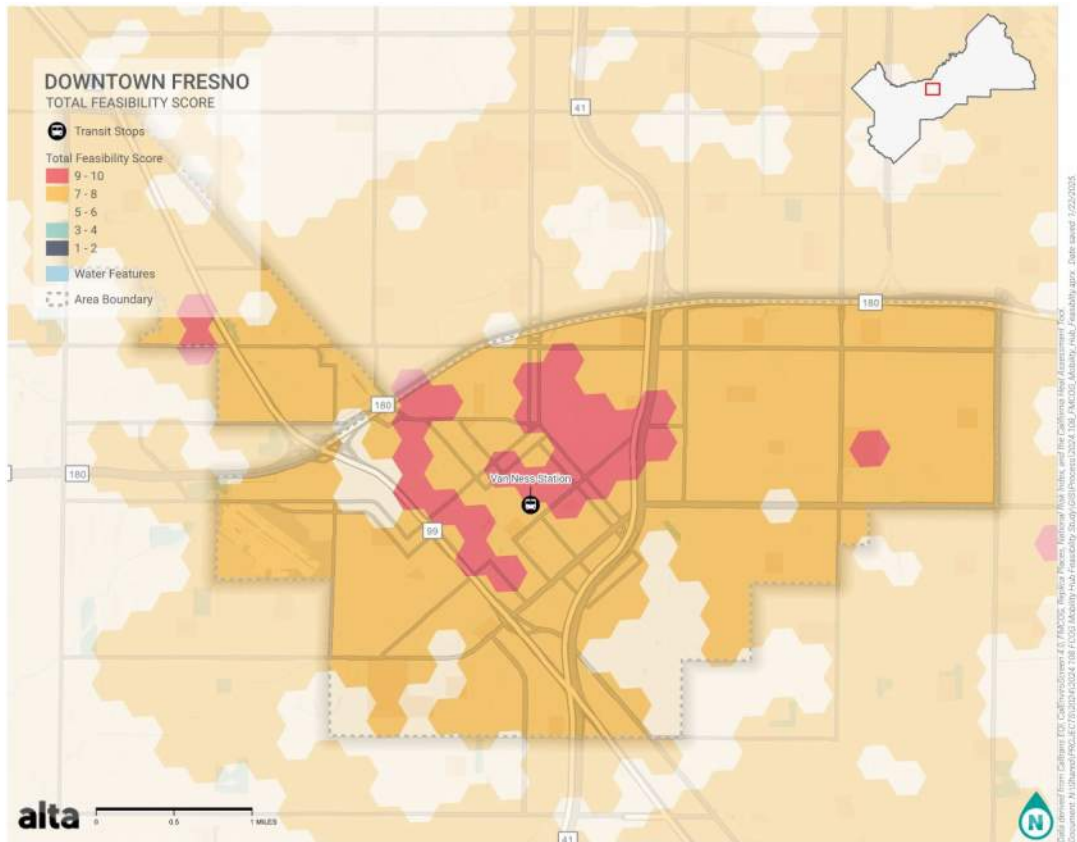
MAP #	LOCATION	CURRENT USE	SITE CONTROL	STAKEHOLDERS	SIZE	MAP SCORE	OPPORTUNITIES / CHALLENGES
8	Fresno City College Blackstone side?	College campus	SCCCD, or others if off-campus	In contact w/ SCCC	-85 ac.	7-8 5-6	FAX routes Q BRT, 20, 28, 39
9	Fresno /Yosemite Airport - FAT	International airport	City of Fresno	No specific contact attempted	Pickup area	7-8	FAX routes 26 and 39
10	Tower District Olive Ave area	Main street corridor	Various	No specific contact attempted	¼ - ½ miles	7-8 5-6	FAX 22, 26, 28, and 35 routes Centrally-located business and retail district; surrounding resi.
11	Cedar / Hwy 180	Hwy interchange area	City, Caltrans, others		N/A	7-8	FAX route 38 frequent service on Cedar; 33 and 35 nearby
12	Community Regional Medical Center	Hospital complex	Fresno Community Hospital and Medical Ctr, others	No specific contact attempted	-35 ac.	9-10	FAX Routes Q BRT and 32
13	Fancher Creek Transit Center E Tulare & Argyle	Partly vacant; office/warehouse	https://fanchercreek.com/	Kashian Development - not contacted so far	~1 ac.	5-6 7-8	FAX route 22 Planned component of new mixed-use district

Fresno In-Progress Short List

MAP #	LOCATION	CURRENT USE	SITE CONTROL	STAKEHOLDERS	SIZE	MAP SCORE	OPPORTUNITIES / CHALLENGES
14	Amtrak Station	Intercity rail and bus depot	City of Fresno	City, FAX, FCRTA, Greyhound, others	-3.8 ac.	9-10	FAX Routes 1 and 22 nearby; FCRTA; Greyhound
15	Courthouse Park Transit Center¹ Van Ness Ave	Transit Center; City park; County courthouse	Fresno County	City, FAX, FCRTA, County	-1.7 ac. transit use	9-10	Bus service (FAX and FCRTA) - Q BRT, 22, 26, 28, 32, 34, 38 Does not offer microtransit, bikeshare, ridehailing hub, etc
16	High-Speed Rail Station	Rail corridor; commercial and vacant lands	CA HSR Authority, City, private owners?	CA HSR Authority, City, private owners	-10 ac.	9-10	FAX routes 28, 32, 34, 38
17	Fresno Housing Authority Klette Ave / Cesar Chavez	Vacant	Fresno Housing?	In contact with Fresno Housing Auth	-2.5 ac.	7-8 and 5-6	Anticipated new FHA development site; potential BizWerks carshare Near FAX routes 32 and 38
18	FCC - West Campus	College campus - growth underway	SCCCD, or others if off-campus	SCCCD Cecil C. Hinton Center	-37 ac.	5-6	Near FAX routes 32 and 38
19	West Creek Village	Vacant land, several properties, planned dev'p	Blue Ocean Development	Blue Ocean Dev. Self Help Enterprises	-120 ac.	5-6	Near FAX routes 32 and 38

¹FAX staff indicate these need less investigation due to being well understood opportunities

Fresno Downtown

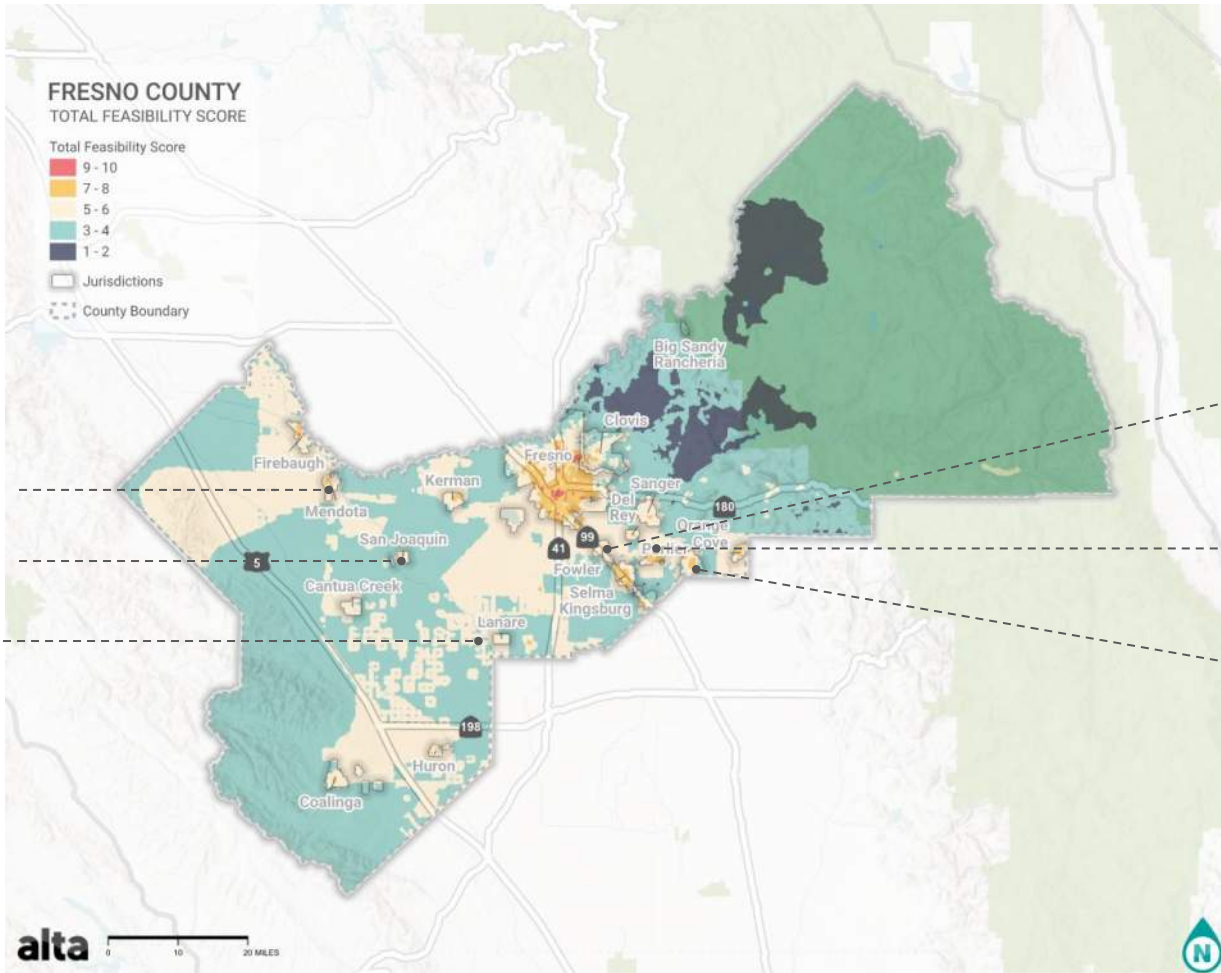


Created from California EIT Collaborative EIT Feasibility Study from Regional Risk Index and Best Practices Study / Assessment Study
Government: N:\Shared\ANGLE\07192014\024 EIT Feasibility Study\GIS\Process\2024_180_FACID0_Markup_HML_Feasibility.aprx Date saved: 5/22/2025

Note: Some jurisdiction extents were adjusted to zoom into areas of interest, not all of the boundaries are represented in these maps.

FCRTA Shortlist

FCRTA / Rural In-Progress Short List



1. Mendota Airport

3. San Joaquin Microgrid*

6. Lanare Comm. Center

2. Fowler

4. Parlier

5. Reedley

FCRTA / Rural In-Progress Short List

MAP #	LOCATION	CURRENT USE	SITE CONTROL	STAKE-HOLDERS	SIZE	MAP SCORE	OPPORTUNITIES / CHALLENGES
1	Mendota Airport 359 Airport Blvd	Airport is closed Racetrack, several small buildings	City owned	TBD	Large, ~1.8 ac. landside		Strong FCRTA relationship with City Central hub for West County microtransit and EV bus charging? Microtransit potential depending on future site uses
2	Fowler Library 306 S. 7th St Or other sites?	Library building, parking lot	County owned, City partnership	3/4/25 meeting upcoming with City staff	~0.8 ac.		Strong FCRTA relationship with City Existing transit; potential SR 99 transit expansion Health clinic, library (ARC solar), affordable housing, downtown
3	8747 S. Main St. San Joaquin	Vacant; potential hub/microgrid	City owned	Interested and active - Mayor and City Mgr	~7,500sf		Potential SW County microtransit hub (Cantua Creek, El Porvenir, Five Points, Kerman, etc.) Strong City partnership - resiliency hub in-progress Fresno Housing projects, Darden solar project, G.P Schools
4	Parlier Police Station	Various civic uses; private properties	County, City, or other	Vacant City Mgr	N/A currently		Strong FCRTA relationship with City Several East County FCRTA transit routes Parking lot near Police Dept.
5	Reedley Manning/Reed? Downtown?	Various	N/A currently	TBD	N/A currently		Strong FCRTA relationship with City Several East County FCRTA transit routes; high ridership Urban density; street grid; good walk/bike links
6	Lanare Community Center 20620 S. Grantland	Comm. Ctr. building, parking Ag / vacant	County (Water District?)	Leadership Counsel - yes Water District - not attempted	~4.2 ac.		Coalinga Intercity Transit (this site is not current stop); potential SW Fresno County microtransit Opp. to explore Hub prototype in unincorporated rural area Requires County coordination; low-density area

Fowler (FCRTA brainstorm list)

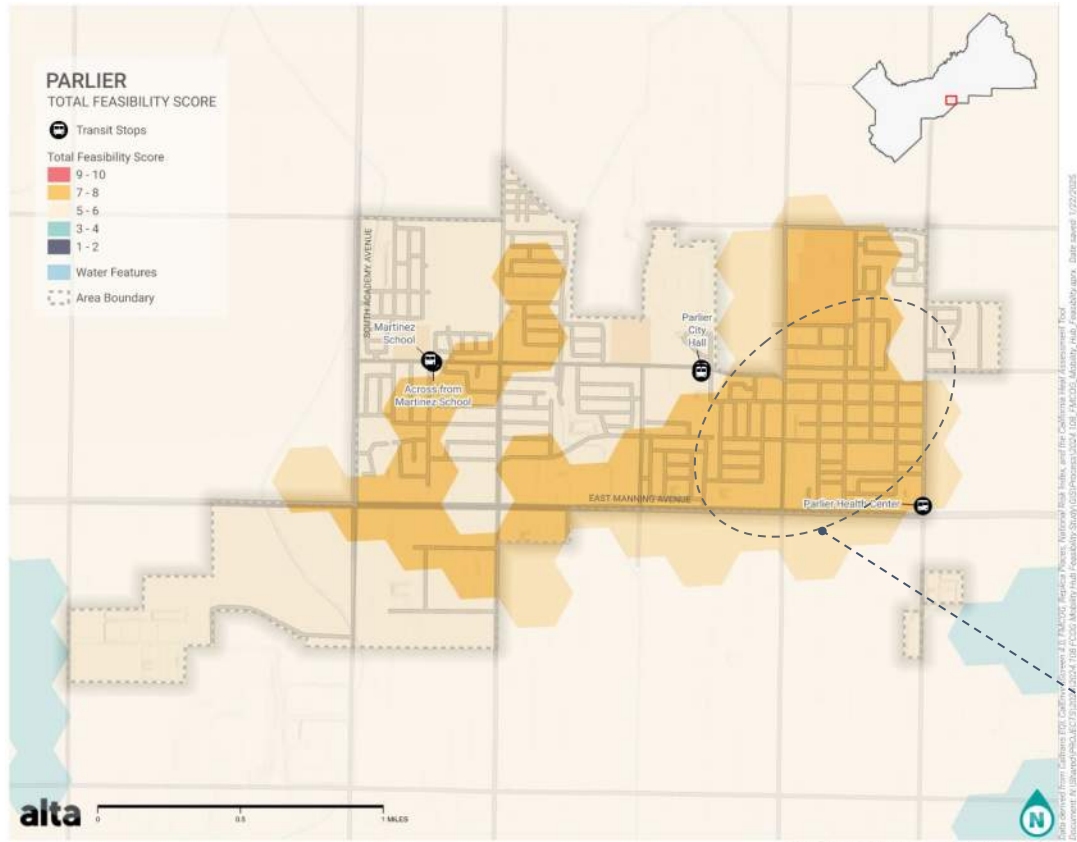
Map Analysis: Site Suitability Examples



Note: Some jurisdiction extents were adjusted to zoom into areas of interest, not all of the boundaries are represented in these maps.

Parlier (FCRTA)

Map Analysis: Site Suitability Examples

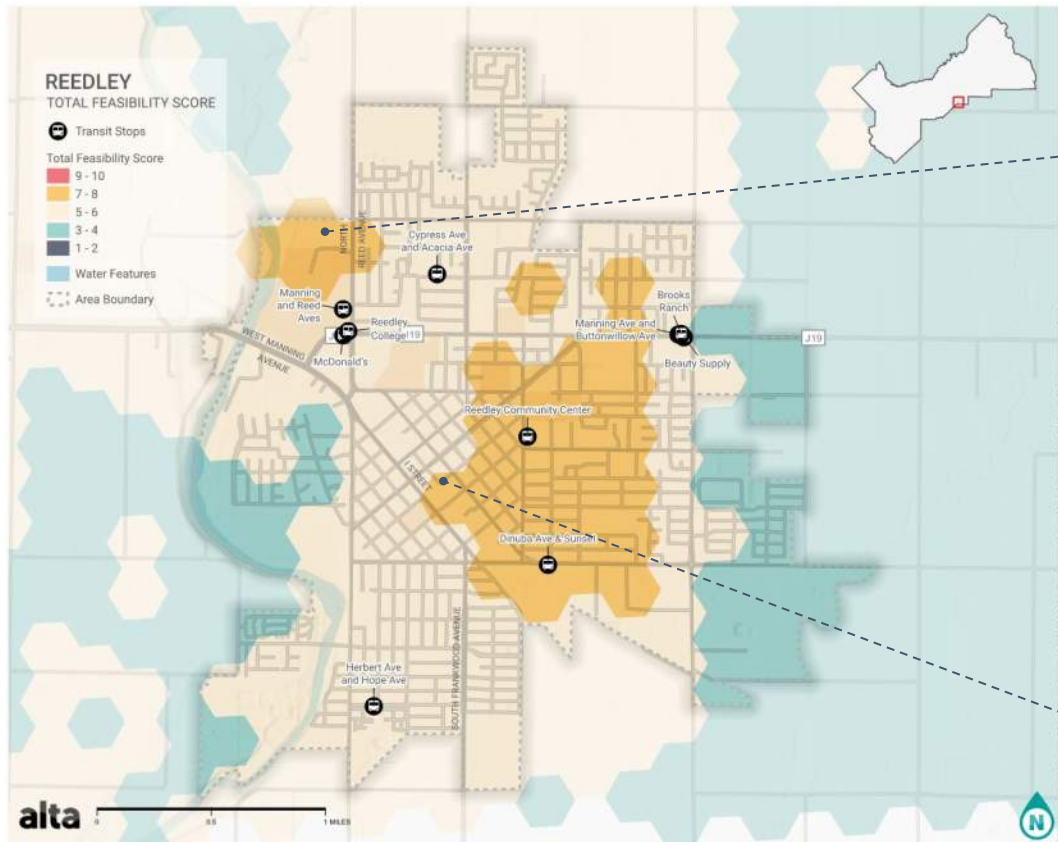


Residential, schools, etc

Note: Some jurisdiction extents were adjusted to zoom into areas of interest, not all of the boundaries are represented in these maps.

Reedley (FCRTA)

Map Analysis: Site Suitability Examples

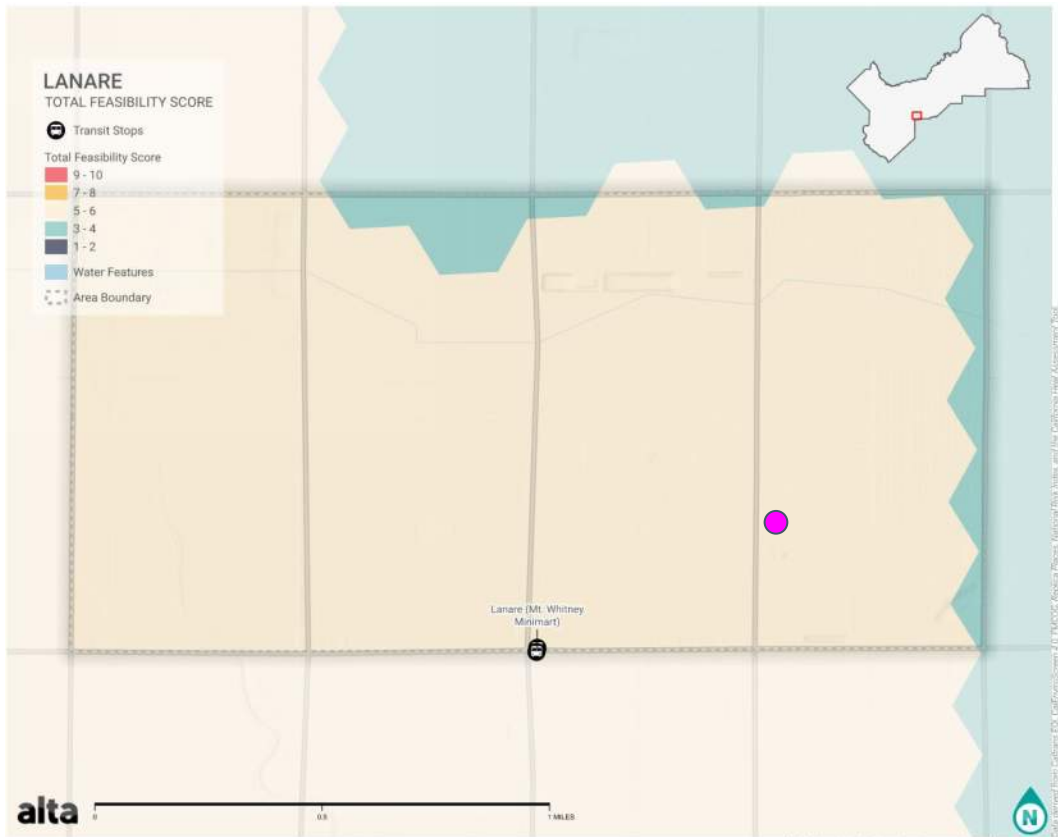


Reedley College

Downtown

Lanare Community Center (FCRTA)

Map Analysis: Site Suitability Examples

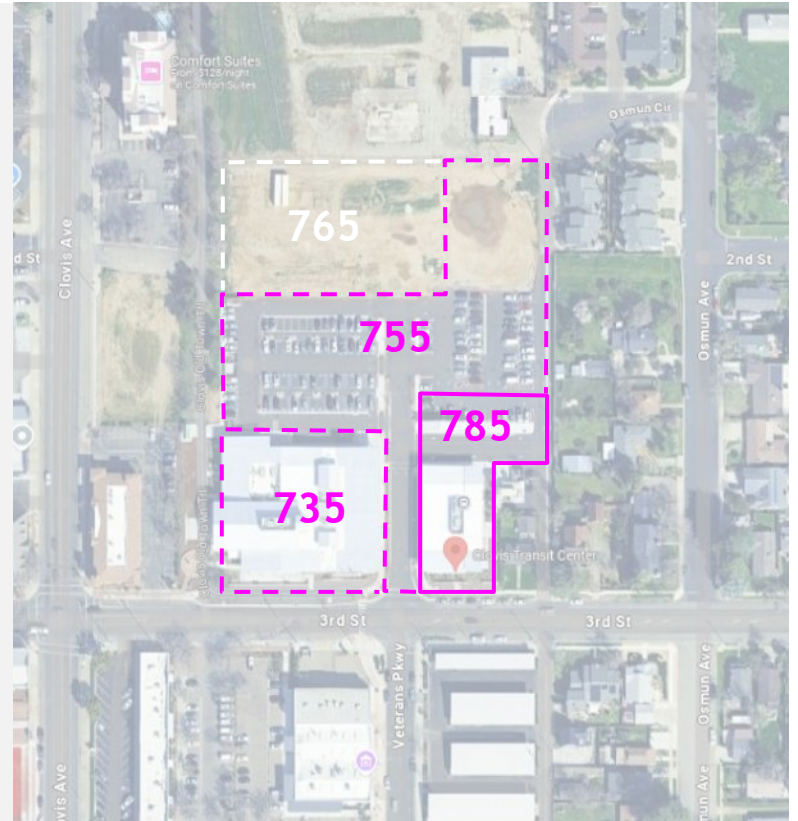


Note: Some jurisdiction extents were adjusted to zoom into areas of interest, not all of the boundaries are represented in these maps.

Sample Due Diligence

Landmark Transit Center: Site and Location Overview

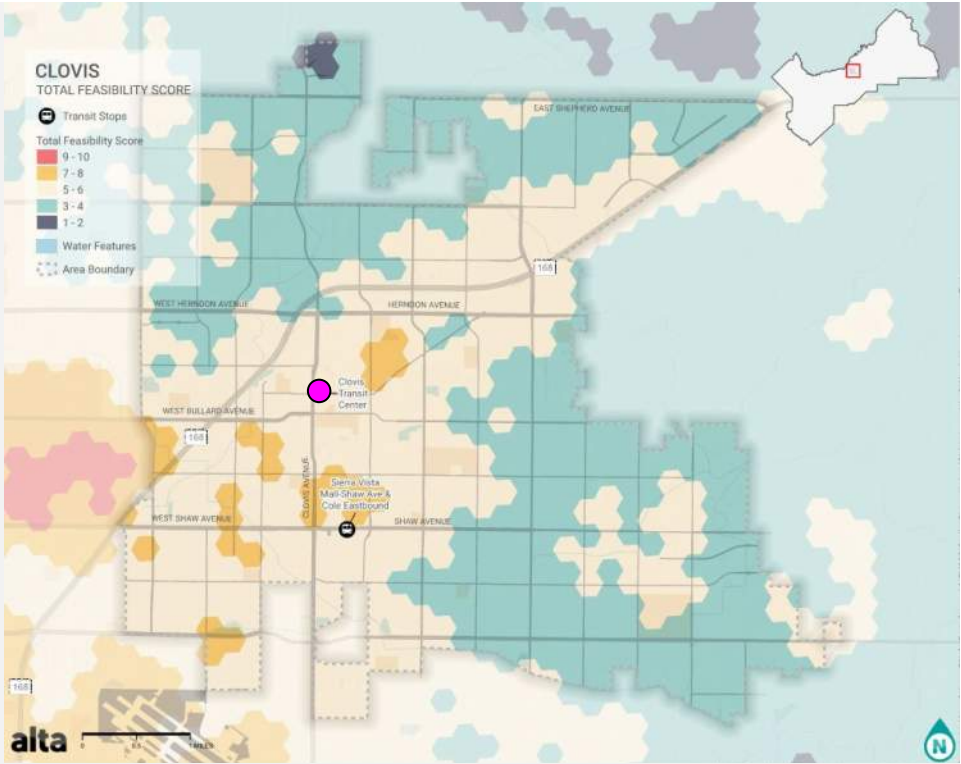
- **Address:** 785 3rd St, Clovis
- **Current use:** Transit Center - dispatch and administration center for Clovis Transit
- **Ownership:** City of Clovis
- **Zoning:** Mixed-Use M-U
- **Size:** ~35,000sf



Landmark Transit Center: Analytics Scoring

TOTAL	5.3	What leads to a higher score?
Transportation Equity	5.6	High transportation disadvantage
Environmental Burden	4.9	High burden
Activity Centers	7.4	More trip density
Future Land Use	3.5	More intense land use
Multimodal	9.1	Lower VMT
EV Gaps	5.6	Less access to EVCS
Hazards	2.4	Less risk
Heat Index	6.1	More future heat events

Scores out of 10



Landmark Transit Center: Site and Location Opportunities

- Site owned by City and already used for transit.
- **Central location**
 - Proximity to Old Town Clovis
 - Connection to City Trails
 - Bus stop connecting three future routes: Red, Yellow, Purple.
 - Next to the Senior Center
- Local permitting authority and transit agency are both the City of Clovis
- Site has already been **developed and improved**
 - Paving
 - Landscaping
 - Building
 - Bike shelters
 - Nearby EV charging station



Landmark Transit Center: Implementation Considerations

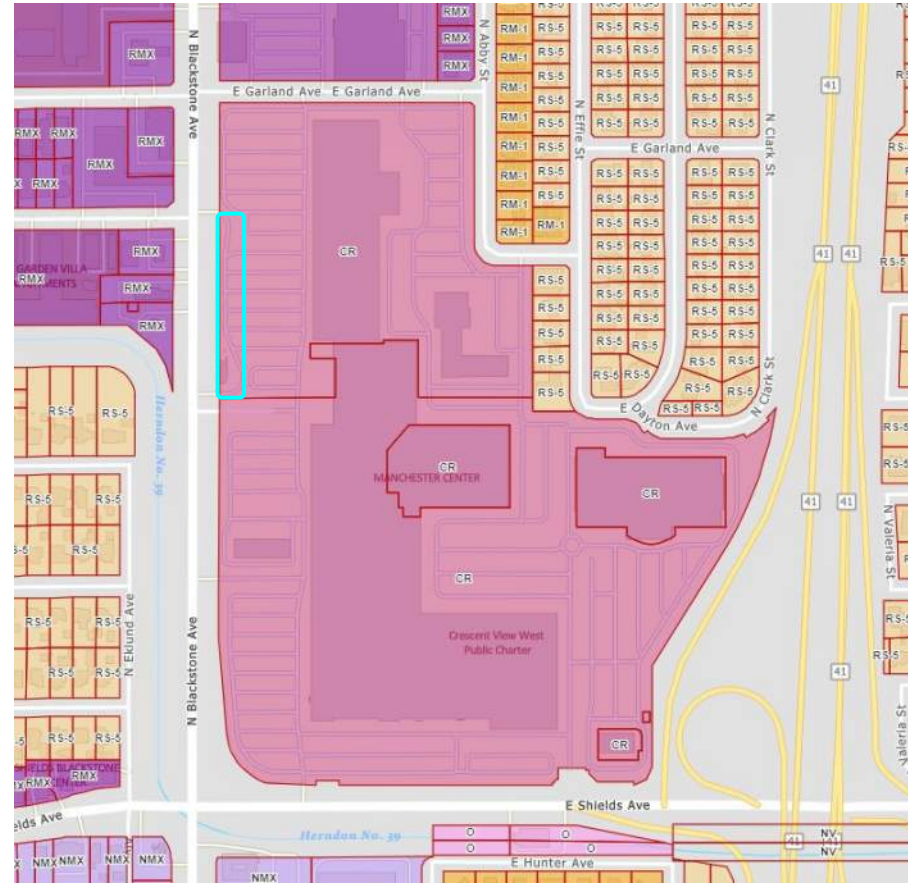
- **Permitting Considerations**
 - CEQA/NEPA
 - ADA requirements
 - Zoning and site design considerations
 - Electrical grid limitations
 - Coordination with PG&E
- **Site Considerations**
 - Parking lot fills from adjacent senior center
- **Questions to explore**
 - Are 735 and 755 City properties?
 - How is 755 parking allocated?
 - Is vacant 765 property available?
 - What hub services would be useful?



Source: Halajian Architects

Manchester Transit Center: Site and Location Overview

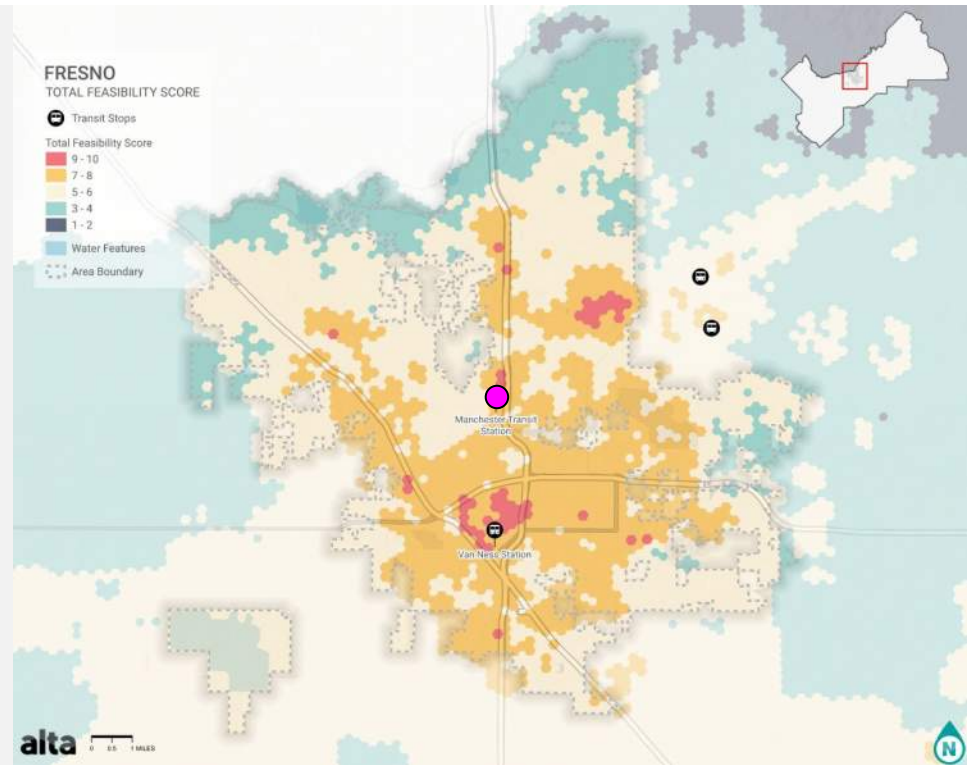
- **Address:** 3590 N Blackstone Ave (CR zoning)
- **Current use:** Transit Center and bus shelters along Blackstone Avenue
- **Ownership:** Ethan Conrad Properties (Sacramento-based)
- **Zoning:** Commercial Regional (CR)



Manchester Transit Center: Analytics Scoring

TOTAL	6.6	What leads to a higher score?
Transportation Equity	8.4	High transportation disadvantage
Environmental Burden	6.8	High burden
Activity Centers	8.2	More trip density
Future Land Use	4.8	More intense land use
Multimodal	9.3	Lower VMT
EV Gaps	9.7	Less access to EVCS
Hazards	1.1	Less risk
Heat Index	4.1	More future heat events

Scores out of 10



Manchester Transit Center: Implementation Opportunities

- Site already used for transit.
- Centrally located
 - Located next to large shopping mall
 - Q line BRT corridor
 - 28 and 41 buses
- Site has already been developed and improved
 - Paving
 - Building
 - Shopping Mall appears to have a significant amount of unused parking spaces



Manchester Transit Center: Implementation Considerations

- **Ownership**
 - Hub ownership structure
 - Hub operations and maintenance structure
- **Permitting**
 - CEQA/NEPA
 - ADA requirements
 - Zoning and site design considerations
 - Electrical grid limitations
 - Coordination with PG&E
- **Questions to explore**
 - What additional Hub services would be useful?
 - Parking allocation
 - Current ownership/lease arrangement



San Joaquin: Site and Location Overview

Note: This location has more known information due to being studied previously for a microgrid assessment.

- **Address:** 8745 S. Main St, San Joaquin
- **Current use:** none/vacant
- **Ownership:** City of San Joaquin
- **Zoning:** C-MS
- **Size:** ~7,500sf / 150x50ft



San Joaquin: Analytics Scoring

Note: This location has more known information due to being studied previously for a microgrid assessment.

TOTAL	5.5	What leads to a higher score?
Transportation Equity	8.1	High transportation disadvantage
Environmental Burden	7.2	High burden
Activity Centers	5.8	More trip density
Future Land Use	2.1	More intense land use
Multimodal	9.2	Lower VMT
EV Gaps	2.9	Less access to EVCS
Hazards	7.0	Less risk
Heat Index	7.1	More future heat events

Scores out of 10



San Joaquin: Site and Location Opportunities

Note: This location has more known information due to being studied previously for a microgrid assessment.

Direct Partnership - FCRTA + San Joaquin

- City owns the site
- City is a member of FCRTA's board
- FCRTA with Fresno EOC are implementing new microtransit service in San Joaquin and adjacent unincorporated communities
- City is owner and local permitting authority
- Potential for Golden Plains School District to use the hub (could be supporting partner)

Site has been vetted - Site analyzed and recommended in FCRTA Fresno County Microgrid & Multimodal Resiliency Hub Feasibility Study

Additional Information:

- FCRTA putting EV charger at City Hall
- City Hall potentially relocating to Main St.
- Large PV/BESS south of Cantua Creek



San Joaquin: Implementation Considerations

Note: This location has more known information due to being studied previously for a microgrid assessment.

- **Ownership**
 - Hub ownership structure
 - Hub operations and maintenance structure
- **Permitting**
 - CEQA/NEPA
 - ADA requirements
 - Zoning and site design considerations
 - Electrical grid limitations
 - Coordination with PG&E
- **Site Considerations**
 - Clay soils
 - Needs grading and paving
 - No existing utility services

