

FRESNO COUNTY MOBILITY HUBS FEASIBILITY STUDY

Fresno Council of Governments (Fresno COG)

Outreach Summary

April 20, 2026



WALKER
CONSULTANTS



ROUND ONE COMMUNITY OUTREACH

OVERVIEW

The Fresno Council of Governments (Fresno COG) and three transit agency partners, including Clovis Transit, Fresno Area Express (FAX), and Fresno County Rural Transit Agency (FCRTA), explored innovative ways to make it faster and easier to travel in the county. This project study aimed to identify sites in Fresno County for possible mobility hubs, providing community members with easy-to-use and efficient transportation modes that do not require the use of a personal vehicle. The project team sought feedback on potential locations for the four mobility hubs for their planning study, along with the types of amenities the community wanted to see at the hubs. Listed below is a summary of the updated outreach efforts for the project, survey results, and stakeholder interview information.

PROMOTION OF WORKSHOPS

- **Flyer:** A bilingual flyer was developed for the purpose of educating the community on mobility hubs. The flyer also provided access to the project website, where the feedback survey was available.
- **Eblasts:** A bilingual eblast was created to announce and encourage people to share their thoughts on a survey. The eblast included information to help promote the feedback survey and inform them of the project. The eblast also invited recipients to share the information with their respective communities. This information was shared with the Steering Committee and agency partners.
- **Social Media Calendar and Content:** The brand voice and messaging platform developed for this project were used to create social media copy and graphics to promote the feedback survey. A social media calendar was used to consistently promote the survey from November 2024 to January 2025. The content was developed for the existing Fresno COG Facebook page.
- **Project Website:** A project website was developed using Public Input. This website contained bilingual project overview information, contact information and a digital survey.
- **E-toolkit:** An e-tool kit was created to help community partners share information regarding the project and the feedback survey. The e-toolkit included bilingual social media posts and graphics, newsletter copy and flyers.



Pop-Up Events

Between September and October 2024, there were six multi-project pop-ups where staff could educate the public regarding the project and encourage their feedback. To raise awareness of the need for feedback, the project team created informational materials such as flyers to distribute and present to visitors at pop-up events, including:

- Central California Women's Conference, 9/17/2024
- Kerman Harvest Festival, 9/19/2024
- Kingsburg Crayfish Festival, 9/21/2024
- Clovisfest, 9/28/2024-9/29/2024
- Big Fresno Fair Seniors Day, 10/7/2024
- Reedley Fiesta, 10/11/2024-10/12/2024



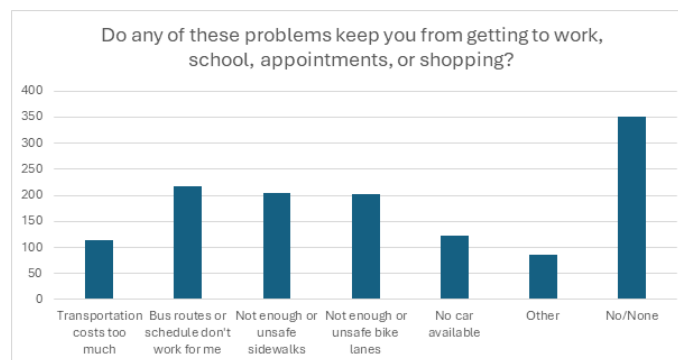
The pop-up events successfully attracted a diverse array of participants, offering them the opportunity to actively engage with the project team. Attendees varied from community members who wanted to learn more about the initiative to individuals who took the time to complete the survey. These events provided a venue for interaction, allowing participants to ask questions, share feedback, and contribute valuable insights that would shape the project's future.

Regional Transportation Plan (RTP) Survey

In August 2024, two questions were added to the existing RTP survey to initiate the feedback process for the mobility hub feasibility study. Below is a summary of the feedback results.

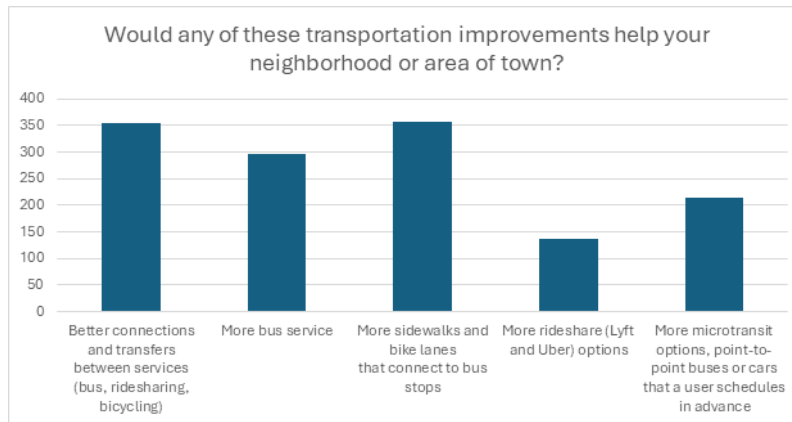
Do any of these problems keep you from getting to work, school, appointments, or shopping? (Check up to 3)

40.74% of participants indicated that none of the options were something that kept them from where they needed to go. Of those who expressed some issues, the options “Bus routes or schedule don't work for me,” “Not enough or unsafe sidewalks,” and “Not enough or unsafe bike lanes” were larger issues, receiving votes from 25.25%, 23.61%, and 23.50% of participants, respectively. “No car available” and “Transportation costs too much” received a more limited but notable 14.24% and 13.31% of the votes, respectively.



**Would any of these transportation improvements help your neighborhood or area of town?
(Choose up to 3)**

The options that received the largest number of votes were “More sidewalks and bike lanes that connect to bus stops” and “Better connections and transfers between services (bus, ridesharing, bicycling),” which received 41.20% and 40.97% of votes respectively. “More bus services” was also highly requested, with 34.38% of participants selecting it. Increased microtransit and increased rideshare options received fewer votes, getting support from 24.88% and 15.86% of participants respectively.



Survey

Overall, the Fresno County Mobility Hub Feasibility Study survey received 153 survey responses, with 211 comments from 116 commenters. Respondents across communities preferred locating mobility hubs near schools, including community colleges across the county and Fresno State as a regional educational hub. Further, regional amenities like Amtrak, healthcare facilities, libraries, and shopping centers were mentioned. This included nightlife attractions like the Brewery District and Tower District. One resident even cited “up and coming” places to reiterate keeping an eye on these types of destinations when choosing mobility hub sites.

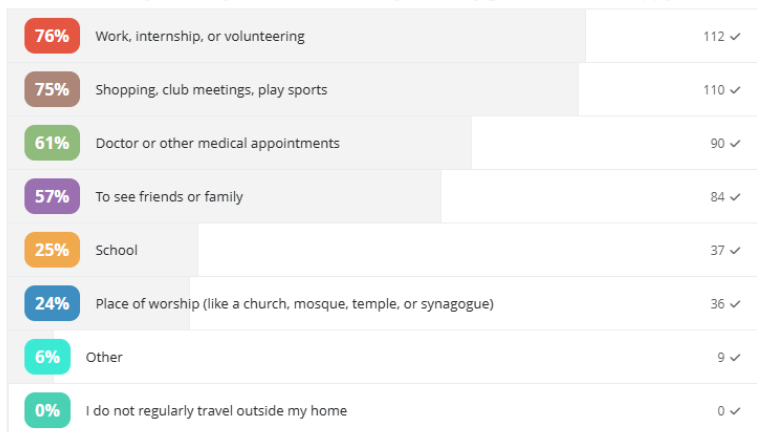
Several responses from outside Fresno County were also received for the survey. Their responses reinforced Fresno State's role as a regional educational hub and connectivity to regional retail sites.

Survey Questions

When you leave your home, where do you usually go? (Check all that apply)

The top three reasons to leave home were:

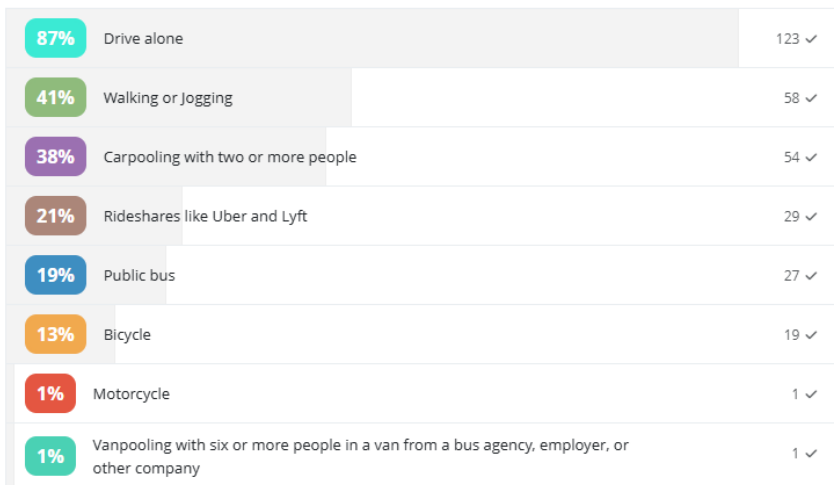
- Work, internship, or volunteering
- Shopping, club meetings, play sports
- Doctor or other medical appointments



Please select all the methods of travel you have used in the past 14 days to make any of the trips listed above. (Check all that apply)

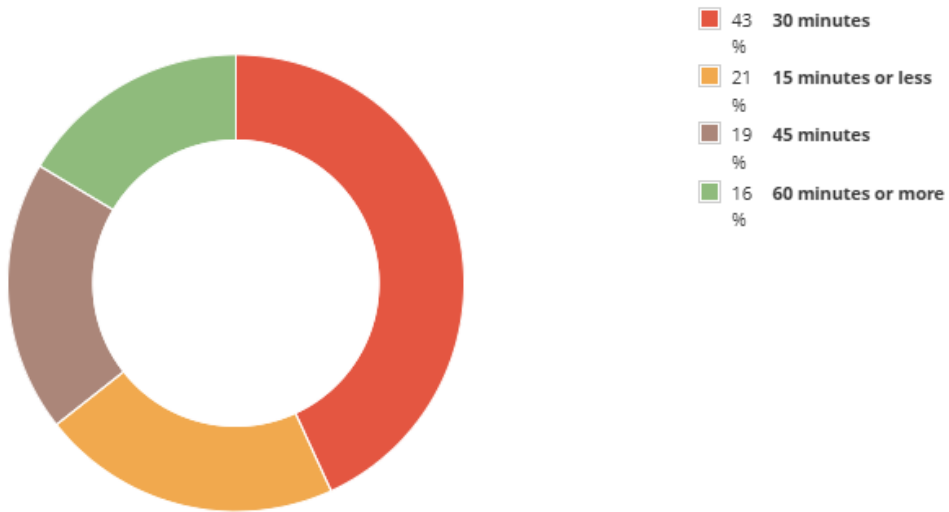
The top three methods of travel were:

- Drive alone
- Walking or jogging
- Carpooling with two or more people



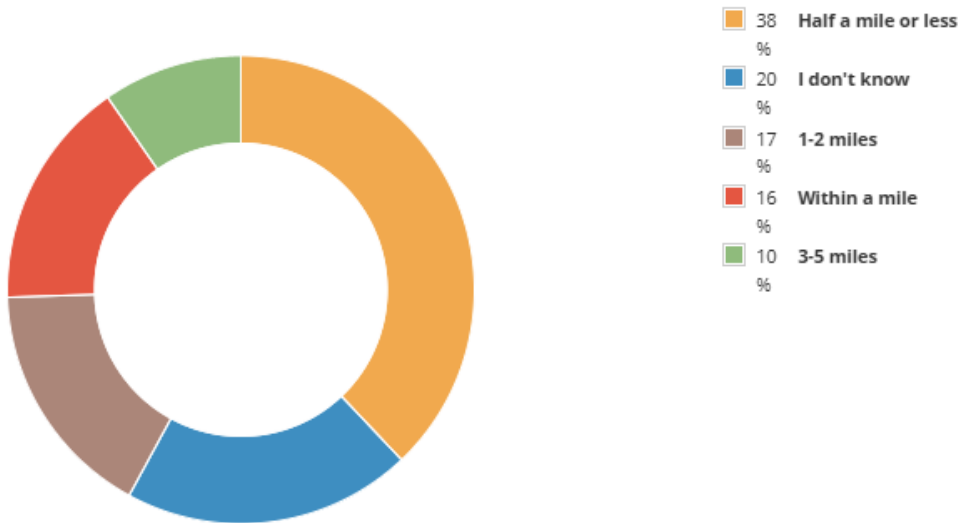
How long does it take you to travel to and from these places? (Roundtrip)

Forty-three percent (43%) of survey respondents travel a total of 30 minutes round trip to reach their destination.



How far is the nearest bus or transit stop from your home?

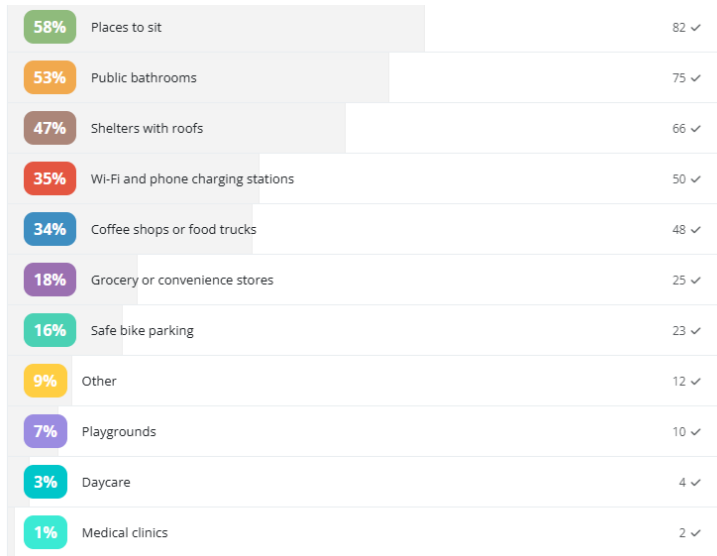
Thirty-eight percent (38%) of respondents indicated that there is a bus or transit stop located within half a mile of their residence.



What types of services or features would you like to see at a mobility hub? (select up to 3)

The top three types of services or features selected were:

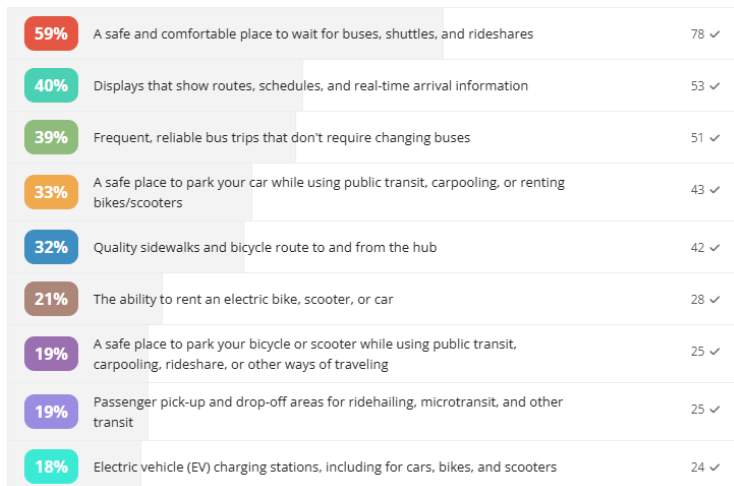
- Places to sit
- Public bathrooms
- Shelters with roofs



Which of these features would make you more likely to use a mobility hub? (select up to 3)

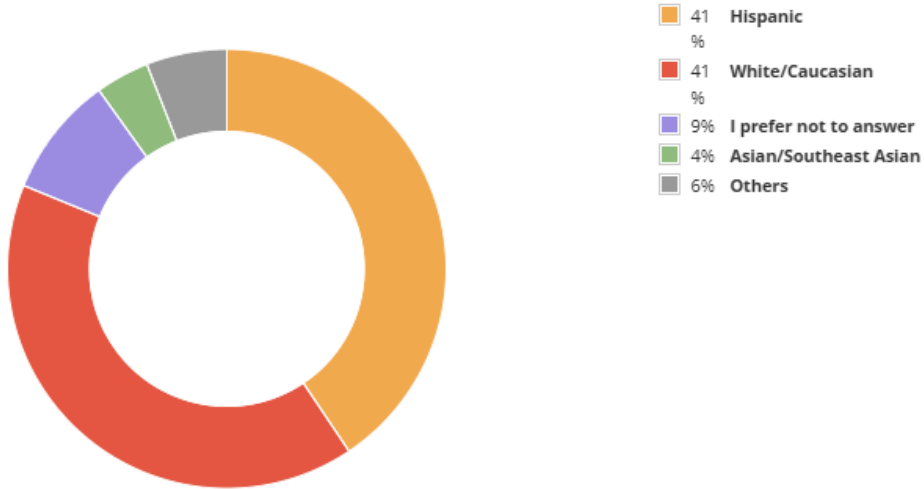
The top three types of features selected were:

- A safe and comfortable place to wait for buses, shuttles and rideshares
- Displays that show routes, schedules, and real-time arrival information
- Frequent, reliable bus trips that don't require changing buses



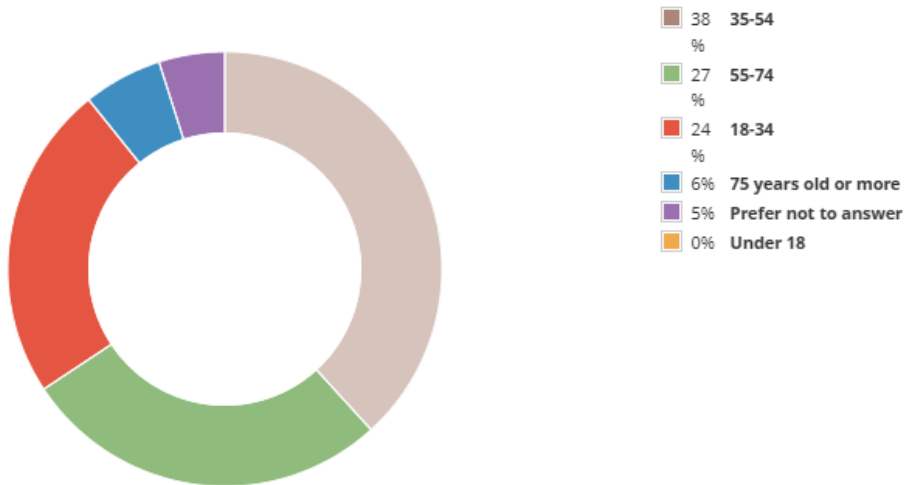
Which of the following most closely describes your ethnic background?

The survey results indicated that 82% of respondents identified as Hispanic or White/Caucasian, with 41% belonging to the Hispanic category and the remaining 41% to the White/Caucasian category.



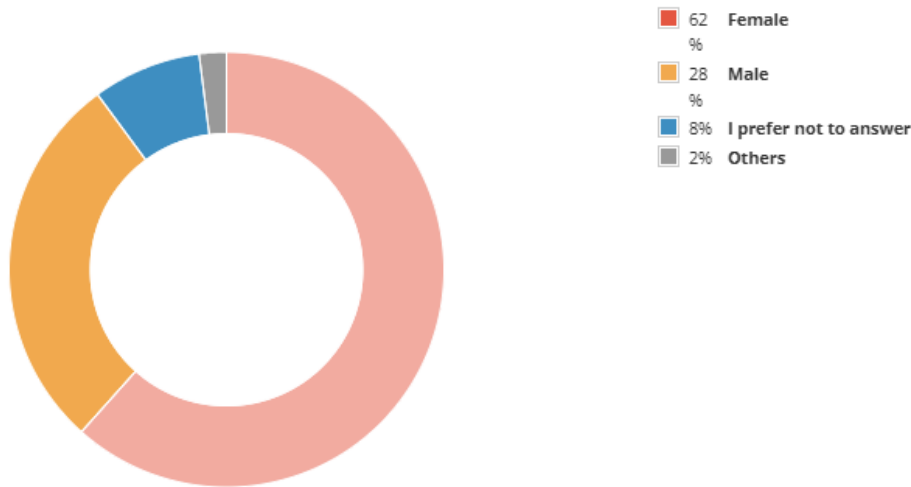
Which category best describes your current age?

The data indicates that 38% of the respondents fall within the 35-54 age demographic.



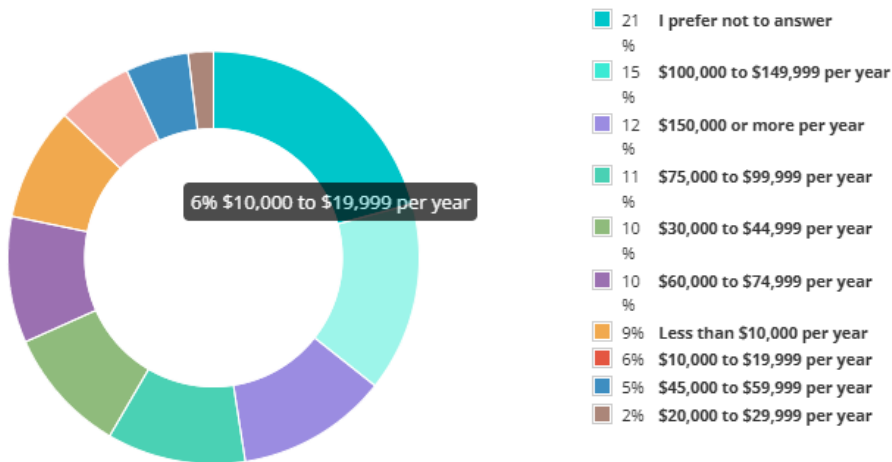
What is your gender?

62% of respondents identified as female, and 28% identified as male.



What is your combined household income?

The responses to this question were mixed. The largest group, comprising 21% of participants, preferred not to answer. Additionally, 15% of respondents reported an annual income of \$100,000 to \$149,999, while 12% indicated an income of \$150,000 or more.



Where do you think mobility hubs should be located in Fresno County? Please provide an address, cross-streets, or a nearby business name. You can suggest more than one location.

The following table provides an overview of the total number of responses received from residents of each city. This information further extrapolates where respondents from each city indicated they would like to see a mobility hub located, whether that was within their own community or within another community. Where specific locations are indicated, that information is provided, as well.

Note: Occurrence counts how often a respondent recommends a location. Upvotes show how many times respondents agree with another respondent’s recommendation.

The following is a list of recommended locations identified by Clovis residents. The two locations that received the highest number of votes were Fresno State and the College Campuses (General).

Clovis Residents (6 Commenters)		
Recommended Location	Occurrence	Upvotes
Fresno State	2	10
College Campuses (General)	1	10
Clovis Community Hospital	1	0
Clovis Community College	1	0
Sierra Vista (Shaw and Clovis)	1	0
Clovis Commons (Herndon and Willow)	1	0
Old Town Clovis	1	0
Downtown Fresno (Courthouse)	1	0
Downtown Fresno (Train Station)	1	0

The following is a list of recommended locations identified by Fresno residents. The three areas that received the highest number of votes were Downtown Fresno, Tower District, and College Campuses (General).

Fresno Residents (44 Commenters)		
Recommended Location	Occurrence	Upvotes
Downtown	10	10
Tower District	6	7
College Campuses (General)	5	3
Fresno State	4	0
River Park	4	0
Fresno Courthouse	3	4
Malls (General)	3	0
Hospitals (General)	3	0
180 and Fowler	2	1
City of Sanger	2	0
Millbrook and Cedar	2	0
Old Town Clovis	2	0
City of Kerman	2	0
Fig Garden Village	2	0
Cedar and McKinley	1	7
Chinatown	1	7
Jensen and Golden State	1	2
Maple and Church	1	0
City of Fowler	1	0

Palm and Shields	1	0
High School Campuses (General)	1	0
Shaw and Brawley	1	0
Fashion Fair	1	0
Veterans Hospital	1	0
Manchester Center	1	0
Chestnut and Cesar Chavez	1	0
Willow and Shepherd	1	0
Rolinda	1	0
Herndon and 99	1	0
Fresno City College	1	0
Shaw and Grantland	1	0
Herndon and Cedar	1	0
Herndon and Willow	1	0
Pottle and Mono	1	0
Shaw and Minnewawa	1	0
Sierra Vista	1	0
Sunnyside	1	0
Libraries (General)	1	0

The following is a list of recommended locations identified by Kerman residents. The two areas identified were the City of Kerman and the City of Mendota.

Kerman Residents (2 Commenters)		
Recommended Location	Occurrence	Upvotes
City of Kerman	1	1
City of Mendota	1	0

The following is a list of recommended locations identified by Kingsburg residents. The top three areas identified were the City of Reedley, River Park (Fresno) and Fashion Fair Mall (Fresno).

Kingsburg Residents (5 Commenters)		
Recommended Location	Occurrence	Upvotes
City of Reedley	2	2
River Park	2	0
Fashion Fair	2	0
City of Kingsburg	1	2
Fresno Courthouse	1	0
Fresno State	1	0
City of Clovis	1	0

The following is a list of recommended locations identified by Reedley residents. The two areas of interest were Reedley College and the City of Fowler.

Reedley Residents (3 Commenters)		
Recommended Location	Occurrence	Upvotes
Reedley College	2	6
City of Fowler	1	0

The following is a list of recommended locations identified by Sanger residents. The two areas of interest were Shafer Park and Sierra Vista.

Sanger Residents (1 Commenter)		
Recommended Location	Occurrence	Upvotes
Shafer Park	1	0
Sierra Vista	1	0

The following is a list of recommended locations identified by Selma residents. The two areas identified were the City of Kingsburg and the City of Selma.

Selma Residents (6 Commenters)		
Recommended Location	Occurrence	Upvotes
City of Kingsburg	2	4
City of Selma	2	0
City of Reedley	1	1
City of Dinuba	1	1
City of Orange Cove	1	1
City of Orosi	1	1
Reedley College	1	0
Frankwood and Manning (Reedley)	1	0
Fresno Courthouse	1	0
Fresno State	1	0

The following list contains the recommended locations identified by residents of outside counties. The three areas of interest are River Park (Fresno), the City of Kingsburg, and the City of Reedley.

Outside Counties (20 Commenters)		
Recommended Location	Occurrence	Upvotes
River Park	3	2
City of Kingsburg	3	0
City of Reedley	3	0
City of Clovis	2	3
Fresno State	2	1
City of Kerman	2	1
Sunnyside	2	0
Fashion Fair	2	0
Downtown Fresno	2	0
Fresno Airport	2	0

Fig Garden Village	1	1
Herndon and Cedar	1	1
Herndon and 99	1	1
Woodward Park	1	1
Fresno Courthouse	1	1
Sierra Vista	1	0
Tulare and First	1	0
Shaver Lake	1	0
City of Sanger	1	0
Van Ness and Nevada	1	0
Blackstone and Ashlan	1	0
Cedar and Shields	1	0
City of Coalinga	1	0
Manchester Mall	1	0
Fresno City College	1	0
Clovis Community College	1	0
City of Fowler	1	0
City of Parlier	1	0
Brewery District	1	0
Tower District	1	0
Old Town Clovis	1	0

Submit mobility hub comments or presentation requests to staff. (This section was an open-ended question that allowed survey takers to submit feedback. Please note that the text has not been edited or corrected.)

I'd like to see more help for transportation and child care in kingsburg ca
Fresno is too spread out and doesn't foster public transportation or bike/scooter riding. Fresno county residents prefer to drive everywhere because of the location of businesses are not in the same area. In addition, the safety in certain parts of Fresno is iffy. Fresno needs to fix the unhoused population before implementing a HUB in order for people to feel encouraged to use.
Kerman, California, is a growing city that serves as a transit point for many, particularly students commuting to Fresno State and Fresno City College. Establishing a transportation hub in Kerman would greatly benefit Fresno County and its neighboring counties, especially the underrepresented communities around Kerman. This initiative is not only vital for Kerman but also for the surrounding cities.
Good stuff
Nice idea to collect our thoughts
Great idea! Keep up the good work!

I think this is a great idea for a means of transportation for those in rural towns/city’s throughout Fresno County. Often times people’s means of transportation are limited in rural communities; resulting in poorer health outcomes because of lack of transportation between rural communities/city’s/towns.
No mobility hubs until homeless are cleared off the streets, streets are repaired and there is security at these places.
Show more information about them, and how is their use or service to our comuniques
Having the freedom to remain independent and not have to rely on our children would be wonderful.
We moved here from Morgan Hill-Gilroy where there was a good bus system to get around. We knew we could remain independent. We don't know that now. We would like to be able to rely on ourselves, not have to ask our kids to take us to appointments. Just having the freedom to shop or go to Roger Rocka's would be great.
Hurón
Make this survey easier to find on your social media, could not copy and paste on my phone had to Google

Round 1 Stakeholder Interviews

The project team has conducted numerous stakeholder interviews. Through these interviews, the team learned about general mobility barriers and opportunities in Fresno County and discussed specific sites and locations that might be appropriate for mobility hubs. These interviews occurred online or in person. Interviews have been conducted with the following groups or people:

Location	Date
City of San Joaquin	September 24, 2024
City of Clovis and additional staff	September 24, 2024
Reedley College	September 25, 2024
City of Fresno and additional staff	September 25, 2024
Fresno Housing	December 19, 2024
City of Fresno Long-Range Planning	December 23, 2024
Self-Help Enterprises	January 3, 2025
Fresno County Economic Development	January 7, 2025
Fresno Metro Black Chamber of Commerce	January 13, 2025
State Center Community College District	January 15, 2025
Cecil C. Hinton Center	February 13, 2025
Regenerate California, Rural Communities Rising	February 19, 2025

USGBC Central California	February 20, 2025
City of Fowler	March 4, 2025

Notes from these interviews, all of which occurred during site visits, are located in the *Mobility Hubs Feasibility Study Existing Conditions Report*, dated March 19, 2025.

ROUND TWO COMMUNITY OUTREACH

Workshops

During July, the staff organized four community workshops to invite key focus groups and the public to learn about and give feedback on the proposed mobility hub locations and possible amenities. Display boards illustrated project details, and one to two central maps allowed attendees to collaborate and create their ideal mobility hub. Focus groups were invited to an early session of the workshops before opening to the public. Each workshop location was selected with the help of the designated transit agency to ensure a location close the suggested mobility hub locations.



Collateral Material Developed

- **Flyer:** A bilingual flyer was created for each transit agency to promote the workshop in their respective regions. The flyer included important information about the workshop, such as its location and scheduled time, along with a brief description of the project.
- **E-blasts:** A bilingual e-blast was developed for each transit agency to promote the workshop in their areas. These e-blasts were sent via email and shared with their respective communities.
- **Social Media:** A social media calendar and content plan were created for each transit agency to promote the workshops in their regions. Each agency received a set of social media posts that were then published on their designated channels. Content was tailored for the Facebook pages of Fresno COG, Clovis Transit, FAX, City of San Joaquin and the City of Parlier.
- **Project Website:** The project website was updated to feature all four workshops, enhancing event promotion and disseminating information about the project. The website included bilingual project overview information, contact details, and a digital survey.

- E-toolkit: In response to specific requests from each transit agency, additional materials were carefully developed. Notably, San Joaquin requested a press release to be distributed to their local newspaper for broader circulation.

Workshops Facilitation

The primary focus of the workshops was on feasibility. Key questions addressed included: Would this mobility service be beneficial? Is there a practical pathway to establishing a hub like this? The workshops were conducted in prime locations, in coordination with the transit agency. The first part of each workshop featured a presentation for key stakeholders, providing an overview of the project. The final segment was a community workshop, allowing members of the public to participate, provide feedback, and ask questions.

The following display boards and maps were developed for the purpose of showcasing the following information:

- The project background
- A guide to mobility services and amenities to consider at hubs
- A context map of the area around the study location
- Two draft concepts (a high-impact and a low-impact option) for discussion and modification

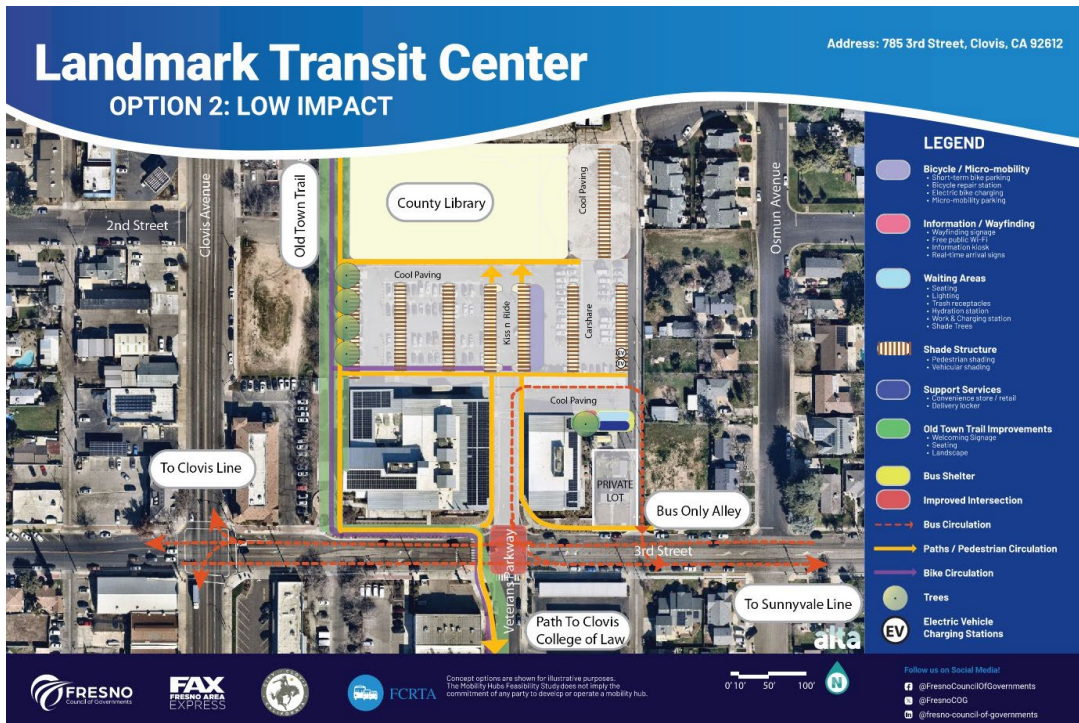
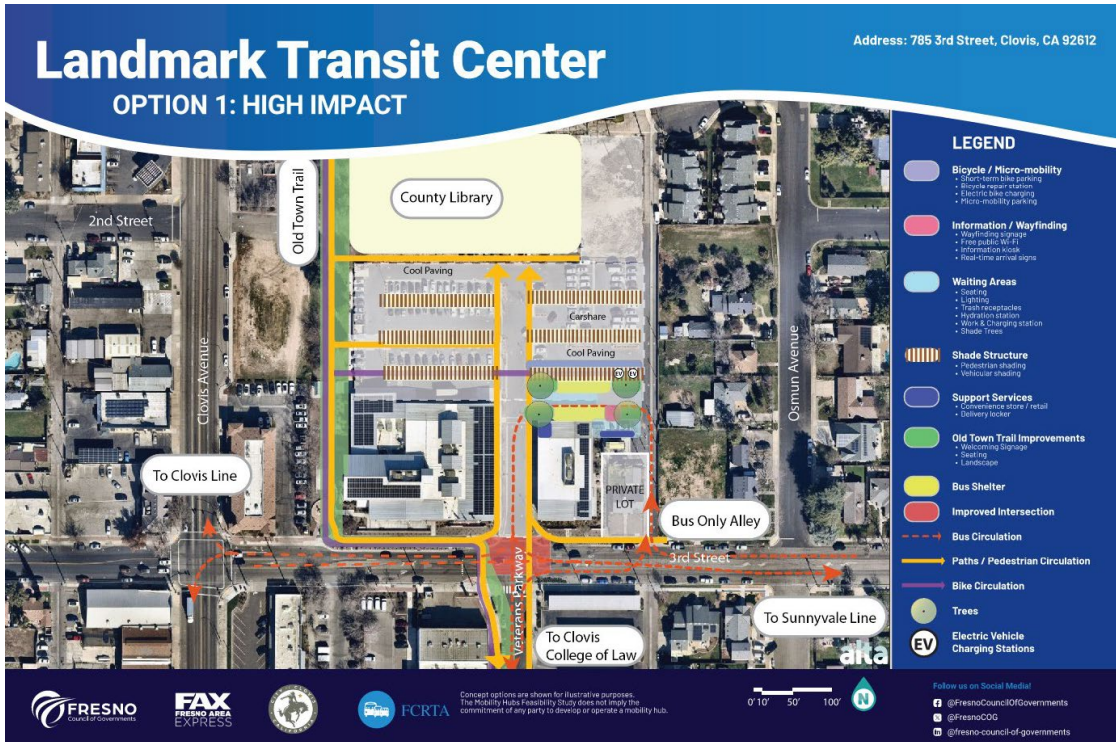
Clovis Workshop

On July 14, 2025, the Clovis Workshop took place at the Clovis Transit Center located at 785 3rd St, Clovis, CA 93612. The event was attended by eight individuals: Stephen Frankian, Nick Chin, Susana Herrera, Cherylyn Crill-Hornsby, Lorena Mendibles, Catalina Vega, Moses Stiles, and Bethany Berube.

The results from the Clovis Table Session highlight various station stop amenities designed to enhance the user experience. Key features include solar canopies and walkways, alongside improvements at the library. There are also street crossing enhancements to facilitate safer pedestrian access. Wayfinding elements have been proposed to direct users to trails, sidewalks, and the Hub, complemented by information boards for better navigation. Additional considerations include exploring options for EV charging and providing bike storage facilities.



Clovis Landmark Transit Center Maps



Clovis Table Session Feedback: Table 1 and 2



Parlier Workshop

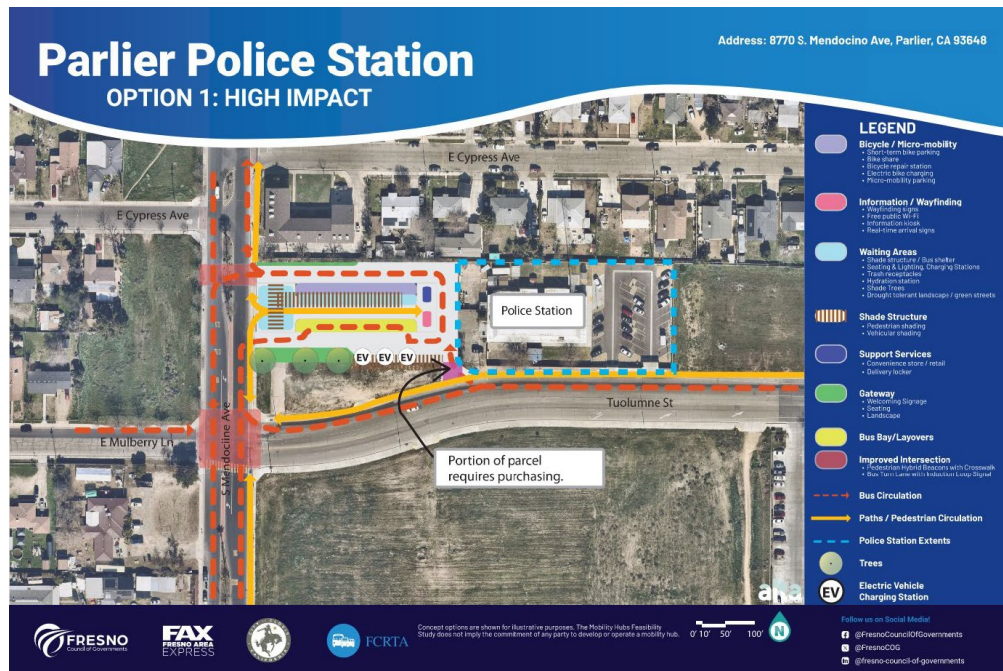


On July 15, 2025, a community workshop took place at Parlier City Hall, located at 1100 E. Parlier Avenue in Parlier. The event was attended by four participants: Graciela Aguilar, Christopher Xong, Eva Beltran, and Alma Beltran.

During the Parlier community workshop, key feedback emerged regarding street enhancements. Participants emphasized the importance of connecting to the planned

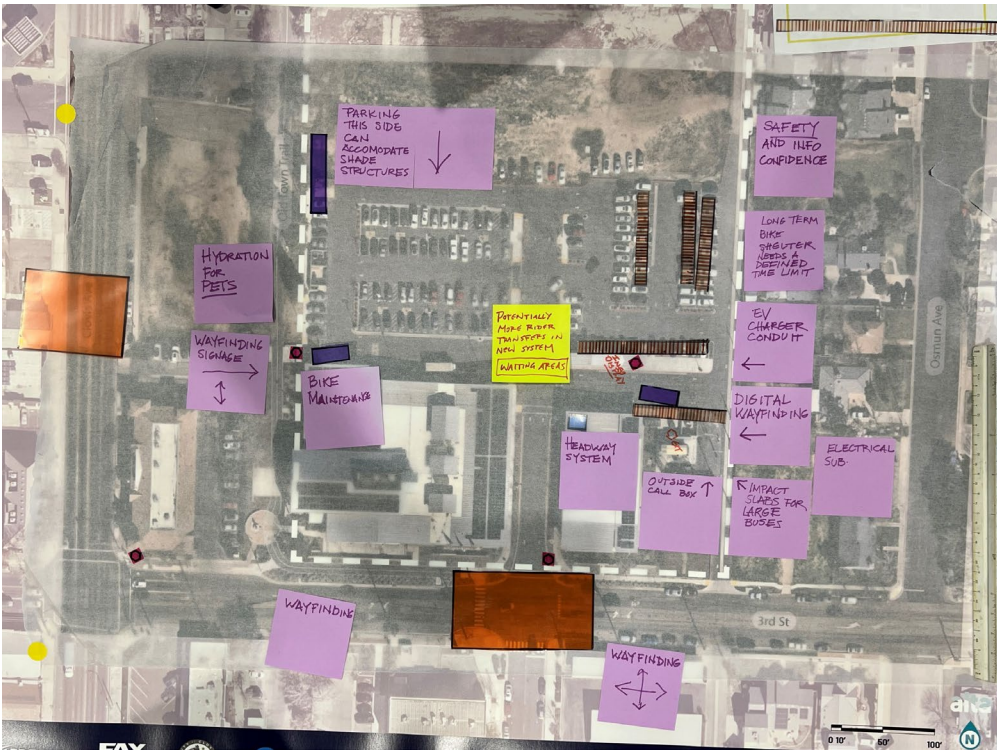
"Limitless Lane" and suggested considering FCRTA bus routing in the area. Additionally, there was a call to ensure that amenities align.

Parlier Police Station Map





Parlier Table Session Feedback



Fresno Workshop

The Fresno Workshop was held on July 15, 2025, at the Farber Education Center located at 720 S. 10th Street in Fresno. The workshop welcomed 15 attendees, including Drew Wilson, David Vazquez, Song Vang-Sung, Andreina Aguilar, McNight Thao, Christopher Xong, Christine Bowler-Dominguez, Jeff Long, Sukhwinder Cheema, Kay Bertken, Brittany Carpenter, Sarah Valentine, Eric Spikes, Leefong Mouavangsou, Casey Landerdale, and Daniel Brannick.

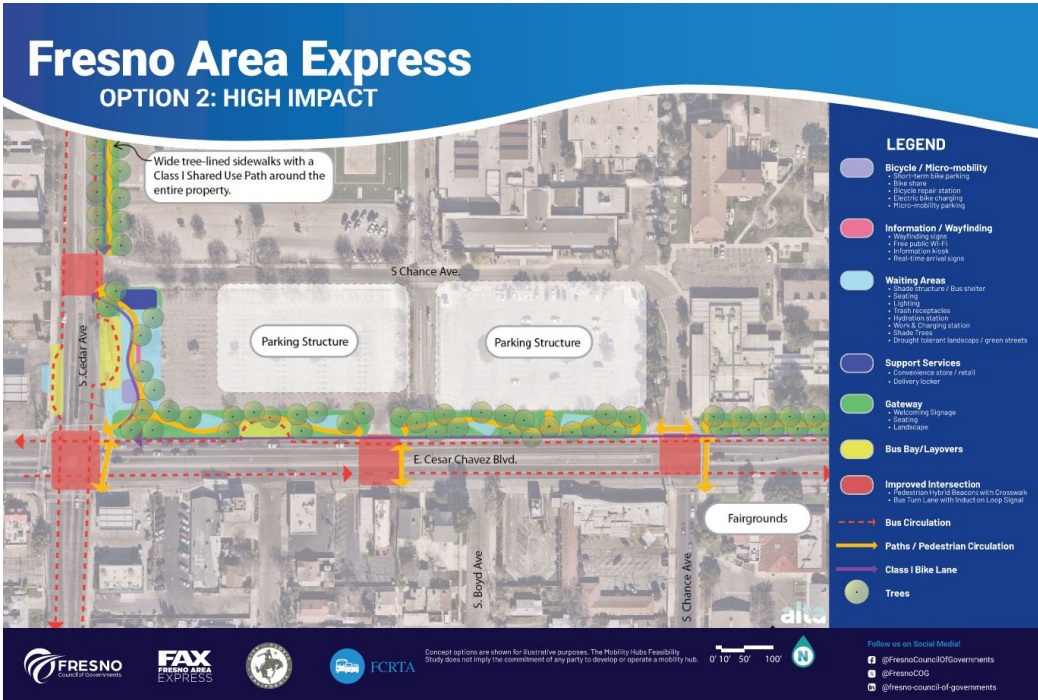


The key findings from the Fresno table session highlight several important elements for the site. Firstly, shade trees serve as a visual highlight, enhancing the aesthetic appeal. Additionally, a plaza and amenity space have been proposed for the southwest corner, along with necessary street crossing improvements to enhance safety. The inclusion of in-lane bus stops is also recommended, alongside the addition of landscape edges. Furthermore, having

amenities and businesses lining the site, as well as improvements to the sidewalks, is essential for creating a vibrant and accessible environment.

Fresno Area Express Maps





Fresno Table Session Feedback: Table 1 and 2





San Joaquin Workshop

On July 16, 2025, a community workshop was held at the San Joaquin City Council Chambers, located at 21991 W. Colorado Avenue in San Joaquin. The event was attended by 12 individuals, including Noe Martinez, Sarah Marshall, Victor Martinez, Felipe Piedra, Adam Cornejo, Cristina Covarrubias, Fred Henson, Lataria Hall, Robert Pimentel, Mare Benjamin, Luis Martinez, and Elva Rodriguez.

The San Joaquin table session highlighted several key features, including the enhancement of the Main Street streetscape to improve connectivity to nearby services such as the library. A central plaza and gathering area were also emphasized, along with thoughtful site landscaping. Additionally, plans include the installation of EV charging stations off the alley, the establishment of an FCRTA microtransit hub, and the introduction of to-be-determined fixed route buses to further support community transit needs.



San Joaquin Main Street Map



San Joaquin Table Session Feedback



Steering Committee Meetings

Dates	Summaries
8/14/24	The project team presented an overview of the Study and had each Committee members and project team staff member introduce themselves and their roles. Most of the meeting was spent having the Committee members brainstorm input on several key introductory topics, including opportunities and challenges for implementing hubs, identifying communities in need of transportation solutions, listing potential hub locations, and naming partners who could be involved in hub planning and development.
11/14/24	The project team reviewed several upcoming tasks, including public outreach, ongoing existing conditions analysis, and the geographic site selection process. The Committee helped determine which data factors should be included in the site selection special analysis.
2/25/25	<p>In early 2025, the project team reviewed the outcomes of the spatial analysis for site selection. Each transit agency team worked with the consultants to review the map suitability scores and brainstormed more specific locations based on the scoring and the team’s collective professional judgment about idea locations and potential implementation partners.</p> <p>This process results in four locations for Clovis Transit, 19 locations for FAX, and six locations for FCRTA. In this meeting, the Steering Committee reviewed each location and helped the team identify a shorter list of sites for deeper evaluation, resulting in two Clovis Transit, seven FAX, and six FCRTA locations.</p>
4/29/25	<p>During this meeting, the Committee reviewed the final selections made by Clovis Transit for the Landmark Square location and by FCRTA for the San Joaquin Main Street and Parlier Police Station sites. FAX had not yet selected its site, so it reviewed four final shortlist locations with the Committee, who provided valuable guidance to help FAX narrow its selection and useful insights into the opportunities for a hub at the three other selected locations. (FAX selected the Cesar Chavez/Cedar site near the former University Medical Center as their location in mid-May 2025.)</p>
Workshops 7/14/25-7/16/25	Numerous Committee members attended one or more of the four on-site design workshops to review and revise concepts for the four hubs: Clovis Landmark Square, the Cesar Chavez/Cedar site in Fresno, Parlier Police Station, and Main Street San Joaquin.
11/6/25	Final review of the design concepts and feasibility factors, and preliminary discussion of potential action next steps for project partners.

Round 2 Stakeholder Interviews

Stakeholders	Date	Stakeholders	Date
City of San Joaquin	September 24, 2024	Cecil C. Hinton Center	February 13, 2025
City of Clovis and additional staff	September 24, 2024	Regenerate California, Rural Communities Rising	February 19, 2025
Reedley College	September 25, 2024	USGBC Central California	February 20, 2025
City of Fresno and additional staff	September 25, 2024	City of Fowler	March 4, 2025
Fresno Housing	December 19, 2024	Fresno County Libraries	March 25, 2025
City of Fresno Long-Range Planning	December 23, 2024	Fresno State Parking and Transportation Services	April 2, 2025
Self-Help Enterprises	January 3, 2025	Caltrans District 6 Park & Ride Division	April 2, 2025
Fresno County Economic Development	January 7, 2025	City of Clovis, Facilities Maintenance	April 11, 2025
Fresno Metro Black Chamber of Commerce	January 13, 2025	Fresno Metro Black Chamber of Commerce	July 16 and October 14, 2025
State Center Community College District	January 15, 2025		

Public Review of Draft Plan

The draft plan for the Mobility Hubs Feasibility Study was open for public review from February 2 to February 20, 2026. This outreach effort aimed to gather community input to ensure that the draft plan accurately reflected local mobility needs and priorities. Community members were invited to participate in several ways. The draft plan was available on Fresno COG’s Mobility Hubs project website for public comment, and feedback could be submitted via email or voicemail. Additionally, two virtual meetings were held on Wednesday, February 18, to facilitate live discussions: the morning session ran from 12 to 1 p.m., and the evening session was from 5 to 6 p.m. The draft plan was posted on the public project website, and the public meetings were promoted through email blasts and social media posts. These public meetings were attended by Patricia Hickey with Tranquillity Resource Conservation District, Song Vang-Sung with the City of Fresno and, Clara Corl and Carolina Ilic with VRPA Technologies.

Participant	Feedback/Comment
<p>Patricia Hickey – Tranquillity Resource Conservation District:</p>	<ul style="list-style-type: none"> • Praised the plan as a valuable learning tool and beautifully written. • Currently exploring mobility transportation issues and inquired about additional recommended reading. • Asked how the San Joaquin site would improve mobility for rural/agricultural areas like Tranquillity and Mendota; response noted that surrounding areas could model their own hubs from this example. • Cited a Rural Communities Rising survey indicating a lack of safe, family-friendly places such as parks.
<p>Clara Corl – VRPA Technologies:</p>	<ul style="list-style-type: none"> • Student participating to learn more about the plan; was provided an overview of the mobility hubs feasibility study and corresponding outreach. • Asked whether ATP aligns with the project; response clarified that ATP does not, but the RTP does (reference to Chapter 4).
<p>Carolina Ilic – VRPA Technologies:</p>	<ul style="list-style-type: none"> • Expressed enthusiasm about selected hub locations (e.g., police stations). • Asked about envisioned design concepts and the renderings style.