

Fresno COG Extreme Heat Analysis

Working Meeting 1

PRESENTATION BY ROSE NEWBERRY

MARCH 2025

Fresno COG Extreme Heat and Shade Plan

- | | | | |
|-----------|-------------------------------|-----------|---------------------------------------|
| 01 | Introductions | 05 | Community Engagement
Plan Overview |
| 02 | Working Group
Expectations | 06 | Plan Review |
| 03 | CalTrans Grant | 07 | Vulnerability Indicators |
| 04 | Work Plan | 08 | Needs of Locals |

Introductions

Project Team

FCOG

Project
Managers

Consulting
Team:

Dudek
and VRPA

Working
Group
Members

Working Group

Objectives



Plan
Review

Meetings

Analysis

Meetings



Meeting #1

**Introduction and
overview, vulnerability
indicators
and local needs**



Meeting #2

Analysis and
engagement review,
input on cover projects



Meeting #3

Draft plan comments
and implementation training

Lines of Communication and Logistics

- **Rose Newberry - Dudek**
rnewberry@dudek.com
- **Matthew Shimizu - FCOG**
mshimizu@fresnocog.org
- **Carolina Ilic - VRPA**
cilic@vrpatechnologies.com

Caltrans : Climate Adaptation Planning Grant

Project Description

- The Fresno Council of Governments will develop an **Extreme Heat Analysis and Shade Adaptation Plan** for Fresno County. The plan will include an **extreme heat vulnerability analysis**, which will provide valuable data for future adaptation and mitigation responses to extreme heat induced by climate change. The plan will also **identify native and drought tolerant tree canopy and vegetative cover improvement projects** in communities most vulnerable to extreme heat based on the extreme heat vulnerability analysis and bike and pedestrian traffic analysis.
- This plan will inform general plans, other long-range plans, and the design and retrofit of future and present infrastructure.

Workplan

Project Objectives

1. Identify Transportation Infrastructure Vulnerabilities
2. Foster Collaboration and Partnerships
3. Multistakeholder process and engagement
4. Develop Adaptation Strategies
5. Identify Co-benefits
6. Include Cost analysis
7. Benefit Under resources communities
8. Consistency with State Priorities

Work Plan Overview



Public Engagement Plan

Public Engagement Plan

Proposed Public Engagement Activities

- Extreme Heat Working Group Meetings
- Presentations to FCOG Standing Committees
- Social Media, Flyers, Constant Contact Email Distribution
- Pop-Up Events
- Virtual Workshops
- Outreach Memo

Public Engagement Schedule

EVENT	DATES
Working Group Mtg #1	May 14th, 2025
Pop-Up Events	May 27th and 28th and June 2nd, 6th, and 15th
Virtual Workshop #1	June 17th, 2025 (10am)
Virtual Workshops #2 + #3	March 2026
Working Group Mtg #2	March 19th, 2026
Working Group Mtg #3	May 20th, 2026
Social Media Posts, Emails, and QR Codes	Ongoing
Engagement Memo	July 2026
Presentation to FCOG Committee	September 2026

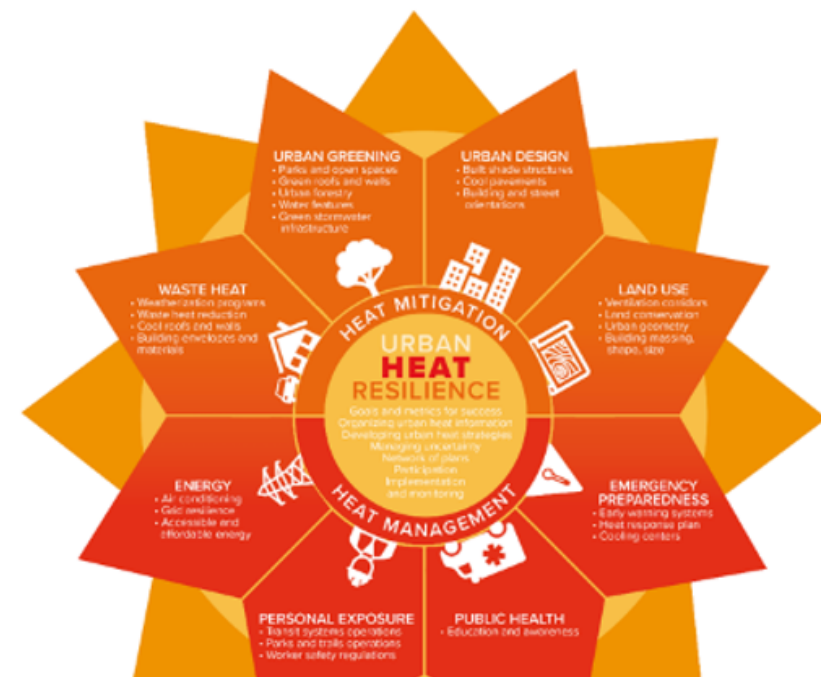
Plan Review

Plan Review

EXAMPLE

Plan Review - FCOG Extreme Heat Analysis					
Policy Text	Heat Planning Strategies	Policy Tool	Plan Origin	Jurisdiction	Notes
Pursue funding for the Green Street Tree Planting Program, including landscaping of median islands.	urban greening	funding and financing	General Plan	City of Fresno	grant applied to spring 2022
Encourage the use of energy conserving techniques in the siting and design of new housing.	energy	program	Housing Element	City of Fresno	
<p>1. Copy and paste (or type) the policy text from the plan into the "policy text" cell</p> <p>2. Select the most relevant category of strategy from the "heat planning strategies" menu (see figure for details)</p> <p>3. Select most relevant policy tool, leave blank if you don't know</p> <p>4. Type the name of the plan the strategy is from</p> <p>5. Type what jurisdiction/s the plan covers</p> <p>6. Staff notes, if relevant, on implementation or other details.</p>					
				Urban Heat Strategies Figure	

Plan review Schedule
Emailed: 5/15/2025
Please Return to Rose: 6/6/25



Vulnerability Indicators

Vulnerability Indicators

CATEGORY	INDICATOR
Exposure	Urban Heat Island Severity Impervious Surfaces Frequency of Extreme Heat Days
Sensitivity	Population aged 65+ Children Under 5 Disability status Asthma Coronary heart disease Low Birth Weight Obesity Low Income Outdoor Workers Renters Language
Adaptive Capacity	Tree Canopy Cover Access to Cooling Resources Green Space Access Transportation Access Income Levels Education

Local Needs

Local Needs

- Common challenges to shade and vegetation implementation?
- Types of corridors you would like to see represented (ROW, land uses, users, amenities?)

Thank you!