

# Needs Assessment Development


## Alan Thompson SCAG Active Transportation Coordinator

Fresno Council of Governments  
Peer Exchange Workshop

August 20, 2014



SOUTHERN CALIFORNIA  
ASSOCIATION of GOVERNMENTS



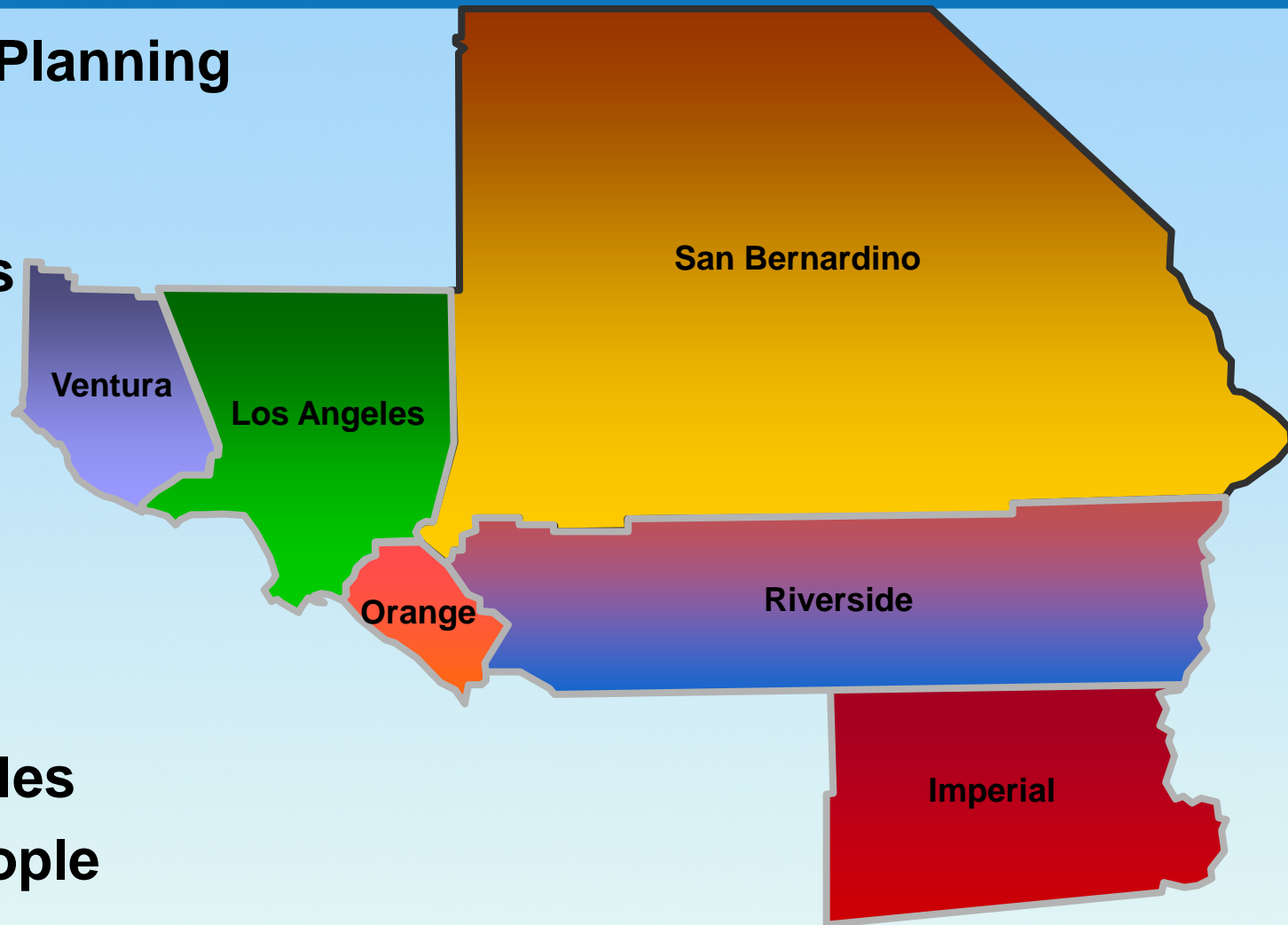
# Southern California Association of Governments

**Metropolitan Planning  
Organization**

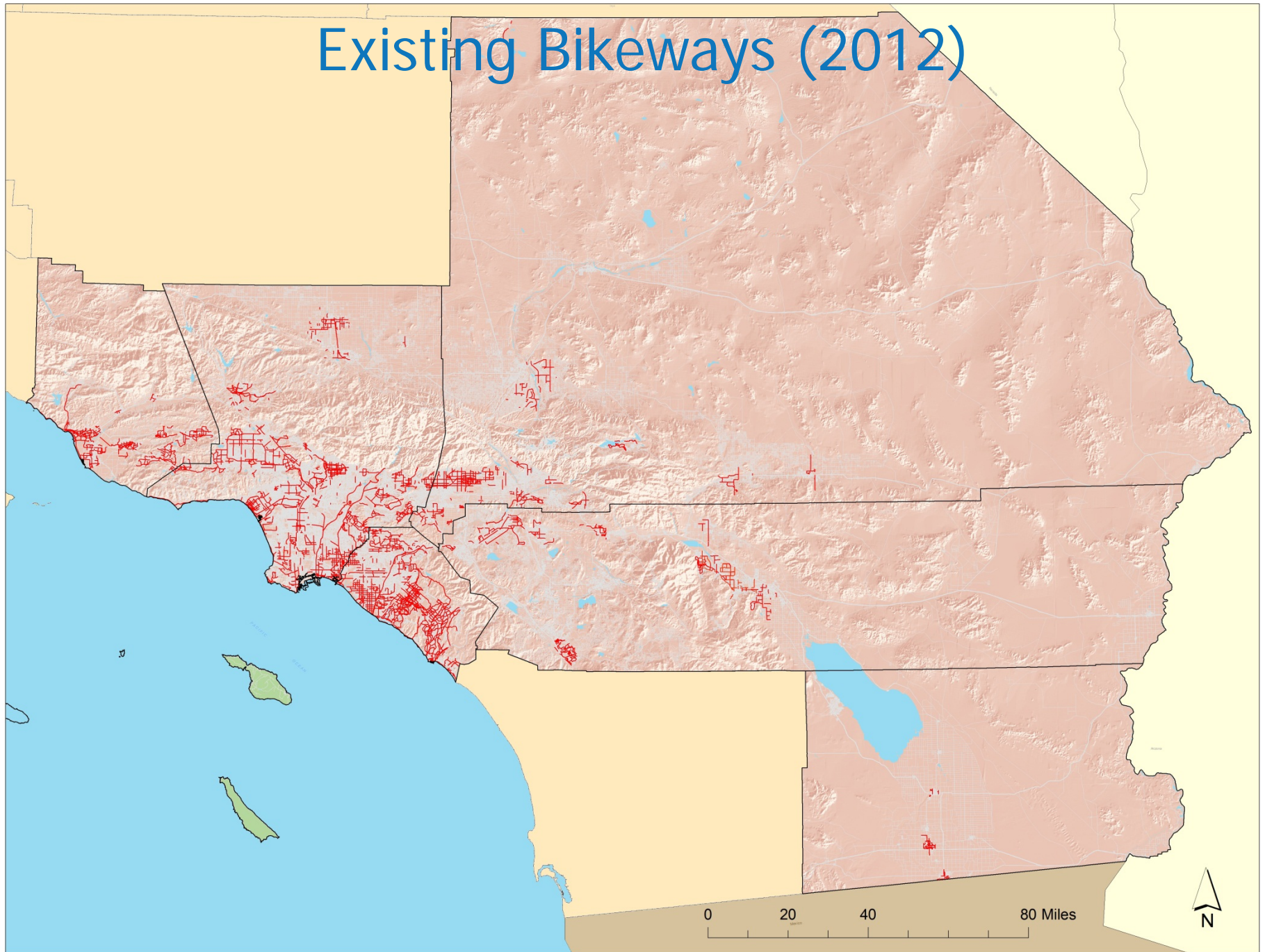
**6 Counties**

**191 Cities**

**38,000 Sq. Miles  
18 Million People**

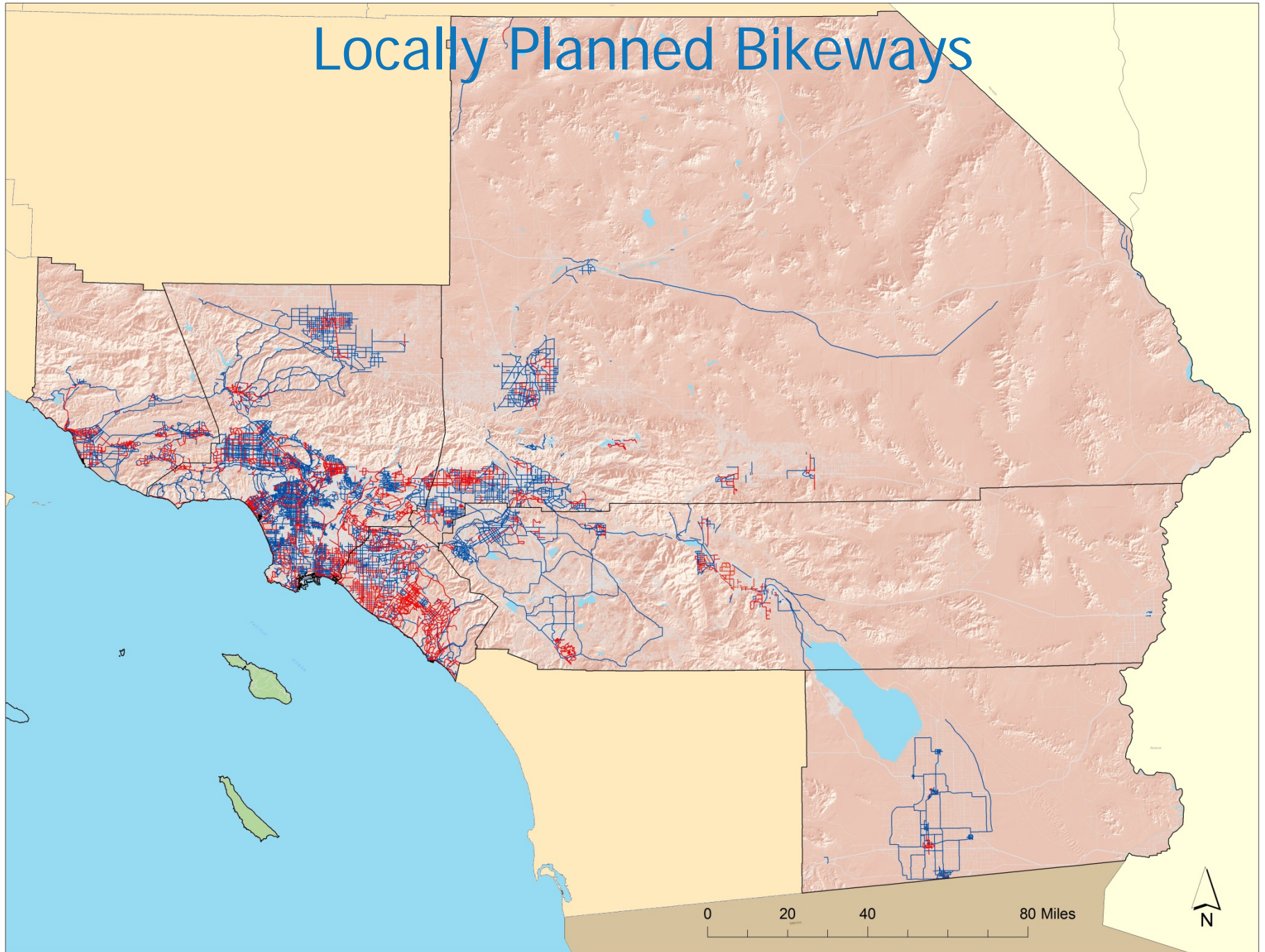


# Existing Bikeways (2012)

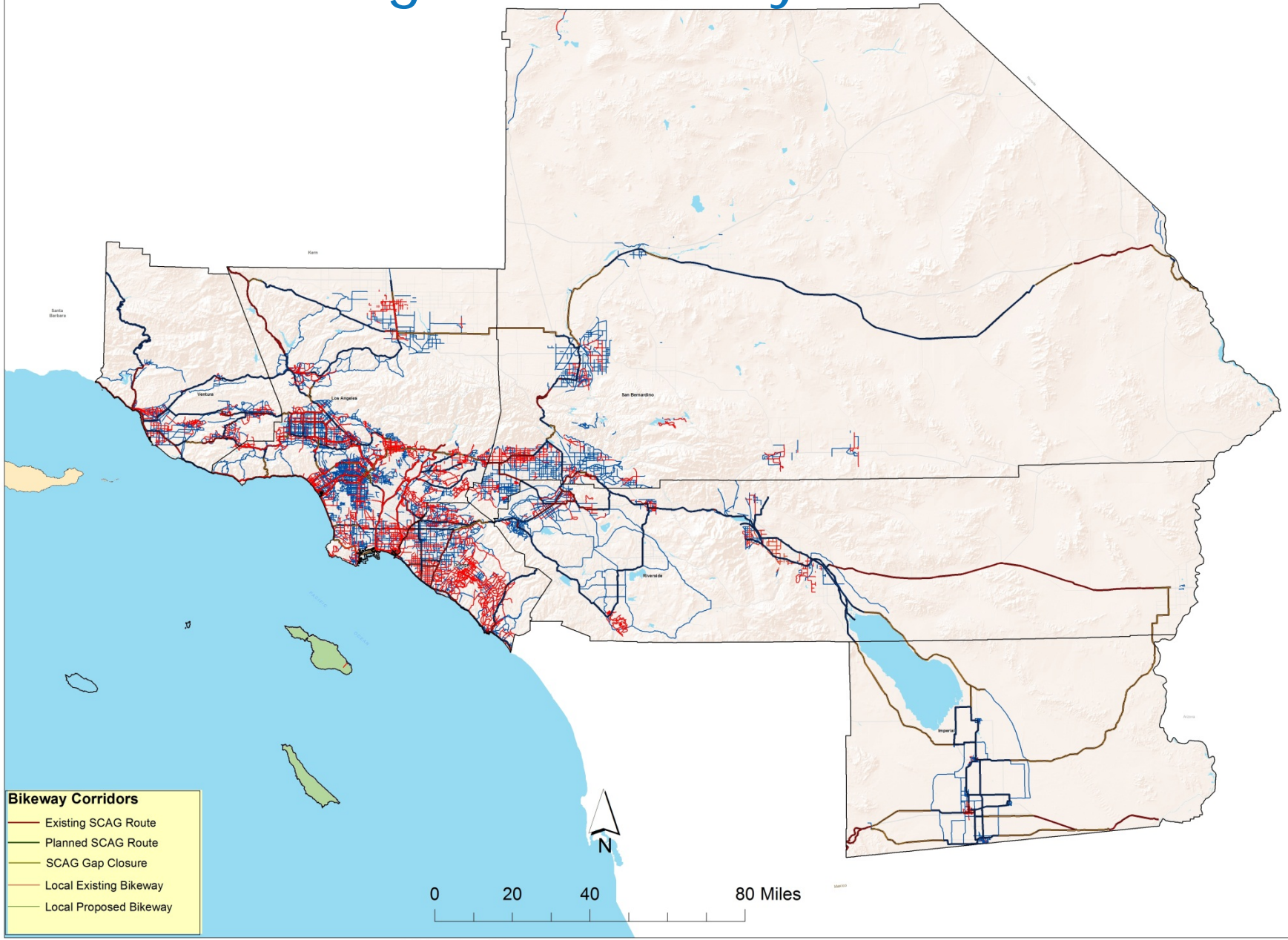




# Locally Planned Bikeways

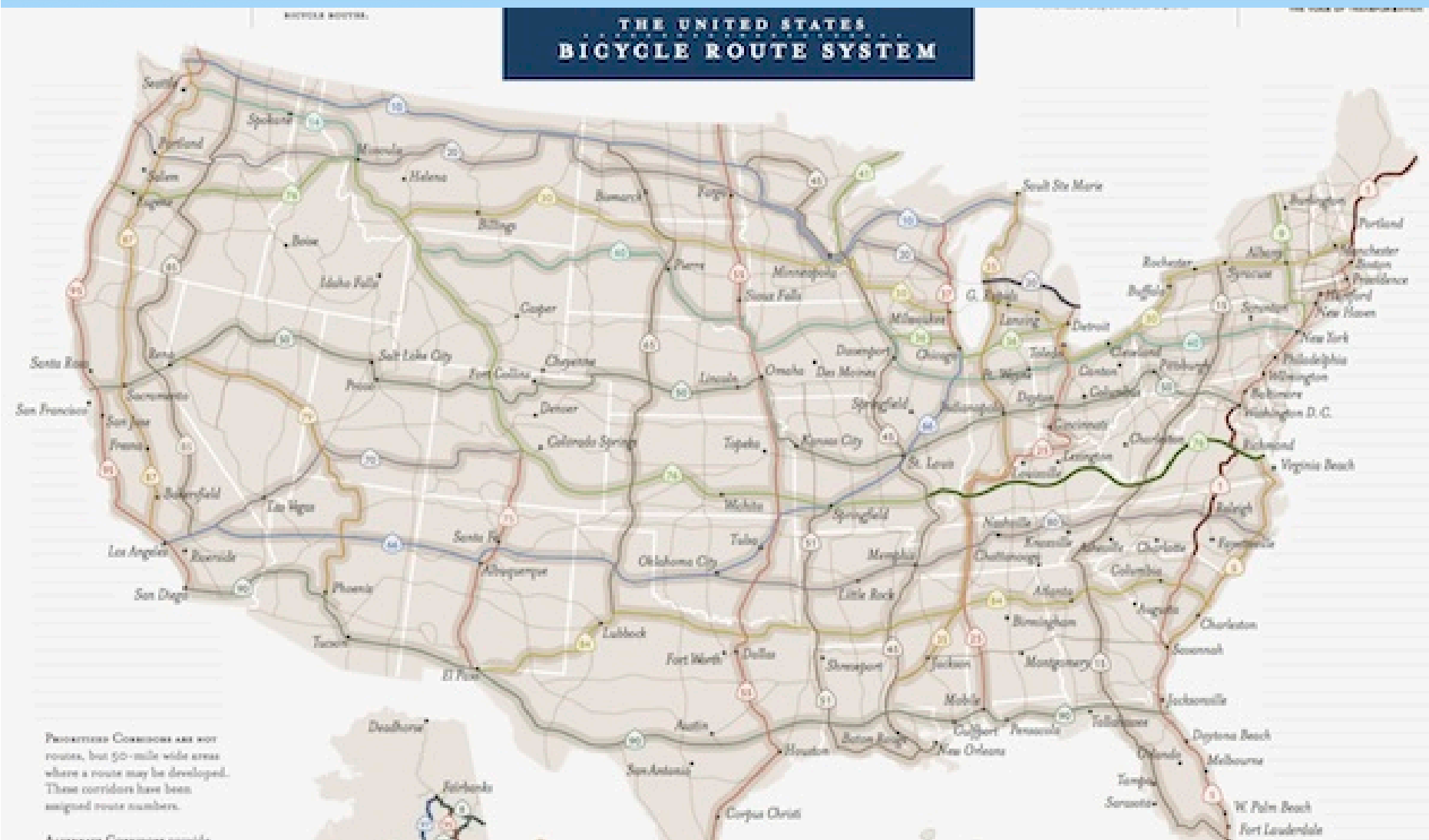


# Regional Bikeway Network





# National, State and Regional Bikeway Planning



# 2012 RTP/SCS

## Active Transportation Appendix Adopted

- Regional Council directed staff to focus on implementation going forward
  - Develop Active Transportation Strategic Funding Plan
  - Develop Regional Complete Streets Plan
  - Develop Regional Safe Routes to School Plan
  - Develop Health and Equity Performance Measures
  - Incorporate enhanced tracking of chronic Disease Outcomes

## Convened Several Limited Term Subcommittees (6 meetings)

- Active Transportation Subcommittee
- Sustainability Subcommittee
- Public Health Subcommittee
- Goods Movement Subcommittee
- Transportation Subcommittee
- Transportation Finance Subcommittee

Comprised of Elected Officials, with advocates and technocrats as ex-officio members.



# Actions coming out of Subcommittee

- Develop an inventory of existing and proposed/needed bicycle and pedestrian infrastructure.
- Develop funding estimates for infrastructure investments needed to complete the construction of active transportation networks in the SCAG region for the 2016 RTP/SCS.
- Perform an analysis to determine how investments in complete streets and first mile/last mile strategies can improve conditions for underserved, low-income communities.

# Actions coming out of Subcommittee

- Determine data collection needs and opportunities to inform SCAG's modeling efforts and investment decisions.
- Develop best practices and performance modeling tools that demonstrate the health benefits associated with Active Transportation.
- Determine a strategy to incorporate health and equity measures into project selection criteria.

# Actions coming out of Subcommittee

- Survey local governments to determine needs for planning grants and policy change. This would determine which cities have existing bicycle and pedestrian plans, Safe Routes to School Plans, Complete Streets policies, Health Elements, etc.



# Actions coming out of Subcommittee

- Determine the transportation needs for schools and non-drivers.
- Assess technical assistance needs for jurisdictions with a focus on low-income jurisdictions. Become a resource for them.

# Needs Assessment

## Core Deliverables

- Policy analysis
  - Federal/State/Local (from survey)
- Safety Analysis (SWITRS Data)
- Regional Bikeway Network (from CTCs)
- Regional sidewalk Network (lacking)
- Data Collection and Modeling (lacking)
- Performance Measures (how to measure with lack of data)
- Funding gaps

# Overriding Consideration

*The Transportation Infrastructure should be made to favor all users.*

*An automobile should be a choice, not a requirement, particularly for short distances.*



Alan Thompson  
Active Transportation Coordinator  
Southern California Assn. of Governments  
[thompson@scag.ca.gov](mailto:thompson@scag.ca.gov)  
213.236.1940



SOUTHERN CALIFORNIA  
ASSOCIATION of GOVERNMENTS