



Fresno Council of Governments

Sustainable Communities Strategy Scenarios

3 SCS Scenarios:

Scenario A

```
graph TD; A[Scenario A] --- B[Based on the input collected at the community workshop in November 2012]; A --- C[Metro vs. non-metro growth ratio controlled]; A --- D[More growth allocated to some small rural communities than historical trend];
```

**Based on the
input collected at
the community
workshop in
November 2012**

**Metro vs. non-
metro growth
ratio controlled**

**More growth
allocated to some
small rural
communities than
historical trend**

3 SCS Scenarios:

Scenario B

Based on the existing general plans, general plan updates, proposed land uses, and latest planning assumptions

Growth allocation among cities takes into account historical trend

Include development in Millerton New Town, Friant Ranch, and the proposed pharmacy school

3 SCS Scenarios:

Scenario C

**Additional 4%
of growth
(*compared to
scenario B*)
allocated to City
of Fresno along
corridors and
activity centers**

**Growth for rural
county areas
allocated to 10
unincorporated
communities:
Biola, Caruthers, Del
Rey, Easton, Friant,
Lanare, Laton,
Riverdale, Shaver Lake,
and Tranquility**

**Not included:
Millerton New
Town, Friant
Ranch and the
proposed
pharmacy school**

3 SCS Scenarios:

Scenario D

```
graph TD; A[Scenario D] --> B[Developed by a Coalition of community organizations]; A --> C[Growth reduced from the foothill communities and the City of Clovis and reallocated to existing cities and communities]; A --> D[Not included: Millerton New Town, Friant Ranch and the proposed pharmacy school];
```

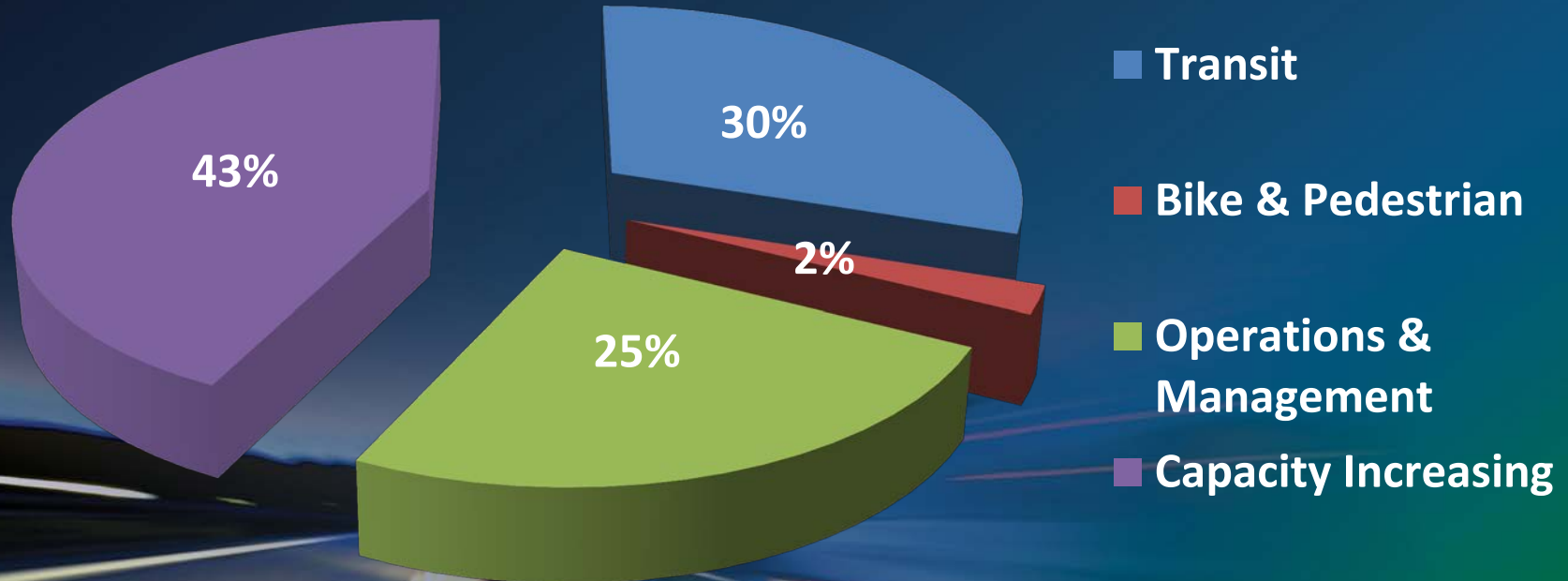
**Developed by a
Coalition of
community
organizations**

**Growth reduced
from the foothill
communities and
the City of Clovis
and reallocated to
existing cities and
communities**

**Not included:
Millerton New
Town, Friant
Ranch and the
proposed
pharmacy school**

SCS Scenarios-Transportation Projects

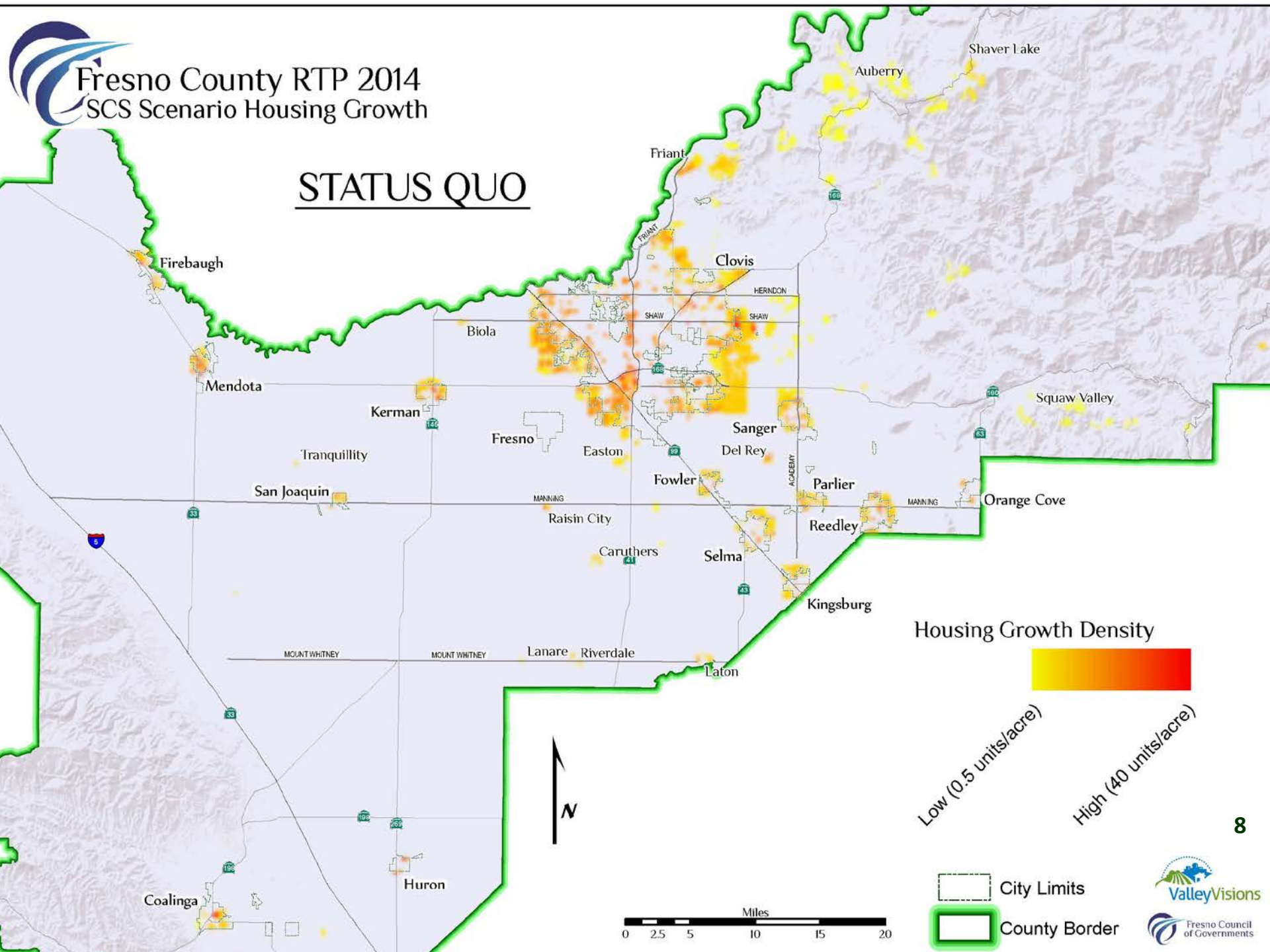
Project Funding by Mode



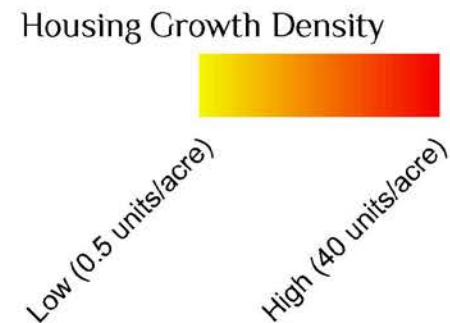
Growth Projection (From 2008 through 2035)

Population growth:
378,140 more people

Employment growth:
81,912 more jobs

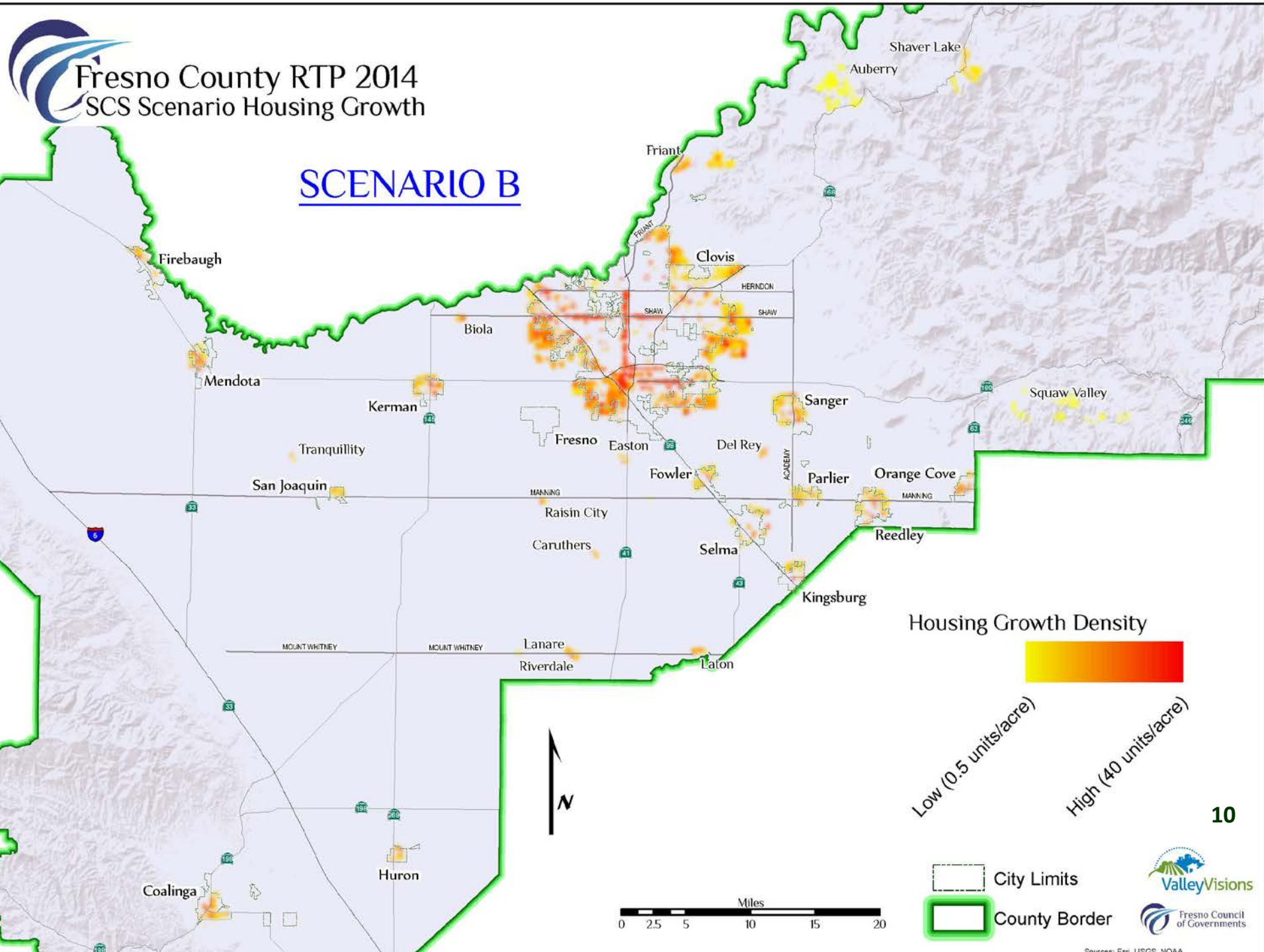


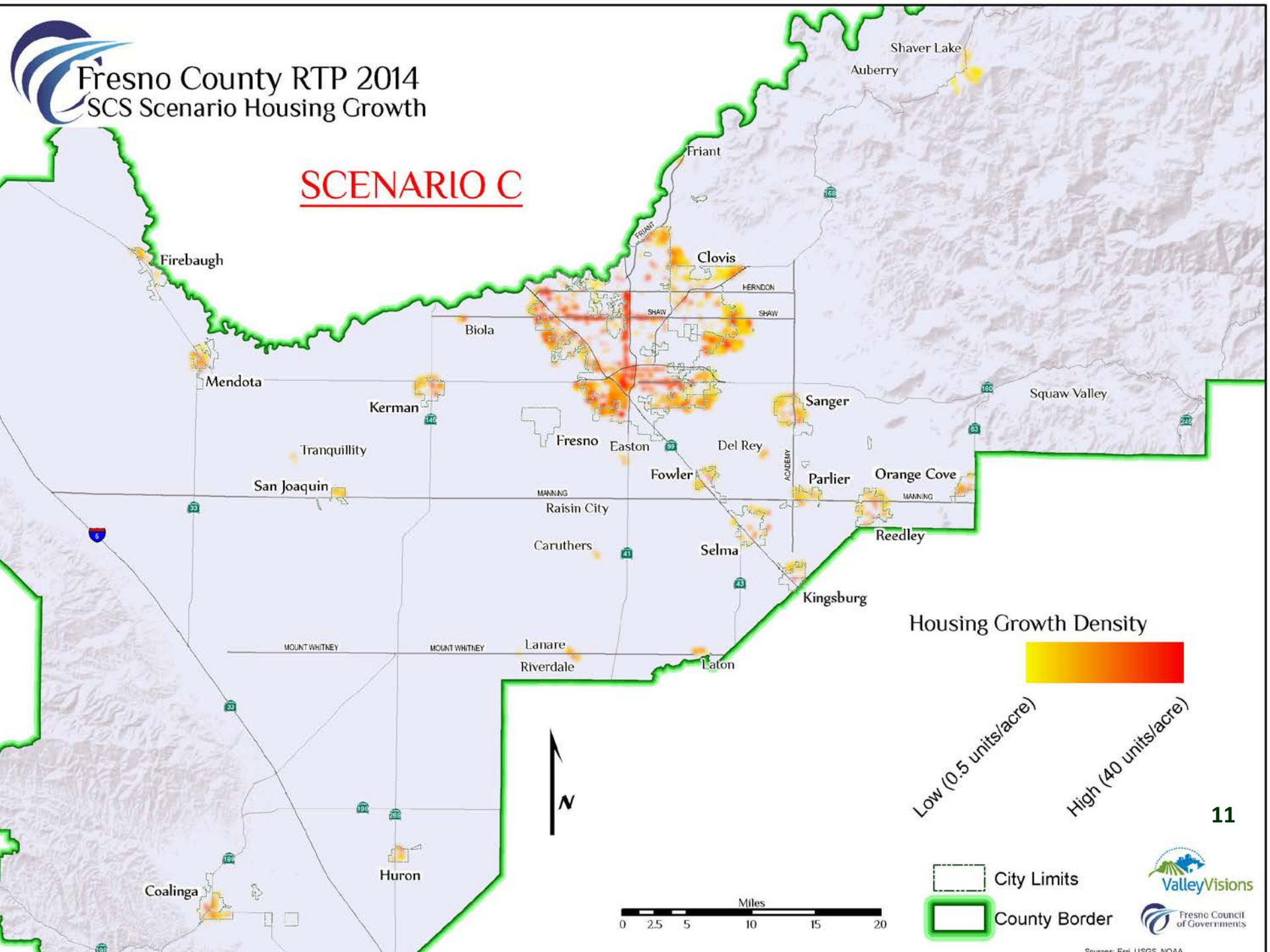
SCENARIO A



9

SCENARIO B



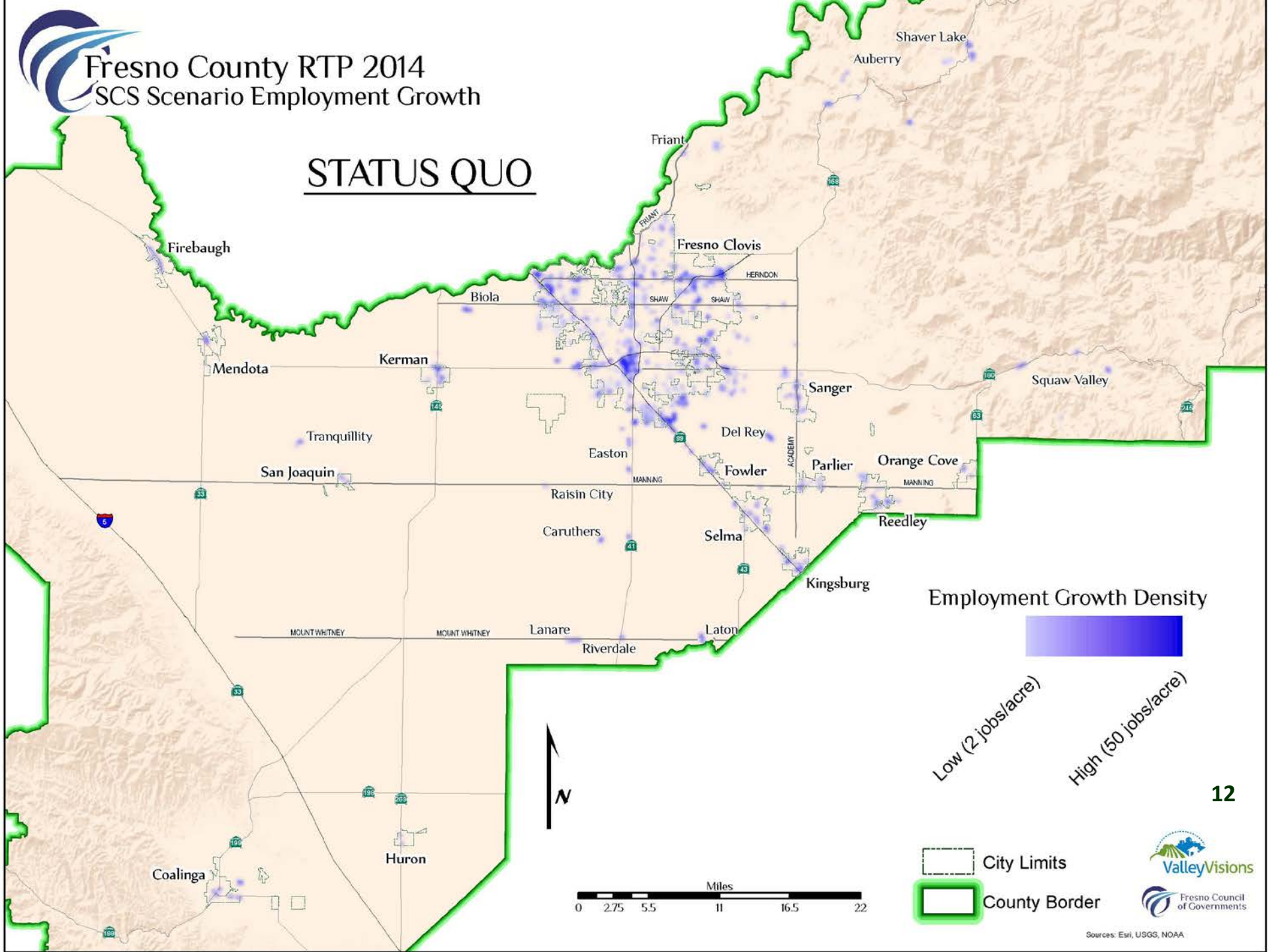




Fresno County RTP 2014

SCS Scenario Employment Growth

STATUS QUO



Employment Growth Density



Low (2 jobs/acre)

High (50 jobs/acre)

City Limits

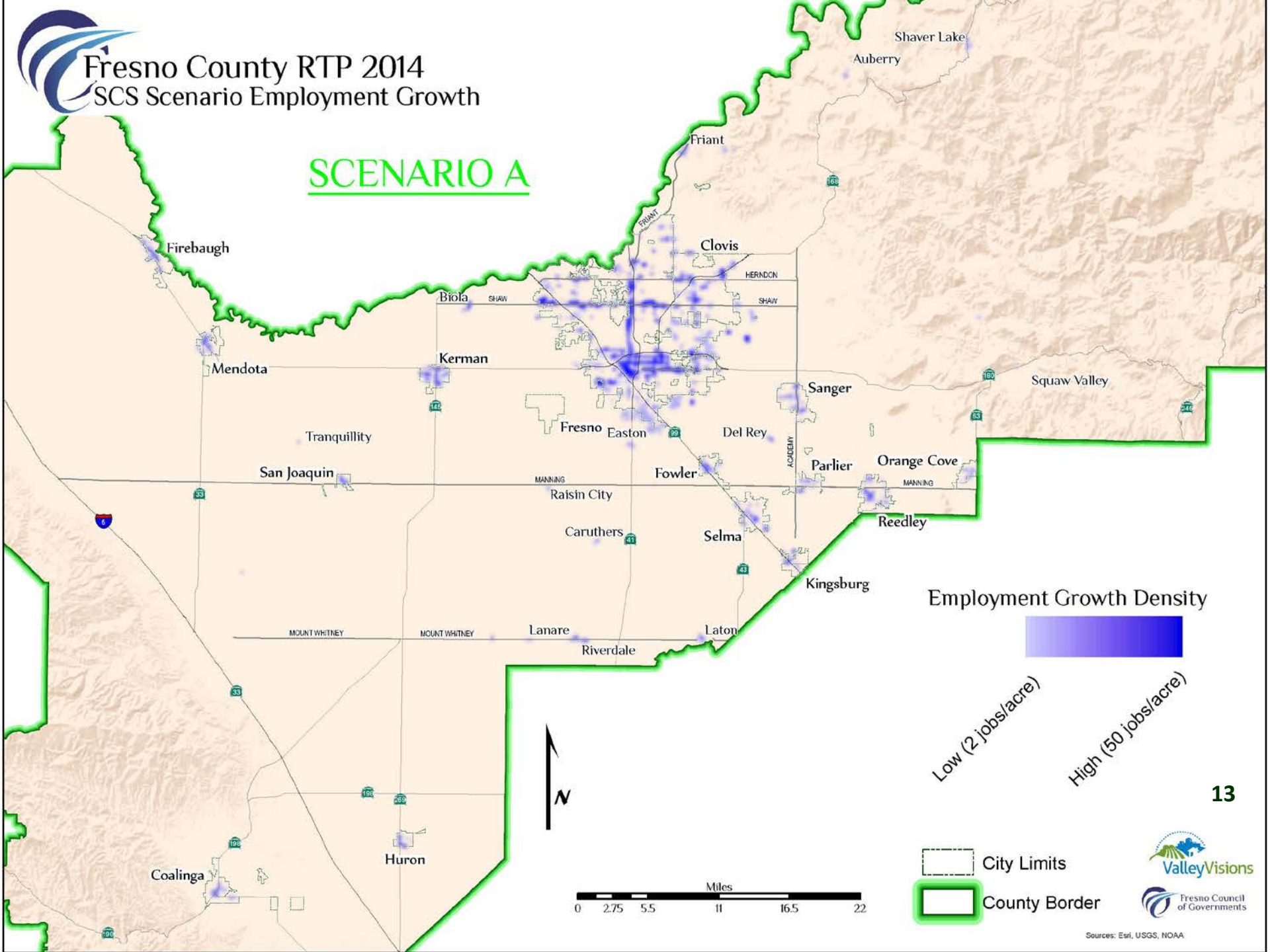
County Border



Fresno County RTP 2014

SCS Scenario Employment Growth

SCENARIO A

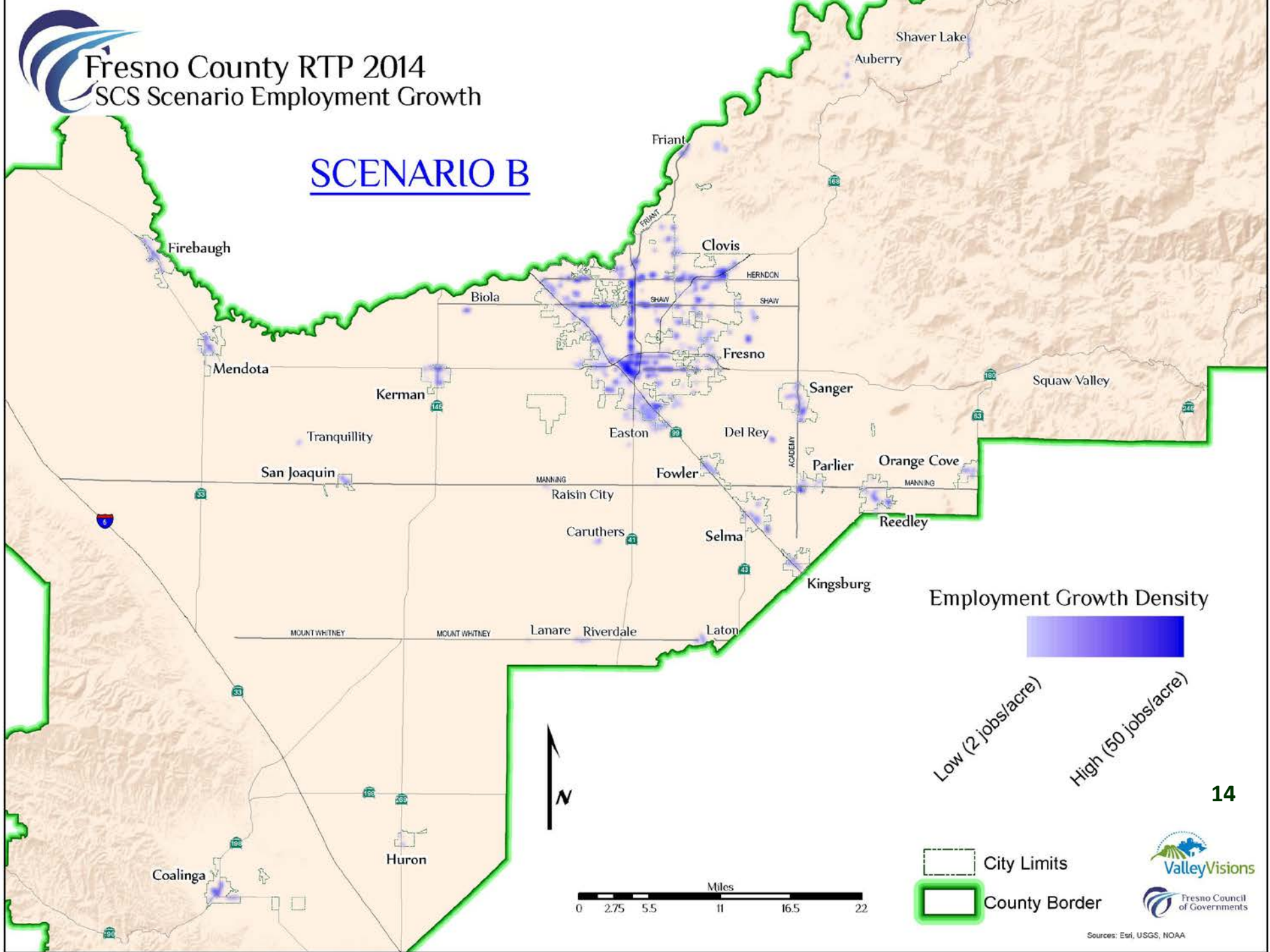




Fresno County RTP 2014

SCS Scenario Employment Growth

SCENARIO B



Employment Growth Density



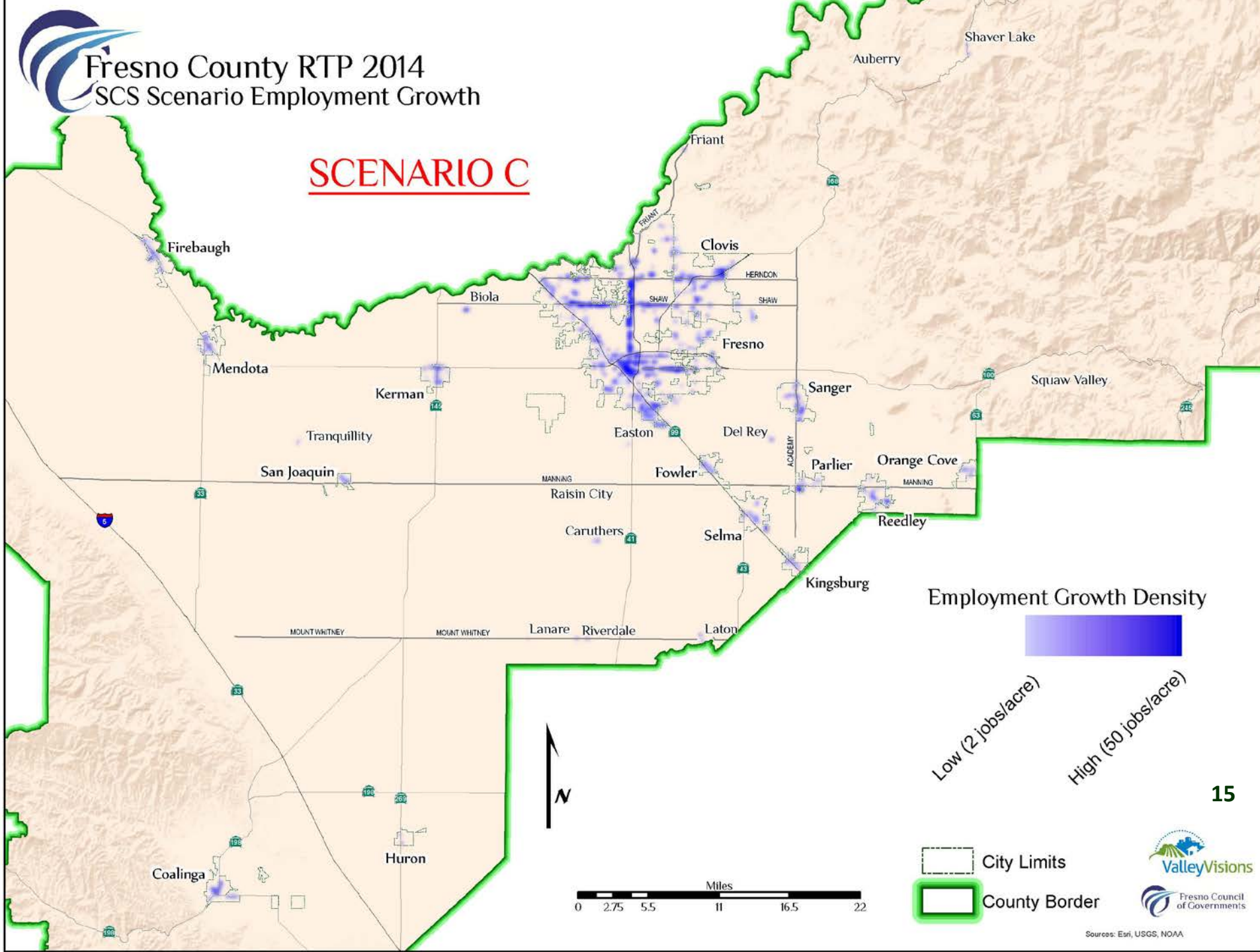
Low (2 jobs/acre)

High (50 jobs/acre)

City Limits

County Border

SCENARIO C

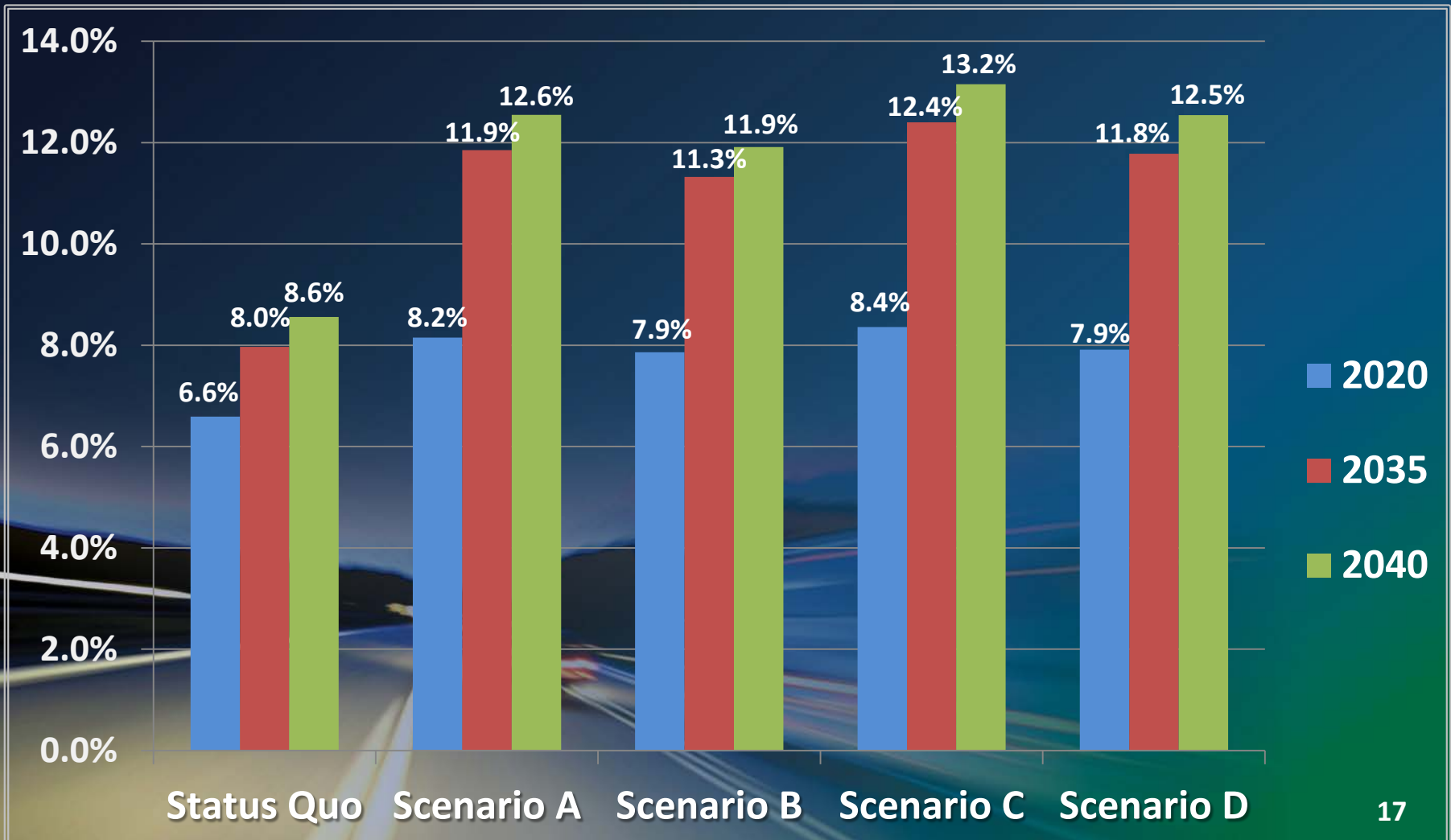


What is a Performance Indicator?

- Performance indicators provide quantified evidence of the consequences of a decision or action
- In the SCS process, performance indicators are used to measure the impacts of different planning scenarios

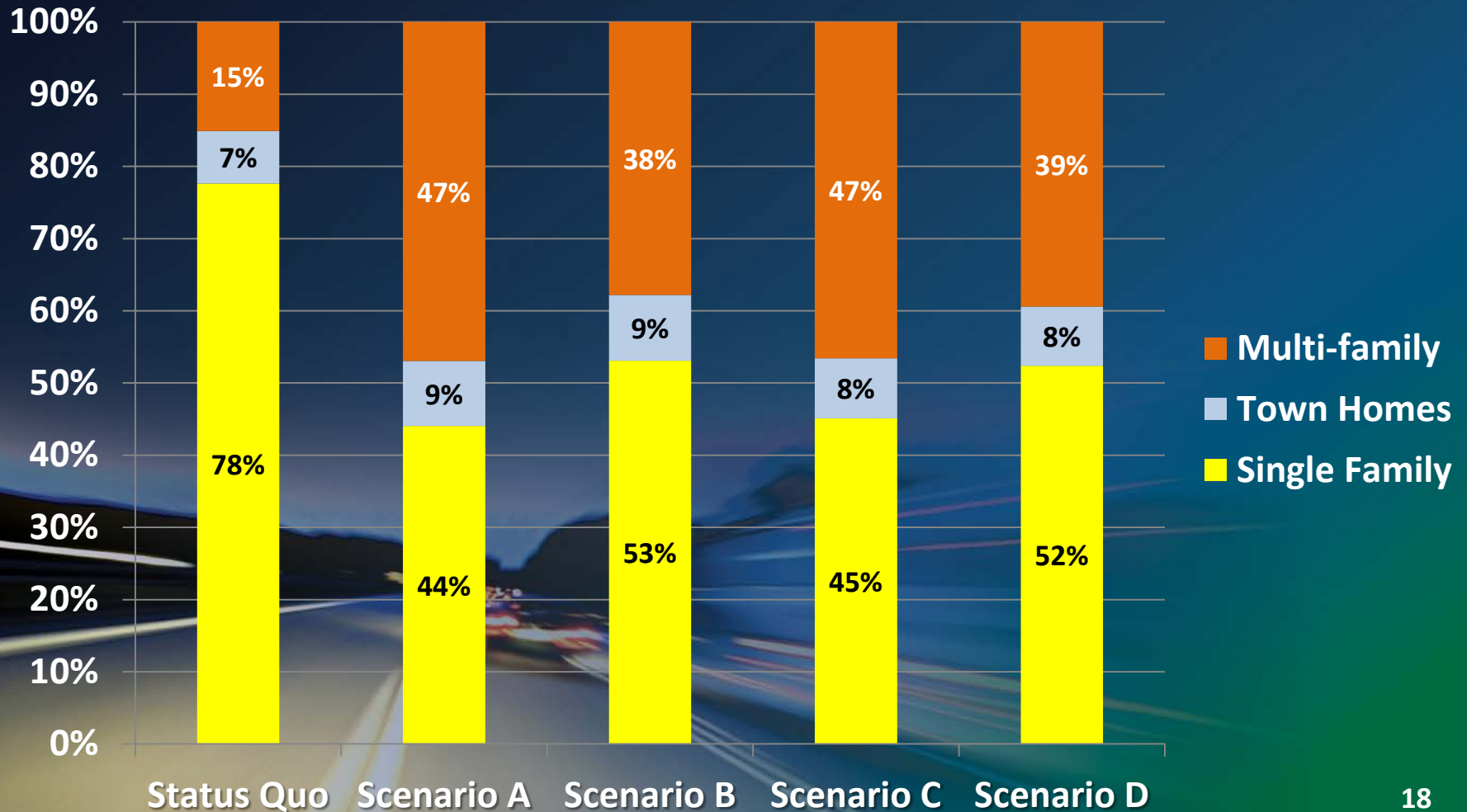
Greenhouse Gas Emission Reduction

(Per capita percent reduction against 2005)



Housing

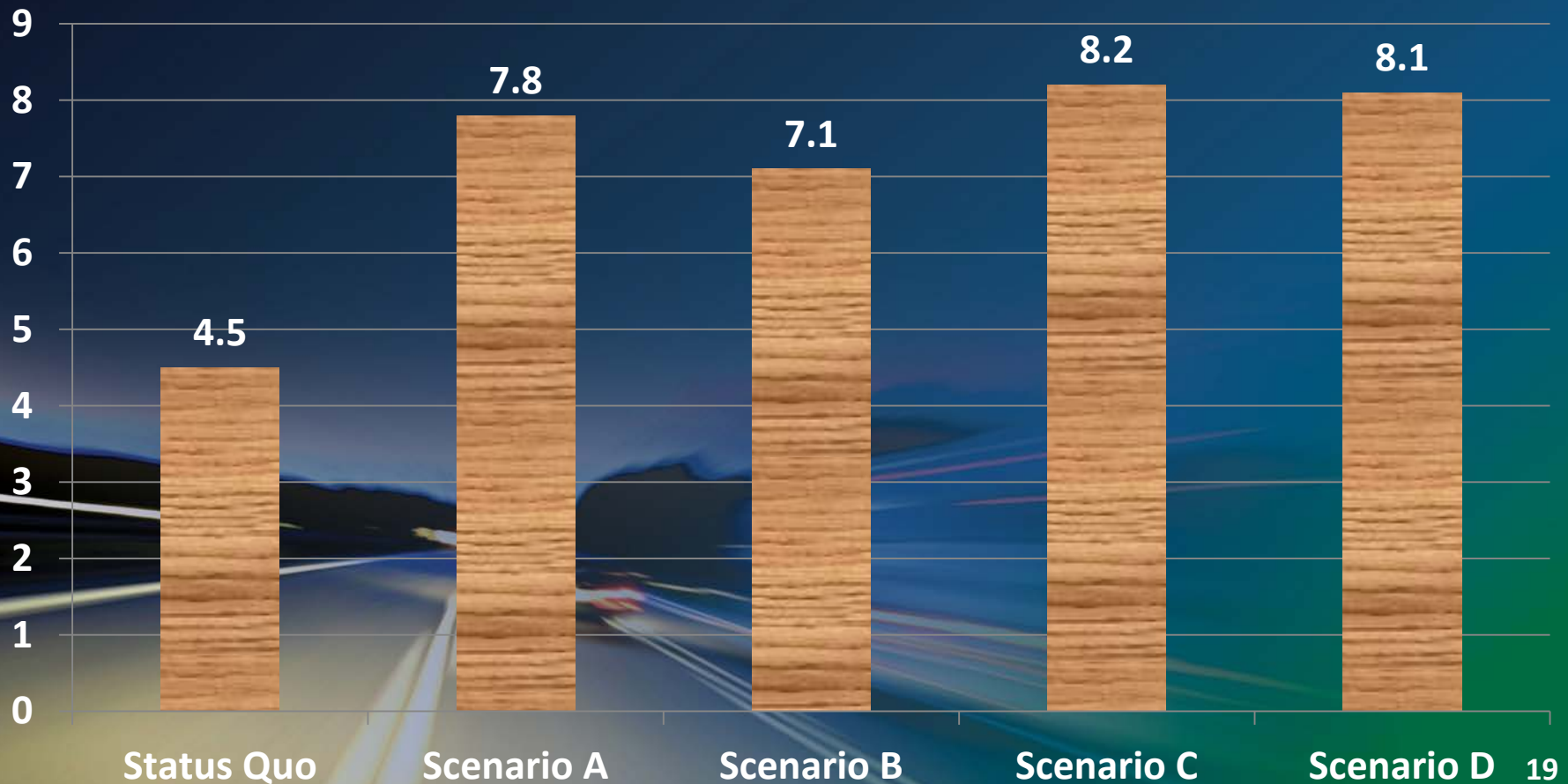
(New Housing Growth from 2008 - 2035)



Residential Density

(new growth from 2008 - 2035)

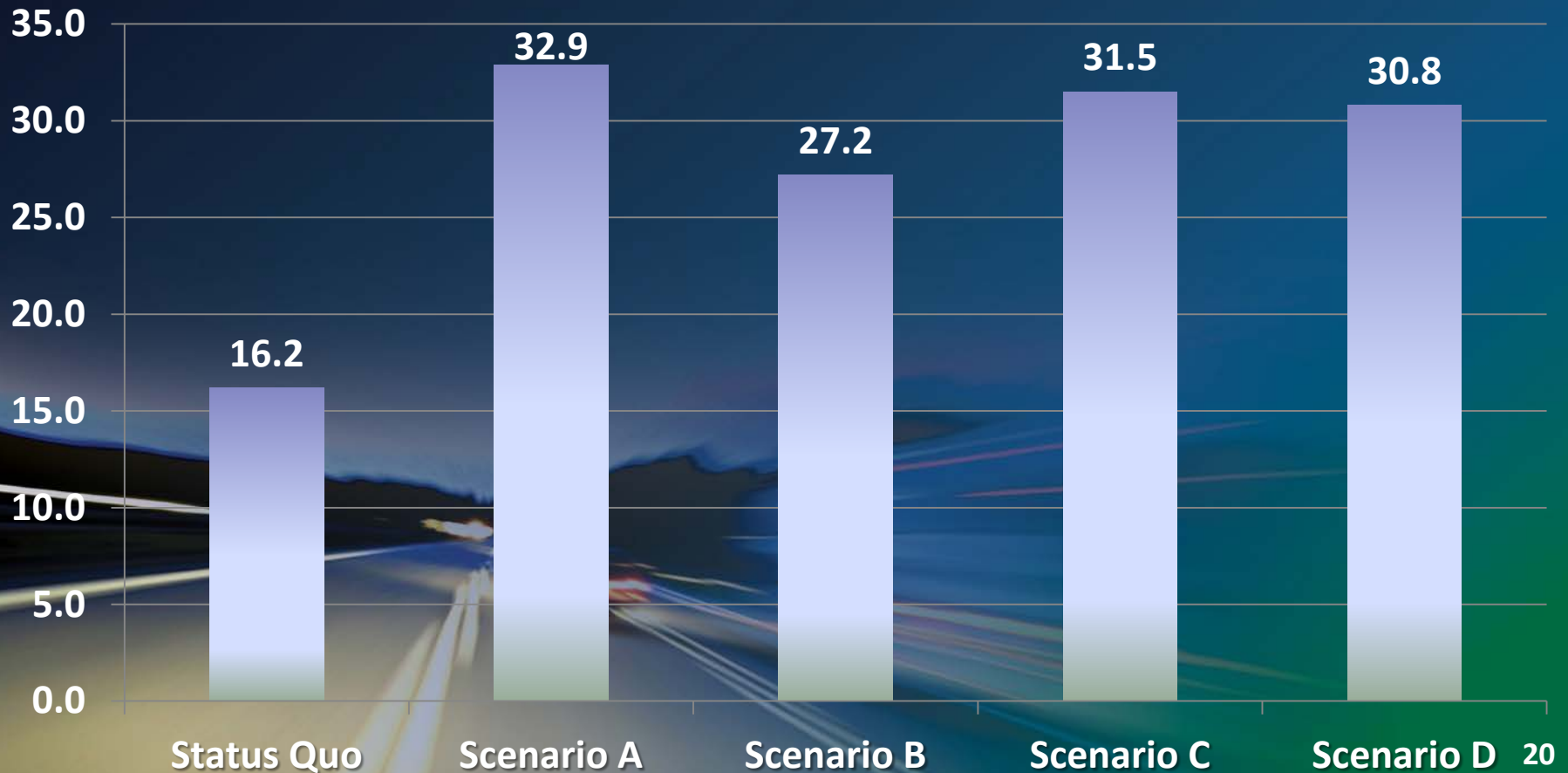
(housing units per acre of land)



Compact Development

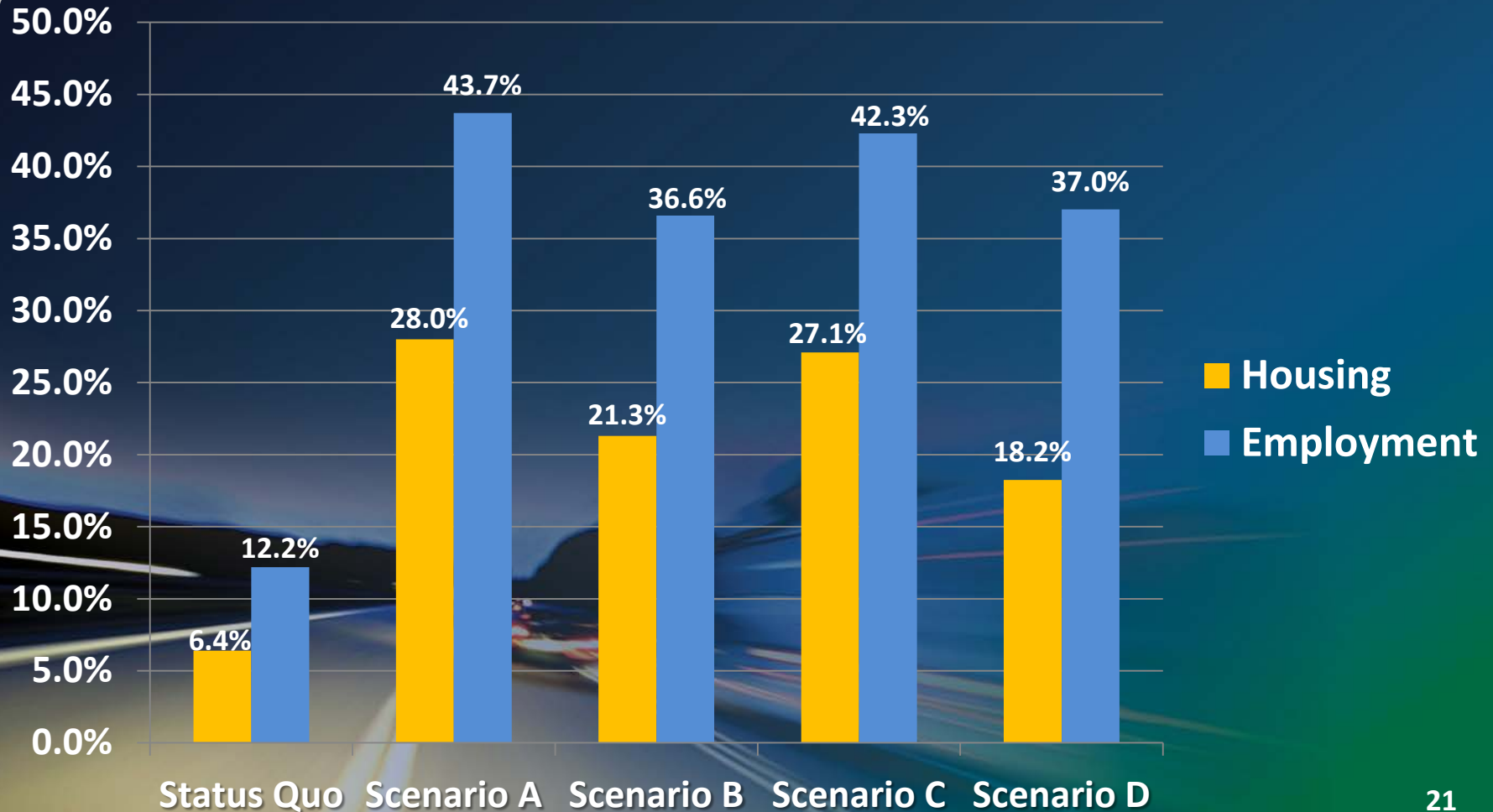
(new growth from 2008 - 2035)

(Average number of people per acre of land)



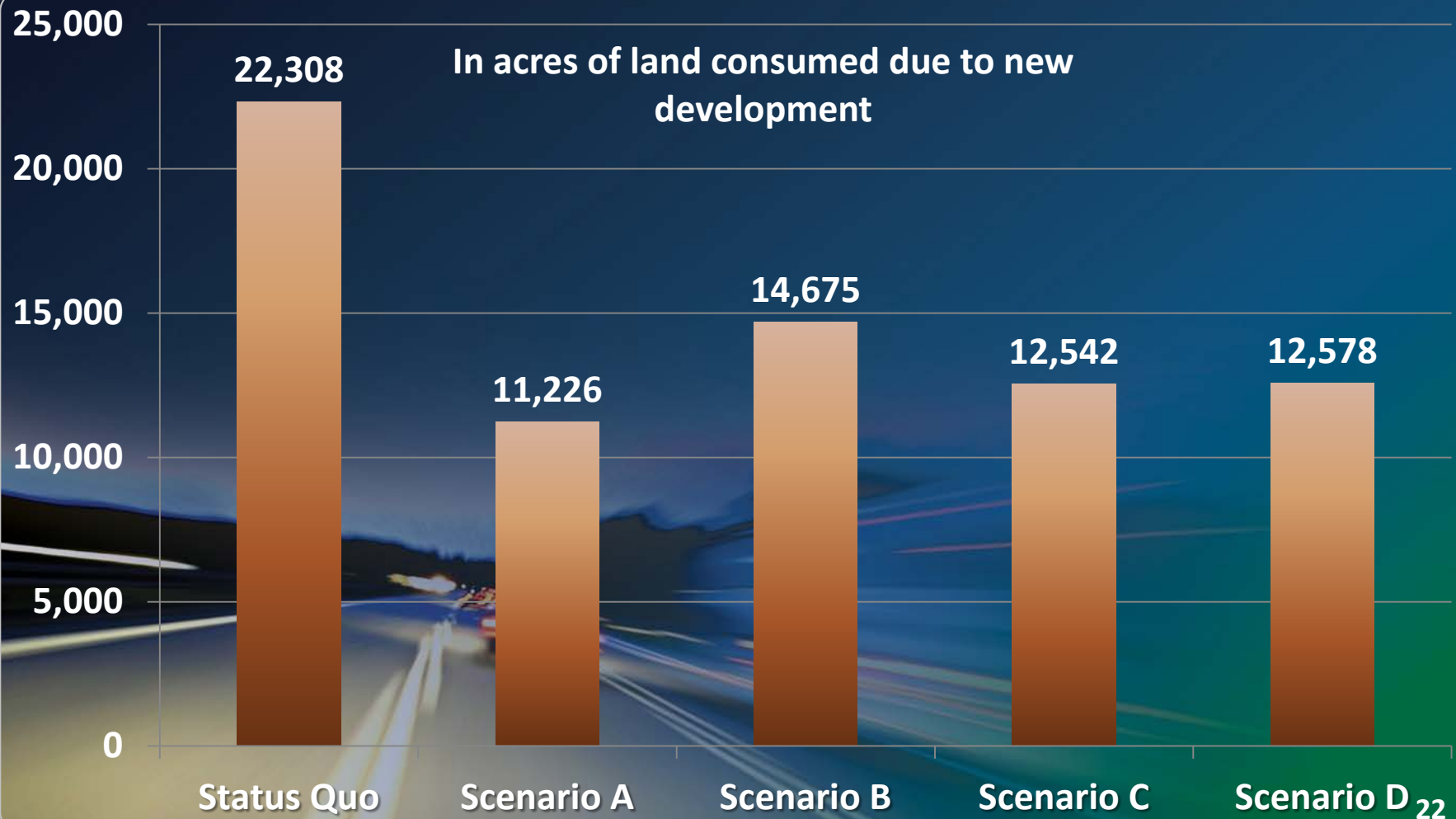
Transit Oriented Development

(Percent Growth within ½ mile of Bus Rapid Transit
for the growth from 2008 - 2035)



Land Consumption

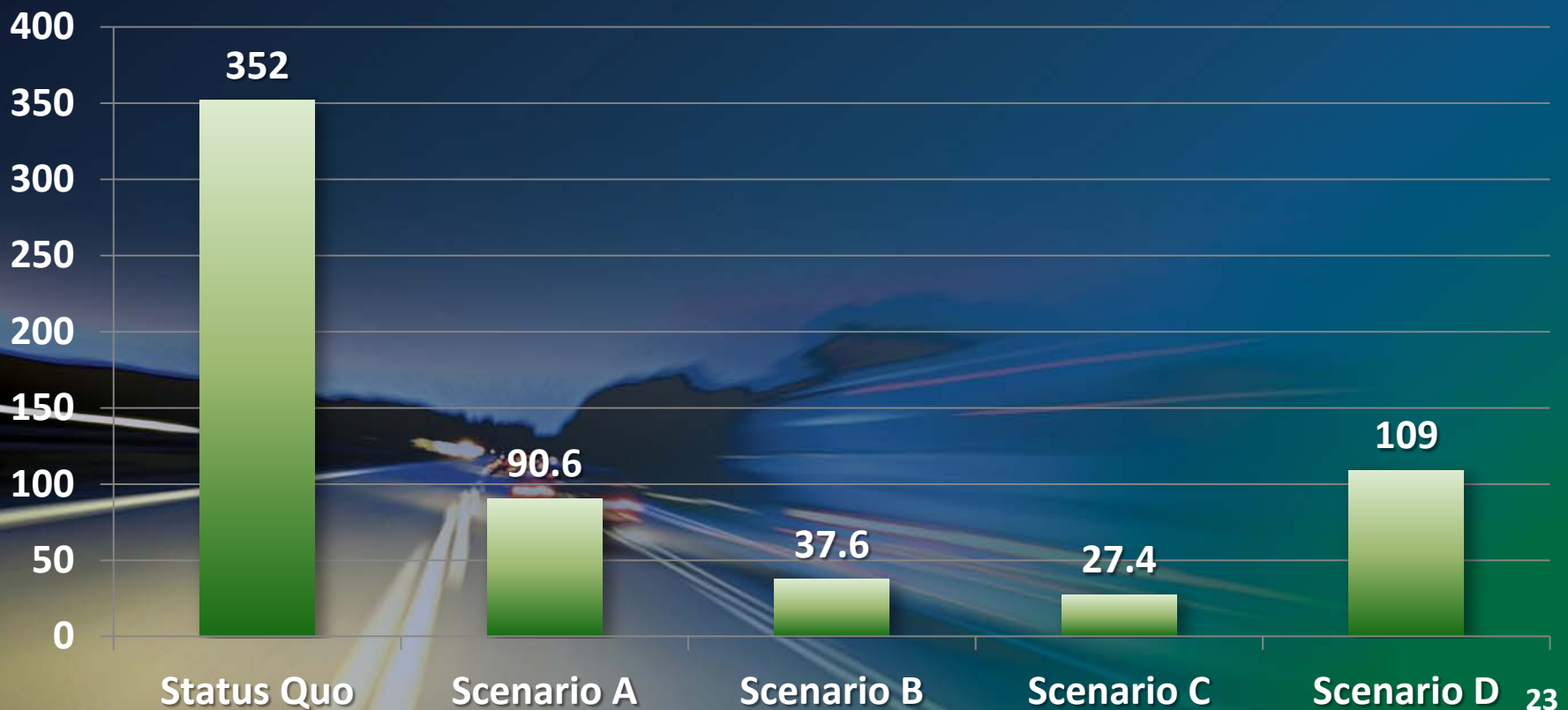
(new growth from 2008 - 2035)



Important Farmland Consumed

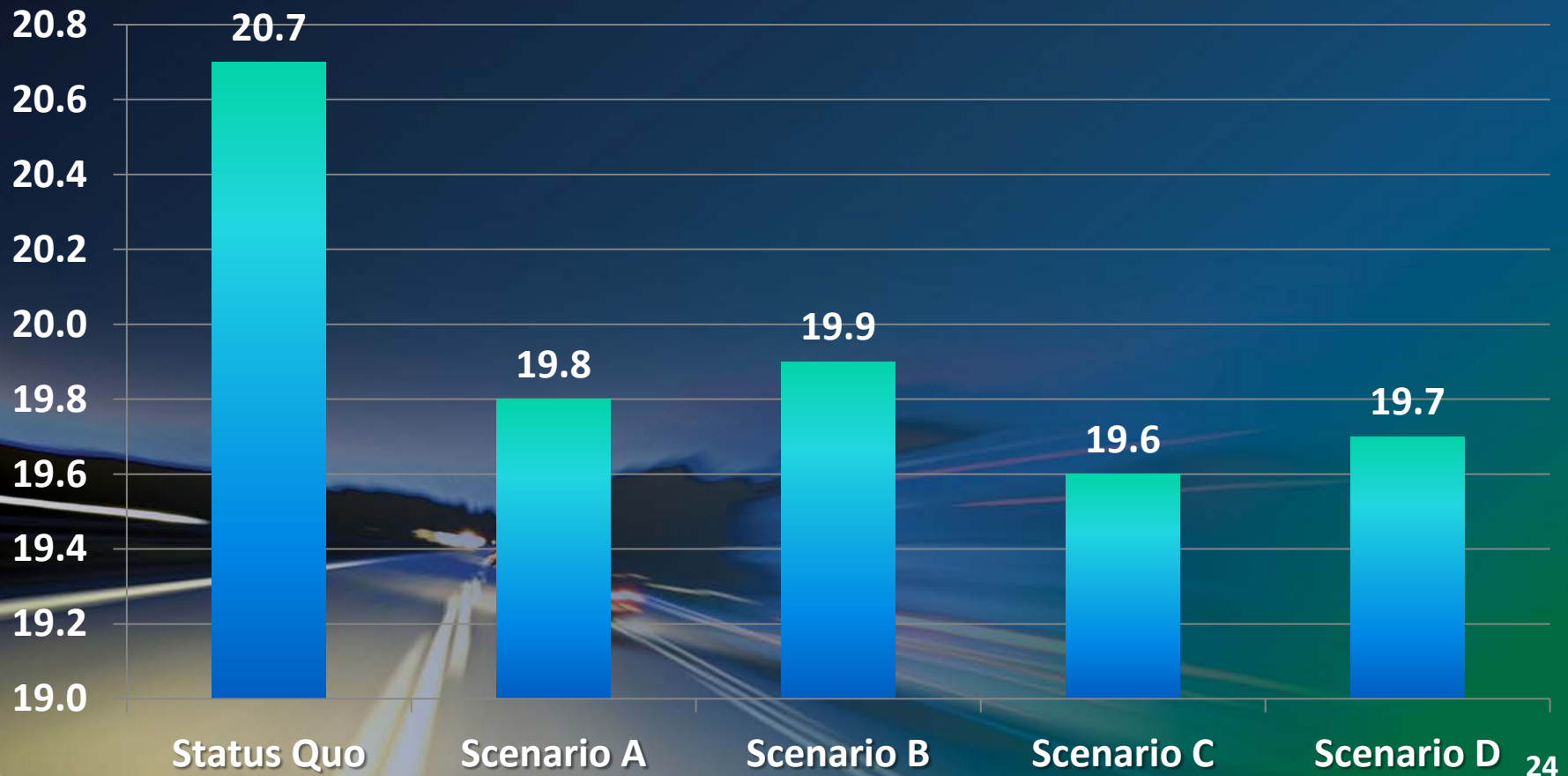
(by new growth from 2008 - 2035)

Acres of important farmland
(Unique, Prime and State-wide importance) consumed
due to new growth



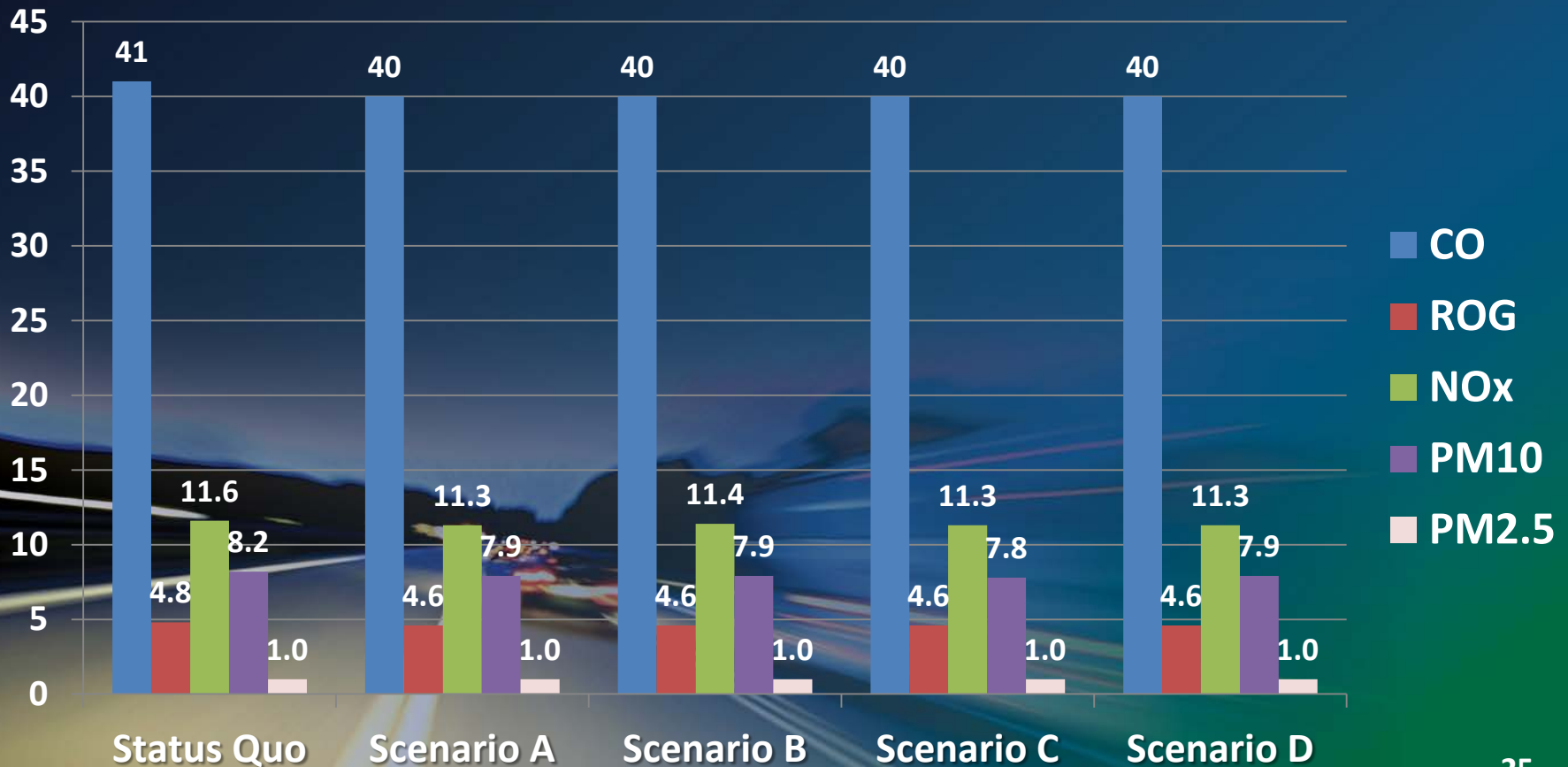
Vehicle Miles Traveled (VMT)

(in millions of miles per day in 2035)



Criteria Pollutants Emissions (CO, ROG, NOX, PM2.5, & PM10)

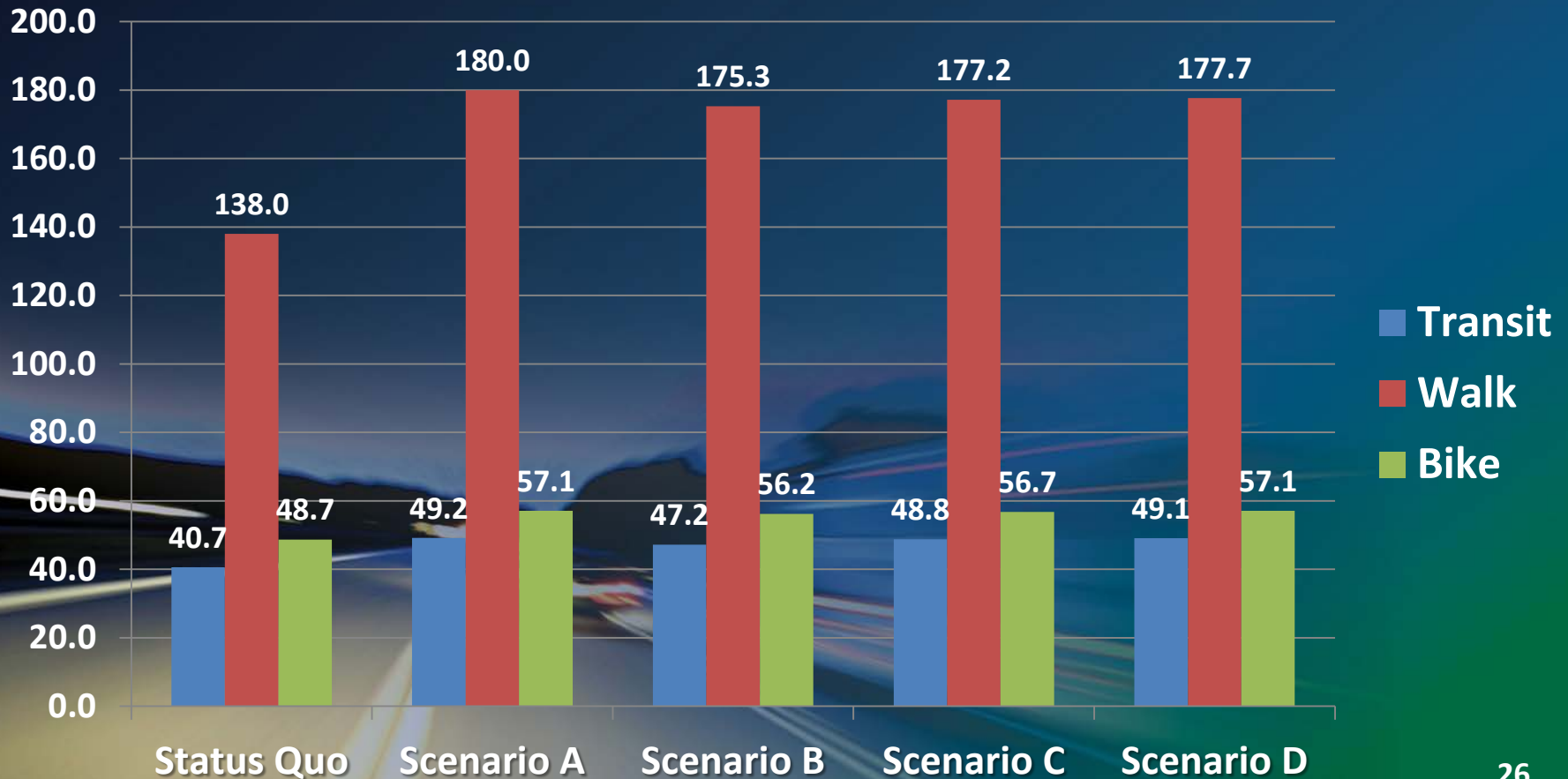
(tons per day in 2035)



Active Transportation & Transit Travel

(non-private auto trips per day in 2035)

(in thousand person trips)



Scenario Indicators/Performance Measures

Why are these important to me?

<i>If any of these issues are important to you, you should consider the indicators to the right...</i>	Criteria Pollutants Emissions	Transit Oriented Development	Vehicle Miles Traveled	Greenhouse Gases	Land Consumption	Compact Development	Residential Density	Important Farmland Consumed	Housing types	Active Transportation & Transit Travel
Air quality & health	✓	✓	✓	✓		✓	✓		✓	✓
Transportation choices		✓				✓	✓		✓	✓
Housing type options		✓				✓	✓		✓	
Farmland & resource conservation		✓			✓	✓	✓	✓	✓	



Fresno Council of Governments

www.fresnocog.org

559-233-4148